

BALDOR® • RELIANCE 

Product Information Packet

EJMM3314T

15HP,3485RPM,3PH,60HZ,215JM,3734M,OPSB,F

Part Detail							
Revision:	B	Status:	PRD/A	Change #:		Proprietary:	No
Type:	AC	Elec. Spec:	37WGL867	CD Diagram:	CD0005	Mfg Plant:	
Mech. Spec:	37F784	Layout:	37LYF784	Poles:	02	Created Date:	11-11-2020
Base:	RG	Eff. Date:	12-14-2021	Leads:	9#12		

Specs			
Catalog Number:	EJMM3314T	Insulation Class:	F
Enclosure:	OPSB	Inverter Code:	Inverter Ready
Frame:	215JM	KVA Code:	G
Frame Material:	Steel	Lifting Lugs:	Standard Lifting Lugs
Output @ Frequency:	15.000 HP @ 60 HZ	Locked Bearing Indicator:	Locked Bearing
Synchronous Speed @ Frequency:	3600 RPM @ 60 HZ	Motor Lead Quantity/Wire Size:	9 @ 12 AWG
Voltage @ Frequency:	460.0 V @ 60 HZ	Motor Lead Exit:	Ko Box
	230.0 V @ 60 HZ	Motor Lead Termination:	Flying Leads
XP Class and Group:	None	Motor Type:	3734M
XP Division:	Not Applicable	Mounting Arrangement:	F1
Agency Approvals:	UR	Power Factor:	88
	CSA EEV	Product Family:	General Purpose
	CSA	Pulley End Bearing Type:	Ball
Auxillary Box:	No Auxillary Box	Pulley Face Code:	C-Face
Auxillary Box Lead Termination:	None	Pulley Shaft Indicator:	Tapped & Key
Base Indicator:	Rigid	Rodent Screen:	Included
Bearing Grease Type:	Polyrex EM (-20F +300F)	RoHS Status:	ROHS COMPLIANT
Blower:	None	Shaft Extension Location:	Pulley End

Current @ Voltage:	17.700 A @ 460.0 V	Shaft Ground Indicator:	No Shaft Grounding
	35.400 A @ 230.0 V	Shaft Rotation:	Reversible
	37.400 A @ 208.0 V	Shaft Slinger Indicator:	No Slinger
Design Code:	B	Speed Code:	Single Speed
Drip Cover:	No Drip Cover	Motor Standards:	NEMA
Duty Rating:	CONT	Starting Method:	Direct on line
Electrically Isolated Bearing:	Not Electrically Isolated	Thermal Device - Bearing:	None
Feedback Device:	NO FEEDBACK	Thermal Device - Winding:	None
Front Face Code:	Standard	Vibration Sensor Indicator:	No Vibration Sensor
Front Shaft Indicator:	None	Winding Thermal 1:	None
Heater Indicator:	No Heater	Winding Thermal 2:	None

Nameplate NP3553LUA

CAT.NO.	EJMM3314T					
SPEC.	37F784L867G1					
HP	15					
VOLTS	230/460					
AMPS	35.4/17.7					
RPM	3485					
FRAME	215JM		HZ	60	PH	3
SF	1.15		CODE	G	DES	B
NEMA NOM. EFF	90.2		PF	88	CLASS	F
RATING	40C AMB-CONT					
CC	010A		USABLE AT 208V		37.4	
DE	6309		ODE	6206		
ENCL	OPSB		SN			
VPWM INVERTER READY						
CT30-60(2:1) VT3-60(20:1)						
USABLE AT	50HZ 15HP 190/380V 44/22.0A				SF1.0	

AC Induction Motor Performance Data

Record # 85595

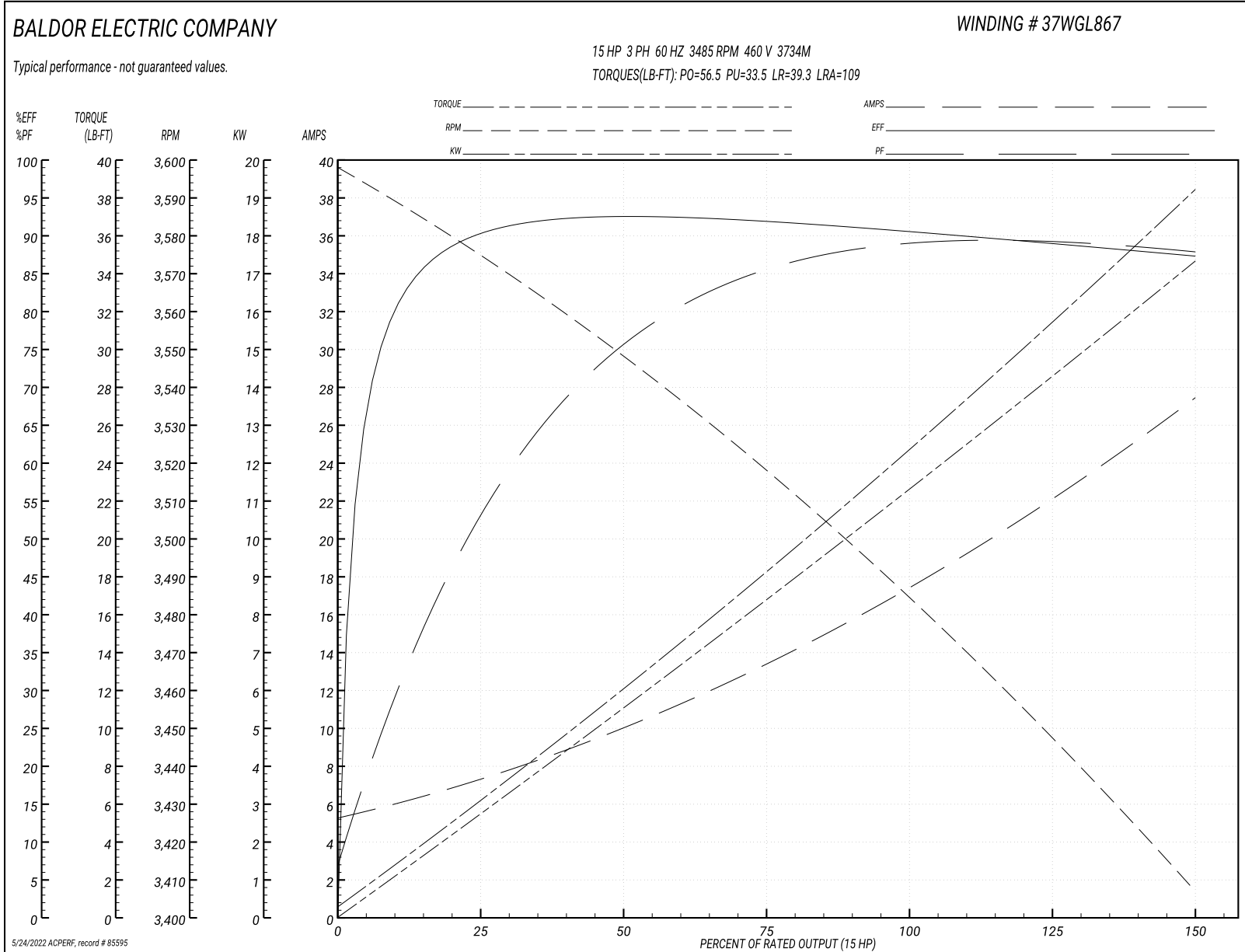
Preliminary Data Sheet

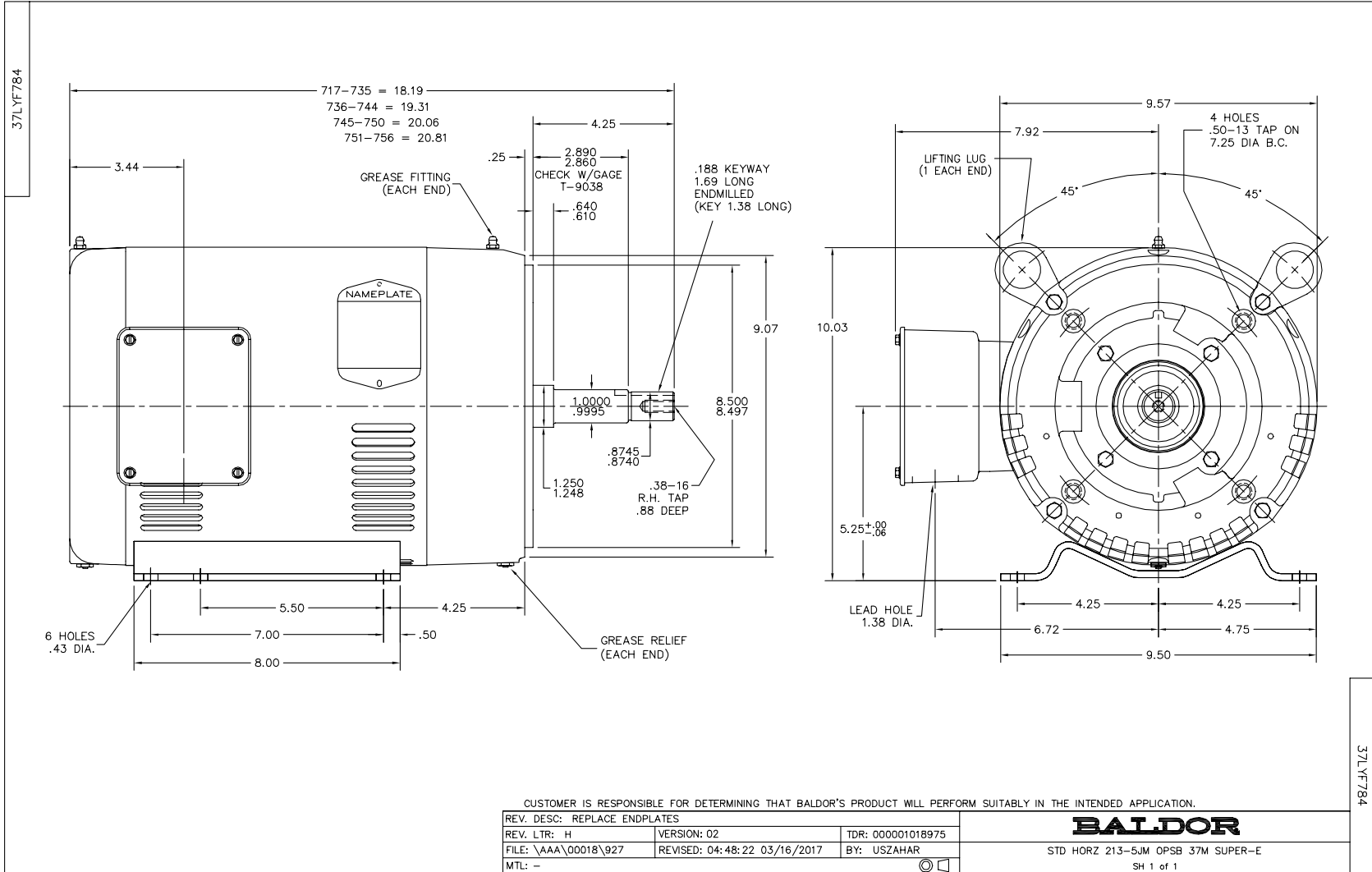
Winding: 37WGL867-R001		Type: 3734M	Enclosure: OPSB	
Nameplate Data			460 V, 60 Hz: High Voltage Connection	
Rated Output (HP)	15	Full Load Torque	22.6 LB-FT	
Volts	230/460	Start Configuration	direct on line	
Full Load Amps	35.4/17.7	Breakdown Torque	56.5 LB-FT	
R.P.M.	3485	Pull-up Torque	33.5 LB-FT	
Hz	60 Phase	Locked-rotor Torque	39.3 LB-FT	
NEMA Design Code	B KVA Code	Starting Current	109 A	
Service Factor (S.F.)	1.15	No-load Current	5.57 A	
NEMA Nom. Eff.	90.2 Power Factor	Line-line Res. @ 25°C	0.761 Ω	
Rating - Duty	40C AMB-CONT	Temp. Rise @ Rated Load	48°C	
S.F. Amps	40.8/20.4	Temp. Rise @ S.F. Load	63°C	
		Locked-rotor Power Factor	41.3	
		Rotor inertia	0.31 lb-ft ²	

Load Characteristics 460 V, 60 Hz, 15 HP

% of Rated Load	25	50	75	100	125	150	S.F.
Power Factor	57	77	85	88	89	88	89
Efficiency	90	92.3	91.8	90.6	88.9	86.8	89.3
Speed	3574	3547	3518	3486	3448	3406	3457
Line amperes	6.92	9.85	13.5	17.7	22.2	27.3	20.4

Performance Graph at 460V, 60Hz, 15.0HP Typical performance - Not guaranteed values





CD0005

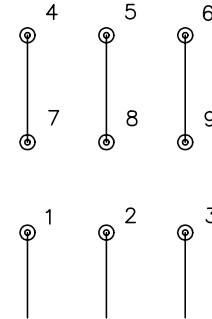


LOW VOLTAGE
(2Y)



LINE

HIGH VOLTAGE
(1Y)



LINE

NOTES:

1. INTERCHANGE ANY TWO LINE LEADS TO REVERSE ROTATION.
2. OPTIONAL THERMOSTATS ARE PROVIDED WHEN SPECIFIED.
3. ACTUAL NUMBER OF INTERNAL PARALLEL CIRCUITS MAY BE A MULTIPLE OF THOSE SHOWN ABOVE.
4. LEAD COLORS ARE OPTIONAL. LEADS MUST ALWAYS BE NUMBERED AS SHOWN.

REV. DESC: REVISE TO SHOW OPTIONAL COLORS

REV. LTR: E BY: JLP

REVISED: 01/19/99 10:15

TDR: 0171435

90000

FILE: AAA00005140

MDL: -

MTL: -

BALDOR ELECTRIC Co.

3PH, DV, 9 LEADS

CD0005