

**BALDOR® • RELIANCE** 

**Product Information Packet**

**EJPM2534T**

**30HP,3510RPM,3PH,60HZ,284JP,3948M,OPSB,F**

Part Detail							
Revision:	P	Status:	PRD/A	Change #:		Proprietary:	No
Type:	AC	Elec. Spec:	39WGX286	CD Diagram:	CD0005	Mfg Plant:	
Mech. Spec:	39E303	Layout:	39LYE303	Poles:	02	Created Date:	05-05-2009
Base:	RG	Eff. Date:	11-23-2020	Leads:	9#8		

Specs			
Catalog Number:	EJPM2534T	Heater Indicator:	No Heater
Enclosure:	OPSB	Insulation Class:	F
Frame:	284JP	Inverter Code:	Inverter Ready
Frame Material:	Steel	KVA Code:	F
Output @ Frequency:	30.000 HP @ 60 HZ	Lifting Lugs:	Standard Lifting Lugs
Synchronous Speed @ Frequency:	3600 RPM @ 60 HZ	Locked Bearing Indicator:	Locked Bearing
Voltage @ Frequency:	460.0 V @ 60 HZ	Motor Lead Quantity/Wire Size:	9 @ 8 AWG
	230.0 V @ 60 HZ	Motor Lead Exit:	Ko Box
XP Class and Group:	None	Motor Lead Termination:	Flying Leads
XP Division:	Not Applicable	Motor Type:	3948M
Agency Approvals:	UR	Mounting Arrangement:	F1
	CSA EEV	Power Factor:	92
	CSA	Product Family:	General Purpose
Auxillary Box:	No Auxillary Box	Pulley End Bearing Type:	Ball
Auxillary Box Lead Termination:	None	Pulley Face Code:	C-Face
Base Indicator:	Rigid	Pulley Shaft Indicator:	Tapped & Key
Bearing Grease Type:	Polyrex EM (-20F +300F)	Rodent Screen:	Included
Blower:	None	Shaft Extension Location:	Pulley End

<b>Current @ Voltage:</b>	33.000 A @ 460.0 V	<b>Shaft Ground Indicator:</b>	No Shaft Grounding
	66.000 A @ 230.0 V	<b>Shaft Rotation:</b>	Reversible
	74.000 A @ 208.0 V	<b>Shaft Slinger Indicator:</b>	Shaft Slinger
<b>Design Code:</b>	B	<b>Speed Code:</b>	Single Speed
<b>Drip Cover:</b>	No Drip Cover	<b>Motor Standards:</b>	NEMA
<b>Duty Rating:</b>	CONT	<b>Starting Method:</b>	Direct on line
<b>Electrically Isolated Bearing:</b>	Not Electrically Isolated	<b>Thermal Device - Bearing:</b>	None
<b>Feedback Device:</b>	NO FEEDBACK	<b>Thermal Device - Winding:</b>	None
<b>Front Face Code:</b>	Standard	<b>Vibration Sensor Indicator:</b>	No Vibration Sensor
<b>Front Shaft Indicator:</b>	None	<b>Winding Thermal 1:</b>	None
		<b>Winding Thermal 2:</b>	None

Nameplate NP2138LUA												
CAT.NO.	EJPM2534T			P/N				ENCLOSURE	OPSB			
SPEC.	39E303X286		CC	010A		FRAME	284JP		S/N			
HP	30			CLASS	F		HZ	60				
RPM	3510			PH	3		DES	B				
VOLT	230/460			KVA-CODE	F		ODE BRG	6208		DE BRG	6312	
AMP	66/33			USABLE AT 208V	74							
RATING	40C AMB-CONT			GREASE	POLYREX EM							
NEMA-NOM-EFF	91.7		PF	92		SER.F.	1.15					
HTR-VOLTS	50HZ 30HP 190/380V 82/41A							SF1.0				
	HTR-AMPS											

**AC Induction Motor Performance Data**

Record # 13125

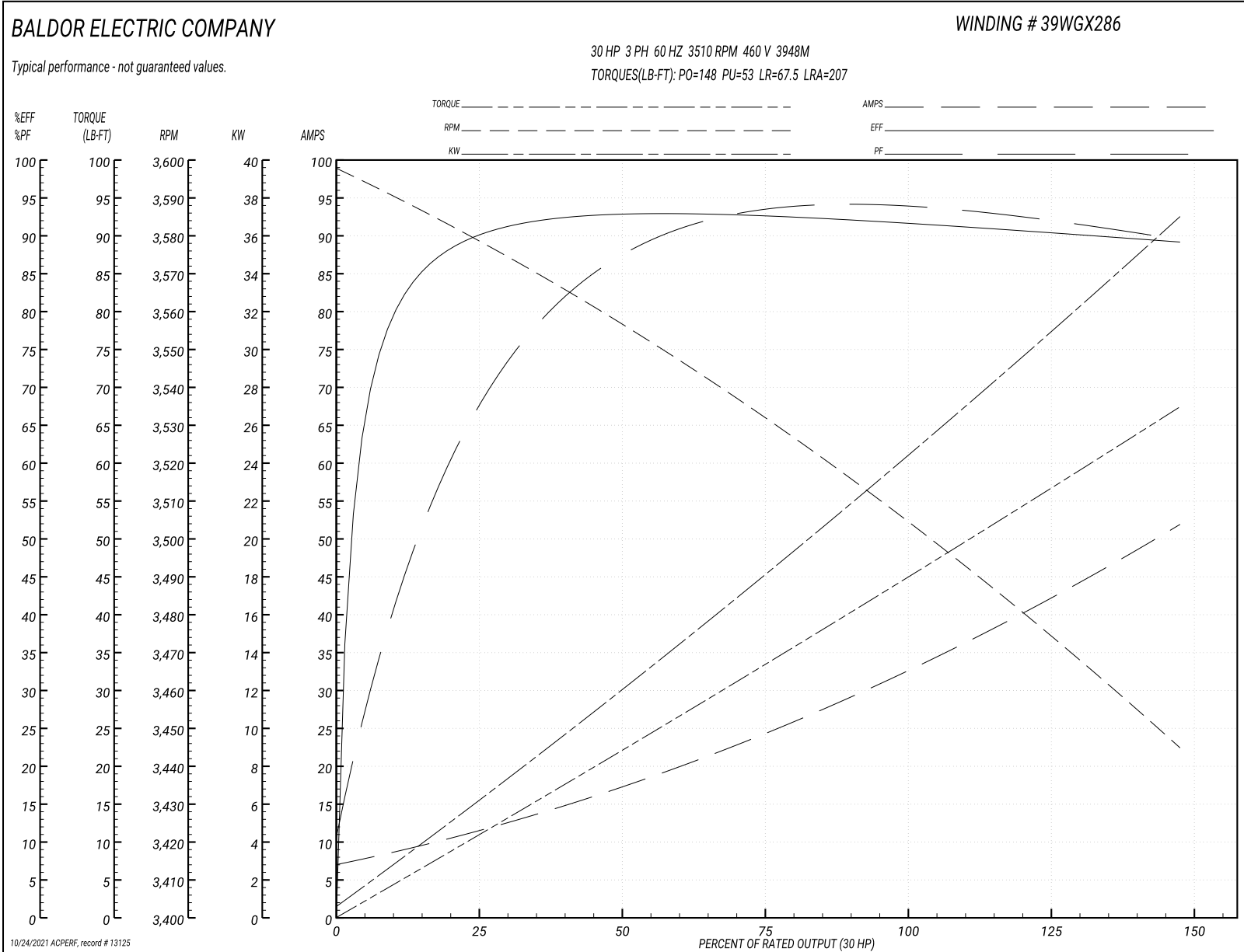
Typical performance - not guaranteed values

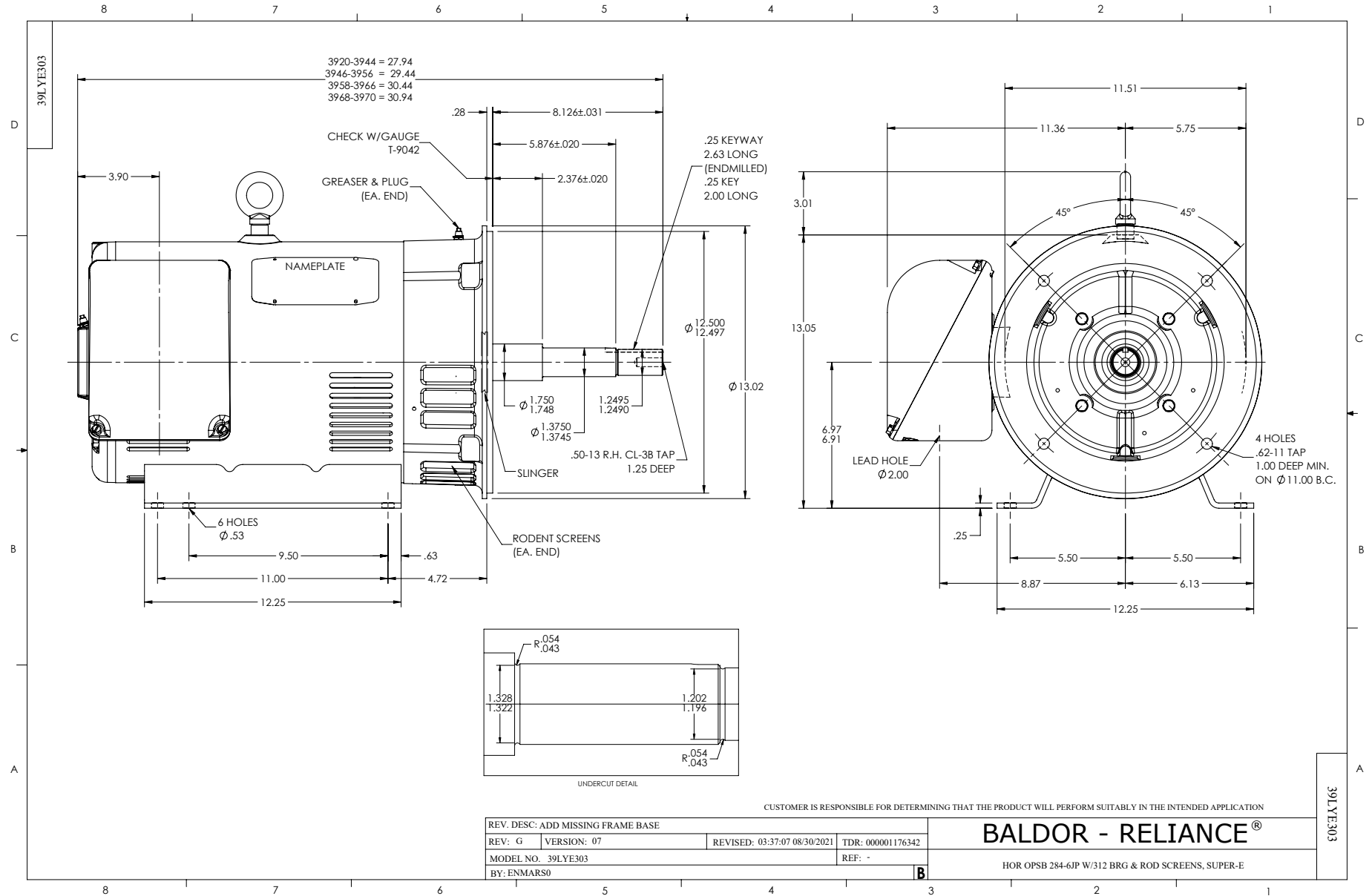
Winding: 39WGX286-R001		Type: 3948M	Enclosure: OPSB
<b>Nameplate Data</b>		<b>460 V, 60 Hz: High Voltage Connection</b>	
Rated Output (HP)	30	Full Load Torque	45 LB-FT
Volts	230/460	Start Configuration	direct on line
Full Load Amps	66/33	Breakdown Torque	148 LB-FT
R.P.M.	3510	Pull-up Torque	53 LB-FT
Hz	60 Phase	Locked-rotor Torque	67.5 LB-FT
NEMA Design Code	B KVA Code	Starting Current	207 A
Service Factor (S.F.)	1.15	No-load Current	7.51 A
NEMA Nom. Eff.	91.7 Power Factor	Line-line Res. @ 25°C	0.342 Ω
Rating - Duty	40C AMB-CONT	Temp. Rise @ Rated Load	38°C
S.F. Amps		Temp. Rise @ S.F. Load	48°C
		Locked-rotor Power Factor	28
		Rotor inertia	1.23 LB-FT <sup>2</sup>

**Load Characteristics 460 V, 60 Hz, 30 HP**

% of Rated Load	25	50	75	100	125	150	S.F.
Power Factor	70	87	91	92	92	92	92
Efficiency	89.4	92.5	92.6	91.8	90.7	89	91.1
Speed	3577	3555	3531	3505	3478	3443	3489
Line amperes	10.9	17.2	24.9	33.1	41.7	51.8	38.26

Performance Graph at 460V, 60Hz, 30.0HP Typical performance - Not guaranteed values

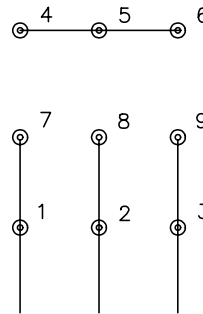




CD0005

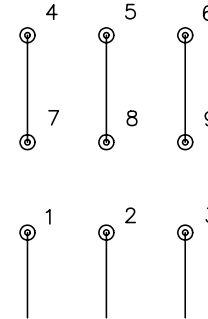


LOW VOLTAGE  
(2Y)



LINE

HIGH VOLTAGE  
(1Y)



LINE

NOTES:

1. INTERCHANGE ANY TWO LINE LEADS TO REVERSE ROTATION.
2. OPTIONAL THERMOSTATS ARE PROVIDED WHEN SPECIFIED.
3. ACTUAL NUMBER OF INTERNAL PARALLEL CIRCUITS MAY BE A MULTIPLE OF THOSE SHOWN ABOVE.
4. LEAD COLORS ARE OPTIONAL. LEADS MUST ALWAYS BE NUMBERED AS SHOWN.

REV. DESC: REVISE TO SHOW OPTIONAL COLORS

REV. LTR: E BY: JLP

REVISED: 01/19/99 10:15

TDR: 0171435

90000

FILE: AAA00005140

MDL: -

MTL: -

**BALDOR ELECTRIC Co.**

3PH, DV, 9 LEADS

CD0005