

**BALDOR® • RELIANCE** 

**Product Information Packet**

**EM2558T-5**

**150HP,1785RPM,3PH,60HZ,444T,A44062M,ODP**

Part Detail							
Revision:	K	Status:	PRD/A	Change #:		Proprietary:	No
Type:	AC	Elec. Spec:	A44WG3532	CD Diagram:	416820-036	Mfg Plant:	
Mech. Spec:		Layout:	617428-042	Poles:	04	Created Date:	12-17-2010
Base:		Eff. Date:	09-27-2023	Leads:	3#1		

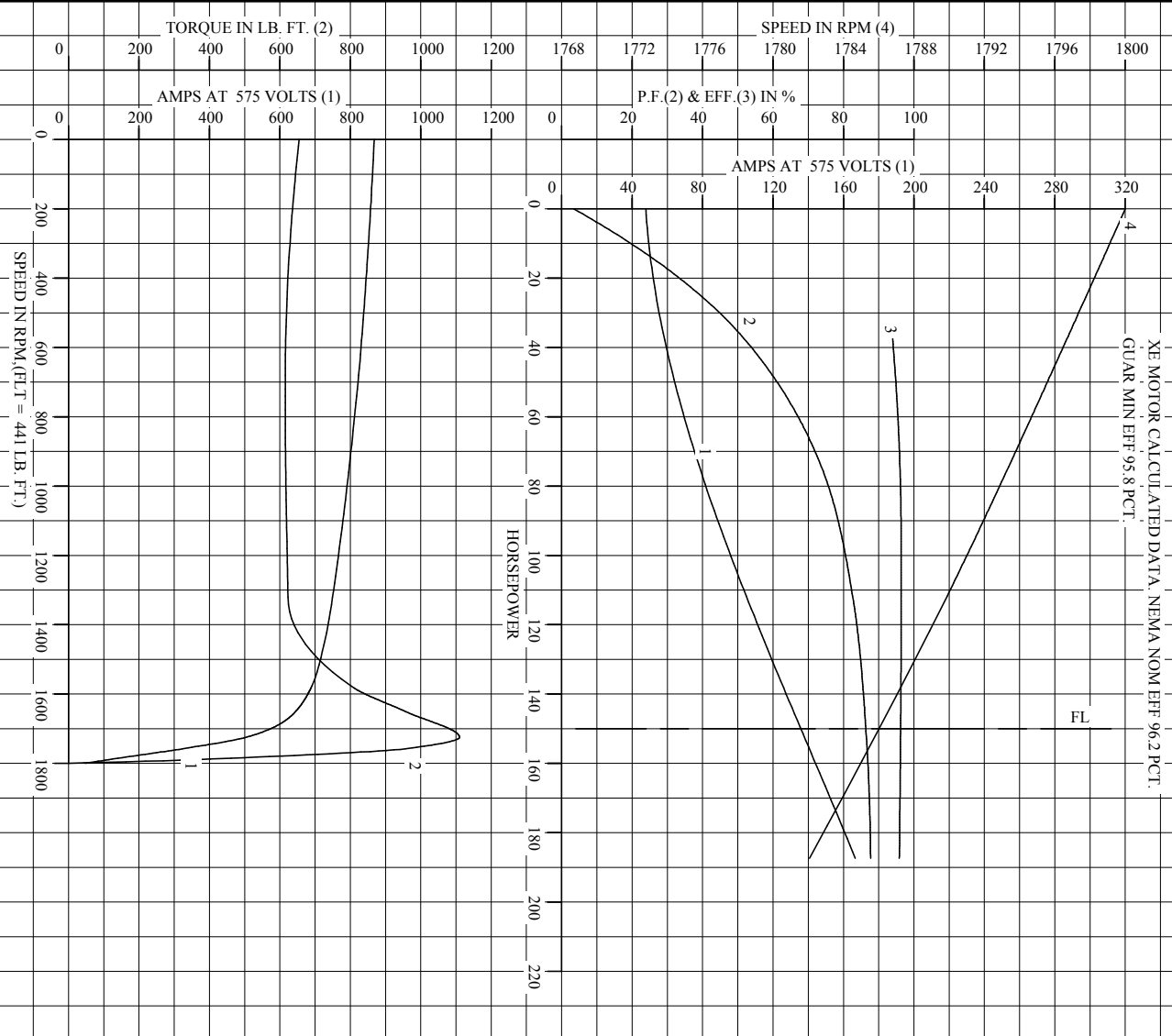
Specs			
Catalog Number:	EM2558T-5	Heater Indicator:	No Heater
Enclosure:	DP	Insulation Class:	F
Frame:	444T	Inverter Code:	Inverter Ready
Frame Material:	Iron	KVA Code:	G
Motor Letter Type:	Three Phase	Lifting Lugs:	No Lifting Lugs
Output @ Frequency:	150.000 HP @ 60 HZ	Motor Lead Quantity/Wire Size:	3 @ 1 AWG
Synchronous Speed @ Frequency:	1800 RPM @ 60 HZ	Motor Type:	A44062M
Voltage @ Frequency:	575.0 V @ 60 HZ	Mounting Arrangement:	F1
Haz Area Class and Group:	None	Power Factor:	86
Haz Area Division:	Not Applicable	Product Family:	Other
Agency Approvals:	CCSAUSEEV	Pulley End Bearing Type:	Ball
Auxillary Box:	No Auxillary Box	Pulley Face Code:	Standard
Base Indicator:	Rigid	Shaft Ground Indicator:	No Shaft Grounding
Bearing Grease Type:	Polyrex EM (-20F +300F)	Shaft Rotation:	Reversible
Current @ Voltage:	136.000 A @ 575.0 V	Shaft Slinger Indicator:	No Slinger
Design Code:	B	Speed Code:	Single Speed
Drip Cover:	No Drip Cover	Motor Standards:	NEMA
Duty Rating:	CONT	Starting Method:	Direct on line

<b>Feedback Device:</b>	NO FEEDBACK	<b>Thermal Device - Bearing:</b>	None
		<b>Thermal Device - Winding:</b>	None

Nameplate NP2377L									
CAT.NO.	EM2558T-5	SPEC NO.	P44G1798						
HP	150	AMPS	136	VOLTS	575	DESIGN	B		
FRAME	444T	RPM	1785	HZ	60	AMB	40	SF	1.15
DRIVE END BEARING	90BC03J30X	PHASE	3	DUTY	CONT	INSUL.CLASS	F		
OPP D.E. BEARING	90BC03J30X	TYPE	P	ENCL	DP	CODE	G		
SER.NO.		POWER FACTOR	86	NEMA-NOM-EFFICIENCY	96.2				
		MAX CORR KVAR	30.0	GUARANTEED EFFICIENCY	95.8				
		NEMA NOM/CSA QUOTED EFF							
		MOTOR WEIGHT							

REL. S.O.		RPM 1785	S.F. 1.15	ROTOR 418143-040-PE
FRAME 444T		VOLTS 575	NEMA DESIGN B	TEST S.O. ---
HP 150		AMPS 135	CODE LETTER G	TEST DATE ---
TYPE P		DUTY CONT	ENCLOSURE PRXE	STATOR RES. @ 25 °C .0498
PHASE/HERTZ 3/60		AMB °C/INSUL 40/F	E/S 497797	OHMS (BETWEEN LINES)

XE MOTOR CALCULATED DATA: NEMA NOM EFF 96.2 PCT.  
 GUAR MIN EFF 95.8 PCT.



AMPERES SHOWN FOR 575 VOLT CONNECTION, IF OTHER VOLTAGE CONNECTIONS ARE AVAILABLE, THE AMPERES WILL VARY INVERSELY WITH THE RATED VOLTAGE.

<p><b>BALDOR</b> A MEMBER OF THE ABB GROUP</p>	DR. BY J.F. ISAO	<p><b>A-C MOTOR</b> <b>PERFORMANCE</b> <b>CURVES</b></p> <p>A44W/G3532-R001 ISSUE DATE 04/18/12</p>
	CK. BY W.L. SMITH	
	APP. BY W.L. SMITH	
	DATE 04/18/12	


REL. S.O.	FRAME	HP	TYPE	PHASE/HERTZ	RPM	VOLTS
	444T	150	P	3/60	1785	575
AMPS	DUTY	AMB °C/ INSUL.	S.F.	NEMA DESIGN	CODE LETTER	ENCL.
135	CONT	40/F	1.15	B	G	PRXXE
E/S	ROTOR	TEST S.O.	TEST DATE	STATOR RES. @25 °C (OHMS (BETWEEN LINES))		
497797	418143-040-PE	---	---	.0498		

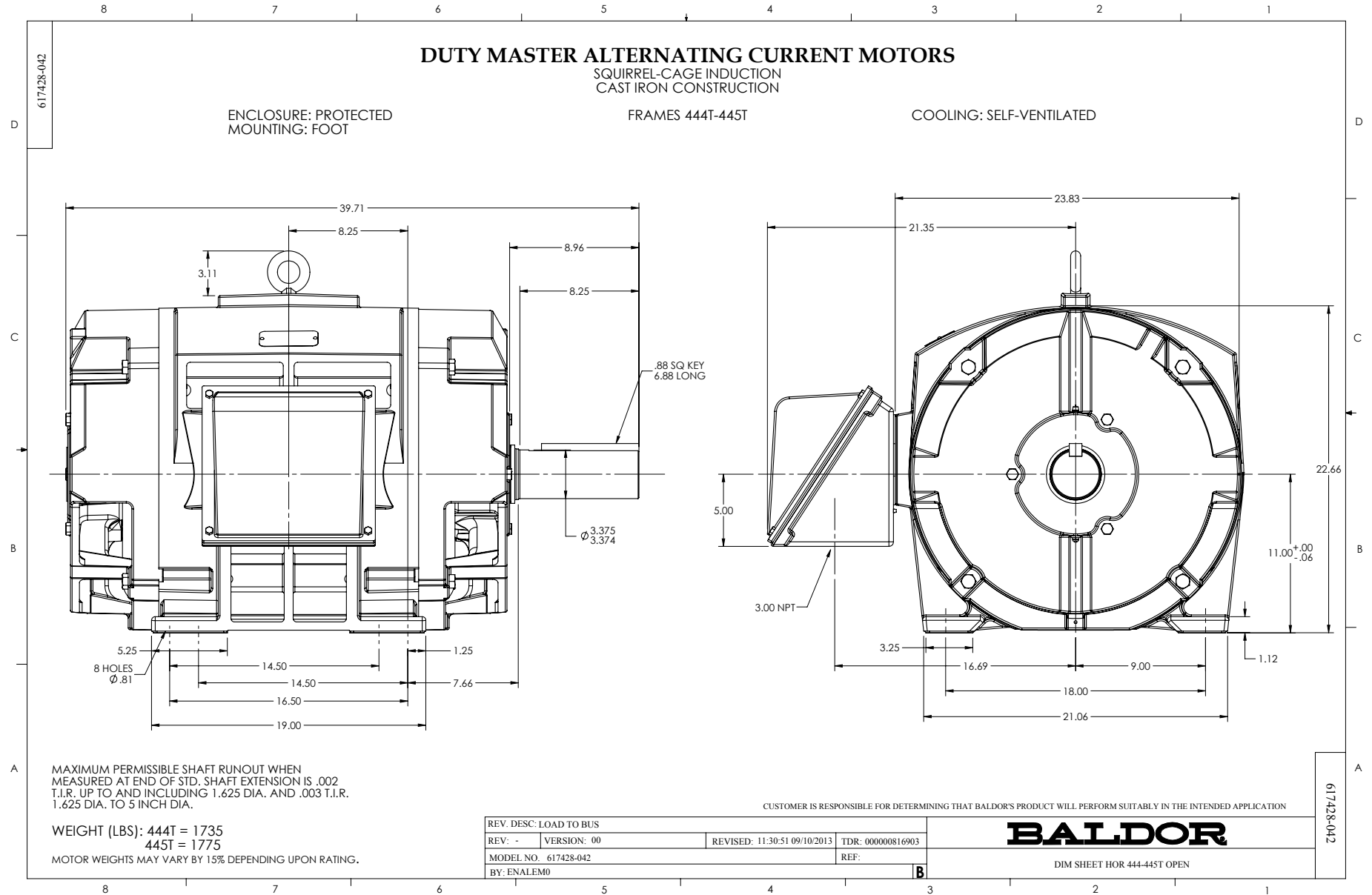
PERFORMANCE						
LOAD	HP	AMPERES	RPM	POWER FACTOR %	EFFICIENCY %	
NO LOAD	0	47.9	1800	3.40	0	
1/4	37.5	57.7	1797	51.9	94.0	
2/4	75.0	79.1	1793	73.9	96.1	
3/4	112	106	1790	82.7	96.4	
4/4	150	135	1786	86.3	96.2	
5/4	187	167	1782	87.7	95.9	

SPEED TORQUE						
	RPM	TORQUE % FULL LOAD	TORQUE LB.-FT.	AMPERES		
LOCKED ROTOR	0	148	655	868		
PULL UP	720	139	615	820		
BREAKDOWN	1725	252	1110	504		
FULL LOAD	1786	100	441	135		

AMPERES SHOWN FOR 575. VOLT CONNECTION. IF OTHER VOLTAGE CONNECTIONS ARE AVAILABLE, THE AMPERES WILL VARY INVERSELY WITH THE RATED VOLTAGE

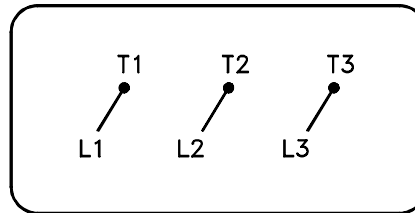
REMARKS: XE MOTOR CALCULATED DATA. NEMA NOM EFF 96.2 PCT.  
GUAR MIN EFF 95.8 PCT.

 A MEMBER OF THE ABB GROUP	DR. BY J. P. TSAO CK. BY W. L. SMITH APP. BY W. L. SMITH DATE 04/18/12	A-C MOTOR PERFORMANCE DATA A44WG3532-R001 ISSUE DATE 04/18/12
--	---	--



416820-036

A-C MOTOR  
 CONNECTION DIAGRAM  
 STANDARD 3 LEAD CONNECTED



(N.P. 1575-BA)

416820-036

REV. DESC: LOADED TO BUS, C/R 335225		
REV. LTR: -	VERSION: 00	TDR: 000000538207
FILE: \MGA\00000\682	REVISED: 11:54:06 04/30/2010	
MTL: -	BY: RAGRA	

**BALDOR**

CONN DIAG - STANDARD 3 LEAD  
 SH 1 of 1