

BALDOR® • RELIANCE 

Product Information Packet

EM3120T-G

1.5HP,3490RPM,3PH,60HZ,143T,3518M,OPSB,F

Part Detail							
Revision:	T	Status:	PRD/A	Change #:		Proprietary:	No
Type:	AC	Elec. Spec:	35WGM761	CD Diagram:	CD0005	Mfg Plant:	
Mech. Spec:	35Z948	Layout:	35LYZ948	Poles:	02	Created Date:	11-17-2011
Base:	RG	Eff. Date:	02-21-2022	Leads:	9#18		

Specs			
Catalog Number:	EM3120T-G	Heater Indicator:	No Heater
Enclosure:	OPSB	Insulation Class:	H
Frame:	143T	Inverter Code:	Inverter Ready
Frame Material:	Steel	KVA Code:	L
Motor Letter Type:	Three Phase	Lifting Lugs:	No Lifting Lugs
Output @ Frequency:	1.500 HP @ 60 HZ	Locked Bearing Indicator:	Locked Bearing
Synchronous Speed @ Frequency:	3600 RPM @ 60 HZ	Motor Lead Quantity/Wire Size:	9 @ 18 AWG
Voltage @ Frequency:	460.0 V @ 60 HZ	Motor Lead Exit:	Ko Box
	230.0 V @ 60 HZ	Motor Lead Termination:	Flying Leads
XP Class and Group:	None	Motor Type:	3518M
XP Division:	Not Applicable	Mounting Arrangement:	F1
Agency Approvals:	NEMA_PREMIUM	Power Factor:	83
	UR	Product Family:	General Purpose
	NEMA PREMIUM	Pulley End Bearing Type:	Ball
	CSA EEV	Pulley Face Code:	Standard
Auxillary Box:	No Auxillary Box	Pulley Shaft Indicator:	Standard
Auxillary Box Lead Termination:	None	Rodent Screen:	None
Base Indicator:	Rigid	RoHS Status:	ROHS COMPLIANT

Bearing Grease Type:	Polyrex EM (-20F +300F)	Shaft Extension Location:	Pulley End
Blower:	None	Shaft Ground Indicator:	Shaft Grounding
Current @ Voltage:	4.000 A @ 230.0 V	Shaft Rotation:	Reversible
	4.200 A @ 208.0 V	Shaft Slinger Indicator:	No Slinger
	2.000 A @ 460.0 V	Speed Code:	Single Speed
Design Code:	B	Motor Standards:	NEMA
Drip Cover:	No Drip Cover	Starting Method:	Direct on line
Duty Rating:	CONT	Thermal Device - Bearing:	None
Electrically Isolated Bearing:	Not Electrically Isolated	Thermal Device - Winding:	None
Feedback Device:	NO FEEDBACK	Vibration Sensor Indicator:	No Vibration Sensor
Front Face Code:	Standard	Winding Thermal 1:	None
Front Shaft Indicator:	None	Winding Thermal 2:	None

Nameplate NP3553LUA

CAT.NO.	EM3120T-G							
SPEC.	35Z948M761G1							
HP	1.5							
VOLTS	230/460							
AMPS	4/2							
RPM	3490							
FRAME	143T		HZ	60		PH	3	
SF	1.15		CODE	L	DES	B	CLASS	H
NEMA NOM. EFF	84		PF	83				
RATING	40C AMB-CONT							
CC	010A		USABLE AT 208V			N/A		
DE	6205		ODE	6203				
ENCL	OPSB		SN					
VPWM INVERTER READY								
CT30-60(2:1) VT3-60(20:1)								
USABLE AT	50HZ 1.5HP 190/380V 4.6/2.3A						SF1.0	

AC Induction Motor Performance Data

Record # 53128

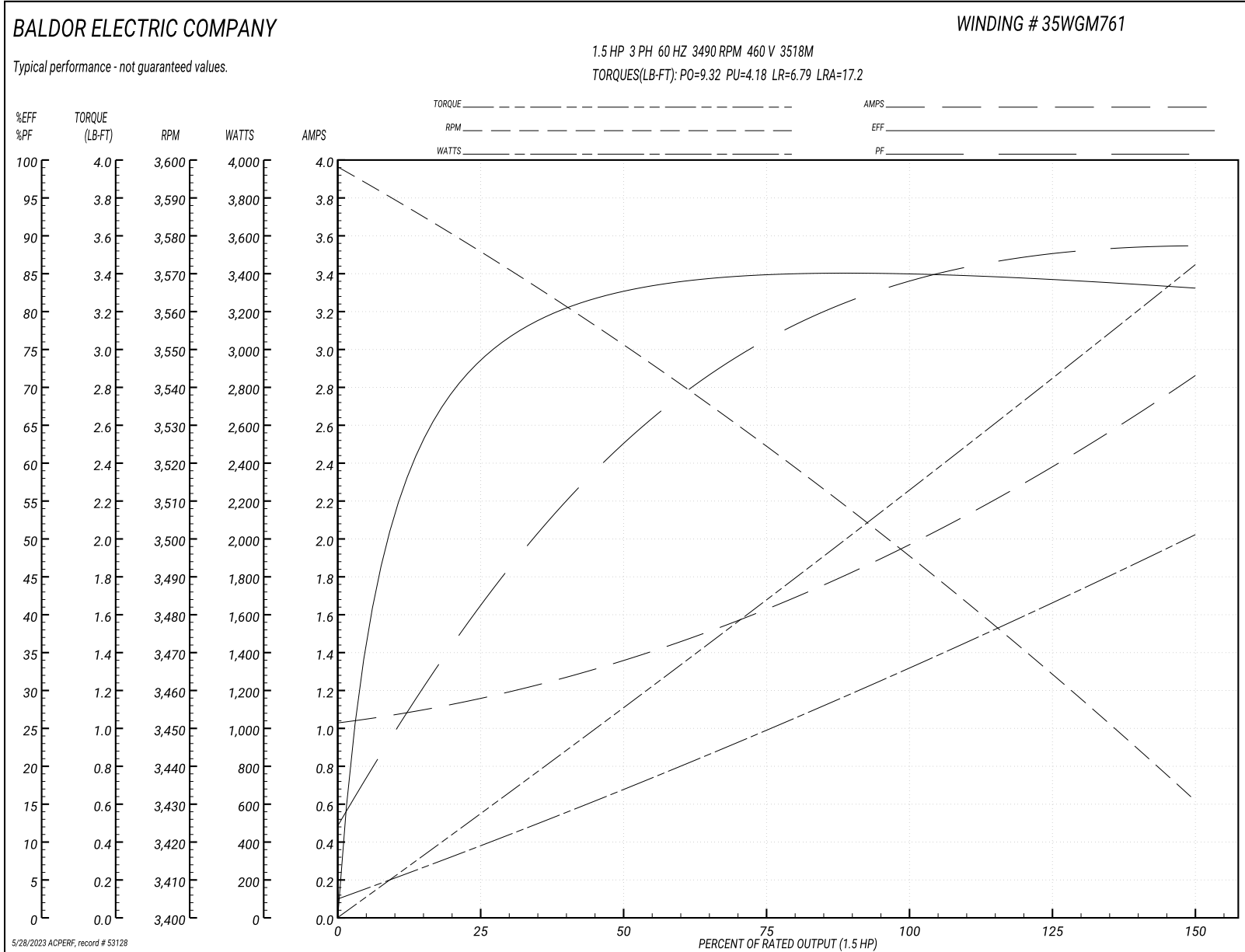
Typical performance - not guaranteed values

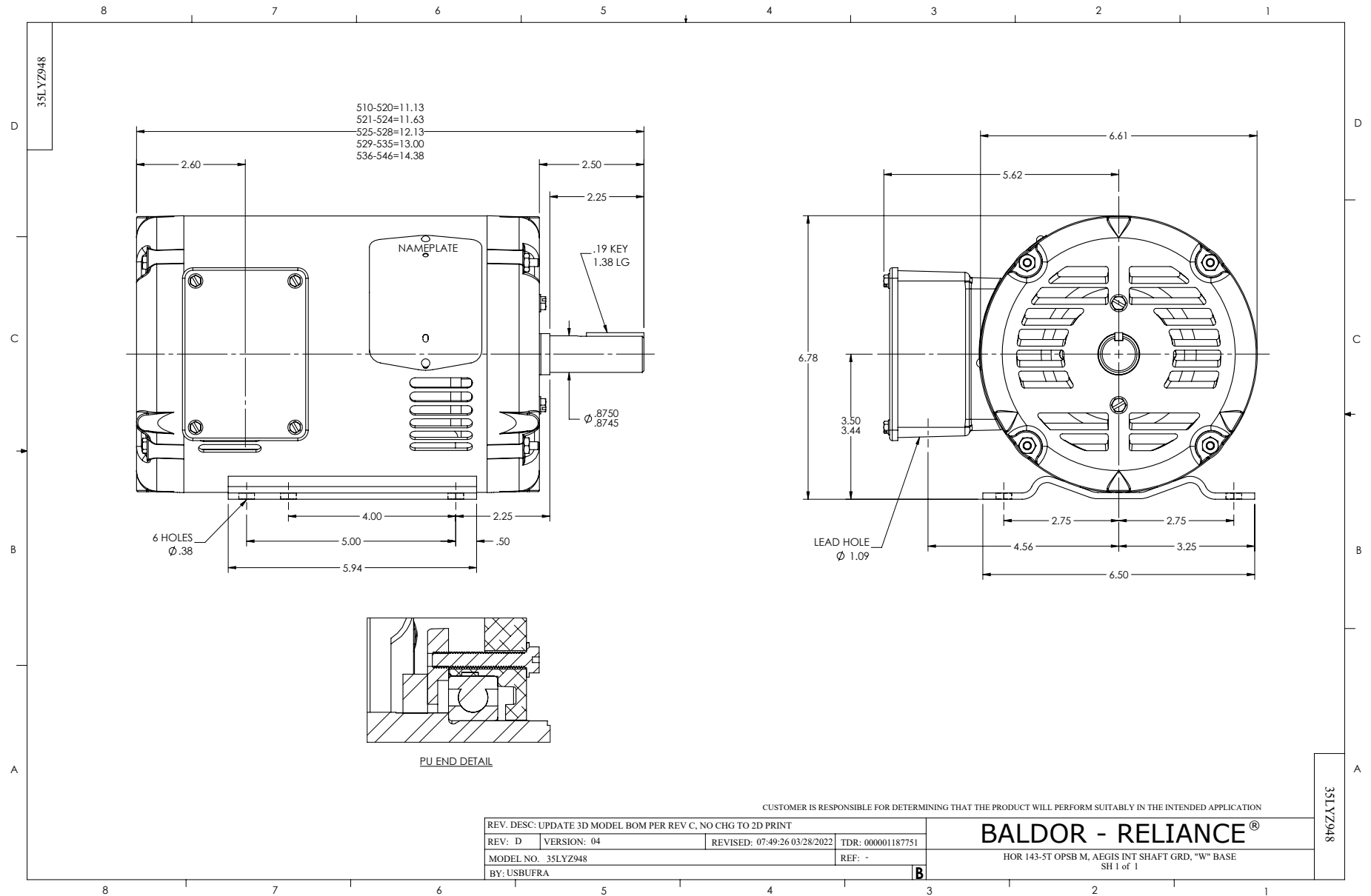
Winding: 35WGM761-R009		Type: 3518M		Enclosure: OPSB	
Nameplate Data			460 V, 60 Hz: High Voltage Connection		
Rated Output (HP)	1.5	Full Load Torque	2.26 LB-FT		
Volts	230/460	Start Configuration	direct on line		
Full Load Amps	4/2	Breakdown Torque	9.32 LB-FT		
R.P.M.	3490	Pull-up Torque	4.18 LB-FT		
Hz	60 Phase	3	Locked-rotor Torque	6.79 LB-FT	
NEMA Design Code	B KVA Code	L	Starting Current	17.2 A	
Service Factor (S.F.)	1.15		No-load Current	1.05 A	
NEMA Nom. Eff.	84 Power Factor	83	Line-line Res. @ 25°C	12.7 Ω	
Rating - Duty	40C AMB-CONT		Temp. Rise @ Rated Load	24°C	
S.F. Amps			Temp. Rise @ S.F. Load	28°C	
			Locked-rotor Power Factor	64	
			Rotor inertia	0.0493 LB-FT ²	

Load Characteristics 460 V, 60 Hz, 1.5 HP

% of Rated Load	25	50	75	100	125	150	S.F.
Power Factor	43	64	77	83	87	89	85
Efficiency	73.9	82.4	85.1	85.1	84.3	83.1	84.6
Speed	3574	3550	3524	3496	3465	3430	3477
Line amperes	1.14	1.35	1.63	1.99	2.41	2.84	2.24

Performance Graph at 460V, 60Hz, 1.5HP Typical performance - Not guaranteed values





CD0005

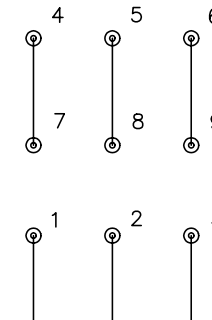


LOW VOLTAGE
(2Y)



LINE

HIGH VOLTAGE
(1Y)



LINE

NOTES:

1. INTERCHANGE ANY TWO LINE LEADS TO REVERSE ROTATION.
2. OPTIONAL THERMOSTATS ARE PROVIDED WHEN SPECIFIED.
3. ACTUAL NUMBER OF INTERNAL PARALLEL CIRCUITS MAY BE A MULTIPLE OF THOSE SHOWN ABOVE.
4. LEAD COLORS ARE OPTIONAL. LEADS MUST ALWAYS BE NUMBERED AS SHOWN.

REV. DESC: REVISE TO SHOW OPTIONAL COLORS			
REV. LTR: E	BY: JLP	REVISED: 01/19/99 10:15	TDR: 0171435
900000		FILE: AAA00005140	MDL: -
		MTL: -	

BALDOR ELECTRIC Co.

3PH, DV, 9 LEADS

CD0005