

**BALDOR® • RELIANCE** 

**Product Information Packet**

**EM4310T-G**

**60HP,3565RPM,3PH,60HZ,364TS,A36056M,TEFC**

Part Detail							
Revision:	N	Status:	PRD/A	Change #:		Proprietary:	No
Type:	AC	Elec. Spec:	A36WG3648	CD Diagram:	416820-002	Mfg Plant:	
Mech. Spec:		Layout:	617428-025	Poles:	02	Created Date:	12-15-2011
Base:		Eff. Date:	03-11-2019	Leads:	3#4,6#6		

Specs			
Catalog Number:	EM4310T-G	Design Code:	B
Enclosure:	TEFC	Drip Cover:	No Drip Cover
Frame:	364TS	Duty Rating:	CONT
Frame Material:	Iron	Feedback Device:	NO FEEDBACK
Output @ Frequency:	50.000 HP @ 50 HZ	Heater Indicator:	No Heater
	60.000 HP @ 60 HZ	Insulation Class:	H
Synchronous Speed @ Frequency:	3600 RPM @ 60 HZ	Inverter Code:	Inverter Ready
Voltage @ Frequency:	380.0 V @ 50 HZ	KVA Code:	G
	230.0 V @ 60 HZ	Lifting Lugs:	Standard Lifting Lugs
	190.0 V @ 50 HZ	Motor Lead Quantity/Wire Size:	3 @ 4 AWG
	460.0 V @ 60 HZ	Motor Type:	A36056M
XP Class and Group:	None	Mounting Arrangement:	F1
XP Division:	Not Applicable	Power Factor:	89
Agency Approvals:	CSA EEV	Product Family:	General Industrial
	CCSA US	Pulley End Bearing Type:	Ball
Auxillary Box:	No Auxillary Box	Pulley Face Code:	Standard
Base Indicator:	Rigid	Shaft Ground Indicator:	Shaft Grounding
Bearing Grease Type:	Polyrex EM (-20F +300F)	Shaft Rotation:	Reversible

<b>Current @ Voltage:</b>	67.100 A @ 380.0 V	<b>Shaft Slinger Indicator:</b>	No Slinger
	66.300 A @ 460.0 V	<b>Speed Code:</b>	Single Speed
	146.000 A @ 208.0 V	<b>Motor Standards:</b>	NEMA
	134.000 A @ 190.0 V	<b>Starting Method:</b>	Direct on line
		<b>Thermal Device - Bearing:</b>	None
		<b>Thermal Device - Winding:</b>	None

Nameplate NP2496L

MOBIL POLYREX EM

Nameplate NP2381L			
SPEC NO.	A36-1305-3648	CAT.NO.	EM4310T-G
HP	60//50	PHASE	3
RPM	3565//2960	HZ	60//50
VOLTS	230/460//190/380	DUTY	CONT
AMPS	132/66.3//134/67.1	ENCL	TEFC
DRIVE END BEARING	65BC03J30X	NEMA-NOM-EFFICIENCY	95
OPP D.E. BEARING	65BC03J30X		
SER.NO.		USABLE AT 208V @ 146 AMPS	
	VPWM INV DUTY 10:1 CT AT 1.0SF	MOTOR WEIGHT	
		FRAME	364TS
		DESIGN	B
		TYPE	P
		AMB	40
		SF	1.15
		INSUL.CLASS	H
		CODE	G

S/O	FRAME	HP	TYPE	PHASE/ HERTZ	RPM	VOLTS
	365	60	P	3/60	3565	230/460
AMPS	DUTY	AMB °C/ INSUL	S.F.	NEMA DESIGN	CODE LETTER	ENCLOSURE
132/66.3	CONT	40/H	1.15	B	G	TEFC
E/S	ROTOR	TEST S.O.	TEST DATE	STATOR RES. @25 °C OHMS (BETWEEN LINES)		
591878	418141002XE	---	---	.0270/.108		

**PERFORMANCE**


LOAD	HP	AMPERES	RPM	% POWER FACTOR	% EFFICIENCY
NO LOAD	0	16.8	3600	5.35	0
1/4	15.0	22.9	3591	65.8	93.2
2/4	30.0	35.1	3582	84.0	95.3
3/4	45.0	50.0	3573	88.3	95.4
4/4	60.0	66.3	3563	89.2	95.0
5/4	75.0	83.2	3552	89.5	94.3

**SPEED TORQUE**

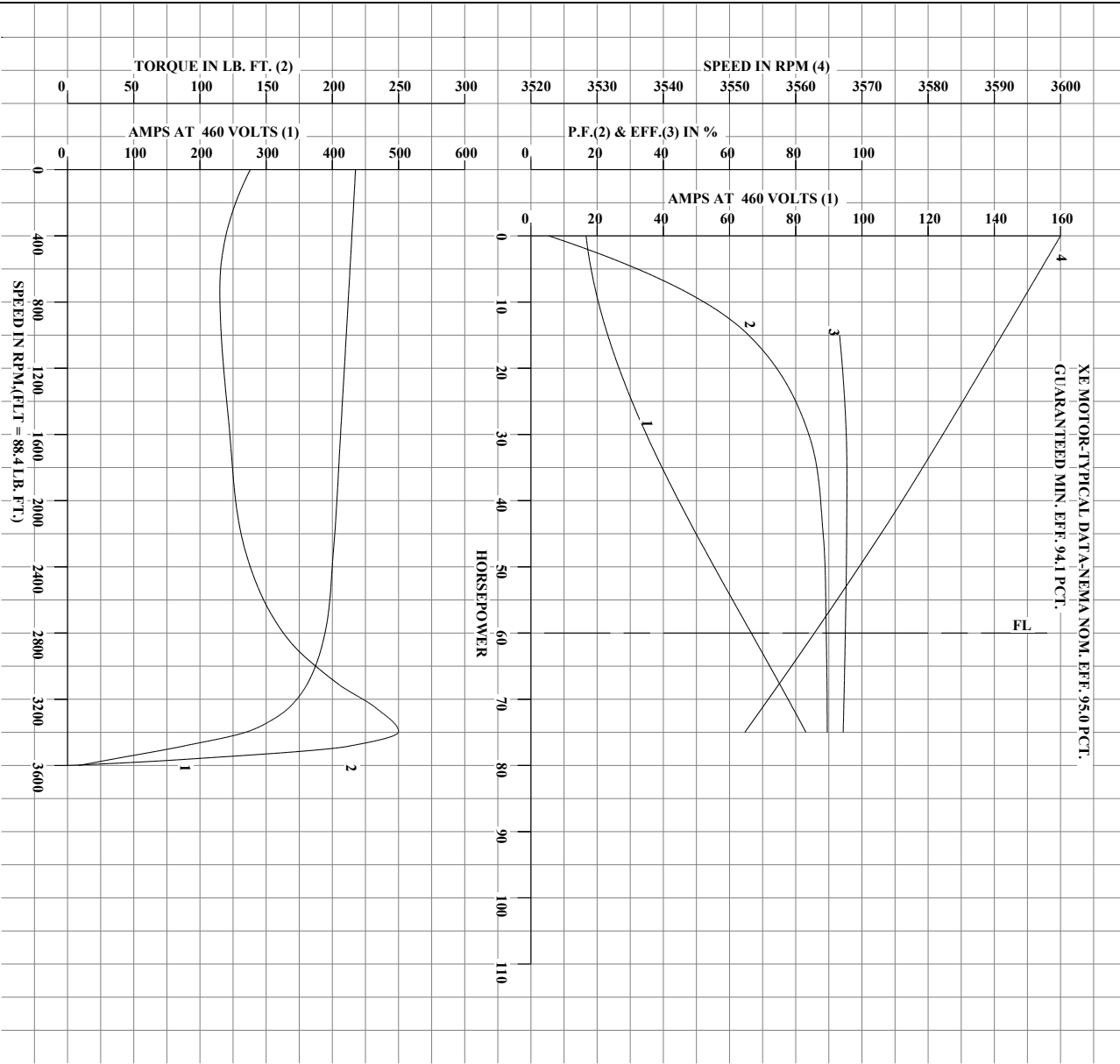
	RPM	% TORQUE FULL LOAD	TORQUE LB.-FT.	AMPERES
LOCKED ROTOR	0	156	138	435
PULL UP	720	130	115	425
BREAKDOWN	3396	283	250	272
FULL LOAD	3563	100	88.4	66.3

AMPERES SHOWN FOR 460 VOLT CONNECTION. IF OTHER CONNECTIONS ARE AVAILABLE, THE AMPERES WILL VARY INVERSELY WITH THE RATED VOLTAGE.

XE MOTOR-TYPICAL DATA-NEMA NOM. EFF. 95.0 PCT.  
GUARANTEED MIN. EFF. 94.1 PCT.

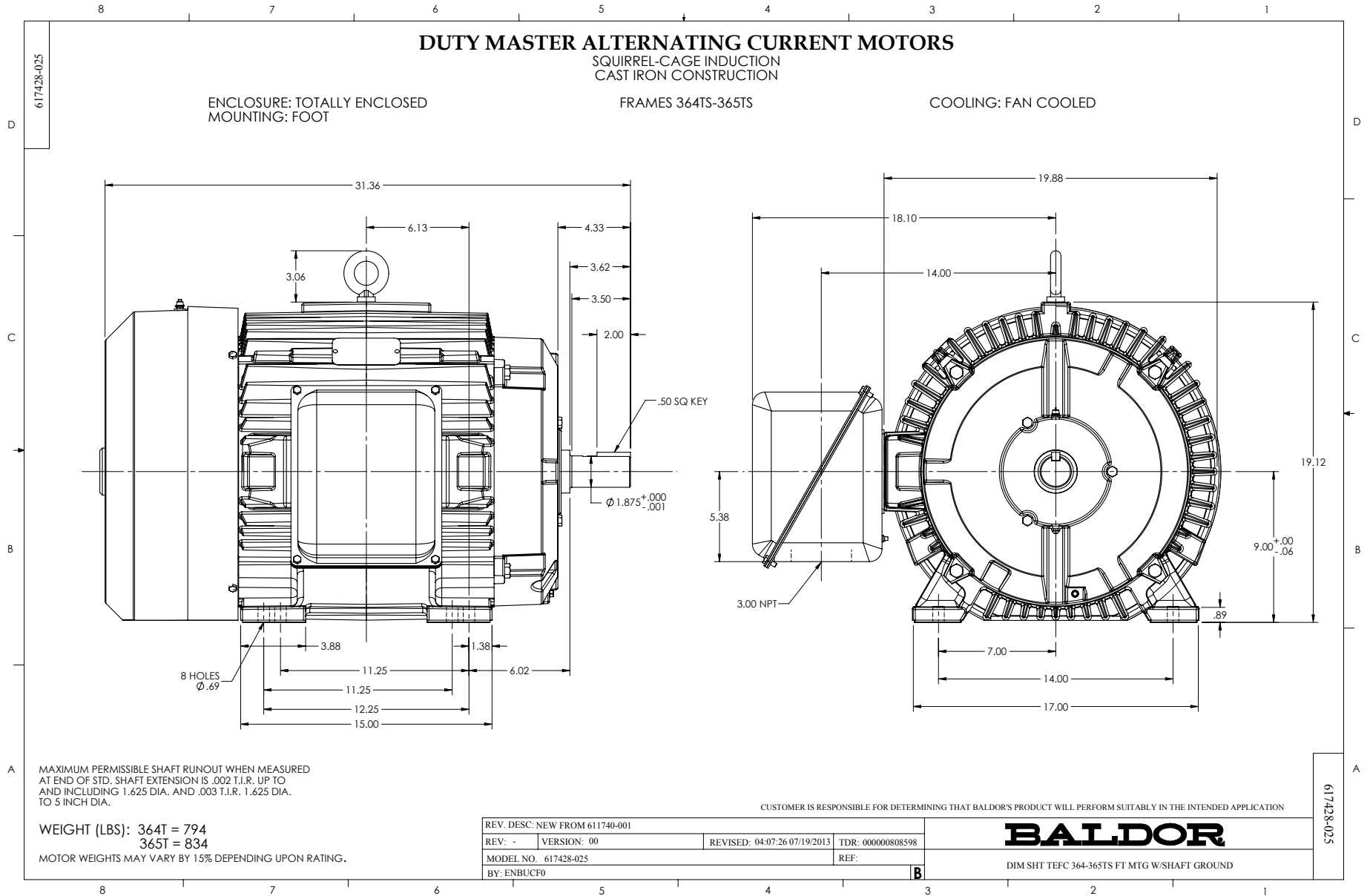
	DRAWN BY: G.R. WEBB	AC MOTOR PERFORMANCE DATA	<b>A36WG3648-R011</b> DATE ISSUED 12/13/11
	CHECKED BY: W.L. SMITH APPROVED BY: W.L. SMITH DATE: 12/13/11		

REL.S.O.	365	RPM	3565	S.F.	1.15	ROTOR	418141002XE
FRAME	365	VOLTS	230/460	NEMA DESIGN	B	TEST S.O.	--
HP	60	AMPS	132/66.3	CODE LETTER	G	TEST DATE	--
TYPE	P	DUTY CONT		ENCLOSURE	TEFC	STATOR RES. @ 25°C	.0270/108
PHASE/HERTZ	3/60	AMB °C/INSUL	40/H	E/S	591878	OHMS (BETWEEN LINES)	



	DRAWN BY: G. R. WEBB	AC MOTOR	<b>A36WG3648-R011</b>
	CHECKED BY: W. L. SMITH	PERFORMANCE	
	APPROVED BY: W. L. SMITH	DATA	
	DATE: 12/13/11		

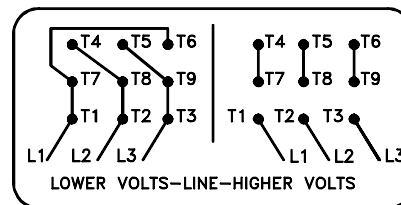
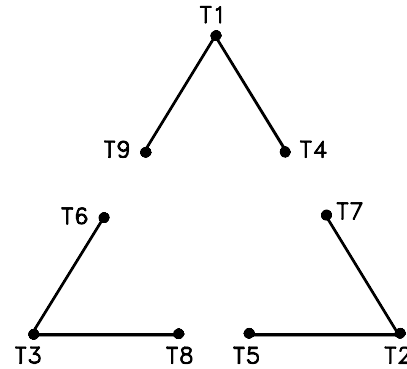
USERCHR1  
 Printed on 01/08/2019 11:25 AM





416820-002

A-C MOTOR  
 CONNECTION DIAGRAM  
 STANDARD 9 LEAD DELTA-CONNECTED



(N.P. 1575-B)

416820-002

REV. DESC: LOADED TO BUS, C/R 335225		
REV. LTR: -	VERSION: 00	TDR: 000000538207
FILE: \MGA\00000\661	REVISED: 10: 47: 51 04/30/2010	
MTL: -	BY: RAGRA	

**BALDOR**

CONN DIAG - STANDARD 9 LEAD, DELTA-CONNECTED

SH 1 of 1