

**BALDOR® • RELIANCE** 

**Product Information Packet**

**EM4316T-G**

**75HP, 1780RPM, 3PH, 60HZ, 365T, A36070M, TEFC**

Part Detail							
Revision:	R	Status:	PRD/A	Change #:		Proprietary:	No
Type:	AC	Elec. Spec:	A36WG1797	CD Diagram:	416820-002	Mfg Plant:	
Mech. Spec:		Layout:	617428-021	Poles:	04	Created Date:	12-14-2011
Base:		Eff. Date:	09-20-2019	Leads:	3#4,6#6		

Specs			
Catalog Number:	EM4316T-G	Design Code:	B
Enclosure:	TEFC	Drip Cover:	No Drip Cover
Frame:	365T	Duty Rating:	CONT
Frame Material:	Iron	Feedback Device:	NO FEEDBACK
Output @ Frequency:	60.000 HP @ 50 HZ	Heater Indicator:	No Heater
	75.000 HP @ 60 HZ	Insulation Class:	H
Synchronous Speed @ Frequency:	1800 RPM @ 60 HZ	Inverter Code:	Inverter Ready
Voltage @ Frequency:	380.0 V @ 50 HZ	KVA Code:	G
	230.0 V @ 60 HZ	Lifting Lugs:	Standard Lifting Lugs
	190.0 V @ 50 HZ	Motor Lead Quantity/Wire Size:	3 @ 4 AWG
	460.0 V @ 60 HZ	Motor Type:	A36070M
XP Class and Group:	None	Mounting Arrangement:	F1
XP Division:	Not Applicable	Power Factor:	86
Agency Approvals:	CSA EEV	Product Family:	General Industrial
	CCSA US	Pulley End Bearing Type:	Ball
Auxillary Box:	No Auxillary Box	Pulley Face Code:	Standard
Base Indicator:	Rigid	Shaft Ground Indicator:	Shaft Grounding
Bearing Grease Type:	Polyrex EM (-20F +300F)	Shaft Rotation:	Reversible

<b>Current @ Voltage:</b>	85.900 A @ 460.0 V	<b>Shaft Slinger Indicator:</b>	No Slinger
	83.800 A @ 380.0 V	<b>Speed Code:</b>	Single Speed
	187.000 A @ 208.0 V	<b>Motor Standards:</b>	NEMA
	171.000 A @ 230.0 V	<b>Starting Method:</b>	Direct on line
		<b>Thermal Device - Bearing:</b>	None
		<b>Thermal Device - Winding:</b>	None

Nameplate NP2496L

MOBIL POLYREX EM

Nameplate NP2381L							
SPEC NO.	A36-1294-1797	CAT.NO.	EM4316T-G	FRAME	365T		
HP	75//60	PHASE	3	DESIGN	B	TYPE	P
RPM	1780//1480	HZ	60//50	AMB	40	SF	1.15
VOLTS	230/460//190/380	DUTY	CONT	INSUL.CLASS	H		
AMPS	171/85.9//168/83.8	ENCL	TEFC	CODE	G		
DRIVE END BEARING	65BC03J30X	NEMA-NOM-EFFICIENCY	95.4				
OPP D.E. BEARING	65BC03J30X						
SER.NO.	USABLE AT 208V @ 187 AMPS						
	VPWM INV DUTY 10:1 CT AT 1.0SF	MOTOR WEIGHT					

S/O	FRAME	HP	TYPE	PHASE/ HERTZ	RPM	VOLTS
	365T	75	P	3/60	1780	230/460
AMPS	DUTY	AMB °C/ INSUL	S.F.	NEMA DESIGN	CODE LETTER	ENCLOSURE
171/85.9	CONT	40/H	1.15	B	G	TEFC
E/S	ROTOR	TEST S.O.	TEST DATE	STATOR RES. @25 °C OHMS (BETWEEN LINES)		
892297	418141043EE	---	---	.0210/.0843		

**PERFORMANCE**

LOAD	HP	AMPERES	RPM	% POWER FACTOR	% EFFICIENCY
NO LOAD	0	26.1	1800	3.86	0
1/4	18.8	33.4	1796	56.1	93.8
2/4	37.5	47.7	1791	77.0	95.7
3/4	56.2	65.8	1786	83.5	95.8
4/4	75.0	85.9	1781	85.6	95.4
5/4	93.8	107	1776	86.7	94.8

**SPEED TORQUE**

	RPM	% FULL LOAD TORQUE	TORQUE LB.-FT.	AMPERES
LOCKED ROTOR	0	196	433	542
PULL UP	1130	166	368	458
BREAKDOWN	1699	252	557	293
FULL LOAD	1781	100	221	85.9

AMPERES SHOWN FOR 460 VOLT CONNECTION. IF OTHER CONNECTIONS ARE AVAILABLE, THE AMPERES WILL VARY INVERSELY WITH THE RATED VOLTAGE.

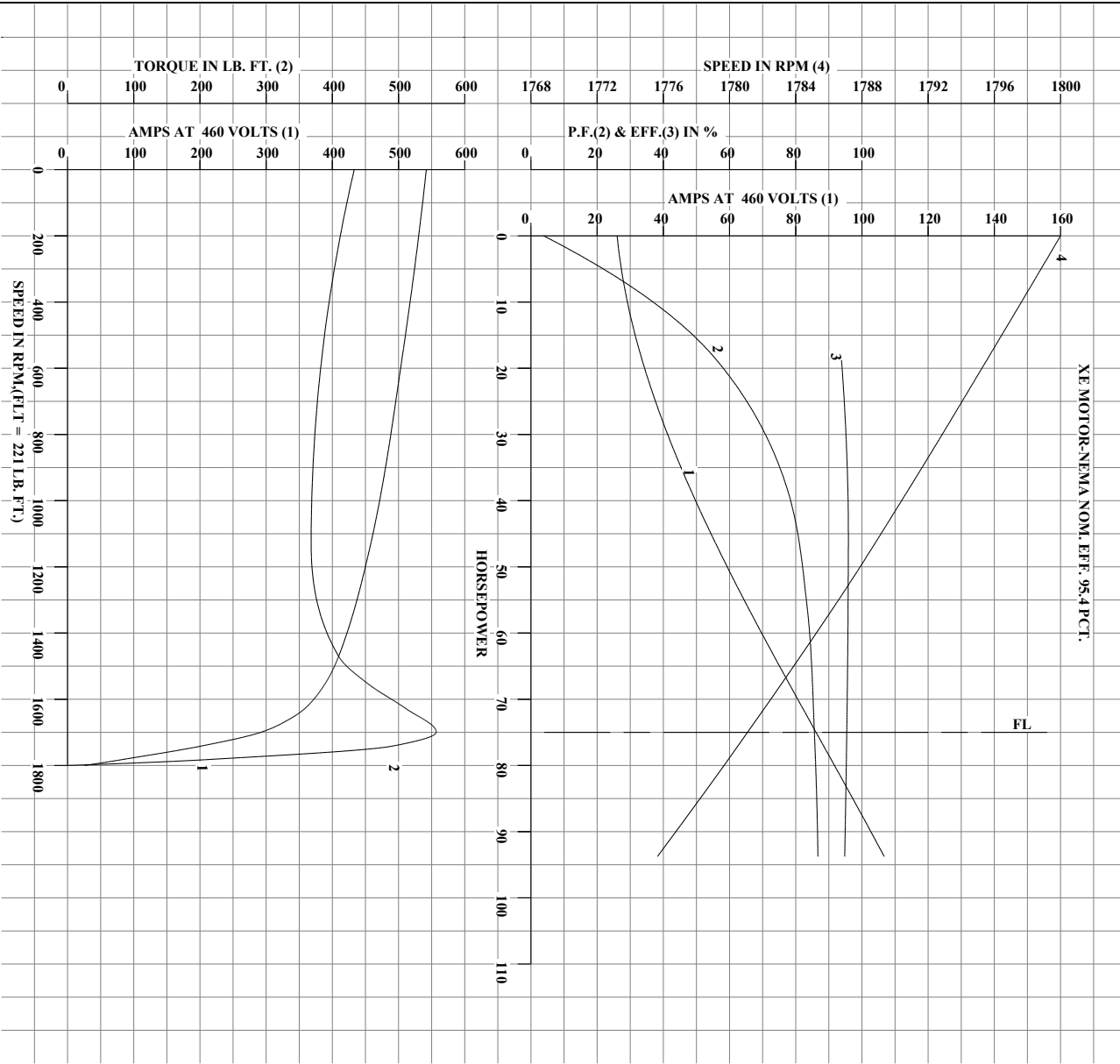
CALCULATED DATA  
XE MOTOR-NEMA NOM. EFF. 95.4 PCT.

	DRAWN BY: G.R. WEBB	AC MOTOR PERFORMANCE DATA	A36WG1797-R003
	CHECKED BY: W.L. SMITH APPROVED BY: W.L. SMITH DATE: 12/13/11		
DATE ISSUED 12/13/11			

USERCHR1

Printed on 01/08/2019 11:08 AM

REL.S.O.	365T	RPM	1780	S.F.	1.15	ROTOR	418141043EE
FRAME	75	VOLTS	230/460	NEMA DESIGN	B	TEST S.O.	CALCULATED DATA
HP	75	AMPS	171/85.9	CODE LETTER	G	TEST DATE	--
TYPE	P	DUTY CONT		ENCLOSURE	TEFC	STATOR RES. @ 25°C	.0210/.0843
PHASE/HERTZ	3/60	AMB °C/INSUL	40/H	E/S	892297	OHMS (BETWEEN LINES)	



AMPERES SHOWN FOR 230/460 VOLT CONNECTION, IF OTHER VOLTAGE CONNECTIONS ARE AVAILABLE, THE AMPERES WILL VARY INVERSELY WITH THE RATED VOLTAGE.



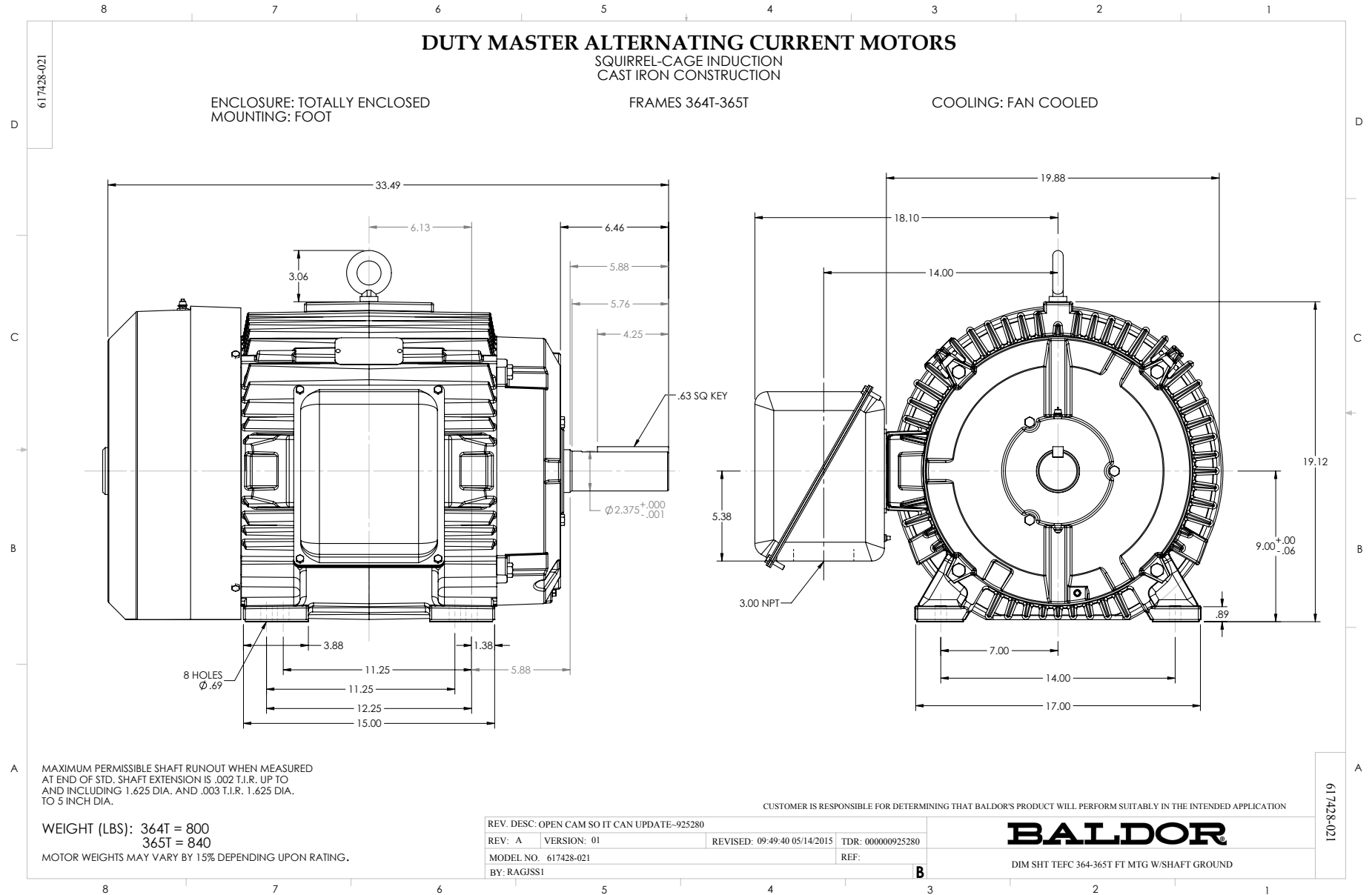
DRAWN BY: G. R. WEBB  
 CHECKED BY: W. L. SMITH  
 APPROVED BY: W. L. SMITH  
 DATE: 12/13/11

AC MOTOR  
 PERFORMANCE  
 DATA

A36WG1797-R003  
 ISSUE DATE: 12/13/11

USERCHR1

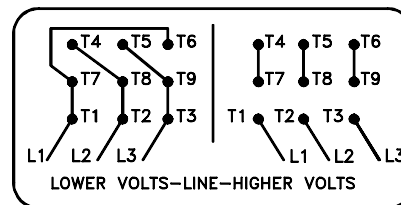
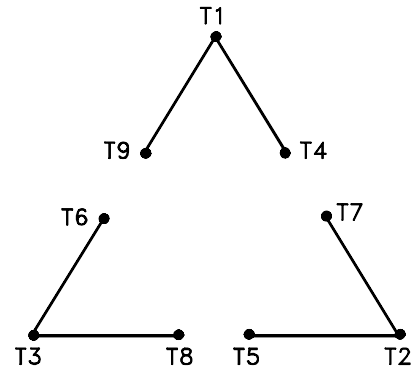
Printed on 01/08/2019 11:08 AM





416820-002

A-C MOTOR  
 CONNECTION DIAGRAM  
 STANDARD 9 LEAD DELTA-CONNECTED



(N.P. 1575-B)

416820-002

REV. DESC: LOADED TO BUS, C/R 335225		
REV. LTR: -	VERSION: 00	TDR: 000000538207
FILE: \MGA\00000\661	REVISED: 10: 47: 51 04/30/2010	
MTL: -	BY: RAGRA	

**BALDOR**

CONN DIAG - STANDARD 9 LEAD, DELTA-CONNECTED

SH 1 of 1