

**BALDOR® • RELIANCE** 

**Product Information Packet**

**GDM3311T**

**7.5HP, 1750RPM, 3PH, 60HZ, 213TZ, 3644M, OPSB**

Part Detail							
Revision:	J	Status:	INA/A	Change #:		Proprietary:	No
Type:	AC	Elec. Spec:	36WGS915	CD Diagram:	CD0005	Mfg Plant:	
Mech. Spec:	36K993	Layout:	36LYK993	Poles:	04	Created Date:	06-04-2012
Base:	RG	Eff. Date:	05-19-2016	Leads:	9#16		

Specs			
Catalog Number:	GDM3311T	Insulation Class:	F
Enclosure:	OPSB	Inverter Code:	Not Inverter
Frame:	213TZ	KVA Code:	J
Frame Material:	Steel	Lifting Lugs:	Standard Lifting Lugs
Output @ Frequency:	7.500 HP @ 60 HZ	Locked Bearing Indicator:	No Locked Bearing
Synchronous Speed @ Frequency:	1800 RPM @ 60 HZ	Motor Lead Quantity/Wire Size:	9 @ 16 AWG
Voltage @ Frequency:	208.0 V @ 60 HZ	Motor Lead Exit:	Ko Box
	230.0 V @ 60 HZ	Motor Lead Termination:	Flying Leads
	460.0 V @ 60 HZ	Motor Type:	3644M
XP Class and Group:	None	Mounting Arrangement:	F1
XP Division:	Not Applicable	Power Factor:	80
Agency Approvals:	UR	Product Family:	General Purpose
	CSA	Product Type:	FARM DUTY
Auxillary Box:	No Auxillary Box	Pulley End Bearing Type:	Ball
Auxillary Box Lead Termination:	None	Pulley Face Code:	Standard
Base Indicator:	Rigid	Pulley Shaft Indicator:	Standard
Bearing Grease Type:	Polyrex EM (-20F +300F)	Rodent Screen:	Included
Blower:	None	Shaft Extension Location:	Pulley End

<b>Current @ Voltage:</b>	19.800 A @ 230.0 V	<b>Shaft Ground Indicator:</b>	No Shaft Grounding
	21.000 A @ 208.0 V	<b>Shaft Rotation:</b>	Reversible
	9.900 A @ 460.0 V	<b>Shaft Slinger Indicator:</b>	No Slinger
<b>Design Code:</b>	A	<b>Speed Code:</b>	Single Speed
<b>Drip Cover:</b>	No Drip Cover	<b>Motor Standards:</b>	NEMA
<b>Duty Rating:</b>	CONT	<b>Starting Method:</b>	Direct on line
<b>Electrically Isolated Bearing:</b>	Not Electrically Isolated	<b>Thermal Device - Bearing:</b>	None
<b>Feedback Device:</b>	NO FEEDBACK	<b>Thermal Device - Winding:</b>	Normally Closed Thermostat
<b>Front Face Code:</b>	Standard	<b>Vibration Sensor Indicator:</b>	No Vibration Sensor
<b>Front Shaft Indicator:</b>	None	<b>Winding Thermal 1:</b>	None
<b>Heater Indicator:</b>	No Heater	<b>Winding Thermal 2:</b>	None

Nameplate NP1256L										
CAT.NO.	GDM3311T									
SPEC.	36K993S915H1									
HP	7.5									
VOLTS	208-230/460									
AMP	21-19.8/9.9									
RPM	1750									
FRAME	213TZ				HZ	60			PH	3
SER.F.	1.15		CODE	J	DES	A		CLASS	F	
NEMA-NOM-EFF	88.5		PF	80						
RATING	40C AMB-CONT									
CC	USABLE AT 208V									
DE	6207				ODE	6205				
ENCL	OPSB		SN							

**AC Induction Motor Performance Data**

Record # 47551

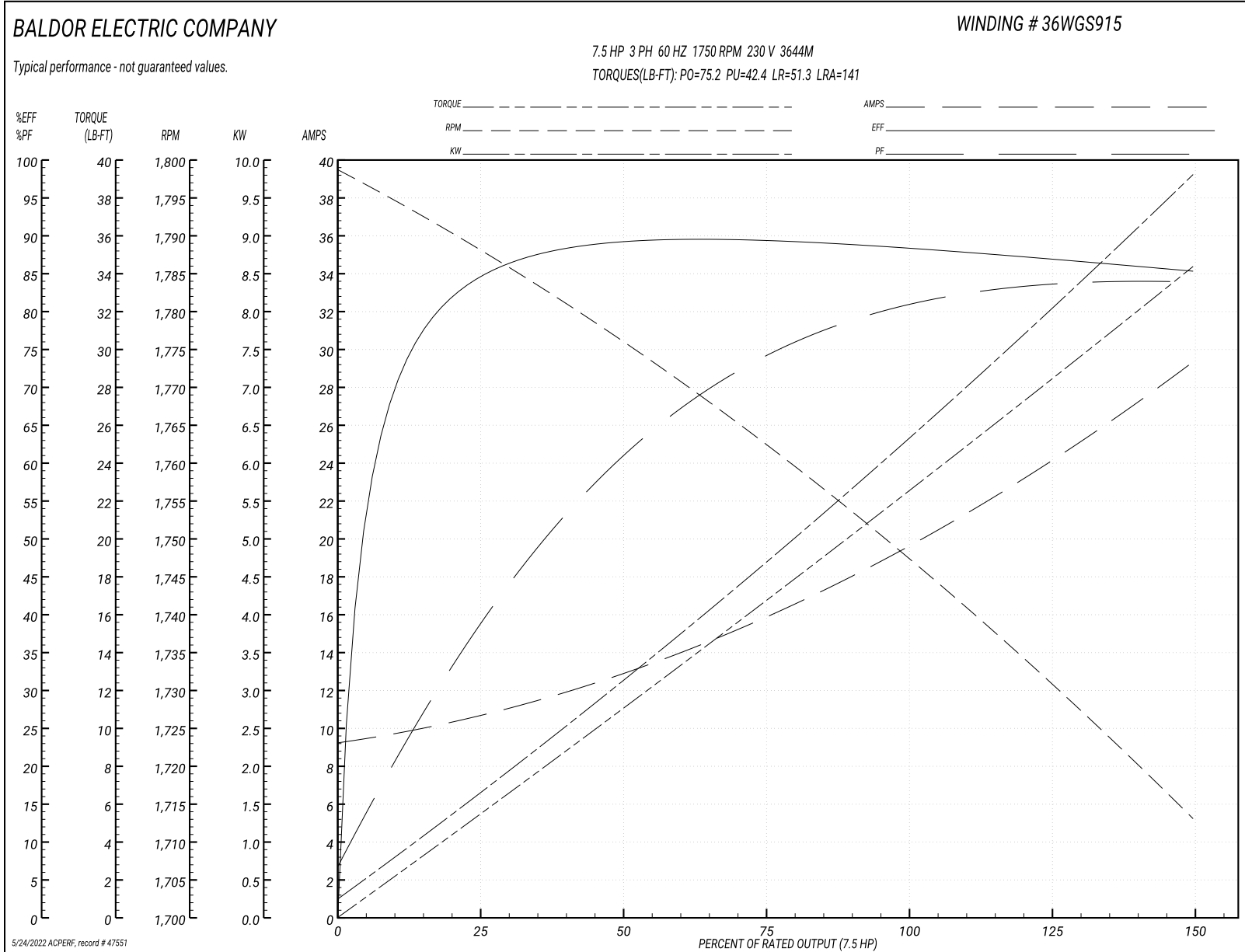
Typical performance - not guaranteed values

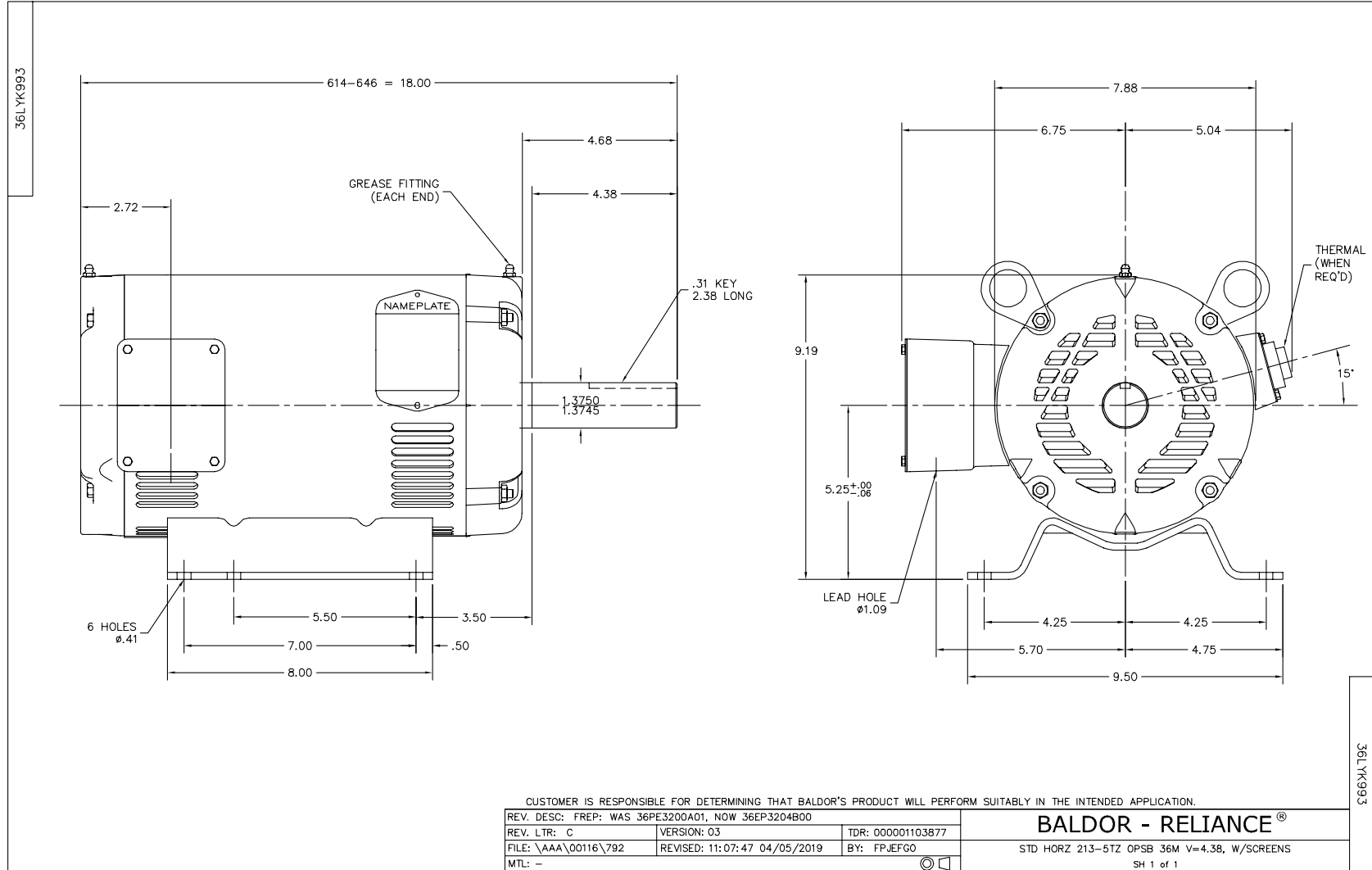
Winding: 36WGS915-R001		Type: 3644M	Enclosure: OPSB	
<b>Nameplate Data</b>			<b>230 V, 60 Hz: Low Voltage Connection</b>	
Rated Output (HP)	7.5	Full Load Torque	22.6 LB-FT	
Volts	208-230/460	Start Configuration	direct on line	
Full Load Amps	21-19.8/9.9	Breakdown Torque	75.2 LB-FT	
R.P.M.	1750	Pull-up Torque	42.4 LB-FT	
Hz	60 Phase	Locked-rotor Torque	51.3 LB-FT	
NEMA Design Code	A KVA Code	Starting Current	141 A	
Service Factor (S.F.)	1.15	No-load Current	9.44 A	
NEMA Nom. Eff.	88.5 Power Factor	Line-line Res. @ 25°C	0.437 Ω	
Rating - Duty	40C AMB-CONT	Temp. Rise @ Rated Load	65°C	
S.F. Amps		Temp. Rise @ S.F. Load	79°C	
		Locked-rotor Power Factor	40.4	
		Rotor inertia	0.41 LB-FT <sup>2</sup>	

**Load Characteristics 230 V, 60 Hz, 7.5 HP**

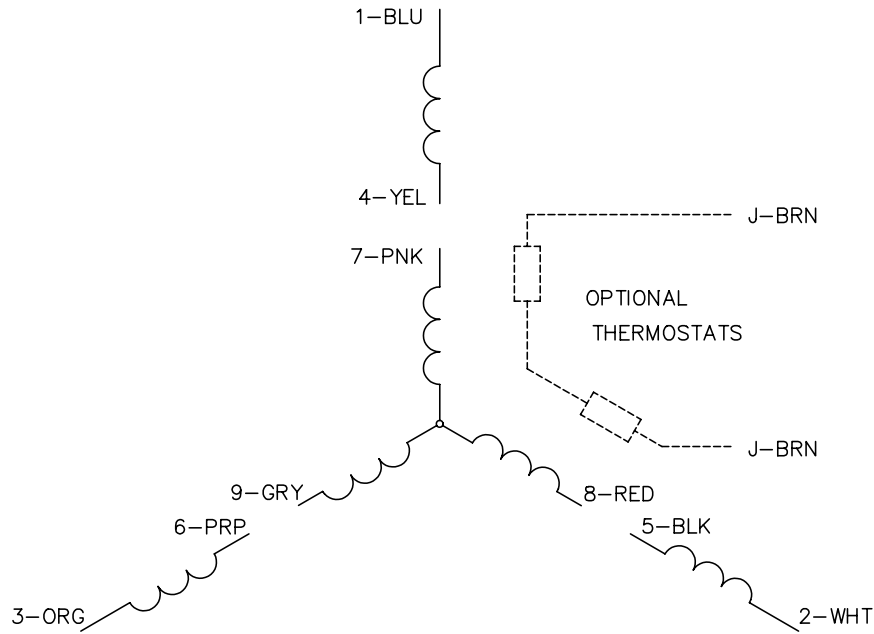
% of Rated Load	25	50	75	100	125	150	S.F.
Power Factor	39	62	74	81	83	84	84
Efficiency	83.7	89.2	89.2	88.8	87	85.3	89
Speed	1788	1776	1762	1748	1731	1713	1750
Line amperes	10.4	12.7	16.1	19.7	24.2	29.2	21.7

Performance Graph at 230V, 60Hz, 7.5HP Typical performance - Not guaranteed values





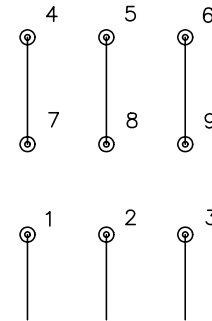
CD0005



LOW VOLTAGE  
(2Y)



HIGH VOLTAGE  
(1Y)



NOTES:

1. INTERCHANGE ANY TWO LINE LEADS TO REVERSE ROTATION.
2. OPTIONAL THERMOSTATS ARE PROVIDED WHEN SPECIFIED.
3. ACTUAL NUMBER OF INTERNAL PARALLEL CIRCUITS MAY BE A MULTIPLE OF THOSE SHOWN ABOVE.
4. LEAD COLORS ARE OPTIONAL. LEADS MUST ALWAYS BE NUMBERED AS SHOWN.

REV. DESC: REVISE TO SHOW OPTIONAL COLORS			
REV. LTR: E	BY: JLP	REVISED: 01/19/99 10:15	TDR: 0171435
90000		FILE: AAA00005140	MDL: -
		MTL: -	

**BALDOR ELECTRIC Co.**

3PH, DV, 9 LEADS

CD0005