

BALDOR® • RELIANCE 

Product Information Packet

GDM3710T

7.5HP, 1770RPM, 3PH, 60HZ, 213TZ, 3732M, TEFC

Part Detail							
Revision:	H	Status:	NLA/A	Change #:		Proprietary:	No
Type:	AC	Elec. Spec:	37WGS150	CD Diagram:	CD0005	Mfg Plant:	
Mech. Spec:	37N385	Layout:	37LYN385	Poles:	04	Created Date:	01-03-2014
Base:	RG	Eff. Date:	03-08-2016	Leads:	9#14 72" LONG		Y

Specs			
Catalog Number:	GDM3710T	Heater Indicator:	No Heater
Enclosure:	TEFC	Insulation Class:	F
Frame:	213TZ	Inverter Code:	Not Inverter
Frame Material:	Steel	KVA Code:	K
Motor Letter Type:	Three Phase	Lifting Lugs:	Standard Lifting Lugs
Output @ Frequency:	7.500 HP @ 60 HZ	Locked Bearing Indicator:	No Locked Bearing
Synchronous Speed @ Frequency:	1800 RPM @ 60 HZ	Motor Lead Quantity/Wire Size:	9 @ 14 AWG
Voltage @ Frequency:	208.0 V @ 60 HZ	Motor Lead Exit:	Ko Box
	230.0 V @ 60 HZ	Motor Lead Termination:	Flying Leads
	460.0 V @ 60 HZ	Motor Type:	3732M
XP Class and Group:	None	Mounting Arrangement:	F1
XP Division:	Not Applicable	Power Factor:	77
Agency Approvals:	UR	Product Family:	General Purpose
	CSA	Product Type:	FARM DUTY
Auxillary Box:	No Auxillary Box	Pulley End Bearing Type:	Sealed Bearing
Auxillary Box Lead Termination:	None	Pulley Face Code:	Standard
Base Indicator:	Rigid	Pulley Shaft Indicator:	Standard
Bearing Grease Type:	Polyrex EM (-20F +300F)	Rodent Screen:	None

Blower:	None	Shaft Extension Location:	Pulley End
Current @ Voltage:	10.100 A @ 460.0 V	Shaft Ground Indicator:	No Shaft Grounding
	20.200 A @ 230.0 V	Shaft Rotation:	Reversible
	22.000 A @ 208.0 V	Shaft Slinger Indicator:	Shaft Slinger
Design Code:	A	Speed Code:	Single Speed
Drip Cover:	No Drip Cover	Motor Standards:	NEMA
Duty Rating:	CONT	Starting Method:	Direct on line
Electrically Isolated Bearing:	Not Electrically Isolated	Thermal Device - Bearing:	None
Feedback Device:	NO FEEDBACK	Thermal Device - Winding:	None
Front Face Code:	Standard	Vibration Sensor Indicator:	No Vibration Sensor
Front Shaft Indicator:	None	Winding Thermal 1:	None
		Winding Thermal 2:	None

Nameplate NP1279L										
CAT.NO.	GDM3710T									
SPEC.	37N385S150H1									
HP	7.5									
VOLTS	208-230/460									
AMP	22-20.2/10.1									
RPM	1770									
FRAME	213TZ			HZ	60		PH	3		
SER.F.	1.15		CODE	K		DES	A		CL	F
NEMA-NOM-EFF	89.5		PF	77						
RATING	40C AMB-CONT									
CC						USABLE AT 208V	N/A			
DE	6307			ODE	6206					
ENCL	TEFC		SN							

AC Induction Motor Performance Data

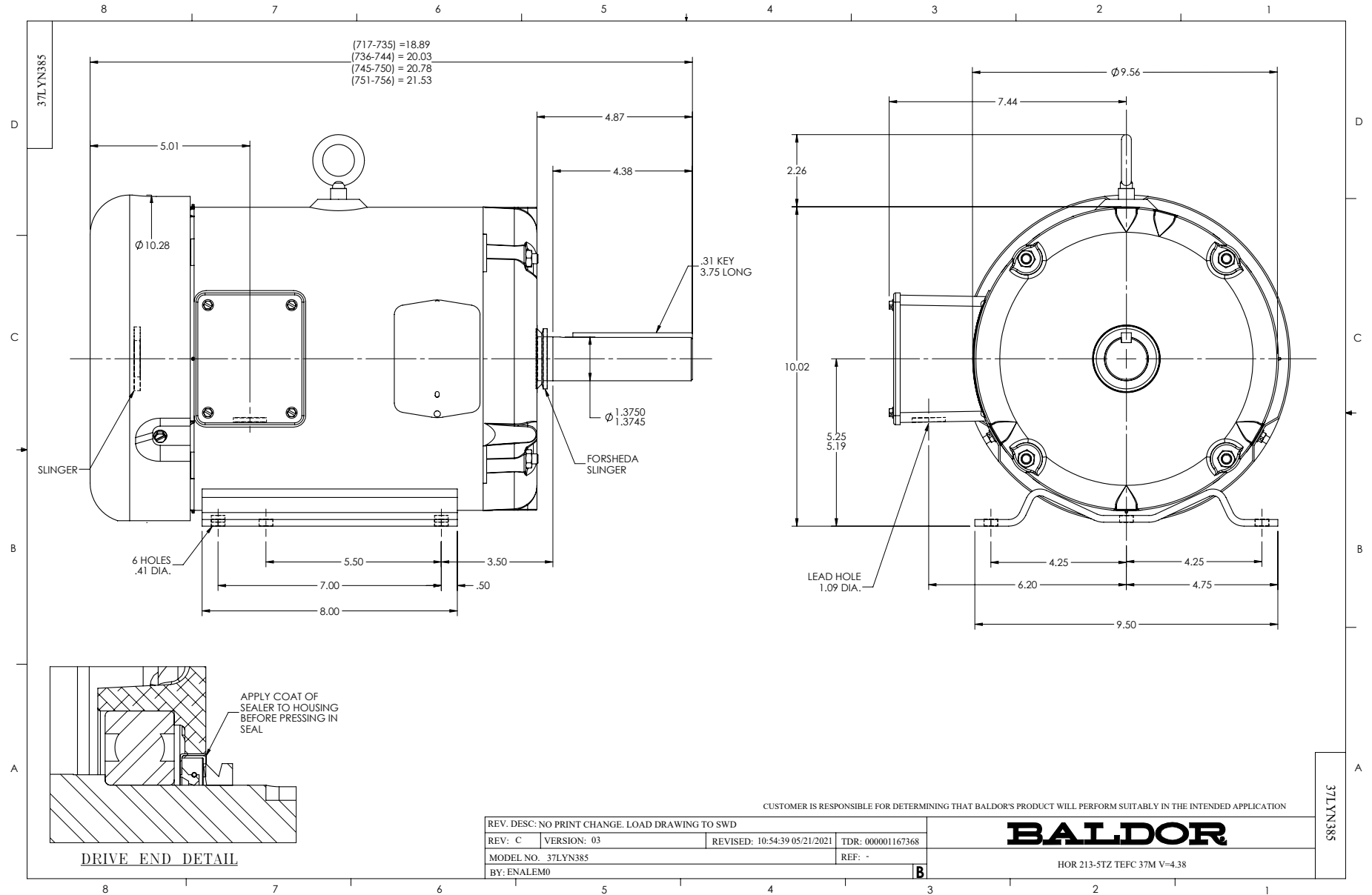
Record # 22653

Typical performance - not guaranteed values

Winding: 37WGS150-R001		Type: 3732M		Enclosure: TEFC	
Nameplate Data			460 V, 60 Hz: High Voltage Connection		
Rated Output (HP)	7.5	Full Load Torque	22.14 LB-FT		
Volts	208-230/460	Start Configuration	direct on line		
Full Load Amps	22-20.2/10.1	Breakdown Torque	78.19 LB-FT		
R.P.M.	1770	Pull-up Torque	34.99 LB-FT		
Hz	60 Phase	3	Locked-rotor Torque	48.08 LB-FT	
NEMA Design Code	A	KVA Code	K	Starting Current	78.69 A
Service Factor (S.F.)	1.15	No-load Current	5.26 A		
NEMA Nom. Eff.	89.5	Power Factor	77	Line-line Res. @ 25°C	1.39 Ω
Rating - Duty	40C AMB-CONT		Temp. Rise @ Rated Load	69°C	
S.F. Amps			Temp. Rise @ S.F. Load	81°C	
			Locked-rotor Power Factor	38.8	
			Rotor inertia	0.787 LB-FT ²	

Load Characteristics 460 V, 60 Hz, 7.5 HP

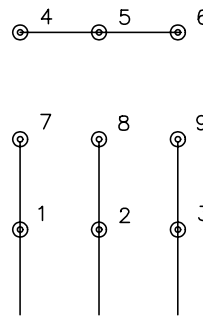
% of Rated Load	25	50	75	100	125	150	S.F.
Power Factor	38	58	71	77	81	83	79
Efficiency	81.5	88.2	89.6	90	88.8	88	89.4
Speed	1792	1786	1778	1771	1762	1752	1765
Line amperes	5.74	6.79	8.35	10.08	12.2	14.39	11.4



CD0005

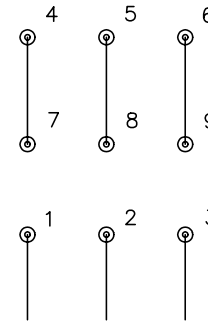


LOW VOLTAGE
(2Y)



LINE

HIGH VOLTAGE
(1Y)



LINE

NOTES:

1. INTERCHANGE ANY TWO LINE LEADS TO REVERSE ROTATION.
2. OPTIONAL THERMOSTATS ARE PROVIDED WHEN SPECIFIED.
3. ACTUAL NUMBER OF INTERNAL PARALLEL CIRCUITS MAY BE A MULTIPLE OF THOSE SHOWN ABOVE.
4. LEAD COLORS ARE OPTIONAL. LEADS MUST ALWAYS BE NUMBERED AS SHOWN.

REV. DESC: REVISE TO SHOW OPTIONAL COLORS			
REV. LTR: E	BY: JLP	REVISED: 01/19/99 10:15	TDR: 0171435
90000		FILE: AAA00005140	MDL: -
		MTL: -	

BALDOR ELECTRIC Co.

3PH, DV, 9 LEADS

CD0005