

BALDOR® • RELIANCE 

Product Information Packet

JML1409T

5HP,3500RPM,1PH,60HZ,184JM,3634LC,OPEN,F

Part Detail							
Revision:	B	Status:	PRD/A	Change #:		Proprietary:	No
Type:	AC	Elec. Spec:	36WGQ042	CD Diagram:	CD0017A02	Mfg Plant:	
Mech. Spec:	36M927	Layout:	36LYM927	Poles:	02	Created Date:	12-15-2020
Base:	RG	Eff. Date:	07-07-2021	Leads:	2#12 A PH,2#16 B PH		

Specs			
Catalog Number:	JML1409T	Inverter Code:	Not Inverter
Enclosure:	OPEN	KVA Code:	H
Frame:	184JM	Lifting Lugs:	No Lifting Lugs
Frame Material:	Steel	Locked Bearing Indicator:	Locked Bearing
Output @ Frequency:	5.000 HP @ 60 HZ	Motor Lead Quantity/Wire Size:	2 @ 12 AWG, A PH
Synchronous Speed @ Frequency:	3600 RPM @ 60 HZ	Motor Lead Exit:	Ko Box
Voltage @ Frequency:	230.0 V @ 60 HZ	Motor Lead Termination:	Flying Leads
XP Class and Group:	None	Motor Type:	3634LC
XP Division:	Not Applicable	Mounting Arrangement:	F1
Agency Approvals:	CSA	Power Factor:	96
	UR	Product Family:	General Purpose
Auxillary Box:	No Auxillary Box	Pulley End Bearing Type:	Ball
Auxillary Box Lead Termination:	None	Pulley Face Code:	C-Face
Base Indicator:	Rigid	Pulley Shaft Indicator:	Tapped & Key
Bearing Grease Type:	Polyrex EM (-20F +300F)	Rodent Screen:	Included
Blower:	None	Shaft Extension Location:	Pulley End
Current @ Voltage:	21.000 A @ 230.0 V	Shaft Ground Indicator:	No Shaft Grounding
	22.700 A @ 208.0 V	Shaft Rotation:	Reversible

Design Code:	L	Shaft Slinger Indicator:	Shaft Slinger
Drip Cover:	No Drip Cover	Speed Code:	Single Speed
Duty Rating:	CONT	Motor Standards:	NEMA
Electrically Isolated Bearing:	Not Electrically Isolated	Starting Method:	Direct on line
Feedback Device:	NO FEEDBACK	Thermal Device - Bearing:	None
Front Face Code:	Standard	Thermal Device - Winding:	None
Front Shaft Indicator:	None	Vibration Sensor Indicator:	No Vibration Sensor
Heater Indicator:	No Heater	Winding Thermal 1:	None
Insulation Class:	F	Winding Thermal 2:	None

Nameplate NP1256L										
CAT.NO.	JML1409T									
SPEC.	36M927Q042G1									
HP	5									
VOLTS	230									
AMP	21									
RPM	3500									
FRAME	184JM				HZ	60			PH	1
SER.F.	1.15		CODE	H	DES	L		CLASS	F	
NEMA-NOM-EFF	80		PF	96						
RATING	40C AMB-CONT									
CC								USABLE AT 208V	22.7	
DE	6207			ODE	6205					
ENCL	OPEN		SN							

AC Induction Motor Performance Data

Record # 85843

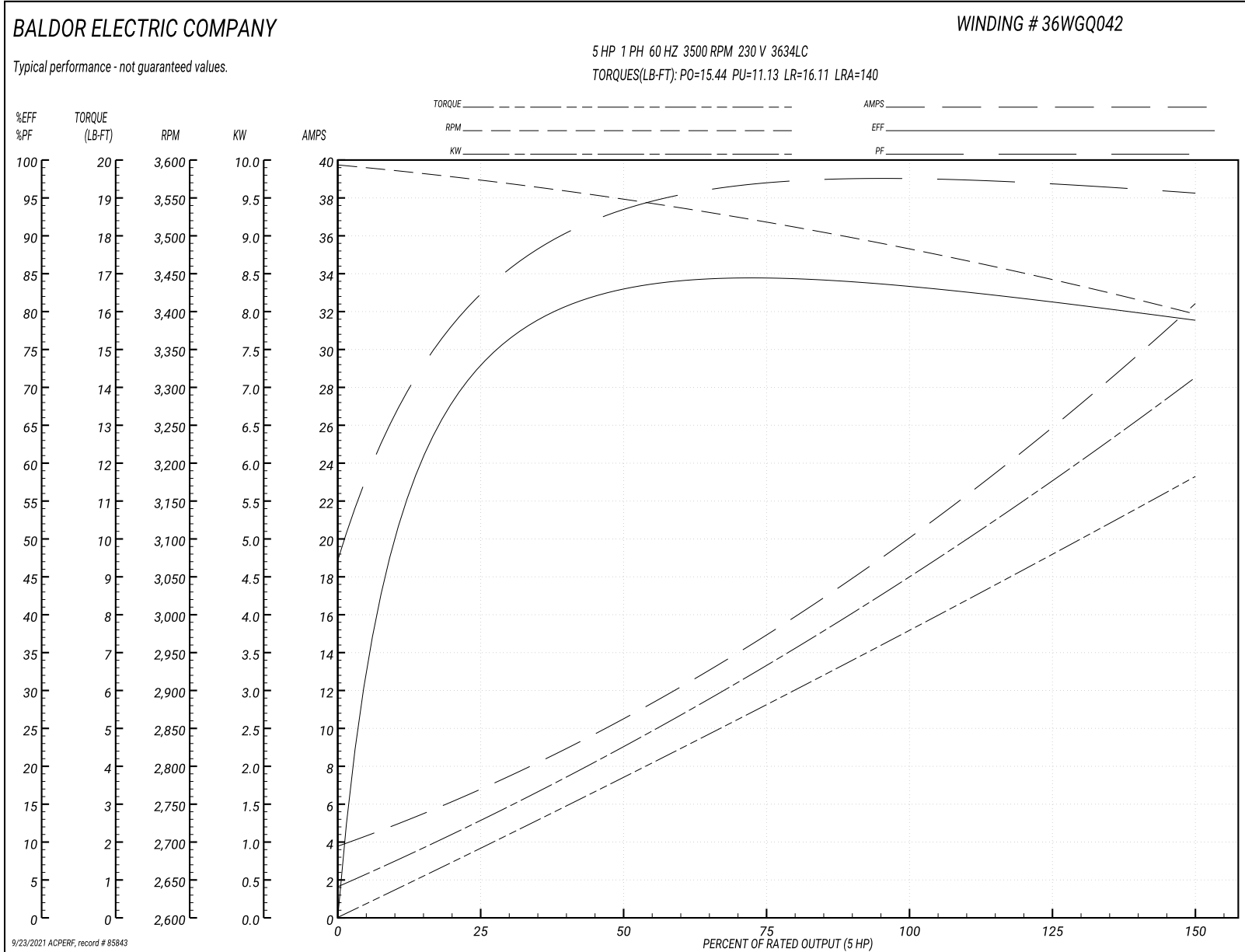
Typical performance - not guaranteed values

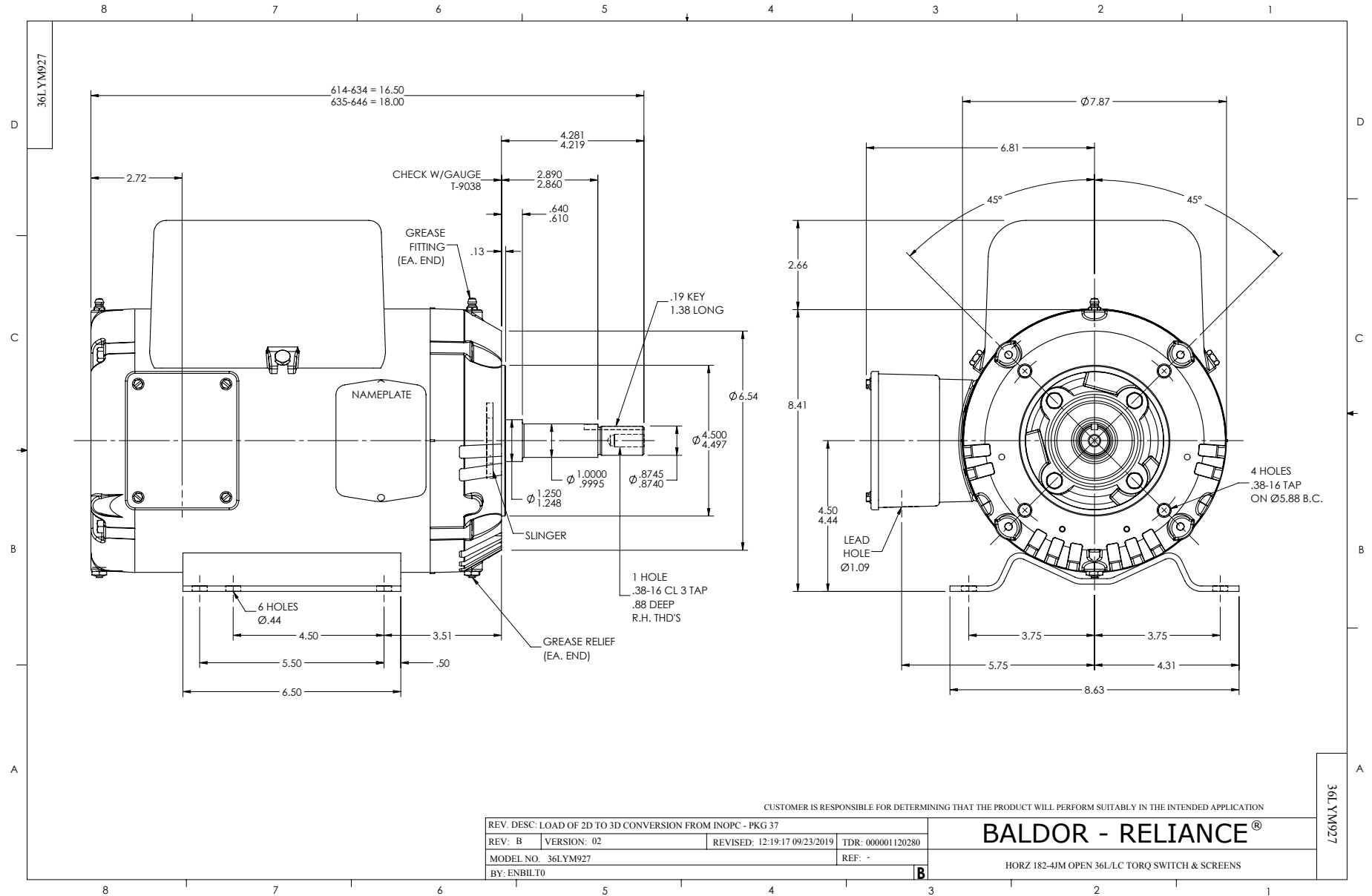
Winding: 36WGQ042-R001			Type: 3634LC		Enclosure: OPEN	
Nameplate Data				230 V, 60 Hz: Single Voltage Motor		
Rated Output (HP)		5	Full Load Torque		7.552 LB-FT	
Volts		230	Start Configuration		direct on line	
Full Load Amps		21	Breakdown Torque		15.44 LB-FT	
R.P.M.		3500	Pull-up Torque		11.13 LB-FT	
Hz	60 Phase	1	Locked-rotor Torque		16.11 LB-FT	
NEMA Design Code	L	KVA Code	H	Starting Current	140 A	
Service Factor (S.F.)		1.15	No-load Current		3.94 A	
NEMA Nom. Eff.	80	Power Factor	96	Line-line Res. @ 25°C	0.38164 Ω A Ph 1.649 Ω B Ph	
Rating - Duty		40C	AMB-CONT	Temp. Rise @ Rated Load	62°C	
S.F. Amps				Temp. Rise @ S.F. Load	78°C	
				Rotor inertia	0.153 lb-ft ²	

Load Characteristics 230 V, 60 Hz, 5 HP

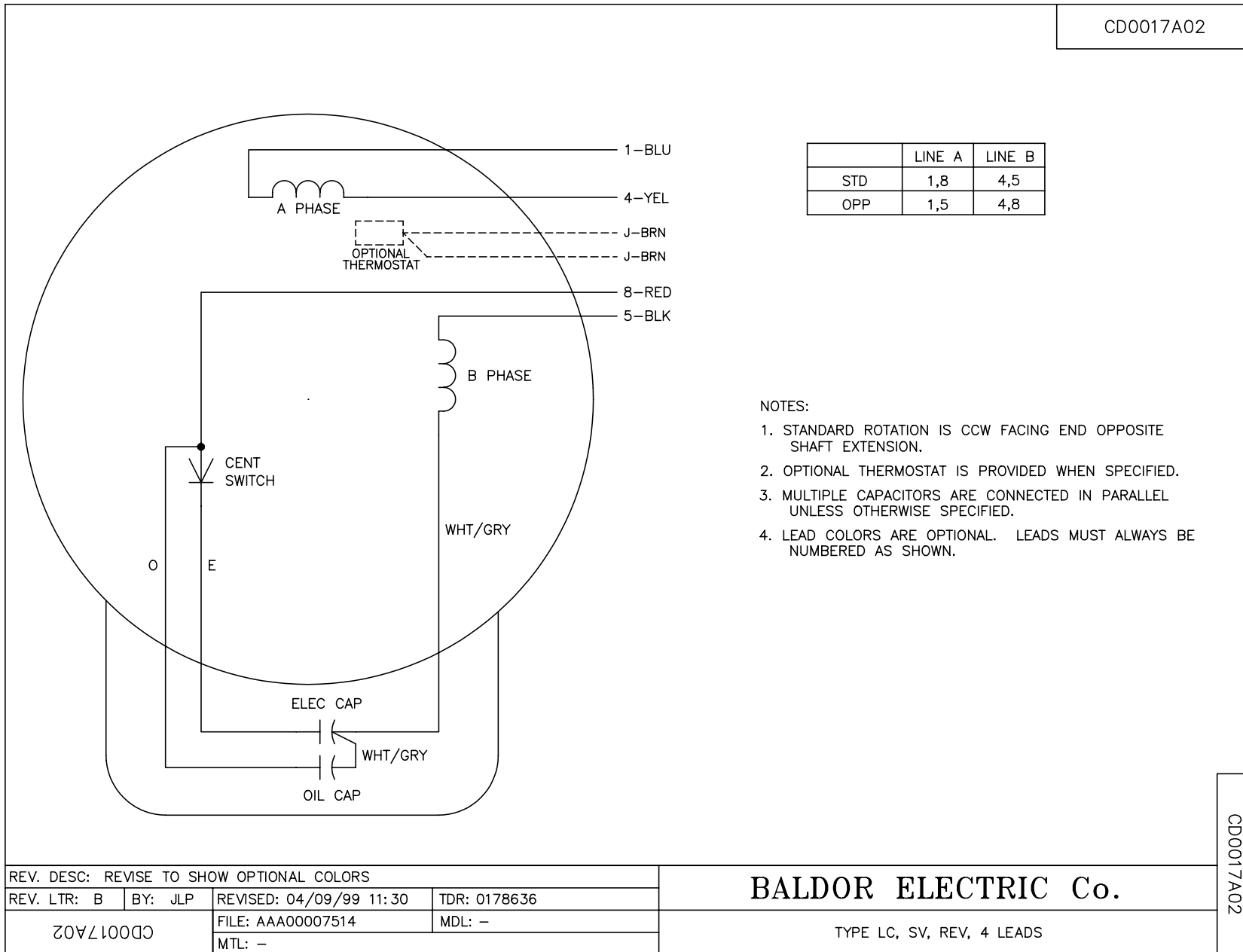
% of Rated Load	25	50	75	100	125	150	S.F.
Power Factor	87	94	96	97	97	96	97
Efficiency	72.4	82.2	84.2	83.7	81.7	78.6	82.5
Speed	3572	3547	3518	3485	3445	3395	3461
Line amperes	6.53	10.47	15.01	20.06	25.69	32.41	23.4

Performance Graph at 230V, 60Hz, 5.0HP Typical performance - Not guaranteed values





CD0017A02



REV. DESC: REVISE TO SHOW OPTIONAL COLORS			
REV. LTR: B	BY: JLP	REVISED: 04/09/99 11:30	TDR: 0178636
CD0017A02		FILE: AAA00007514	MDL: -
		MTL: -	

BALDOR ELECTRIC Co.

TYPE LC, SV, REV, 4 LEADS

CD0017A02