

BALDOR® • RELIANCE 

Product Information Packet

JML1509T

7.5HP,3450RPM,1PH,60HZ,213JM,3729L,OPEN

Part Detail							
Revision:	AX	Status:	PRD/A	Change #:		Proprietary:	No
Type:	AC	Elec. Spec:	37WG077	CD Diagram:	CD0017A01	Mfg Plant:	
Mech. Spec:	37R088	Layout:	37LYR088	Poles:	02	Created Date:	
Base:	RG	Eff. Date:	05-12-2021	Leads:	2#8 A PH,2#14 B PH		

Specs			
Catalog Number:	JML1509T	Inverter Code:	Not Inverter
Enclosure:	OPEN	KVA Code:	G
Frame:	213JM	Lifting Lugs:	No Lifting Lugs
Frame Material:	Steel	Locked Bearing Indicator:	Locked Bearing
Output @ Frequency:	7.500 HP @ 60 HZ	Motor Lead Quantity/Wire Size:	2 @ 8 AWG, A PH
Synchronous Speed @ Frequency:	3600 RPM @ 60 HZ	Motor Lead Exit:	Ko Box
Voltage @ Frequency:	230.0 V @ 60 HZ	Motor Lead Termination:	Flying Leads
XP Class and Group:	None	Motor Type:	3729L
XP Division:	Not Applicable	Mounting Arrangement:	F1
Agency Approvals:	UR	Power Factor:	82
	CSA	Product Family:	General Purpose
Auxillary Box:	No Auxillary Box	Pulley End Bearing Type:	Ball
Auxillary Box Lead Termination:	None	Pulley Face Code:	C-Face
Base Indicator:	Rigid	Pulley Shaft Indicator:	Tapped & Key
Bearing Grease Type:	Polyrex EM (-20F +300F)	Rodent Screen:	Included
Blower:	None	Shaft Extension Location:	Pulley End
Current @ Voltage:	37.000 A @ 230.0 V	Shaft Ground Indicator:	No Shaft Grounding
Design Code:	L	Shaft Rotation:	Reversible

Drip Cover:	No Drip Cover	Shaft Slinger Indicator:	Shaft Slinger
Duty Rating:	CONT	Speed Code:	Single Speed
Electrically Isolated Bearing:	Not Electrically Isolated	Motor Standards:	NEMA
Feedback Device:	NO FEEDBACK	Starting Method:	Direct on line
Front Face Code:	Standard	Thermal Device - Bearing:	None
Front Shaft Indicator:	None	Thermal Device - Winding:	None
Heater Indicator:	No Heater	Vibration Sensor Indicator:	No Vibration Sensor
Insulation Class:	F	Winding Thermal 1:	None
		Winding Thermal 2:	None

Nameplate NP1256L										
CAT.NO.	JML1509T									
SPEC.	37R88X77									
HP	7.5									
VOLTS	230									
AMP	37									
RPM	3450									
FRAME	213JM				HZ	60			PH	1
SER.F.	1.15		CODE	G	DES	L		CLASS	F	
NEMA-NOM-EFF	81		PF	82						
RATING	40C AMB-CONT									
CC									USABLE AT 208V	
DE	6309				ODE	6206				
ENCL	OPEN		SN							

AC Induction Motor Performance Data

Record # 61303

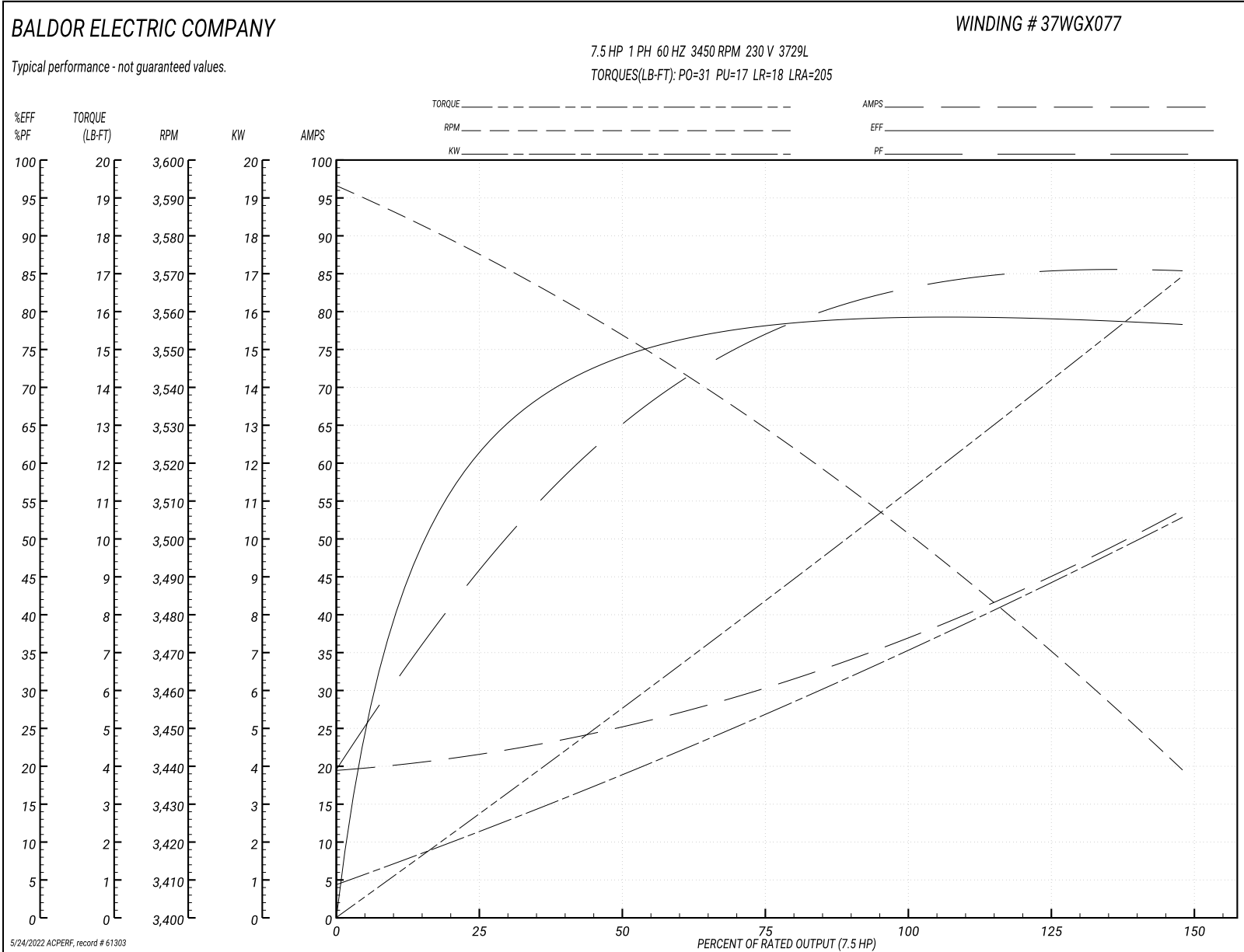
Typical performance - not guaranteed values

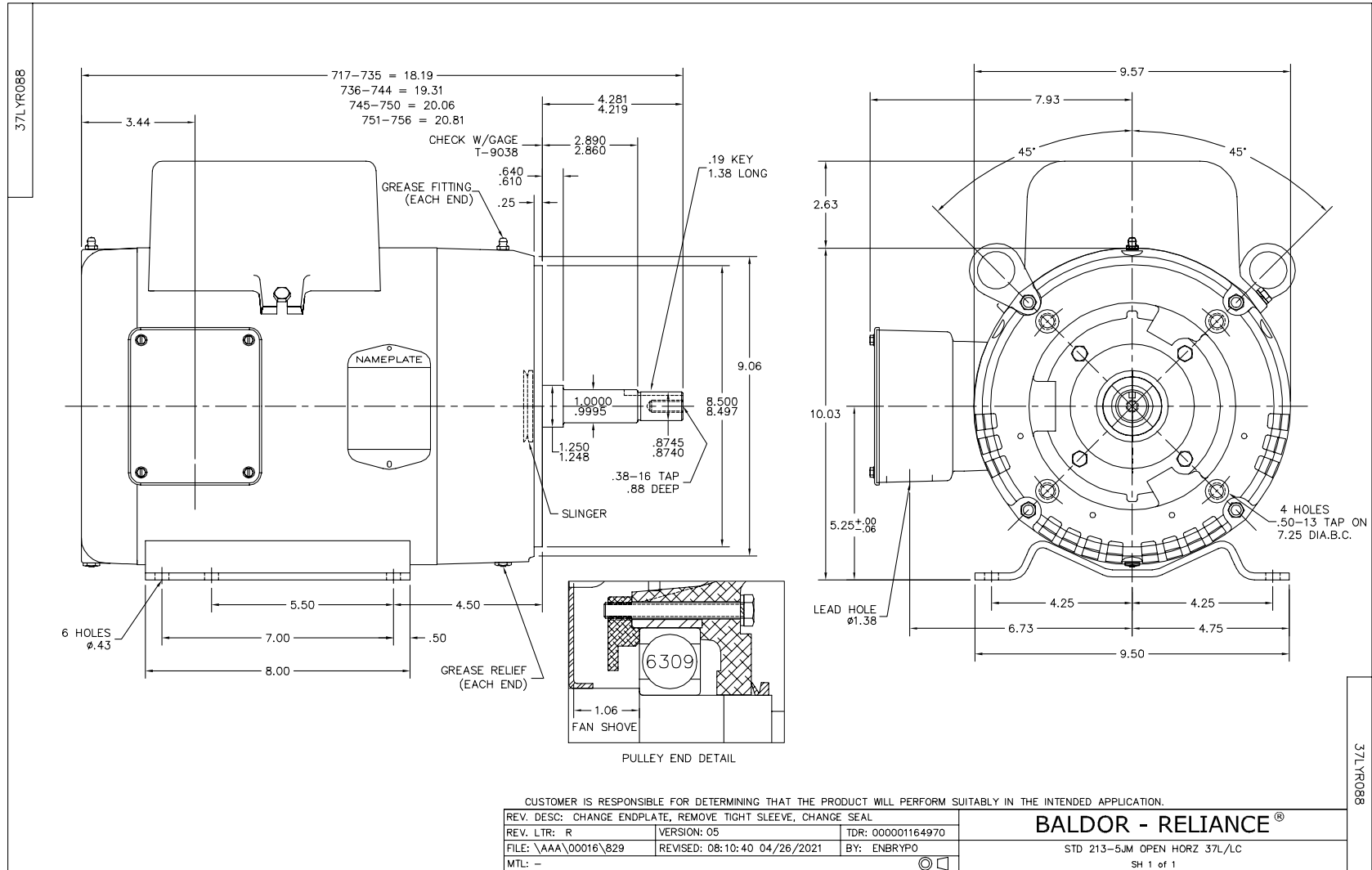
Winding: 37WGX077-R004		Type: 3729L	Enclosure: OPEN
Nameplate Data		230 V, 60 Hz: Single Voltage Motor	
Rated Output (HP)	7.5	Full Load Torque	11.3 LB-FT
Volts	230	Start Configuration	direct on line
Full Load Amps	37	Breakdown Torque	31 LB-FT
R.P.M.	3450	Pull-up Torque	17 LB-FT
Hz	60 Phase	Locked-rotor Torque	18 LB-FT
NEMA Design Code	L KVA Code	Starting Current	205 A
Service Factor (S.F.)	1.15	No-load Current	19.5 A
NEMA Nom. Eff.	81 Power Factor	Line-line Res. @ 25°C	0.23 Ω A Ph 0.799 Ω B Ph
Rating - Duty	40C AMB-CONT	Temp. Rise @ Rated Load	58°C
S.F. Amps		Temp. Rise @ S.F. Load	73°C

Load Characteristics 230 V, 60 Hz, 7.5 HP

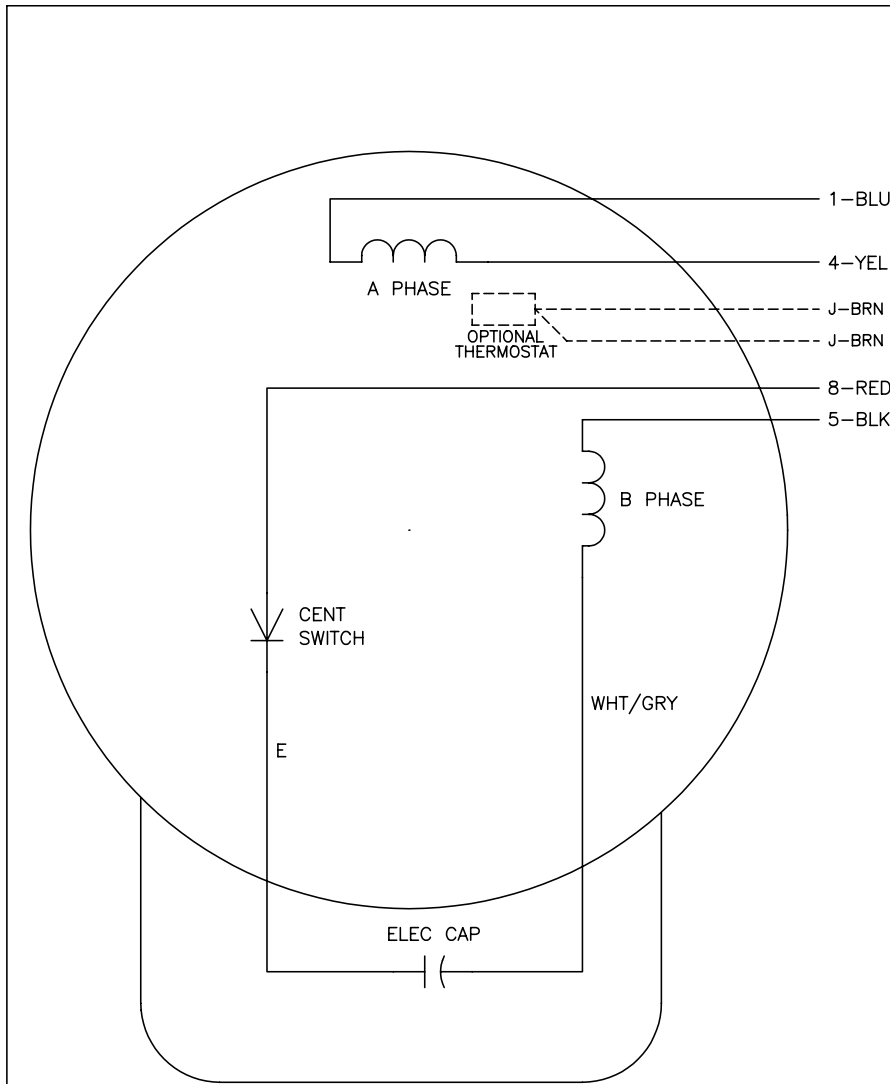
% of Rated Load	25	50	75	100	125	150	S.F.
Power Factor	46	65	76	82	85	87	84
Efficiency	61.3	73.9	78.2	79.5	79.3	78.1	79.4
Speed	3574	3552	3528	3502	3472	3438	3484
Line amperes	21.6	25.5	30.1	37.4	45	53.7	42

Performance Graph at 230V, 60Hz, 7.5HP Typical performance - Not guaranteed values





CDO017A01



	LINE A	LINE B
STD	1,8	4,5
OPP	1,5	4,8

NOTES:

1. STANDARD ROTATION IS CCW FACING END OPPOSITE SHAFT EXTENSION.
2. OPTIONAL THERMOSTAT IS PROVIDED WHEN SPECIFIED.
3. MULTIPLE CAPACITORS ARE CONNECTED IN PARALLEL UNLESS OTHERWISE SPECIFIED.
4. LEAD COLORS ARE OPTIONAL. LEADS MUST ALWAYS BE NUMBERED AS SHOWN.

REV. DESC: REVISE TO SHOW OPTIONAL COLORS			
REV. LTR: B	BY: JLP	REVISED: 04/08/99 1:18	TDR: 0178636
CDO017A01		FILE: AAA00007513	MDL: -
		MTL: -	

BALDOR ELECTRIC Co.

TYPE L, SV, REV, 4 LEADS

CDO017A01