

BALDOR® • RELIANCE 

Product Information Packet

JMM2506T

7.5HP, 1150RPM, 3PH, 60HZ, 254JM, 3756M, OPSB

Part Detail							
Revision:	K	Status:	INA/A	Change #:		Proprietary:	No
Type:	AC	Elec. Spec:	37WGT972	CD Diagram:	CD0005	Mfg Plant:	
Mech. Spec:	37G107	Layout:	37LYG107	Poles:	06	Created Date:	07-25-2012
Base:	RG	Eff. Date:	03-08-2016	Leads:	9#14		

Specs			
Catalog Number:	JMM2506T	Insulation Class:	F
Enclosure:	ODP	Inverter Code:	Not Inverter
Frame:	254JM	KVA Code:	K
Frame Material:	Steel	Lifting Lugs:	Standard Lifting Lugs
Output @ Frequency:	7.500 HP @ 60 HZ	Locked Bearing Indicator:	Locked Bearing
Synchronous Speed @ Frequency:	1200 RPM @ 60 HZ	Motor Lead Quantity/Wire Size:	9 @ 14 AWG
Voltage @ Frequency:	460.0 V @ 60 HZ	Motor Lead Exit:	Ko Box
	230.0 V @ 60 HZ	Motor Lead Termination:	Flying Leads
	208.0 V @ 60 HZ	Motor Type:	3756M
XP Division:	Not Applicable	Mounting Arrangement:	F1
Agency Approvals:	CSA	Power Factor:	70
	UR	Product Family:	General Purpose
Auxillary Box:	No Auxillary Box	Pulley End Bearing Type:	Ball
Auxillary Box Lead Termination:	None	Pulley Face Code:	C-Face
Base Indicator:	RG	Pulley Shaft Indicator:	Tapped & Key
Bearing Grease Type:	Polyrex EM (-20F +300F)	Rodent Screen:	Included
Blower:	None	Shaft Extension Location:	Pulley End
Current @ Voltage:	11.200 A @ 460.0 V	Shaft Ground Indicator:	No Shaft Grounding

	22.400 A @ 230.0 V	Shaft Rotation:	Reversible
	22.900 A @ 208.0 V	Shaft Slinger Indicator:	Shaft Slinger
Design Code:	A	Speed Code:	Single Speed
Drip Cover:	No Drip Cover	Motor Standards:	NEMA
Duty Rating:	CONT	Starting Method:	Direct on line
Electrically Isolated Bearing:	Not Electrically Isolated	Thermal Device - Bearing:	None
Feedback Device:	NO FEEDBACK	Thermal Device - Winding:	None
Front Face Code:	Standard	Vibration Sensor Indicator:	No Vibration Sensor
Front Shaft Indicator:	None	Winding Thermal 1:	None
Heater Indicator:	No Heater	Winding Thermal 2:	None

Nameplate NP1256L										
CAT.NO.	JMM2506T									
SPEC.	37G107T972H1									
HP	7.5									
VOLTS	208-230/460									
AMP	22.9-22.4/11.2									
RPM	1160									
FRAME	254JM				HZ	60			PH	3
SER.F.	1.15		CODE	K	DES	A		CLASS	F	
NEMA-NOM-EFF	88.5		PF	70						
RATING	40C AMB-CONT									
CC	010A				USABLE AT 208V					
DE	6309				ODE	6206				
ENCL	OPSB		SN							

AC Induction Motor Performance Data

Record # 40470

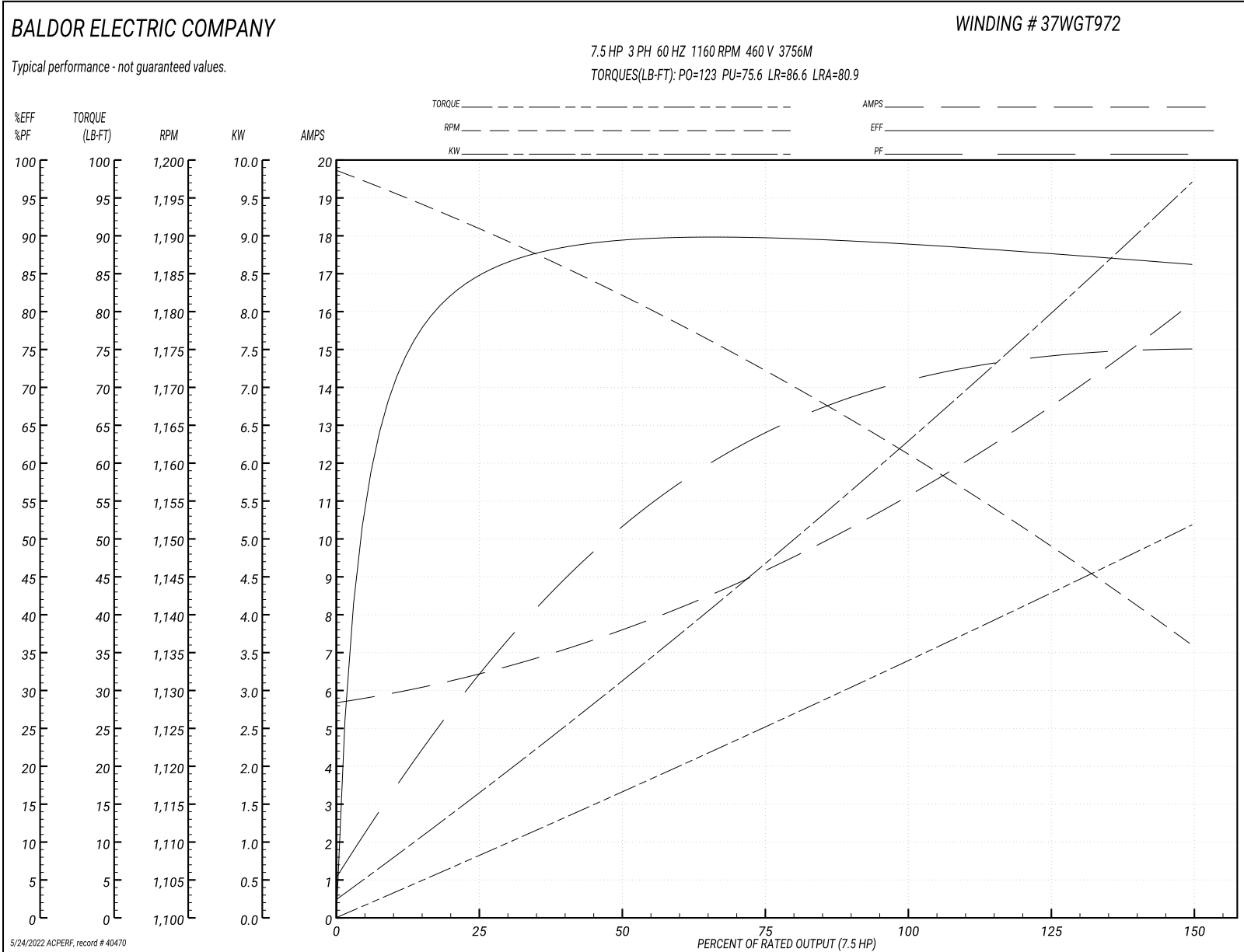
Typical performance - not guaranteed values

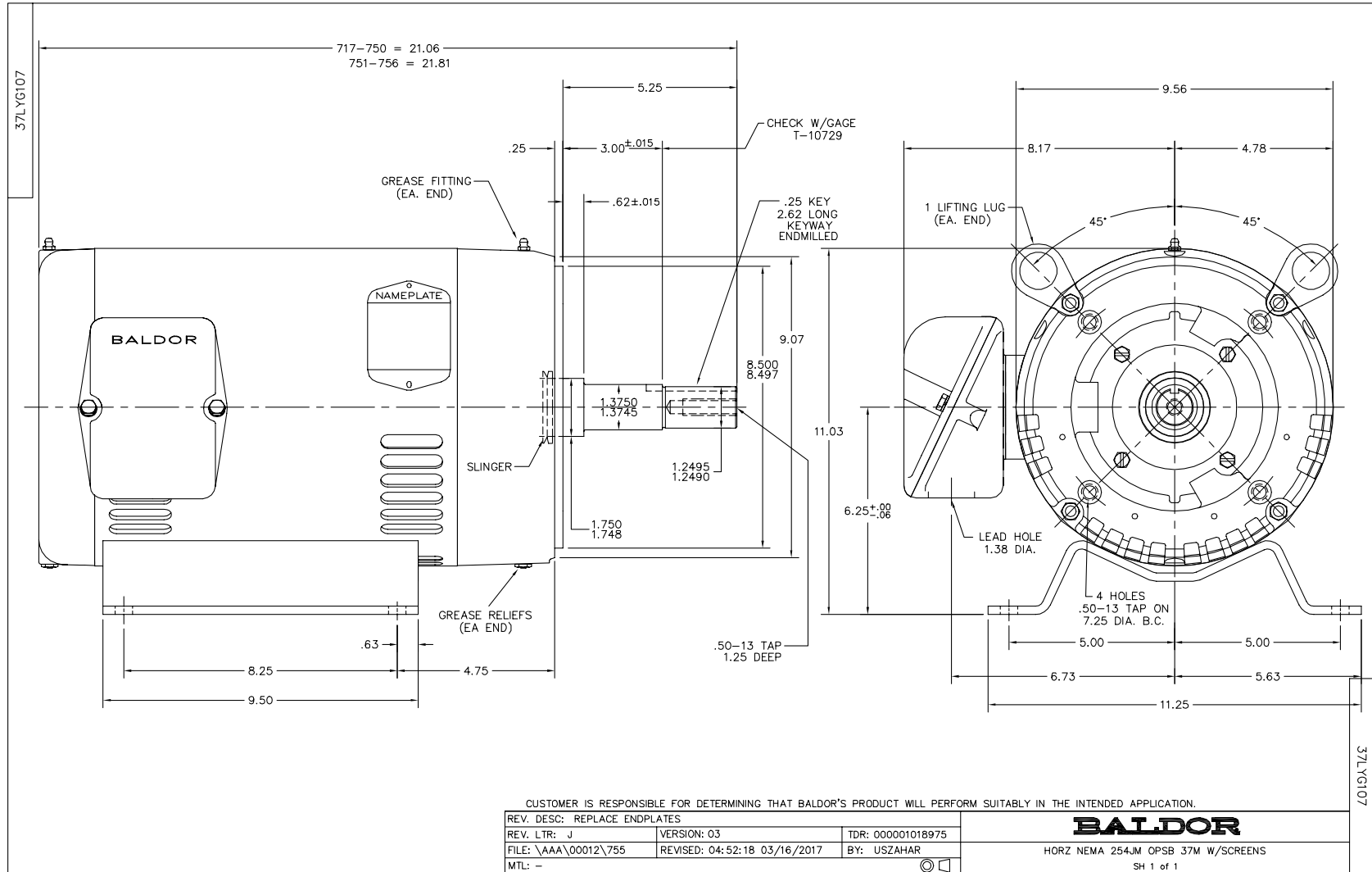
Winding: 37WGT972-R001		Type: 3756M		Enclosure: OPSB	
Nameplate Data			460 V, 60 Hz: High Voltage Connection		
Rated Output (HP)	7.5	Full Load Torque	33.6 LB-FT		
Volts	208-230/460	Start Configuration	direct on line		
Full Load Amps	22.9-22.4/11.2	Breakdown Torque	123 LB-FT		
R.P.M.	1160	Pull-up Torque	75.6 LB-FT		
Hz	60 Phase	3	Locked-rotor Torque	86.6 LB-FT	
NEMA Design Code	A	KVA Code	K	Starting Current	80.9 A
Service Factor (S.F.)	1.15	No-load Current	5.82 A		
NEMA Nom. Eff.	88.5	Power Factor	70	Line-line Res. @ 25°C	1.1503 Ω
Rating - Duty	40C AMB-CONT		Temp. Rise @ Rated Load	48°C	
S.F. Amps			Temp. Rise @ S.F. Load	60°C	
			Locked-rotor Power Factor	22	
			Rotor inertia	1.39 LB-FT ²	

Load Characteristics 460 V, 60 Hz, 7.5 HP

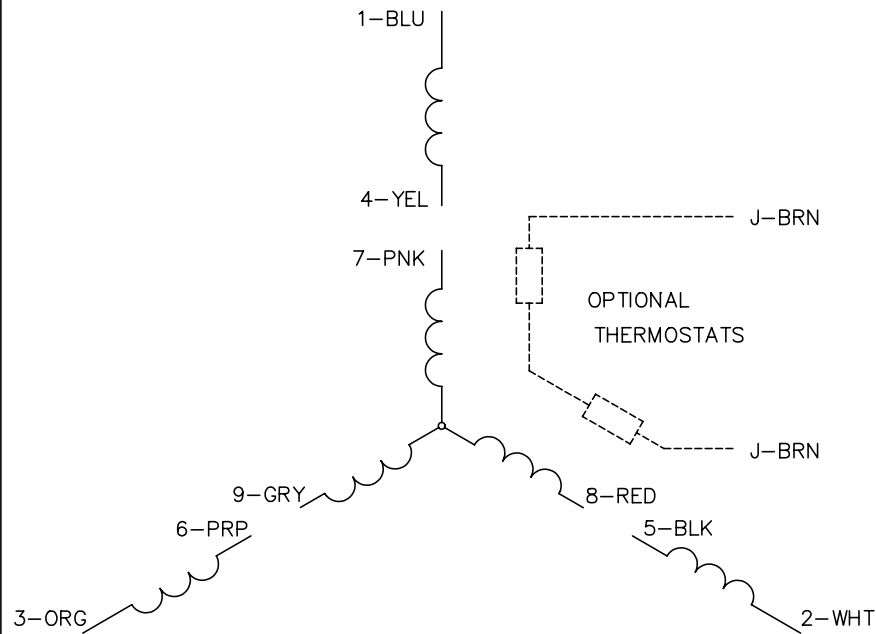
% of Rated Load	25	50	75	100	125	150	S.F.
Power Factor	33	52	64	70	73	76	72
Efficiency	84.3	89.2	89.8	89.1	87.8	86.1	88.3
Speed	1190.8	1182	1172.3	1161.8	1149.7	1135.6	1155
Line amperes	6.28	7.45	9.14	11.2	13.6	16.1	12.6

Performance Graph at 460V, 60Hz, 7.5HP Typical performance - Not guaranteed values





CD0005



LOW VOLTAGE
(2Y)



LINE

HIGH VOLTAGE
(1Y)



LINE

NOTES:

1. INTERCHANGE ANY TWO LINE LEADS TO REVERSE ROTATION.
2. OPTIONAL THERMOSTATS ARE PROVIDED WHEN SPECIFIED.
3. ACTUAL NUMBER OF INTERNAL PARALLEL CIRCUITS MAY BE A MULTIPLE OF THOSE SHOWN ABOVE.
4. LEAD COLORS ARE OPTIONAL. LEADS MUST ALWAYS BE NUMBERED AS SHOWN.

REV. DESC: REVISE TO SHOW OPTIONAL COLORS			
REV. LTR: E	BY: JLP	REVISED: 01/19/99 10:15	TDR: 0171435
900000		FILE: AAA00005140	MDL: -
		MTL: -	

BALDOR ELECTRIC Co.

3PH, DV, 9 LEADS

CD0005