

**BALDOR® • RELIANCE** 

**Product Information Packet**

**JMM2513T**

**15HP,1760RPM,3PH,60HZ,254JM,3748M,OPSB**

Part Detail							
Revision:	N	Status:	INA/A	Change #:		Proprietary:	No
Type:	AC	Elec. Spec:	37WGT867	CD Diagram:	CD0005	Mfg Plant:	
Mech. Spec:	37G107	Layout:	37LYG107	Poles:	04	Created Date:	06-14-2005
Base:	RG	Eff. Date:	03-08-2016	Leads:	9#12		

Specs			
Catalog Number:	JMM2513T	Heater Indicator:	No Heater
Enclosure:	ODP	Insulation Class:	F
Frame:	254JM	Inverter Code:	Not Inverter
Frame Material:	Steel	KVA Code:	J
Output @ Frequency:	15.000 HP @ 60 HZ	Lifting Lugs:	Standard Lifting Lugs
Synchronous Speed @ Frequency:	1800 RPM @ 60 HZ	Locked Bearing Indicator:	Locked Bearing
Voltage @ Frequency:	208.0 V @ 60 HZ	Motor Lead Quantity/Wire Size:	9 @ 14 AWG
	230.0 V @ 60 HZ	Motor Lead Exit:	Ko Box
	460.0 V @ 60 HZ	Motor Lead Termination:	Flying Leads
XP Class and Group:	None	Motor Type:	3748M
XP Division:	Not Applicable	Mounting Arrangement:	F1
Agency Approvals:	UR	Power Factor:	81
	CSA	Product Family:	General Purpose
Auxillary Box:	No Auxillary Box	Pulley End Bearing Type:	Ball
Auxillary Box Lead Termination:	None	Pulley Face Code:	C-Face
Base Indicator:	RG	Pulley Shaft Indicator:	Tapped & Key
Bearing Grease Type:	Polyrex EM (-20F +300F)	Rodent Screen:	Included
Blower:	None	Shaft Extension Location:	Pulley End

<b>Current @ Voltage:</b>	19.000 A @ 460.0 V	<b>Shaft Ground Indicator:</b>	No Shaft Grounding
	38.000 A @ 230.0 V	<b>Shaft Rotation:</b>	Reversible
	41.000 A @ 208.0 V	<b>Shaft Slinger Indicator:</b>	Shaft Slinger
<b>Design Code:</b>	A	<b>Speed Code:</b>	Single Speed
<b>Drip Cover:</b>	No Drip Cover	<b>Motor Standards:</b>	NEMA
<b>Duty Rating:</b>	CONT	<b>Starting Method:</b>	Direct on line
<b>Electrically Isolated Bearing:</b>	Not Electrically Isolated	<b>Thermal Device - Bearing:</b>	None
<b>Feedback Device:</b>	NO FEEDBACK	<b>Thermal Device - Winding:</b>	None
<b>Front Face Code:</b>	Standard	<b>Vibration Sensor Indicator:</b>	No Vibration Sensor
<b>Front Shaft Indicator:</b>	None	<b>Winding Thermal 1:</b>	None
		<b>Winding Thermal 2:</b>	None

Nameplate NP1256L										
CAT.NO.	JMM2513T									
SPEC.	37G107T867G1									
HP	15									
VOLTS	208-230/460									
AMP	41-38/19									
RPM	1760									
FRAME	254JM				HZ	60			PH	3
SER.F.	1.15		CODE	J	DES	A		CLASS	F	
NEMA-NOM-EFF	91		PF	81						
RATING	40C AMB-CONT									
CC	010A				USABLE AT 208V					
DE	6309				ODE	6206				
ENCL	OPSB		SN							

**AC Induction Motor Performance Data**

Record # 16633

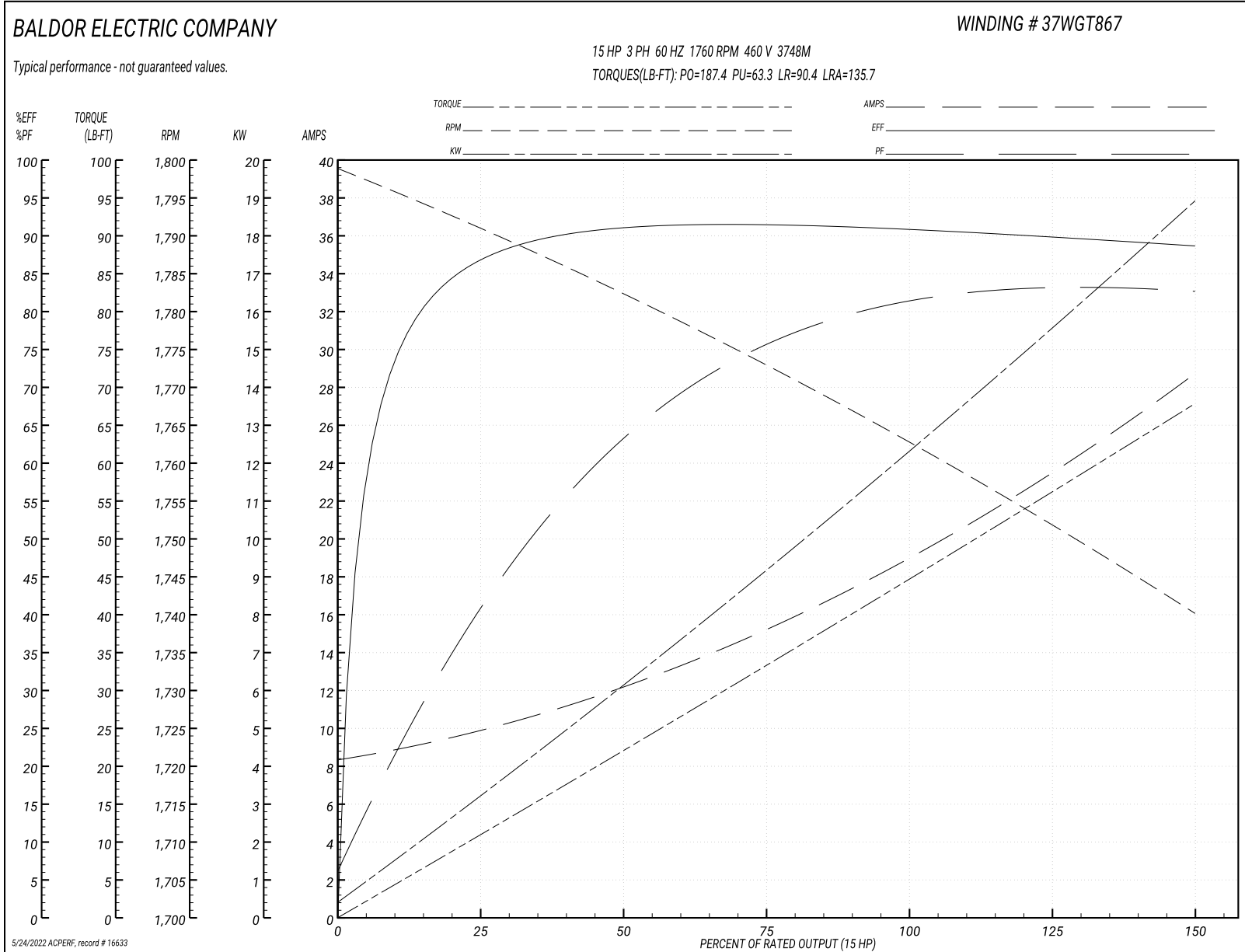
Typical performance - not guaranteed values

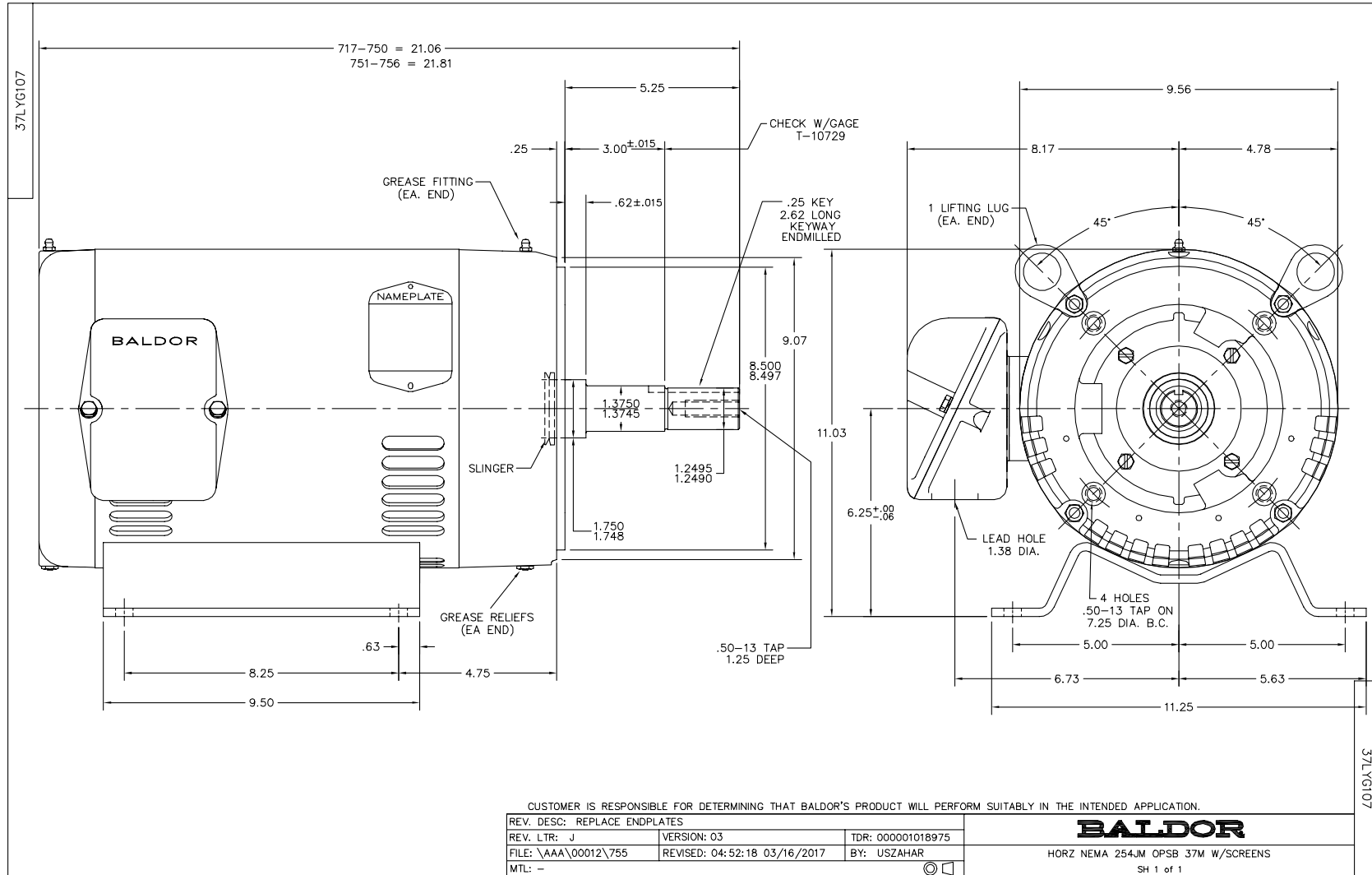
<b>Winding: 37WGT867-R002</b>		<b>Type: 3748M</b>		<b>Enclosure: OPSB</b>	
<b>Nameplate Data</b>			<b>460 V, 60 Hz: High Voltage Connection</b>		
<b>Rated Output (HP)</b>	15	<b>Full Load Torque</b>	44.67 LB-FT		
<b>Volts</b>	208-230/460	<b>Start Configuration</b>	direct on line		
<b>Full Load Amps</b>	41-38/19	<b>Breakdown Torque</b>	187.4 LB-FT		
<b>R.P.M.</b>	1760	<b>Pull-up Torque</b>	63.3 LB-FT		
<b>Hz</b>	60 <b>Phase</b>	3	<b>Locked-rotor Torque</b>	90.4 LB-FT	
<b>NEMA Design Code</b>	A <b>KVA Code</b>	J	<b>Starting Current</b>	135.7 A	
<b>Service Factor (S.F.)</b>	1.15	<b>No-load Current</b>	8.45 A		
<b>NEMA Nom. Eff.</b>	91 <b>Power Factor</b>	81	<b>Line-line Res. @ 25°C</b>	0.695 Ω	
<b>Rating - Duty</b>	40C AMB-CONT	<b>Temp. Rise @ Rated Load</b>	54°C		
<b>S.F. Amps</b>		<b>Temp. Rise @ S.F. Load</b>	64°C		
		<b>Locked-rotor Power Factor</b>	36		
		<b>Rotor inertia</b>	1.18 LB-FT <sup>2</sup>		

**Load Characteristics 460 V, 60 Hz, 15 HP**

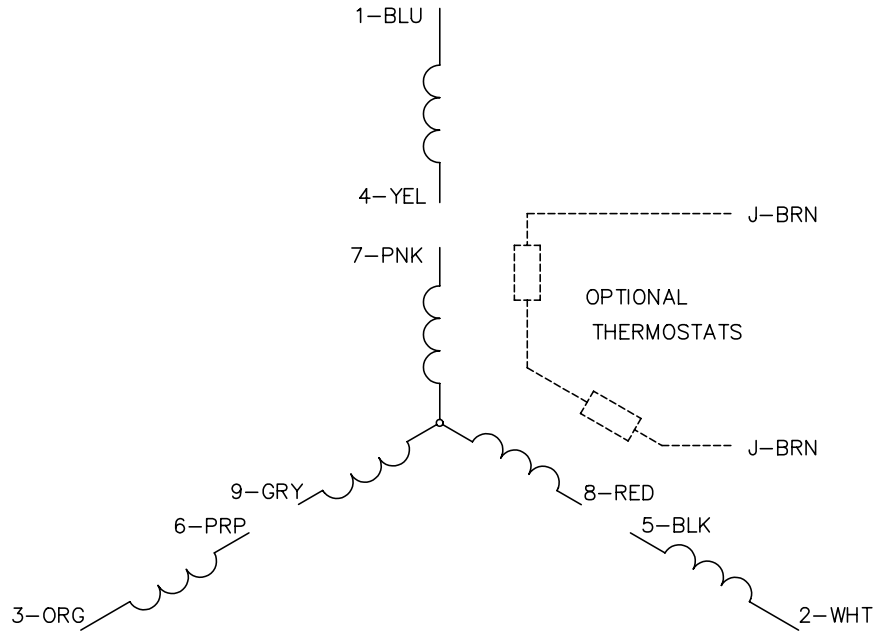
<b>% of Rated Load</b>	<b>25</b>	<b>50</b>	<b>75</b>	<b>100</b>	<b>125</b>	<b>150</b>	<b>S.F.</b>
<b>Power Factor</b>	42	64	75	81	83	83	82
<b>Efficiency</b>	86.4	90.8	91.5	91	90	88.6	90.4
<b>Speed</b>	1791	1782	1773	1763	1752	1740	1756
<b>Line amperes</b>	9.73	12.12	15.3	19	23.57	28.66	21.7

Performance Graph at 460V, 60Hz, 15.0HP Typical performance - Not guaranteed values

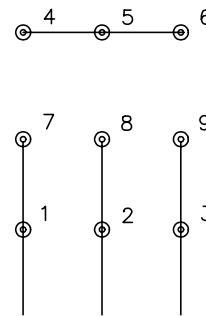




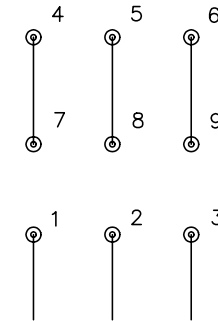
CD0005



LOW VOLTAGE  
(2Y)



HIGH VOLTAGE  
(1Y)



NOTES:

1. INTERCHANGE ANY TWO LINE LEADS TO REVERSE ROTATION.
2. OPTIONAL THERMOSTATS ARE PROVIDED WHEN SPECIFIED.
3. ACTUAL NUMBER OF INTERNAL PARALLEL CIRCUITS MAY BE A MULTIPLE OF THOSE SHOWN ABOVE.
4. LEAD COLORS ARE OPTIONAL. LEADS MUST ALWAYS BE NUMBERED AS SHOWN.

REV. DESC: REVISE TO SHOW OPTIONAL COLORS			
REV. LTR: E	BY: JLP	REVISED: 01/19/99 10:15	TDR: 0171435
90000		FILE: AAA00005140	MDL: -
		MTL: -	

**BALDOR ELECTRIC Co.**

3PH, DV, 9 LEADS

CD0005