

BALDOR® • RELIANCE 

Product Information Packet

JMM2514T

20HP,3525RPM,3PH,60HZ,254JM,3930M,OPSB

Part Detail							
Revision:	M	Status:	INA/A	Change #:		Proprietary:	No
Type:	AC	Elec. Spec:	39WGW669	CD Diagram:	CD0180	Mfg Plant:	
Mech. Spec:	39K62	Layout:	39LYK062	Poles:	02	Created Date:	
Base:	RG	Eff. Date:	03-08-2016	Leads:	9#12		

Specs			
Catalog Number:	JMM2514T	Insulation Class:	B
Enclosure:	OPSB	Inverter Code:	Not Inverter
Frame:	254JM	KVA Code:	H
Output @ Frequency:	20.000 HP @ 60 HZ	Lifting Lugs:	Standard Lifting Lugs
Synchronous Speed @ Frequency:	3600 RPM @ 60 HZ	Locked Bearing Indicator:	Locked Bearing
Voltage @ Frequency:	230.0 V @ 60 HZ	Motor Lead Quantity/Wire Size:	9 @ 12 AWG
	460.0 V @ 60 HZ	Motor Lead Exit:	Ko Box
XP Division:	Not Applicable	Motor Lead Termination:	Flying Leads
Agency Approvals:	CSA	Motor Type:	3930M
	UR	Mounting Arrangement:	F1
Auxillary Box:	No Auxillary Box	Power Factor:	85
Auxillary Box Lead Termination:	None	Product Family:	General Purpose
Base Indicator:	Rigid	Pulley End Bearing Type:	Ball
Bearing Grease Type:	Polyrex EM (-20F +300F)	Pulley Face Code:	C-Face
Blower:	None	Pulley Shaft Indicator:	Tapped & Key
Current @ Voltage:	24.000 A @ 460.0 V	Rodent Screen:	Included
	48.000 A @ 230.0 V	Shaft Extension Location:	Pulley End
	52.000 A @ 208.0 V	Shaft Ground Indicator:	No Shaft Grounding

Design Code:	A	Shaft Rotation:	Reversible
Drip Cover:	No Drip Cover	Shaft Slinger Indicator:	Shaft Slinger
Duty Rating:	CONT	Speed Code:	Single Speed
Electrically Isolated Bearing:	Not Electrically Isolated	Motor Standards:	NEMA
Feedback Device:	NO FEEDBACK	Starting Method:	Direct on line
Front Face Code:	Standard	Thermal Device - Bearing:	None
Front Shaft Indicator:	None	Thermal Device - Winding:	None
Heater Indicator:	No Heater	Vibration Sensor Indicator:	No Vibration Sensor

Nameplate NP1256L										
CAT.NO.	JMM2514T									
SPEC.	39K062W669									
HP	20									
VOLTS	230/460									
AMP	48/24									
RPM	3525									
FRAME	254JM				HZ	60			PH	3
SER.F.	1.15		CODE	H	DES	A		CLASS	B	
NEMA-NOM-EFF	90.2		PF	85						
RATING	40C AMB-CONT									
CC	010A				USABLE AT 208V			52		
DE	6309				ODE	6208				
ENCL	OPSB		SN							

AC Induction Motor Performance Data

Record # 46637

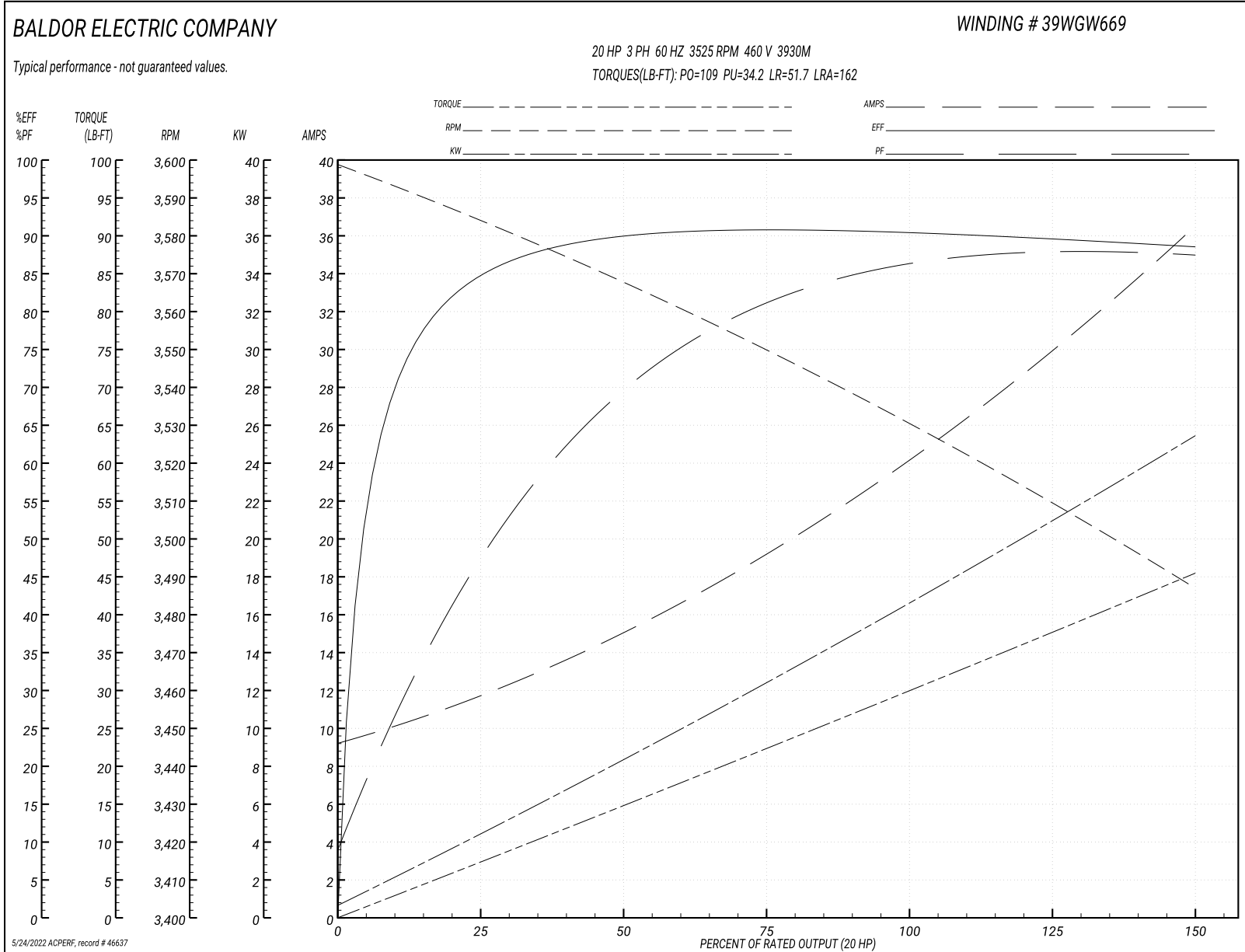
Typical performance - not guaranteed values

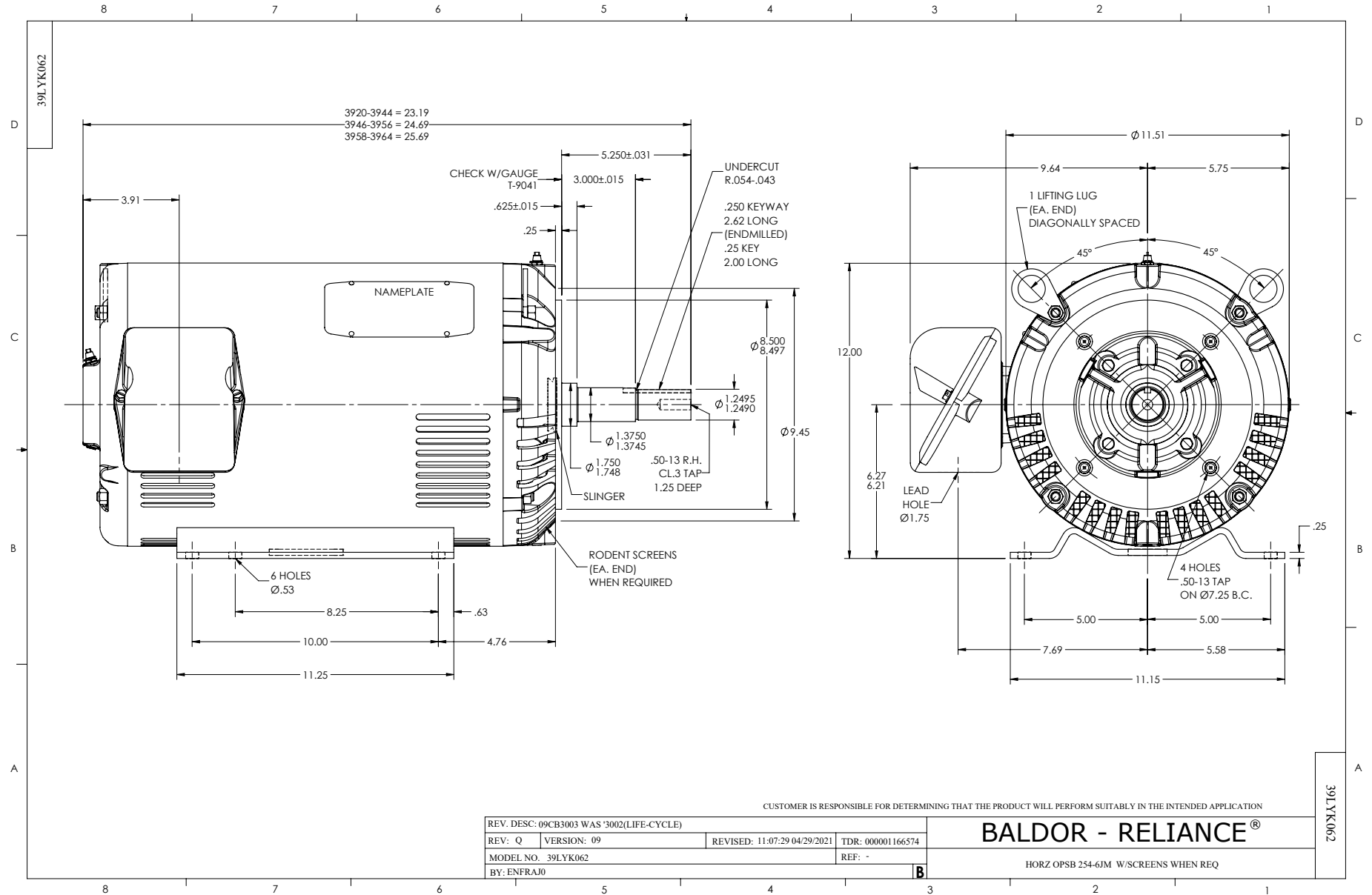
Winding: 39WGW669-R005		Type: 3930M		Enclosure: OPSB	
Nameplate Data			460 V, 60 Hz: High Voltage Connection		
Rated Output (HP)	20	Full Load Torque	29.9 LB-FT		
Volts	230/460	Start Configuration	direct on line		
Full Load Amps	48/24	Breakdown Torque	109 LB-FT		
R.P.M.	3525	Pull-up Torque	34.2 LB-FT		
Hz	60 Phase	3	Locked-rotor Torque	51.7 LB-FT	
NEMA Design Code	A KVA Code	H	Starting Current	162 A	
Service Factor (S.F.)	1.15	No-load Current	9.55 A		
NEMA Nom. Eff.	90.2 Power Factor	85	Line-line Res. @ 25°C	0.55159 Ω	
Rating - Duty	40C AMB-CONT	Temp. Rise @ Rated Load	33°C		
S.F. Amps		Temp. Rise @ S.F. Load	40°C		
		Locked-rotor Power Factor	31		
		Rotor inertia	0.766 LB-FT ²		

Load Characteristics 460 V, 60 Hz, 20 HP

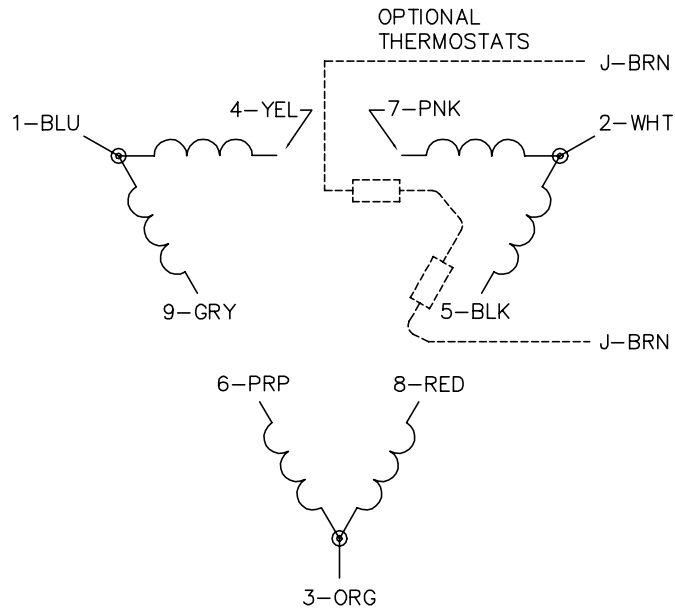
% of Rated Load	25	50	75	100	125	150	S.F.
Power Factor	50	71	81	85	87	88	86
Efficiency	84.4	89.7	90.7	90.5	89.7	88.5	90
Speed	3583.6	3567.3	3550.2	3530.2	3509.1	3487.1	3518
Line amperes	11.3	15	19.3	24.4	30.2	36.3	27.9

Performance Graph at 460V, 60Hz, 20.0HP Typical performance - Not guaranteed values

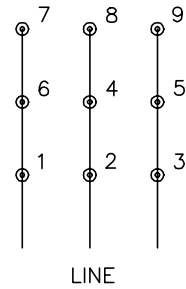




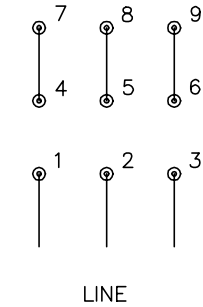
CD0180



LOW VOLTAGE
(2D)



HIGH VOLTAGE
(1D)



NOTES:

1. INTERCHANGE ANY TWO LINE LEADS TO REVERSE ROTATION.
2. OPTIONAL THERMOSTATS ARE PROVIDED WHEN SPECIFIED.
3. ACTUAL NUMBER OF INTERNAL PARALLEL CIRCUITS MAY BE A MULTIPLE OF THOSE SHOWN ABOVE.
4. LEAD COLORS ARE OPTIONAL. LEADS MUST ALWAYS BE NUMBERED AS SHOWN.

CD0180

REV. DESC: ADD CLASS CONN00000007		
REV. LTR: D	VERSION: 01	TDR: 000001099922
FILE: \AAA\00005\148	REVISED: 10:25:29 02/19/2019	BY: ENBRIRO
MTL: -	© □	

BALDOR - RELIANCE®

3PH, DV, 9 LEADS, DELTA CONNECTION

SH 1 of 1