

**BALDOR® • RELIANCE** 

**Product Information Packet**

**JMM3309T**

**5HP, 1160RPM, 3PH, 60HZ, 215JM, 3734M, OPSB, F1**

Part Detail							
Revision:	R	Status:	INA/A	Change #:		Proprietary:	No
Type:	AC	Elec. Spec:	37WGT974	CD Diagram:	CD0005	Mfg Plant:	
Mech. Spec:	37F696	Layout:	37LYF696	Poles:	06	Created Date:	04-05-2007
Base:	RG	Eff. Date:	03-08-2016	Leads:	9#14		

Specs			
Catalog Number:	JMM3309T	Insulation Class:	B
Enclosure:	ODP	Inverter Code:	Not Inverter
Frame:	215JM	KVA Code:	J
Frame Material:	Steel	Lifting Lugs:	Standard Lifting Lugs
Output @ Frequency:	5.000 HP @ 60 HZ	Locked Bearing Indicator:	Locked Bearing
Synchronous Speed @ Frequency:	1200 RPM @ 60 HZ	Motor Lead Quantity/Wire Size:	9 @ 14 AWG
Voltage @ Frequency:	460.0 V @ 60 HZ	Motor Lead Exit:	Ko Box
	230.0 V @ 60 HZ	Motor Lead Termination:	Flying Leads
	208.0 V @ 60 HZ	Motor Type:	3734M
XP Division:	Not Applicable	Mounting Arrangement:	F1
Agency Approvals:	CSA	Power Factor:	70
	UR	Product Family:	General Purpose
Auxillary Box:	No Auxillary Box	Pulley End Bearing Type:	Ball
Auxillary Box Lead Termination:	None	Pulley Face Code:	C-Face
Base Indicator:	RG	Pulley Shaft Indicator:	Tapped & Key
Bearing Grease Type:	Polyrex EM (-20F +300F)	Rodent Screen:	Included
Blower:	None	Shaft Extension Location:	Pulley End
Current @ Voltage:	15.200 A @ 230.0 V	Shaft Ground Indicator:	No Shaft Grounding

	16.500 A @ 208.0 V	<b>Shaft Rotation:</b>	Reversible
	7.600 A @ 460.0 V	<b>Shaft Slinger Indicator:</b>	Shaft Slinger
<b>Design Code:</b>	A	<b>Speed Code:</b>	Single Speed
<b>Drip Cover:</b>	No Drip Cover	<b>Motor Standards:</b>	NEMA
<b>Duty Rating:</b>	CONT	<b>Starting Method:</b>	Direct on line
<b>Electrically Isolated Bearing:</b>	Not Electrically Isolated	<b>Thermal Device - Bearing:</b>	None
<b>Feedback Device:</b>	NO FEEDBACK	<b>Thermal Device - Winding:</b>	None
<b>Front Face Code:</b>	Standard	<b>Vibration Sensor Indicator:</b>	No Vibration Sensor
<b>Front Shaft Indicator:</b>	None	<b>Winding Thermal 1:</b>	None
<b>Heater Indicator:</b>	No Heater	<b>Winding Thermal 2:</b>	None

Nameplate NP1256L										
CAT.NO.	JMM3309T									
SPEC.	37F696T974H1									
HP	5									
VOLTS	208-230/460									
AMP	16.5-15.2/7.6									
RPM	1160									
FRAME	215JM				HZ	60			PH	3
SER.F.	1.15		CODE	J	DES	A		CLASS	B	
NEMA-NOM-EFF	87.5		PF	70						
RATING	40C AMB-CONT									
CC	010A				USABLE AT 208V					
DE	6309				ODE	6206				
ENCL	OPSB		SN							

**AC Induction Motor Performance Data**

Record # 23178

Typical performance - not guaranteed values

<b>Winding: 37WGT974-R001</b>		<b>Type: 3734M</b>		<b>Enclosure: OPSB</b>	
<b>Nameplate Data</b>			<b>460 V, 60 Hz: High Voltage Connection</b>		
<b>Rated Output (HP)</b>	5	<b>Full Load Torque</b>	22.6 LB-FT		
<b>Volts</b>	208-230/460	<b>Start Configuration</b>	direct on line		
<b>Full Load Amps</b>	16.5-15.2/7.6	<b>Breakdown Torque</b>	72.5 LB-FT		
<b>R.P.M.</b>	1160	<b>Pull-up Torque</b>	45.4 LB-FT		
<b>Hz</b>	60 <b>Phase</b>	3	<b>Locked-rotor Torque</b>	50.8 LB-FT	
<b>NEMA Design Code</b>	A	<b>KVA Code</b>	J	<b>Starting Current</b>	49.9 A
<b>Service Factor (S.F.)</b>	1.15		<b>No-load Current</b>	4.11 A	
<b>NEMA Nom. Eff.</b>	87.5	<b>Power Factor</b>	70	<b>Line-line Res. @ 25°C</b>	1.94 Ω
<b>Rating - Duty</b>	40C AMB-CONT		<b>Temp. Rise @ Rated Load</b>	37°C	
<b>S.F. Amps</b>			<b>Temp. Rise @ S.F. Load</b>	47°C	
			<b>Locked-rotor Power Factor</b>	24	
			<b>Rotor inertia</b>	0.846 LB-FT <sup>2</sup>	

**Load Characteristics 460 V, 60 Hz, 5 HP**

<b>% of Rated Load</b>	<b>25</b>	<b>50</b>	<b>75</b>	<b>100</b>	<b>125</b>	<b>150</b>	<b>S.F.</b>
<b>Power Factor</b>	33	52	63	70	73	75	72
<b>Efficiency</b>	82.1	87.7	88.7	88.3	87	85.4	87.5
<b>Speed</b>	1192	1184	1174	1164	1152	1138	1157
<b>Line amperes</b>	4.4	5.18	6.32	7.65	9.22	10.8	8.59

Performance Graph at 460V, 60Hz, 5.0HP Typical performance - Not guaranteed values

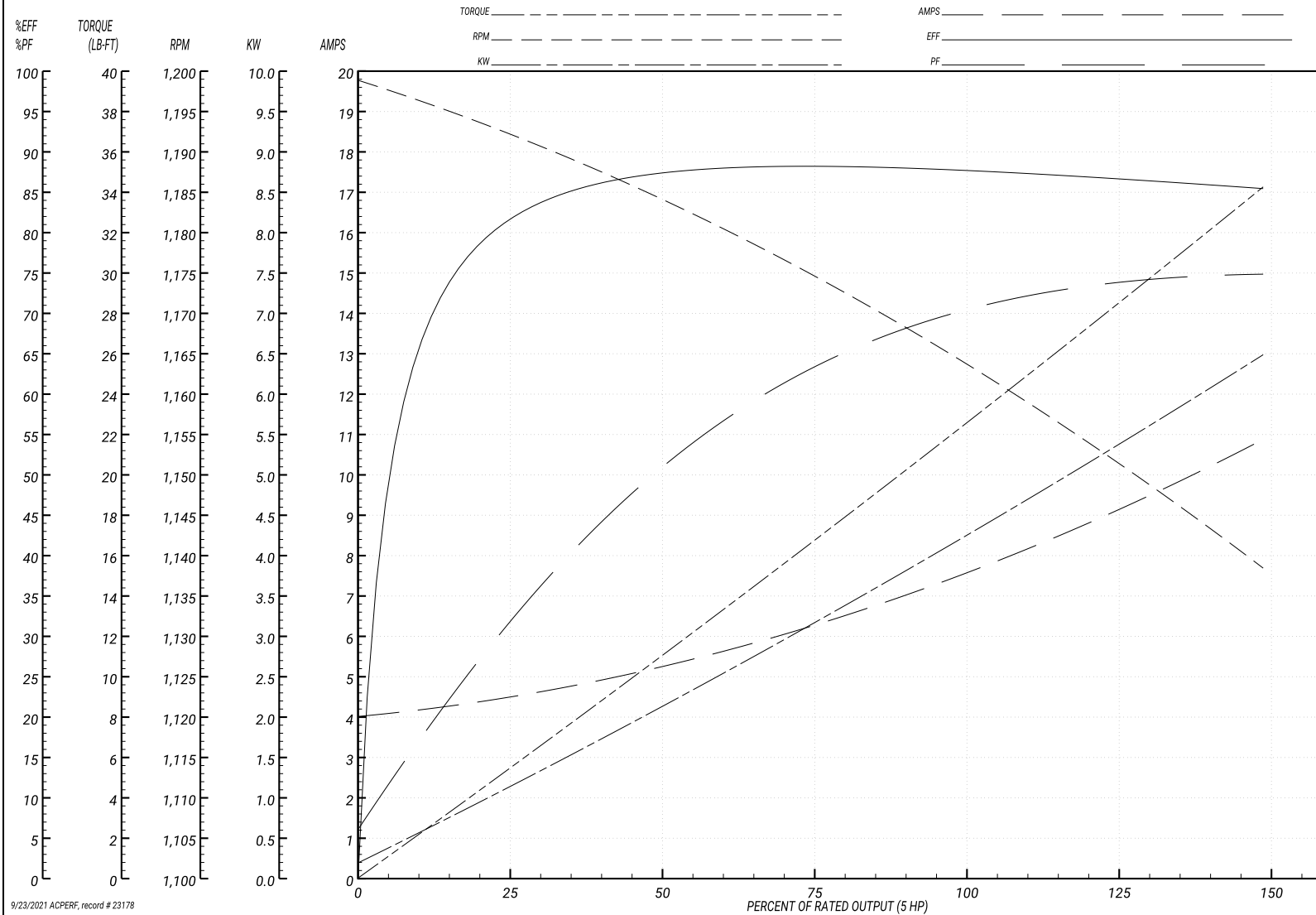
**BALDOR ELECTRIC COMPANY**

WINDING # 37WGT974

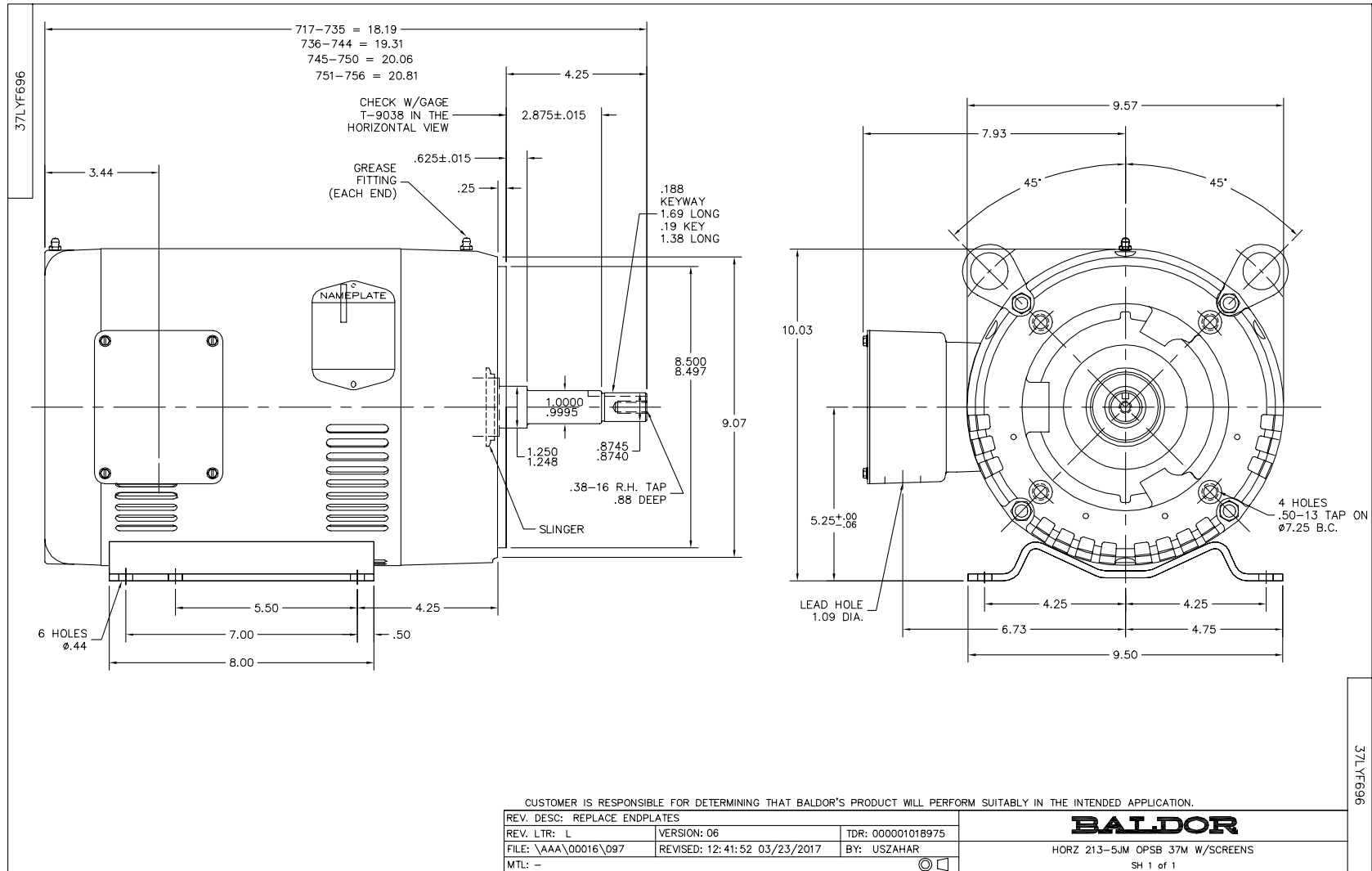
Typical performance - not guaranteed values.

5 HP 3 PH 60 HZ 1160 RPM 460 V 3734M

TORQUES(LB-FT): PO=72.5 PU=45.4 LR=50.8 LRA=49.9



9/23/2021 ACPERF, record # 23178



CD0005

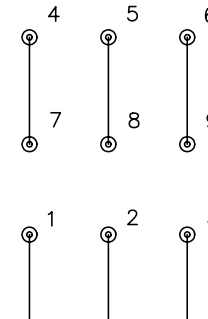


LOW VOLTAGE  
(2Y)



LINE

HIGH VOLTAGE  
(1Y)



LINE

NOTES:

1. INTERCHANGE ANY TWO LINE LEADS TO REVERSE ROTATION.
2. OPTIONAL THERMOSTATS ARE PROVIDED WHEN SPECIFIED.
3. ACTUAL NUMBER OF INTERNAL PARALLEL CIRCUITS MAY BE A MULTIPLE OF THOSE SHOWN ABOVE.
4. LEAD COLORS ARE OPTIONAL. LEADS MUST ALWAYS BE NUMBERED AS SHOWN.

REV. DESC: REVISE TO SHOW OPTIONAL COLORS			
REV. LTR: E	BY: JLP	REVISED: 01/19/99 10:15	TDR: 0171435
9000D		FILE: AAA00005140	MDL: -
		MTL: -	

**BALDOR ELECTRIC Co.**

3PH, DV, 9 LEADS

CD0005