

BALDOR® • RELIANCE 

Product Information Packet

JPM2538T

40HP,3500RPM,3PH,60HZ,286JP,3946M,OPSB

Part Detail							
Revision:	W	Status:	INA/A	Change #:		Proprietary:	No
Type:	AC	Elec. Spec:	39WGW857	CD Diagram:	CD0180	Mfg Plant:	
Mech. Spec:	39P023	Layout:	39LYP023	Poles:	02	Created Date:	
Base:	RG	Eff. Date:	03-08-2016	Leads:	9#8		

Specs			
Catalog Number:	JPM2538T	Insulation Class:	B
Enclosure:	ODP	Inverter Code:	Not Inverter
Frame:	286JP	KVA Code:	G
Output @ Frequency:	40.000 HP @ 60 HZ	Lifting Lugs:	Standard Lifting Lugs
Synchronous Speed @ Frequency:	3600 RPM @ 60 HZ	Locked Bearing Indicator:	Locked Bearing
Voltage @ Frequency:	230.0 V @ 60 HZ	Motor Lead Quantity/Wire Size:	9 @ 8 AWG
	460.0 V @ 60 HZ	Motor Lead Exit:	Ko Box
XP Division:	Not Applicable	Motor Lead Termination:	Flying Leads
Agency Approvals:	CSA	Motor Type:	3946M
	UR	Mounting Arrangement:	F1
Auxillary Box:	No Auxillary Box	Power Factor:	91
Auxillary Box Lead Termination:	None	Product Family:	General Purpose
Base Indicator:	RG	Pulley End Bearing Type:	Ball
Bearing Grease Type:	Polyrex EM (-20F +300F)	Pulley Face Code:	C-Face
Blower:	None	Pulley Shaft Indicator:	Tapped & Key
Current @ Voltage:	45.000 A @ 460.0 V	Rodent Screen:	Included
	90.000 A @ 230.0 V	Shaft Extension Location:	Pulley End
	99.200 A @ 208.0 V	Shaft Ground Indicator:	No Shaft Grounding

Design Code:	B	Shaft Rotation:	Reversible
Drip Cover:	No Drip Cover	Shaft Slinger Indicator:	No Slinger
Duty Rating:	CONT	Speed Code:	Single Speed
Electrically Isolated Bearing:	Not Electrically Isolated	Motor Standards:	NEMA
Feedback Device:	NO FEEDBACK	Starting Method:	Direct on line
Front Face Code:	Standard	Thermal Device - Bearing:	None
Front Shaft Indicator:	None	Thermal Device - Winding:	None
Heater Indicator:	No Heater	Vibration Sensor Indicator:	No Vibration Sensor

Nameplate NP1256L										
CAT.NO.	JPM2538T									
SPEC.	39P023W857H1									
HP	40									
VOLTS	230/460									
AMP	90/45									
RPM	3500									
FRAME	286JP				HZ	60			PH	3
SER.F.	1.15		CODE	G	DES	B		CLASS	B	
NEMA-NOM-EFF	91.7		PF	91						
RATING	40C AMB-CONT									
CC	010A				USABLE AT 208V			99.2		
DE	6312				ODE	6208				
ENCL	OPSB		SN							

AC Induction Motor Performance Data

Record # 12968

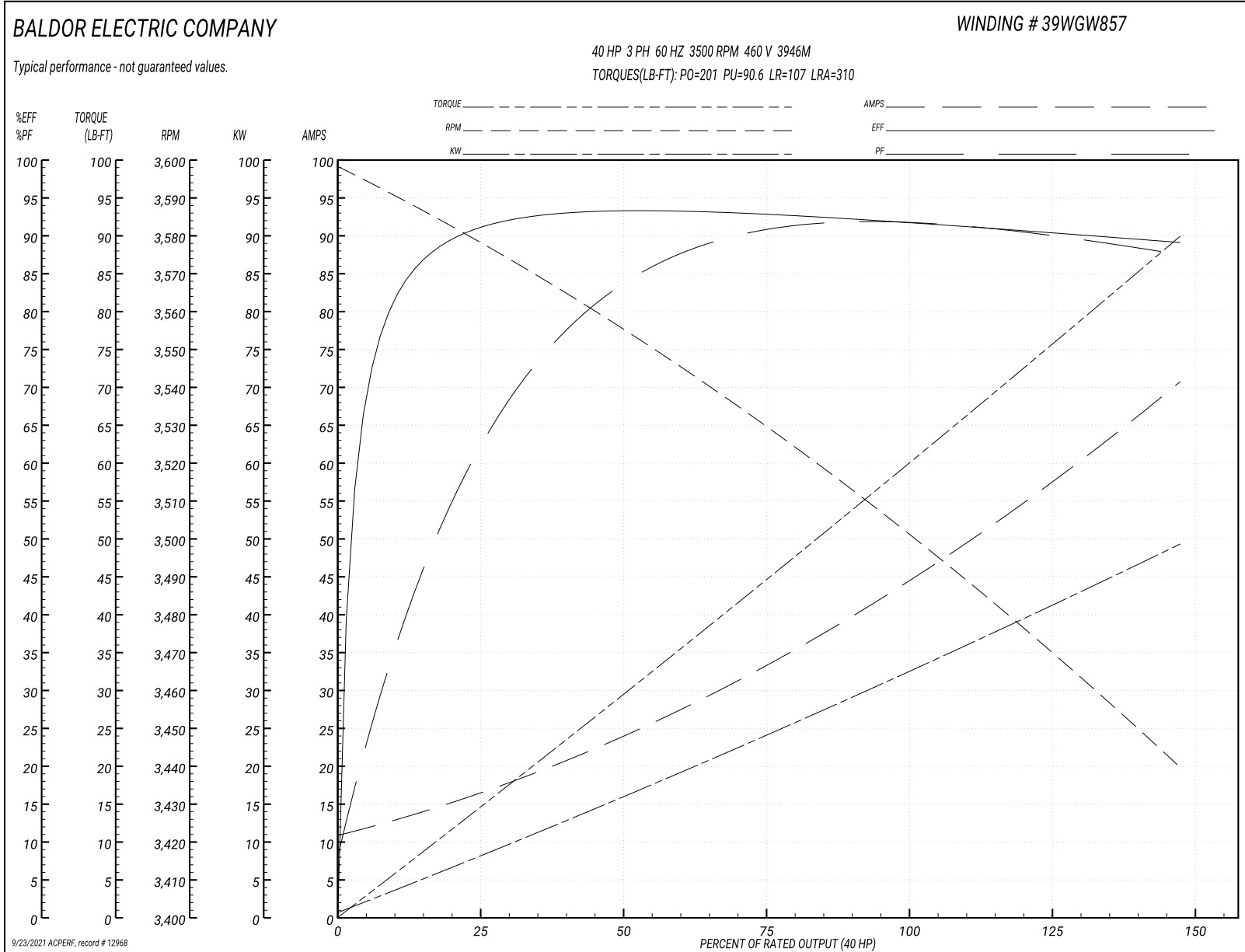
Typical performance - not guaranteed values

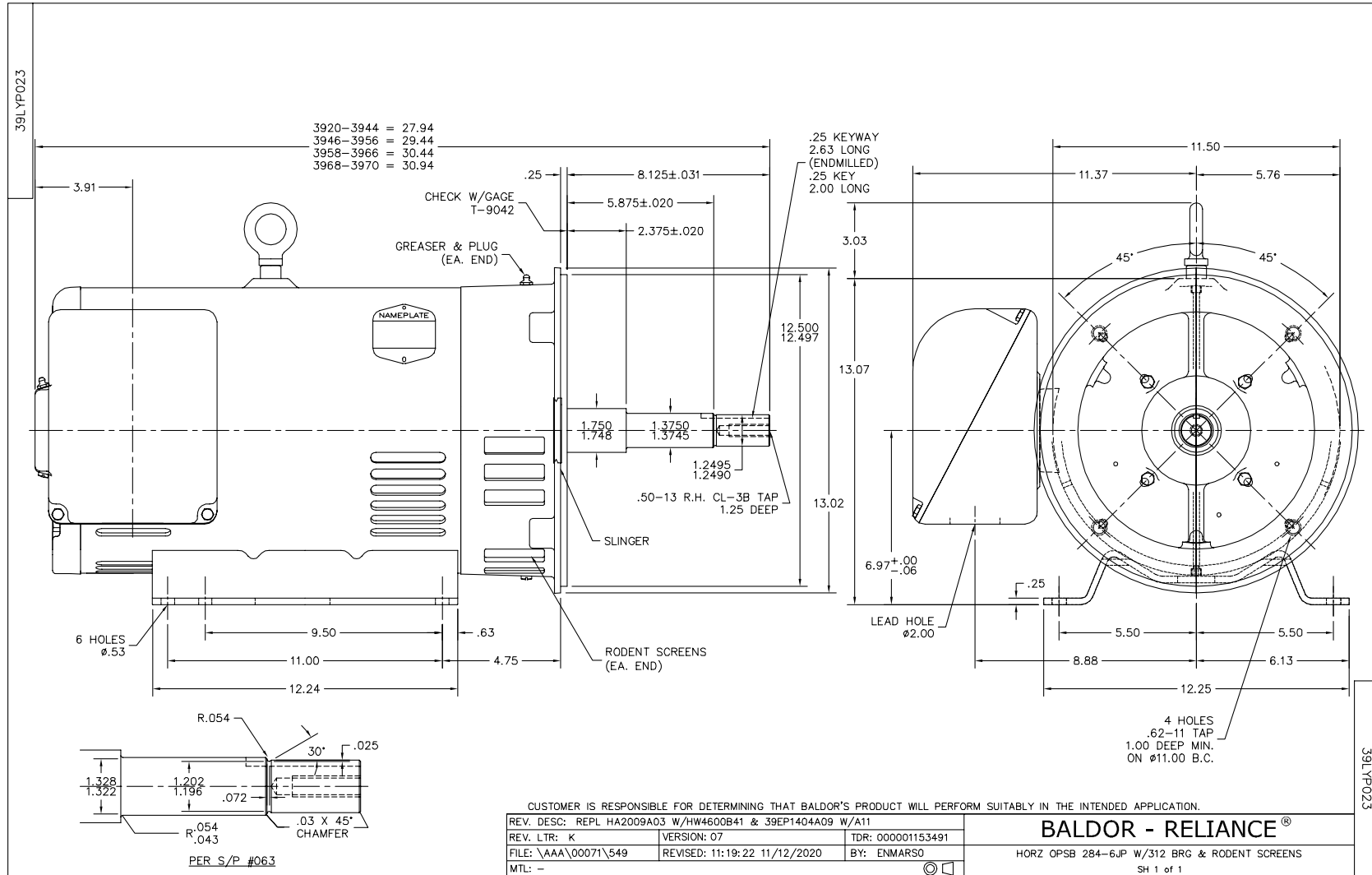
Winding: 39WG857-R001		Type: 3946M		Enclosure: OPSB	
Nameplate Data			460 V, 60 Hz: High Voltage Connection		
Rated Output (HP)	40	Full Load Torque	60 LB-FT		
Volts	230/460	Start Configuration	direct on line		
Full Load Amps	90/45	Breakdown Torque	201 LB-FT		
R.P.M.	3500	Pull-up Torque	90.6 LB-FT		
Hz	60 Phase	Locked-rotor Torque	107 LB-FT		
NEMA Design Code	B	Starting Current	310 A		
Service Factor (S.F.)	1.15	No-load Current	11.46 A		
NEMA Nom. Eff.	91.7	Line-line Res. @ 25°C	0.2392 Ω		
Rating - Duty	40C AMB-CONT	Temp. Rise @ Rated Load	57°C		
S.F. Amps		Temp. Rise @ S.F. Load	75°C		
		Locked-rotor Power Factor	28		
		Rotor inertia	1.17 LB-FT ²		

Load Characteristics 460 V, 60 Hz, 40 HP

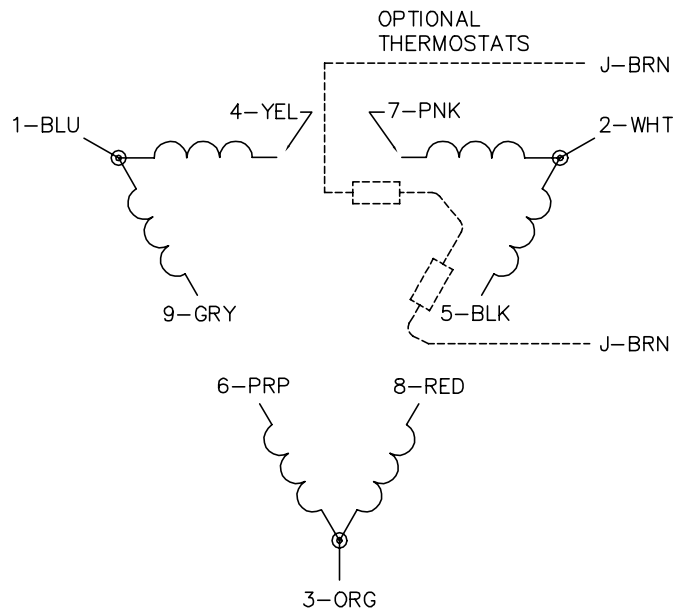
% of Rated Load	25	50	75	100	125	150	S.F.
Power Factor	66	84	89	91	91	91	91
Efficiency	90.6	93	92.8	91.9	90.6	89	91.2
Speed	3577	3554	3529	3502	3472	3439	3485
Line amperes	15.69	24.03	34	44.9	56.8	70.6	52

Performance Graph at 460V, 60Hz, 40.0HP Typical performance - Not guaranteed values

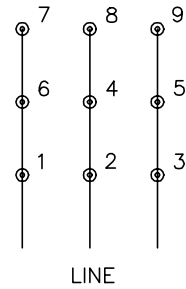




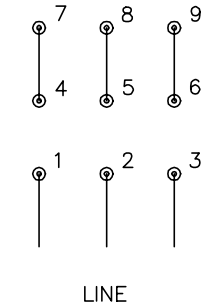
CD0180



LOW VOLTAGE
(2D)



HIGH VOLTAGE
(1D)



NOTES:

1. INTERCHANGE ANY TWO LINE LEADS TO REVERSE ROTATION.
2. OPTIONAL THERMOSTATS ARE PROVIDED WHEN SPECIFIED.
3. ACTUAL NUMBER OF INTERNAL PARALLEL CIRCUITS MAY BE A MULTIPLE OF THOSE SHOWN ABOVE.
4. LEAD COLORS ARE OPTIONAL. LEADS MUST ALWAYS BE NUMBERED AS SHOWN.

CD0180

REV. DESC: ADD CLASS CONN00000007		
REV. LTR: D	VERSION: 01	TDR: 000001099922
FILE: \AAA\00005\148	REVISED: 10:25:29 02/19/2019	BY: ENBRIRO
MTL: -	© □	

BALDOR - RELIANCE®

3PH, DV, 9 LEADS, DELTA CONNECTION

SH 1 of 1