

BALDOR® • RELIANCE 

Product Information Packet

L1408T-50

3HP,1425RPM,1PH,50HZ,184T,3646LC,OPEN,F1

Part Detail							
Revision:	AV	Status:	PRD/A	Change #:		Proprietary:	No
Type:	AC	Elec. Spec:	36WGX359	CD Diagram:	CD0055	Mfg Plant:	
Mech. Spec:	36E002	Layout:	36LYE002	Poles:	04	Created Date:	
Base:	RG	Eff. Date:	07-08-2021	Leads:	4#14 A PH,2#16 B PH		

Specs			
Catalog Number:	L1408T-50	Insulation Class:	B
Enclosure:	OPEN	Inverter Code:	Not Inverter
Frame:	184T	KVA Code:	G
Frame Material:	Steel	Lifting Lugs:	No Lifting Lugs
Output @ Frequency:	3.000 HP @ 50 HZ	Locked Bearing Indicator:	No Locked Bearing
Synchronous Speed @ Frequency:	1500 RPM @ 50 HZ	Motor Lead Quantity/Wire Size:	4 @ 14 AWG, A PH
Voltage @ Frequency:	220.0 V @ 50 HZ	Motor Lead Exit:	Ko Box
	110.0 V @ 50 HZ	Motor Lead Termination:	Flying Leads
XP Class and Group:	None	Motor Type:	3646LC
XP Division:	Not Applicable	Mounting Arrangement:	F1
Agency Approvals:	UR	Power Factor:	85
	WEEE	Product Family:	General Purpose
	CSA	Pulley End Bearing Type:	Ball
	CE	Pulley Face Code:	Standard
Auxillary Box:	No Auxillary Box	Pulley Shaft Indicator:	Standard
Auxillary Box Lead Termination:	None	Rodent Screen:	None
Base Indicator:	Rigid	RoHS Status:	ROHS COMPLIANT
Bearing Grease Type:	Polyrex EM (-20F +300F)	Shaft Extension Location:	Pulley End

Blower:	None	Shaft Ground Indicator:	No Shaft Grounding
Current @ Voltage:	16.000 A @ 220.0 V	Shaft Rotation:	Reversible
	32.000 A @ 110.0 V	Shaft Slinger Indicator:	No Slinger
Design Code:	L	Speed Code:	Single Speed
Drip Cover:	No Drip Cover	Motor Standards:	NEMA
Duty Rating:	CONT	Starting Method:	Direct on line
Electrically Isolated Bearing:	Not Electrically Isolated	Thermal Device - Bearing:	None
Feedback Device:	NO FEEDBACK	Thermal Device - Winding:	None
Front Face Code:	Standard	Vibration Sensor Indicator:	No Vibration Sensor
Front Shaft Indicator:	None	Winding Thermal 1:	None
Heater Indicator:	No Heater	Winding Thermal 2:	None

Nameplate NP1372L											
CAT.NO.	L1408T-50										
SPEC.	36E02X359										
HP	3/2.24KW IEC60034-30										
VOLTS	110/220										
AMP	32/16										
RPM	1425 1/MIN IC01 42KG										
FRAME	184T					HZ	50		PH	1	
SER.F.	1.15					CODE	G	DES	L	CL	B
NEMA-NOM-EFF	75.5					PF	85				
RATING	40C AMB-CONT										
CC									USABLE AT 208V		
DE	6206					ODE	6205				
ENCL	OPEN					SN					
	IP23										

AC Induction Motor Performance Data

Record # 61463

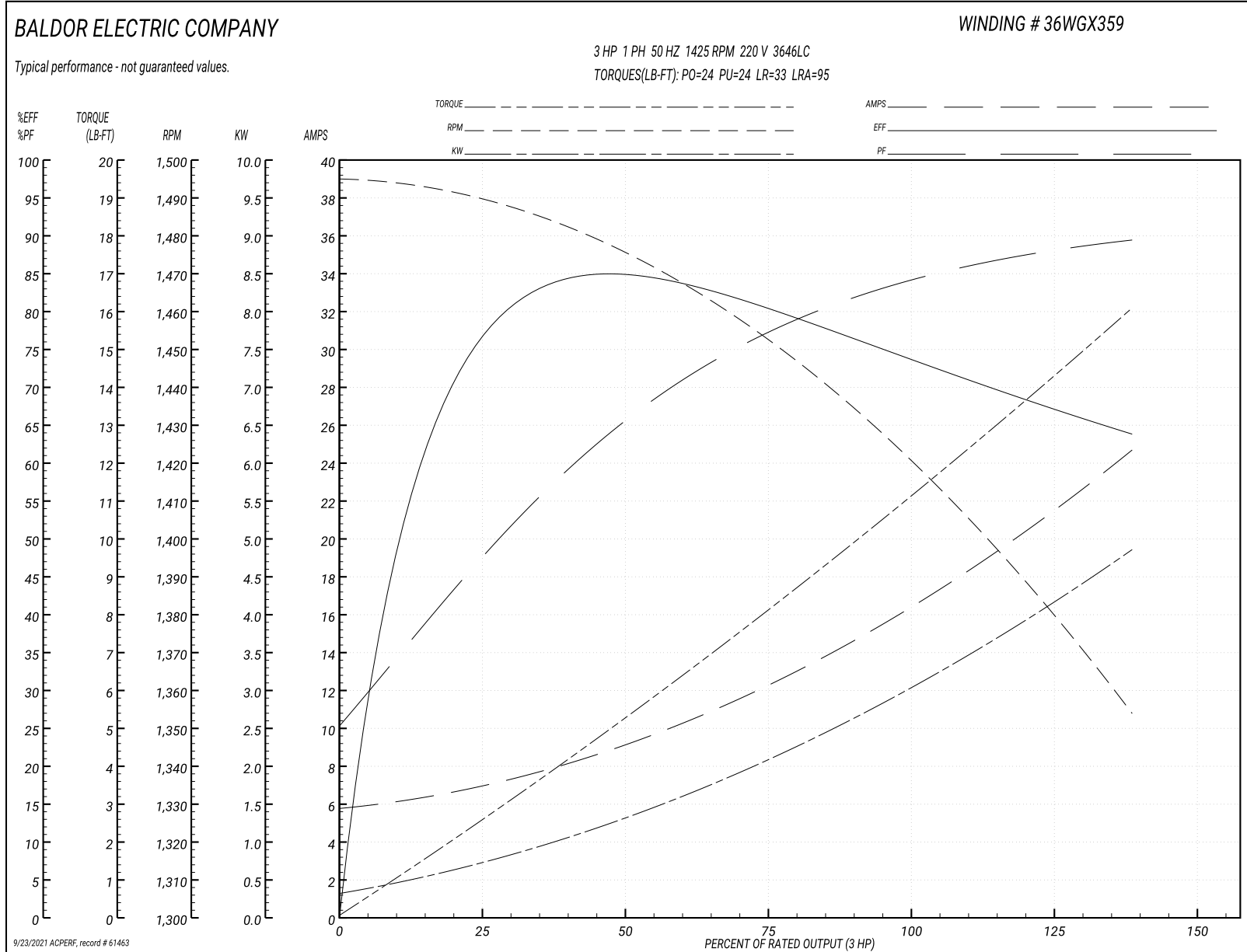
Typical performance - not guaranteed values

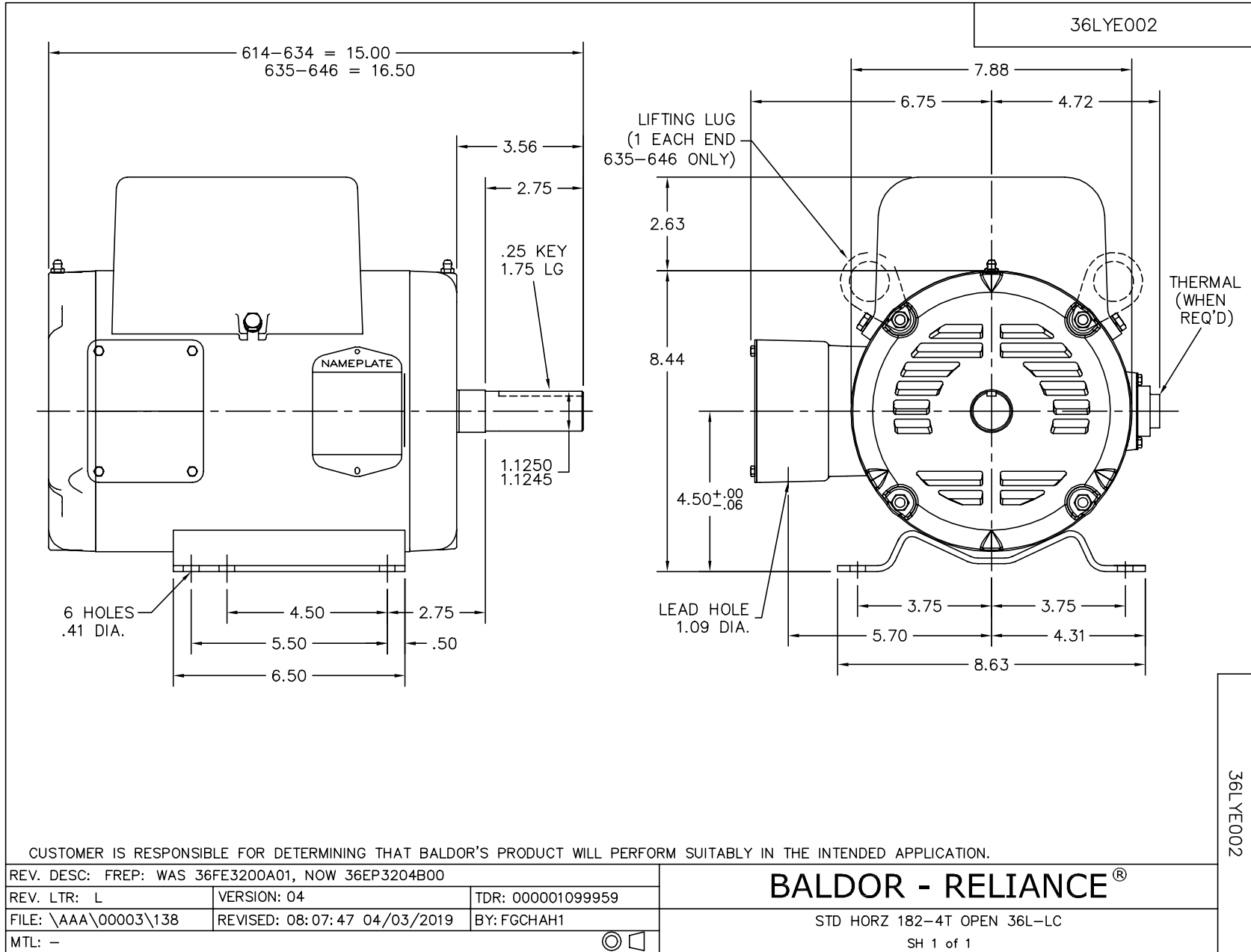
Winding: 36WGX359-R004		Type: 3646LC		Enclosure: OPEN	
Nameplate Data			220 V, 50 Hz: High Voltage Connection		
Rated Output (HP)	3	Full Load Torque	10.8 LB-FT		
Volts	110/220	Start Configuration	direct on line		
Full Load Amps	32/16	Breakdown Torque	24 LB-FT		
R.P.M.	1425	Pull-up Torque	24 LB-FT		
Hz	50 Phase	1	Locked-rotor Torque	33 LB-FT	
NEMA Design Code	L KVA Code	G	Starting Current	95 A	
Service Factor (S.F.)	1.15		No-load Current	5.7 A	
NEMA Nom. Eff.	75.5 Power Factor	85	Line-line Res. @ 25°C	0.828 Ω A Ph 0.999 Ω B Ph	
Rating - Duty	40C AMB-CONT		Temp. Rise @ Rated Load	80°C	
S.F. Amps			Temp. Rise @ S.F. Load	90°C	

Load Characteristics 220 V, 50 Hz, 3 HP

% of Rated Load	25	50	75	100	125	150	S.F.
Power Factor	54	66	76	83	87	90	85
Efficiency	70.8	78.5	82.5	75.6	70.2	62.6	72.4
Speed	1487	1466	1459	1425	1396	1348	1408
Line amperes	6.8	9.8	12.1	15.8	20	25	18.32

Performance Graph at 220V, 50Hz, 3.0HP Typical performance - Not guaranteed values





CUSTOMER IS RESPONSIBLE FOR DETERMINING THAT BALDOR'S PRODUCT WILL PERFORM SUITABLY IN THE INTENDED APPLICATION.

REV. DESC: FREP: WAS 36FE3200A01, NOW 36EP3204B00		
REV. LTR: L	VERSION: 04	TDR: 000001099959
FILE: \AAA\00003\138	REVISED: 08:07:47 04/03/2019	BY: FGCHAH1
MTL: -	© □	

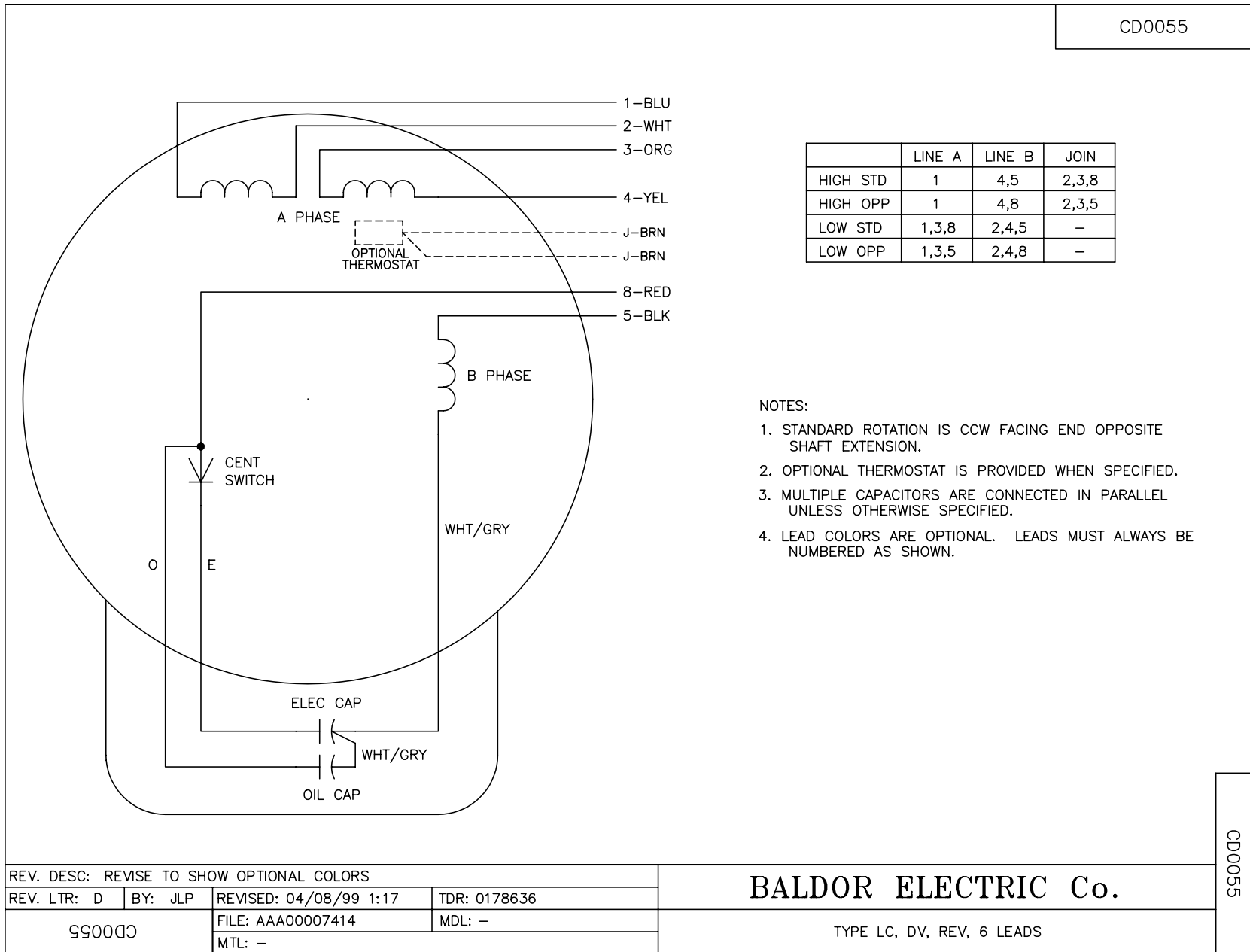
BALDOR - RELIANCE®

STD HORZ 182-4T OPEN 36L-LC

SH 1 of 1

36LYE002

CD0055



NOTES:

1. STANDARD ROTATION IS CCW FACING END OPPOSITE SHAFT EXTENSION.
2. OPTIONAL THERMOSTAT IS PROVIDED WHEN SPECIFIED.
3. MULTIPLE CAPACITORS ARE CONNECTED IN PARALLEL UNLESS OTHERWISE SPECIFIED.
4. LEAD COLORS ARE OPTIONAL. LEADS MUST ALWAYS BE NUMBERED AS SHOWN.

REV. DESC: REVISE TO SHOW OPTIONAL COLORS			
REV. LTR: D	BY: JLP	REVISED: 04/08/99 1:17	TDR: 0178636
990000		FILE: AAA00007414	MDL: -
		MTL: -	

BALDOR ELECTRIC Co.

TYPE LC, DV, REV, 6 LEADS

CD0055