

BALDOR® • RELIANCE 

Product Information Packet

L1410T

5HP,1725RPM,1PH,60HZ,184T,3640LC,OPEN,F1

Part Detail							
Revision:	-	Status:	PRD/A	Change #:		Proprietary:	No
Type:	AC	Elec. Spec:	36WGQ041	CD Diagram:	CD0017A02	Mfg Plant:	
Mech. Spec:	36M925	Layout:	36LYM925	Poles:	04	Created Date:	12-14-2020
Base:	RG	Eff. Date:	12-16-2020	Leads:	2#10 A PH,2#16 B PH		

Specs			
Catalog Number:	L1410T	Inverter Code:	Not Inverter
Enclosure:	OPEN	KVA Code:	G
Frame:	184T	Lifting Lugs:	No Lifting Lugs
Frame Material:	Steel	Locked Bearing Indicator:	No Locked Bearing
Output @ Frequency:	5.000 HP @ 60 HZ	Motor Lead Quantity/Wire Size:	2 @ 10 AWG, A PH
Synchronous Speed @ Frequency:	1800 RPM @ 60 HZ	Motor Lead Exit:	Ko Box
Voltage @ Frequency:	230.0 V @ 60 HZ	Motor Lead Termination:	Flying Leads
XP Class and Group:	None	Motor Type:	3640LC
XP Division:	Not Applicable	Mounting Arrangement:	F1
Agency Approvals:	CSA	Power Factor:	95
	UR	Product Family:	General Purpose
Auxillary Box:	No Auxillary Box	Pulley End Bearing Type:	Ball
Auxillary Box Lead Termination:	None	Pulley Face Code:	Standard
Base Indicator:	Rigid	Pulley Shaft Indicator:	Standard
Bearing Grease Type:	Polyrex EM (-20F +300F)	Rodent Screen:	None
Blower:	None	Shaft Extension Location:	Pulley End
Current @ Voltage:	21.000 A @ 230.0 V	Shaft Ground Indicator:	No Shaft Grounding
	23.000 A @ 208.0 V	Shaft Rotation:	Reversible

Design Code:	L	Shaft Slinger Indicator:	No Slinger
Drip Cover:	No Drip Cover	Speed Code:	Single Speed
Duty Rating:	CONT	Motor Standards:	NEMA
Electrically Isolated Bearing:	Not Electrically Isolated	Starting Method:	Direct on line
Feedback Device:	NO FEEDBACK	Thermal Device - Bearing:	None
Front Face Code:	Standard	Thermal Device - Winding:	None
Front Shaft Indicator:	None	Vibration Sensor Indicator:	No Vibration Sensor
Heater Indicator:	No Heater	Winding Thermal 1:	None
Insulation Class:	F	Winding Thermal 2:	None

Nameplate NP1256L										
CAT.NO.	L1410T									
SPEC.	36M925Q041G1									
HP	5									
VOLTS	230									
AMP	21									
RPM	1725									
FRAME	184T				HZ	60			PH	1
SER.F.	1.15		CODE	G	DES	L		CLASS	F	
NEMA-NOM-EFF	82.5		PF	95						
RATING	40C AMB-CONT									
CC								USABLE AT 208V	23	
DE	6206				ODE	6205				
ENCL	OPEN		SN							

AC Induction Motor Performance Data

Record # 85832

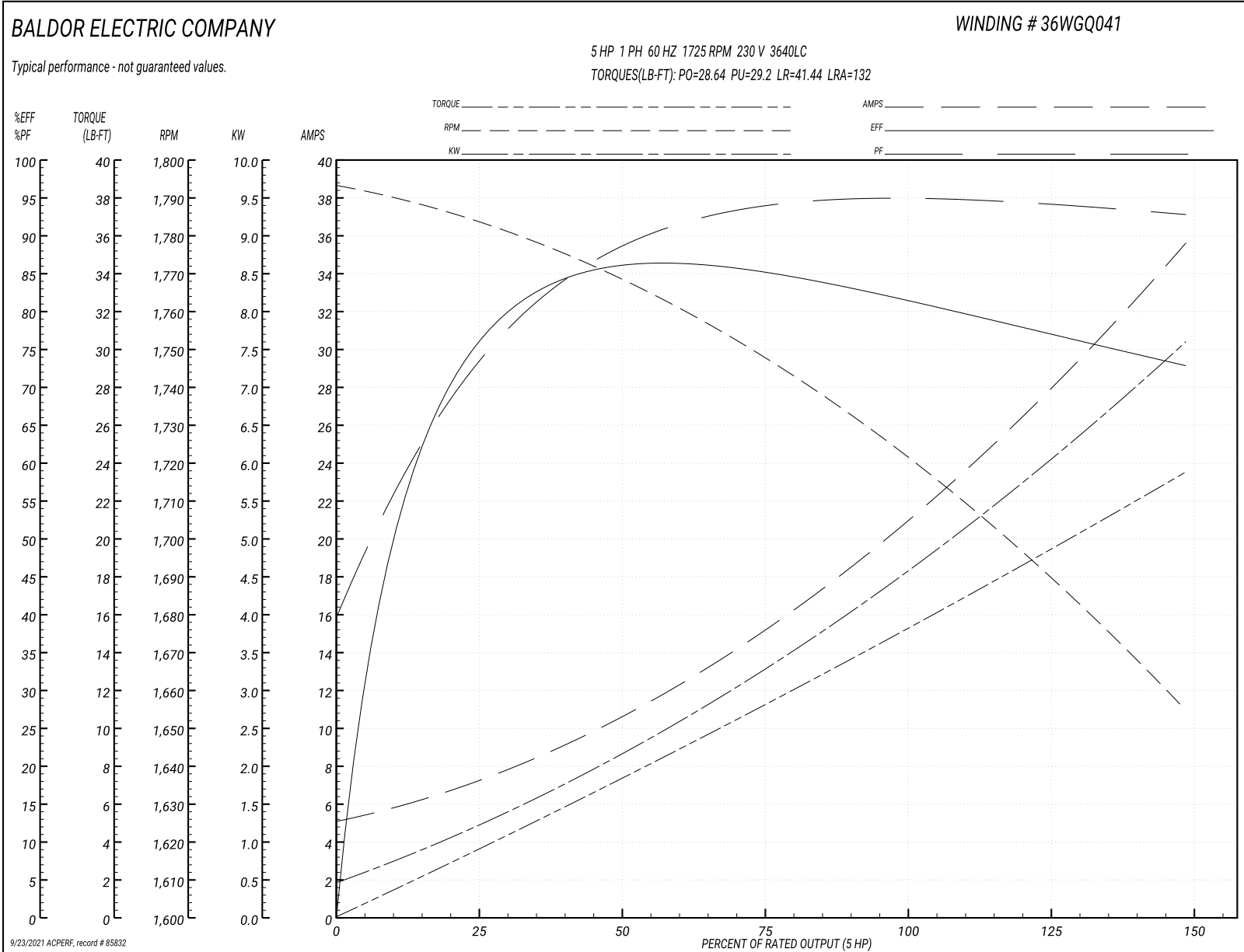
Typical performance - not guaranteed values

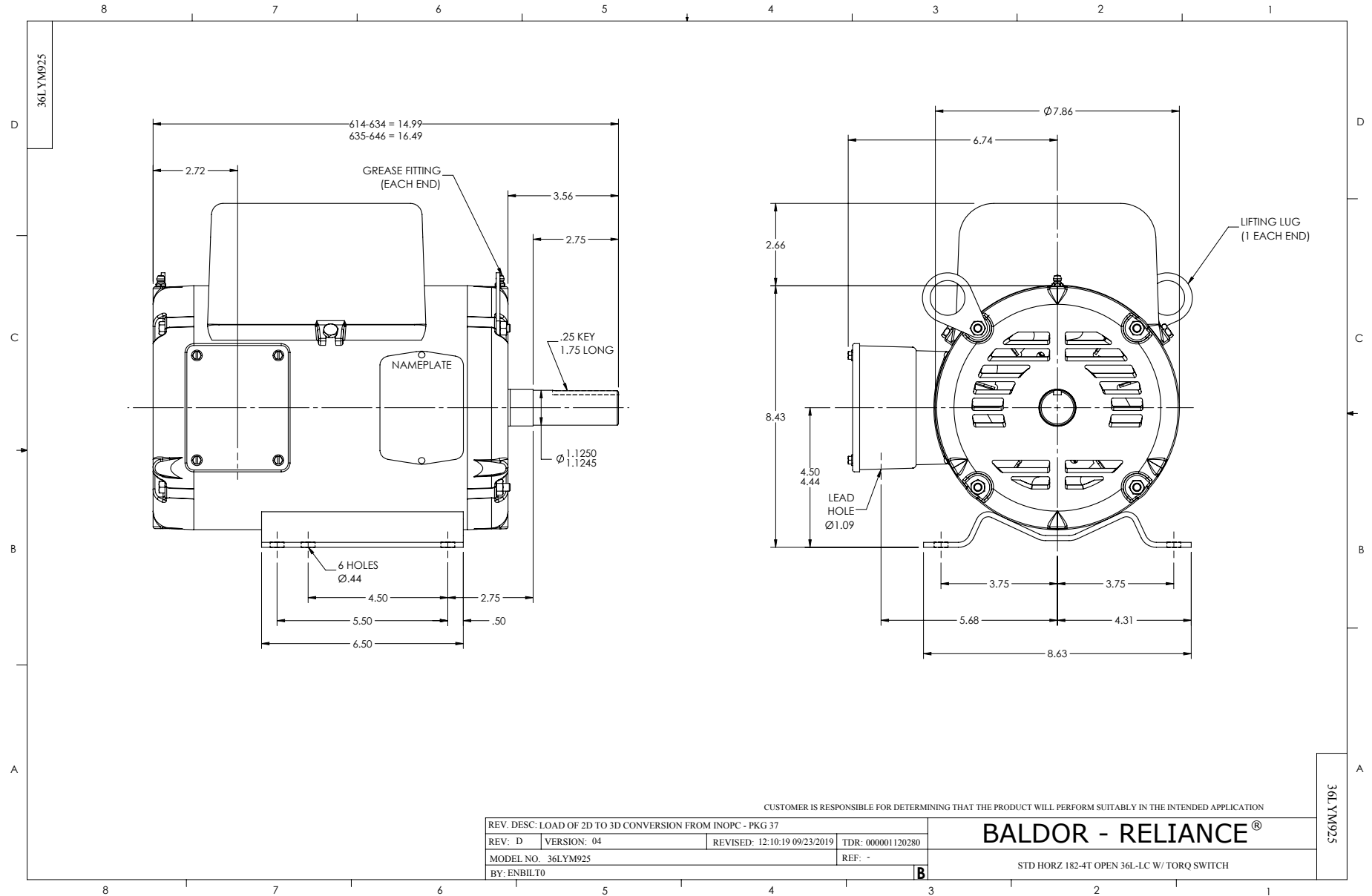
Winding: 36WGQ041-R001		Type: 3640LC		Enclosure: OPEN	
Nameplate Data			230 V, 60 Hz: Single Voltage Motor		
Rated Output (HP)	5	Full Load Torque	15.12 LB-FT		
Volts	230	Start Configuration	direct on line		
Full Load Amps	21	Breakdown Torque	28.64 LB-FT		
R.P.M.	1725	Pull-up Torque	29.2 LB-FT		
Hz	60 Phase	1	Locked-rotor Torque	41.44 LB-FT	
NEMA Design Code	L	KVA Code	G	Starting Current	132 A
Service Factor (S.F.)	1.15	No-load Current	5.01 A		
NEMA Nom. Eff.	82.5	Power Factor	95	Line-line Res. @ 25°C	0.521 Ω A Ph 1.93 Ω B Ph
Rating - Duty	40C	AMB-CONT	Temp. Rise @ Rated Load	78°C	
S.F. Amps			Temp. Rise @ S.F. Load	96°C	
			Locked-rotor Power Factor	90.1	
			Rotor inertia	0.375 lb-ft ²	

Load Characteristics 230 V, 60 Hz, 5 HP

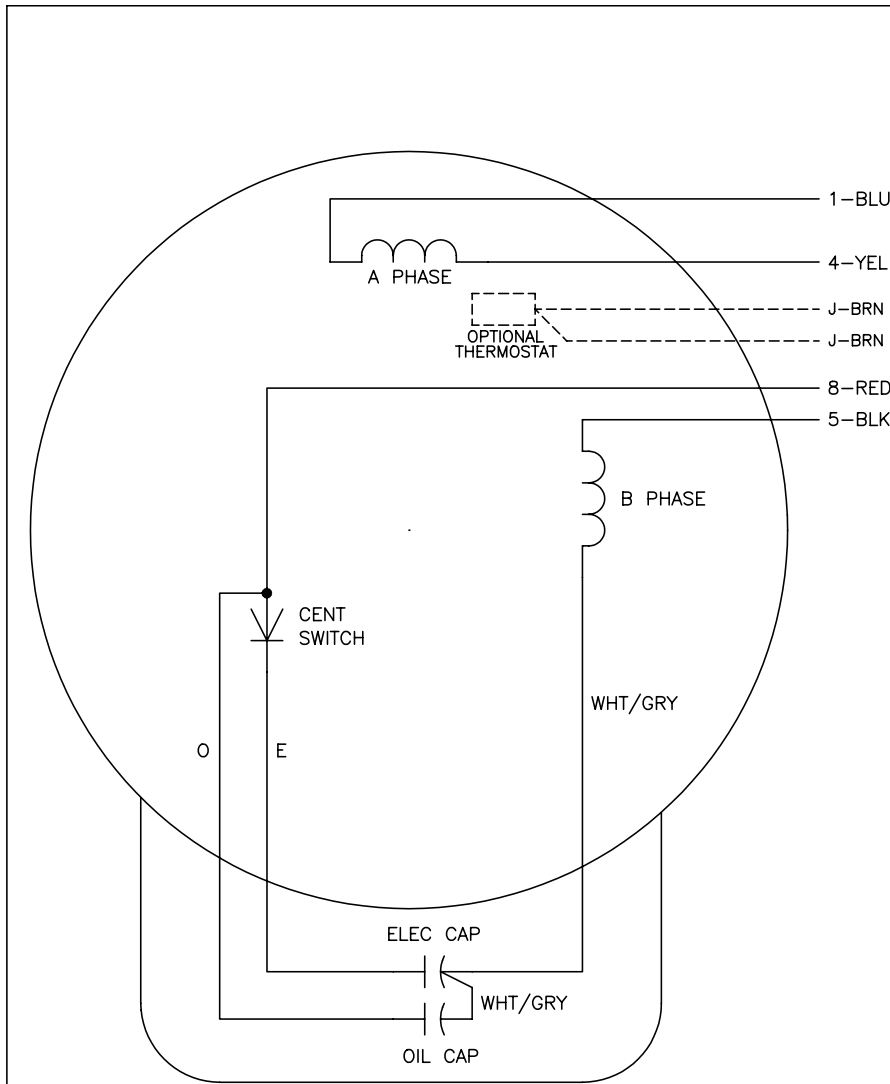
% of Rated Load	25	50	75	100	125	150	S.F.
Power Factor	75	89	94	95	94	93	94
Efficiency	74.3	83.7	84.4	82.5	78.3	72.1	80
Speed	1783	1766	1747	1725	1694	1652	1706
Line amperes	7.15	10.83	15.29	20.62	27.32	35.9	24.6

Performance Graph at 230V, 60Hz, 5.0HP Typical performance - Not guaranteed values





CD0017A02



	LINE A	LINE B
STD	1,8	4,5
OPP	1,5	4,8

NOTES:

1. STANDARD ROTATION IS CCW FACING END OPPOSITE SHAFT EXTENSION.
2. OPTIONAL THERMOSTAT IS PROVIDED WHEN SPECIFIED.
3. MULTIPLE CAPACITORS ARE CONNECTED IN PARALLEL UNLESS OTHERWISE SPECIFIED.
4. LEAD COLORS ARE OPTIONAL. LEADS MUST ALWAYS BE NUMBERED AS SHOWN.

REV. DESC: REVISE TO SHOW OPTIONAL COLORS			
REV. LTR: B	BY: JLP	REVISED: 04/09/99 11:30	TDR: 0178636
CD0017A02		FILE: AAA00007514	MDL: -
		MTL: -	

BALDOR ELECTRIC Co.

TYPE LC, SV, REV, 4 LEADS

CD0017A02