

BALDOR® • RELIANCE 

Product Information Packet

L1512T

10HP,1725RPM,1PH,60HZ,215T,3737LC,OPSB,F

Part Detail							
Revision:	N	Status:	PRD/A	Change #:		Proprietary:	No
Type:	AC	Elec. Spec:	37WGT923	CD Diagram:	CD2094	Mfg Plant:	
Mech. Spec:	37L969	Layout:	37LYL969	Poles:	04	Created Date:	11-16-2007
Base:	RG	Eff. Date:	01-22-2021	Leads:	2#10 A PH,2#14 B PH		

Specs			
Catalog Number:	L1512T	Inverter Code:	Not Inverter
Enclosure:	OPSB	KVA Code:	E
Frame:	215T	Lifting Lugs:	Standard Lifting Lugs
Frame Material:	Steel	Locked Bearing Indicator:	No Locked Bearing
Output @ Frequency:	10.000 HP @ 60 HZ	Motor Lead Quantity/Wire Size:	2 @ 10 AWG, A PH
Synchronous Speed @ Frequency:	1800 RPM @ 60 HZ	Motor Lead Exit:	Cap Box
Voltage @ Frequency:	230.0 V @ 60 HZ	Motor Lead Termination:	Flying Leads
XP Class and Group:	None	Motor Type:	3737LC
XP Division:	Not Applicable	Mounting Arrangement:	F1
Agency Approvals:	UR	Power Factor:	97
	CSA	Product Family:	General Purpose
Auxillary Box:	No Auxillary Box	Pulley End Bearing Type:	Ball
Auxillary Box Lead Termination:	None	Pulley Face Code:	Standard
Base Indicator:	Rigid	Pulley Shaft Indicator:	Standard
Bearing Grease Type:	Polyrex EM (-20F +300F)	Rodent Screen:	None
Blower:	None	Shaft Extension Location:	Pulley End
Current @ Voltage:	39.000 A @ 230.0 V	Shaft Ground Indicator:	No Shaft Grounding
Design Code:	L	Shaft Rotation:	Reversible

Drip Cover:	No Drip Cover	Shaft Slinger Indicator:	No Slinger
Duty Rating:	CONT	Speed Code:	Single Speed
Electrically Isolated Bearing:	Not Electrically Isolated	Motor Standards:	NEMA
Feedback Device:	NO FEEDBACK	Starting Method:	Direct on line
Front Face Code:	Standard	Thermal Device - Bearing:	None
Front Shaft Indicator:	None	Thermal Device - Winding:	None
Heater Indicator:	No Heater	Vibration Sensor Indicator:	No Vibration Sensor
Insulation Class:	F	Winding Thermal 1:	None
		Winding Thermal 2:	None

Nameplate NP1256L										
CAT.NO.	L1512T									
SPEC.	37L969T923G1									
HP	10									
VOLTS	230									
AMP	39									
RPM	1725									
FRAME	215T				HZ	60			PH	1
SER.F.	1.00		CODE	E	DES	L		CLASS	F	
NEMA-NOM-EFF	85.5		PF	97						
RATING	40C AMB-CONT									
CC									USABLE AT 208V	
DE	6307				ODE	6206				
ENCL	OPSB		SN							

AC Induction Motor Performance Data

Record # 61323

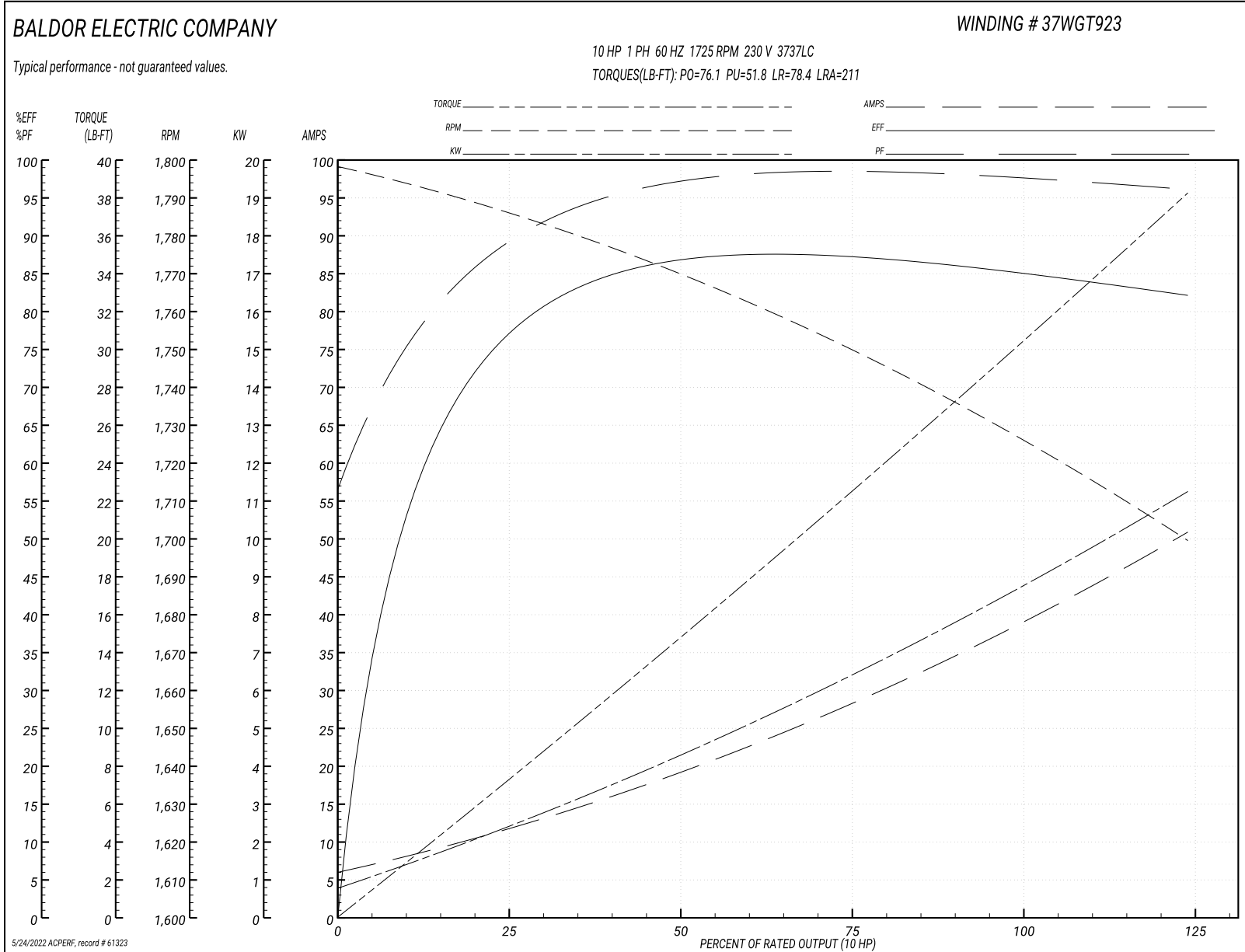
Typical performance - not guaranteed values

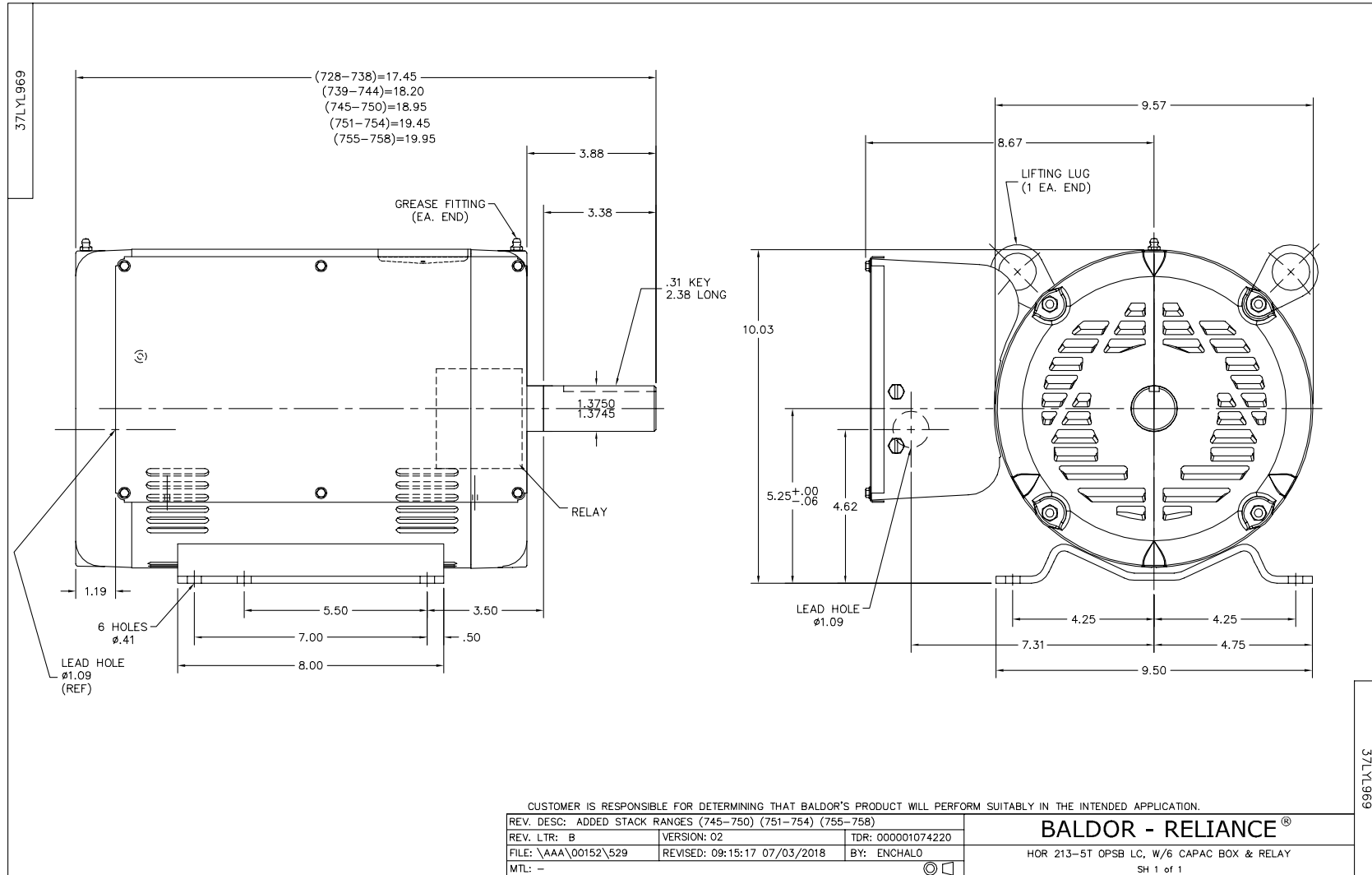
Winding: 37WGT923-R003		Type: 3737LC		Enclosure: OPSB	
Nameplate Data			230 V, 60 Hz: Single Voltage Motor		
Rated Output (HP)	10	Full Load Torque	30.3 LB-FT		
Volts	230	Start Configuration	direct on line		
Full Load Amps	39	Breakdown Torque	76.1 LB-FT		
R.P.M.	1725	Pull-up Torque	51.8 LB-FT		
Hz	60 Phase	1	Locked-rotor Torque	78.4 LB-FT	
NEMA Design Code	L KVA Code	E	Starting Current	211 A	
Service Factor (S.F.)		1	No-load Current	6.2 A	
NEMA Nom. Eff.	85.5 Power Factor	97	Line-line Res. @ 25°C	0.242 Ω A Ph 0.538 Ω B Ph	
Rating - Duty	40C AMB-CONT		Temp. Rise @ Rated Load	73°C	

Load Characteristics 230 V, 60 Hz, 10 HP

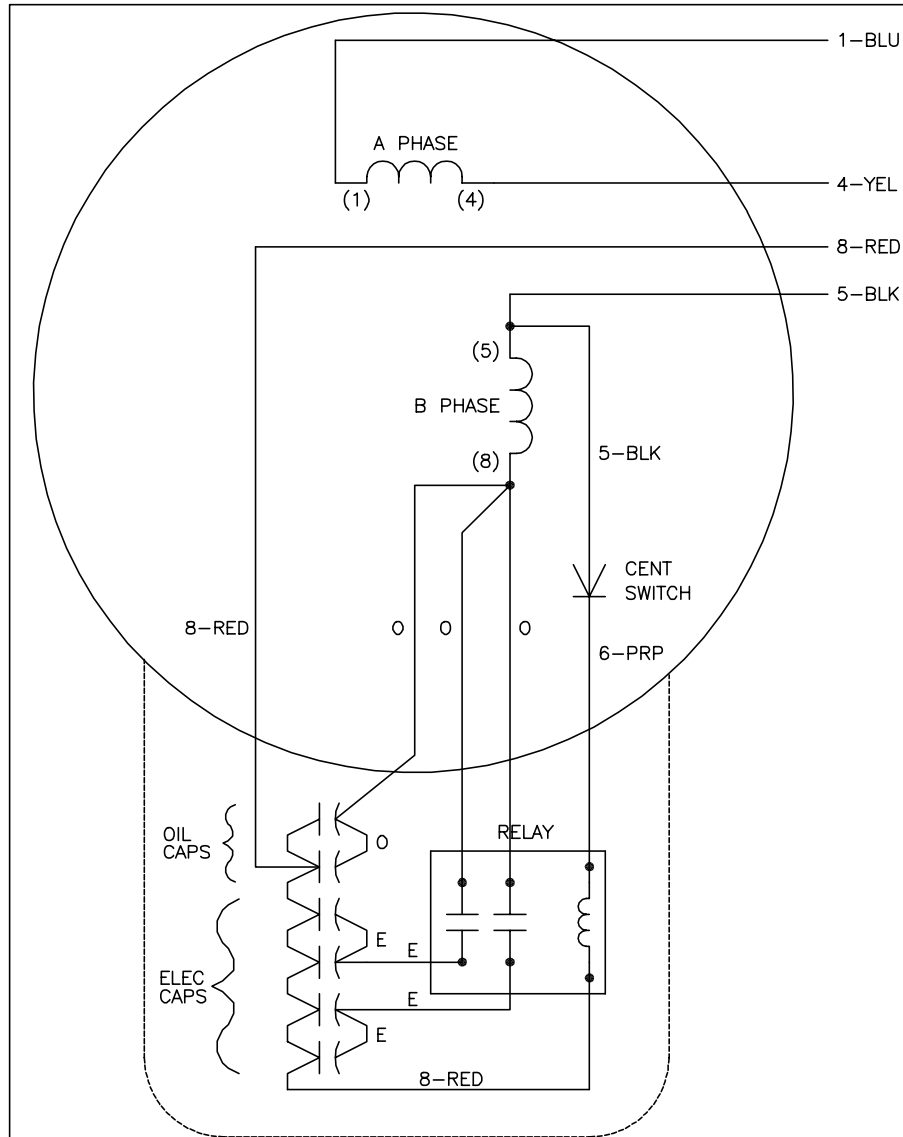
% of Rated Load	25	50	75	100	125
Power Factor	94	97	98	97	96
Efficiency	76.1	86	87.5	85.7	81.8
Speed	1785	1770	1751	1727	1699
Line amperes	11.3	19.2	28.3	38.8	50.9

Performance Graph at 230V, 60Hz, 10.0HP Typical performance - Not guaranteed values





CD2094



	LINE A	LINE B
STD	1,8	4,5
OPP	1,5	4,8

NOTES:

1. STANDARD ROTATION IS CCW FACING END OPPOSITE SHAFT EXTENSION.
2. MULTIPLE CAPACITORS ARE CONNECTED IN PARALLEL UNLESS OTHERWISE SPECIFIED.
3. DRESS LEADS AWAY FROM RELAY TO AVOID INTERFERENCE.
4. CAPS AND RELAY MAY BE SEPARATELY MOUNTED.
5. LEAD COLORS ARE OPTIONAL. LEADS MUST ALWAYS BE NUMBERED AS SHOWN.

CD2094

REV. DESC: NEW		
REV. LTR: -	VERSION: 00	TDR: 000000570759
FILE: \AAA\00177\864	REVISED: 11:52:42 12/14/2010	
MTL: -	BY: ENMICWO	

BALDOR

TYPE LC, SV, REV, 4LD, RELAY W/CENT SWITCH

SH 1 of 1