

BALDOR® • RELIANCE 

Product Information Packet

L3508T

.75HP, 1145RPM, 1PH, 60HZ, 143T, 3526LC, TEFC

Part Detail							
Revision:	-	Status:	PRD/A	Change #:		Proprietary:	No
Type:	AC	Elec. Spec:	35WGG246	CD Diagram:	CD0055	Mfg Plant:	
Mech. Spec:	35EE001	Layout:	35LYEE001	Poles:	06	Created Date:	08-01-2022
Base:	RG	Eff. Date:	10-14-2022	Leads:	6#18		

Specs			
Catalog Number:	L3508T	Insulation Class:	F
Enclosure:	TEFC	Inverter Code:	Not Inverter
Frame:	143T	KVA Code:	G
Frame Material:	Steel	Lifting Lugs:	No Lifting Lugs
Motor Letter Type:	Cap Start, Cap Run	Locked Bearing Indicator:	No Locked Bearing
Output @ Frequency:	.750 HP @ 60 HZ	Motor Lead Quantity/Wire Size:	6 @ 18 AWG
Synchronous Speed @ Frequency:	1200 RPM @ 60 HZ	Motor Lead Exit:	Ko Box
Voltage @ Frequency:	115.0 V @ 60 HZ	Motor Lead Termination:	Flying Leads
	230.0 V @ 60 HZ	Motor Type:	3526LC
XP Class and Group:	None	Mounting Arrangement:	F1
XP Division:	Not Applicable	Power Factor:	82
Agency Approvals:	UR	Product Family:	General Purpose
	CSA	Pulley End Bearing Type:	Ball
Auxillary Box:	No Auxillary Box	Pulley Face Code:	Standard
Auxillary Box Lead Termination:	None	Pulley Shaft Indicator:	Standard
Base Indicator:	Rigid	Rodent Screen:	None
Bearing Grease Type:	Polyrex EM (-20F +300F)	RoHS Status:	ROHS COMPLIANT
Blower:	None	Shaft Extension Location:	Pulley End

Current @ Voltage:	4.200 A @ 230.0 V	Shaft Ground Indicator:	No Shaft Grounding
	7.800 A @ 115.0 V	Shaft Rotation:	Reversible
Design Code:	L	Shaft Slinger Indicator:	No Slinger
Drip Cover:	No Drip Cover	Speed Code:	Single Speed
Duty Rating:	CONT	Motor Standards:	NEMA
Electrically Isolated Bearing:	Not Electrically Isolated	Starting Method:	Direct on line
Feedback Device:	NO FEEDBACK	Thermal Device - Bearing:	None
Front Face Code:	Standard	Thermal Device - Winding:	None
Front Shaft Indicator:	None	Vibration Sensor Indicator:	No Vibration Sensor
Heater Indicator:	No Heater	Winding Thermal 1:	None
		Winding Thermal 2:	None

Nameplate NP1256L										
CAT.NO.	L3508T									
SPEC.	35EE001G246									
HP	.75									
VOLTS	115/230									
AMP	7.8/4.2									
RPM	1145									
FRAME	143T				HZ	60			PH	1
SER.F.	1.00		CODE	G	DES	L		CLASS	F	
NEMA-NOM-EFF	74		PF	82						
RATING	40C AMB-CONT									
CC									USABLE AT 208V	N/A
DE	6205				ODE	6203				
ENCL	TEFC		SN							

AC Induction Motor Performance Data

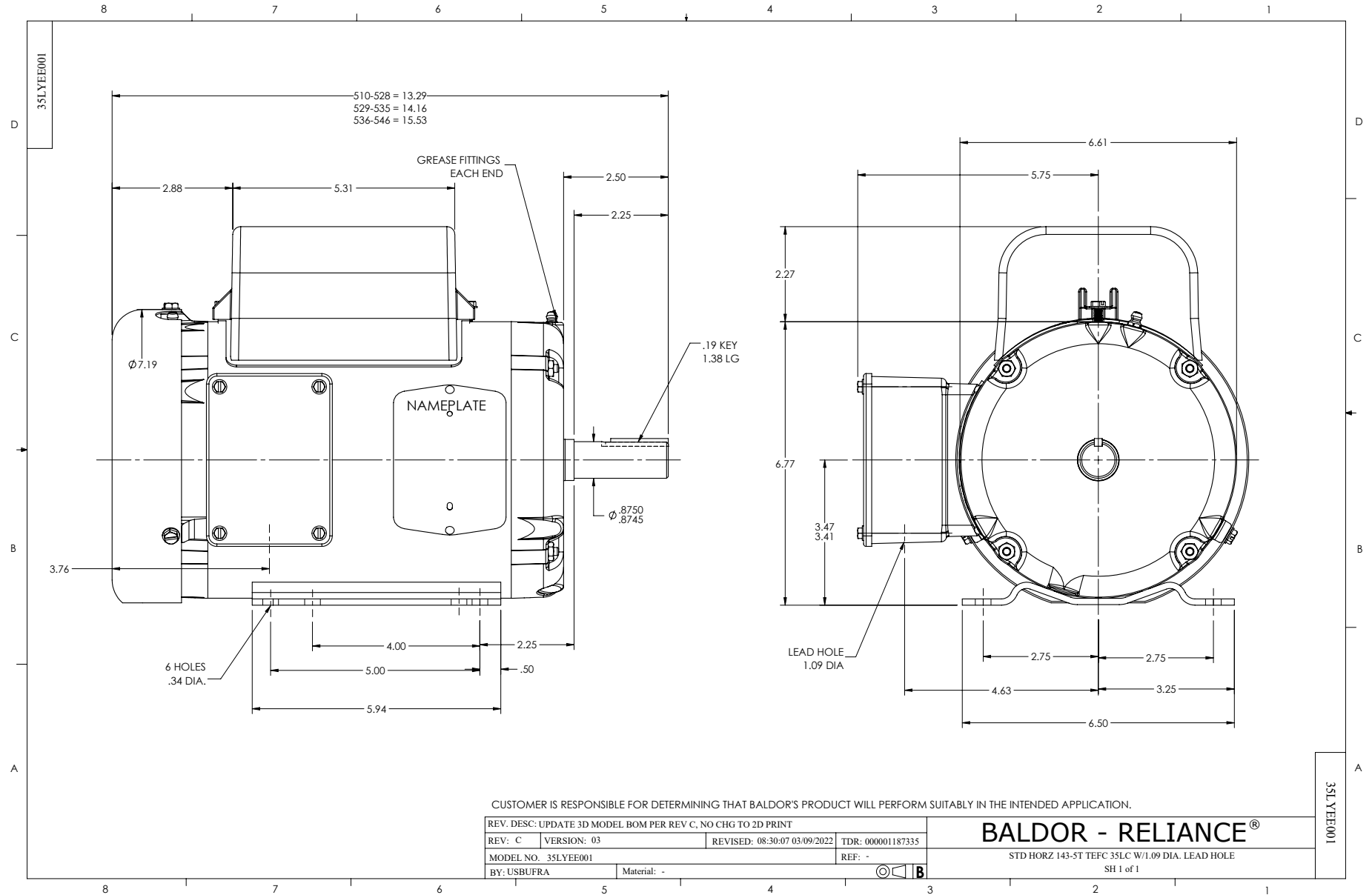
Record # 91093

Preliminary Data Sheet

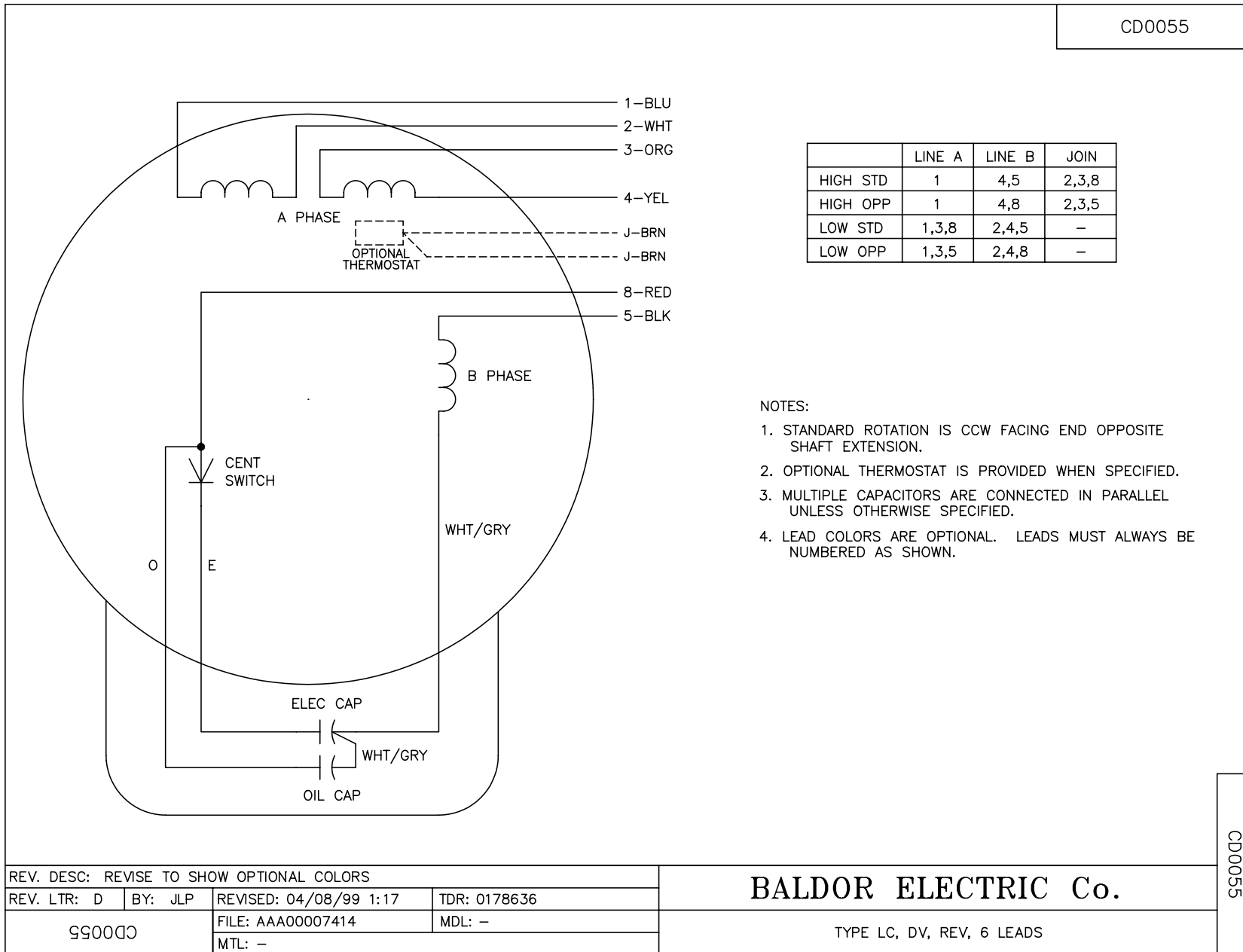
Winding: 35WGG246-R003			Type: 3526LC		Enclosure: TEFC	
Nameplate Data				115 V, 60 Hz: Low Voltage Connection		
Rated Output (HP)	.75		Full Load Torque	3.4 LB-FT		
Volts	115/230		Start Configuration	direct on line		
Full Load Amps	7.8/4.2		Breakdown Torque	7.79 LB-FT		
R.P.M.	1145		Pull-up Torque	4.49 LB-FT		
Hz	60	Phase	1	Locked-rotor Torque	9.71 LB-FT	
NEMA Design Code	L	KVA Code	G	Starting Current	46.2 A	
Service Factor (S.F.)	1			No-load Current	4.55 A	
NEMA Nom. Eff.	74	Power Factor	82	Line-line Res. @ 25°C	1.62 Ω A Ph 2.35 Ω B Ph	
Rating - Duty	40C AMB-CONT			Temp. Rise @ Rated Load	62°C	
				Locked-rotor Power Factor	97.3	
				Rotor inertia	0.188 lb-ft ²	

Load Characteristics 115 V, 60 Hz, 0.75 HP

% of Rated Load	25	50	75	100	125	150
Power Factor	58	73	82	86	89	89
Efficiency	45.9	64.1	72.2	74.7	73.4	67.7
Speed	1190	1182	1172	1160	1143	1115
Line amperes	4.64	5.24	6.19	7.54	9.29	12.04



CD0055



REV. DESC: REVISE TO SHOW OPTIONAL COLORS			
REV. LTR: D	BY: JLP	REVISED: 04/08/99 1:17	TDR: 0178636
990000		FILE: AAA00007414	MDL: -
		MTL: -	

BALDOR ELECTRIC Co.

TYPE LC, DV, REV, 6 LEADS

CD0055