

**BALDOR® • RELIANCE** 

**Product Information Packet**

**L3603**

**1.5HP, 1725RPM, 1PH, 60HZ, 184, 3628L, TEFC, F1**

Part Detail							
Revision:	AB	Status:	INA/A	Change #:		Proprietary:	No
Type:	AC	Elec. Spec:	36WG0079	CD Diagram:	CD0001	Mfg Plant:	
Mech. Spec:	36C011	Layout:	36LYC011	Poles:	04	Created Date:	
Base:	RG	Eff. Date:	04-08-2016	Leads:	4#14 A PH,2#16 B PH		

Specs			
Catalog Number:	L3603	Insulation Class:	B
Enclosure:	TEFC	Inverter Code:	Not Inverter
Frame:	184	KVA Code:	L
Frame Material:	Steel	Lifting Lugs:	No Lifting Lugs
Motor Letter Type:	Cap Start, Induction Run	Locked Bearing Indicator:	No Locked Bearing
Output @ Frequency:	1.500 HP @ 60 HZ	Motor Lead Quantity/Wire Size:	4 @ 14 AWG, A PH
Synchronous Speed @ Frequency:	1800 RPM @ 60 HZ	Motor Lead Exit:	Ko Box
Voltage @ Frequency:	230.0 V @ 60 HZ	Motor Lead Termination:	Flying Leads
	115.0 V @ 60 HZ	Motor Type:	3628L
XP Division:	Not Applicable	Mounting Arrangement:	F1
Agency Approvals:	UR	Power Factor:	70
	CSA	Product Family:	General Purpose
Auxillary Box:	No Auxillary Box	Pulley End Bearing Type:	Ball
Auxillary Box Lead Termination:	None	Pulley Face Code:	Standard
Base Indicator:	RG	Pulley Shaft Indicator:	Standard
Bearing Grease Type:	Polyrex EM (-20F +300F)	Rodent Screen:	None
Blower:	None	Shaft Extension Location:	Pulley End
Current @ Voltage:	10.000 A @ 208.0 V	Shaft Ground Indicator:	No Shaft Grounding

	19.000 A @ 115.0 V	<b>Shaft Rotation:</b>	Reversible
	9.500 A @ 230.0 V	<b>Shaft Slinger Indicator:</b>	No Slinger
<b>Design Code:</b>	L	<b>Speed Code:</b>	Single Speed
<b>Drip Cover:</b>	No Drip Cover	<b>Motor Standards:</b>	NEMA
<b>Duty Rating:</b>	CONT	<b>Starting Method:</b>	Direct on line
<b>Electrically Isolated Bearing:</b>	Not Electrically Isolated	<b>Thermal Device - Bearing:</b>	None
<b>Feedback Device:</b>	NO FEEDBACK	<b>Thermal Device - Winding:</b>	None
<b>Front Face Code:</b>	Standard	<b>Vibration Sensor Indicator:</b>	No Vibration Sensor
<b>Front Shaft Indicator:</b>	None	<b>Winding Thermal 1:</b>	None
<b>Heater Indicator:</b>	No Heater	<b>Winding Thermal 2:</b>	None

Nameplate NP1256L												
CAT.NO.												
SPEC.	36C11-79											
HP	1.5											
VOLTS	115/230											
AMP	19/9.5											
RPM	1725											
FRAME	184					HZ	60			PH	1	
SER.F.	1.15					CODE	L		DES	L	CLASS	B
NEMA-NOM-EFF	70					PF	70					
RATING	40C AMB-CONT											
CC										USABLE AT 208V	N/A	
DE	6206					ODE	6205					
ENCL	TEFC					SN						

**AC Induction Motor Performance Data**

Record # 10413

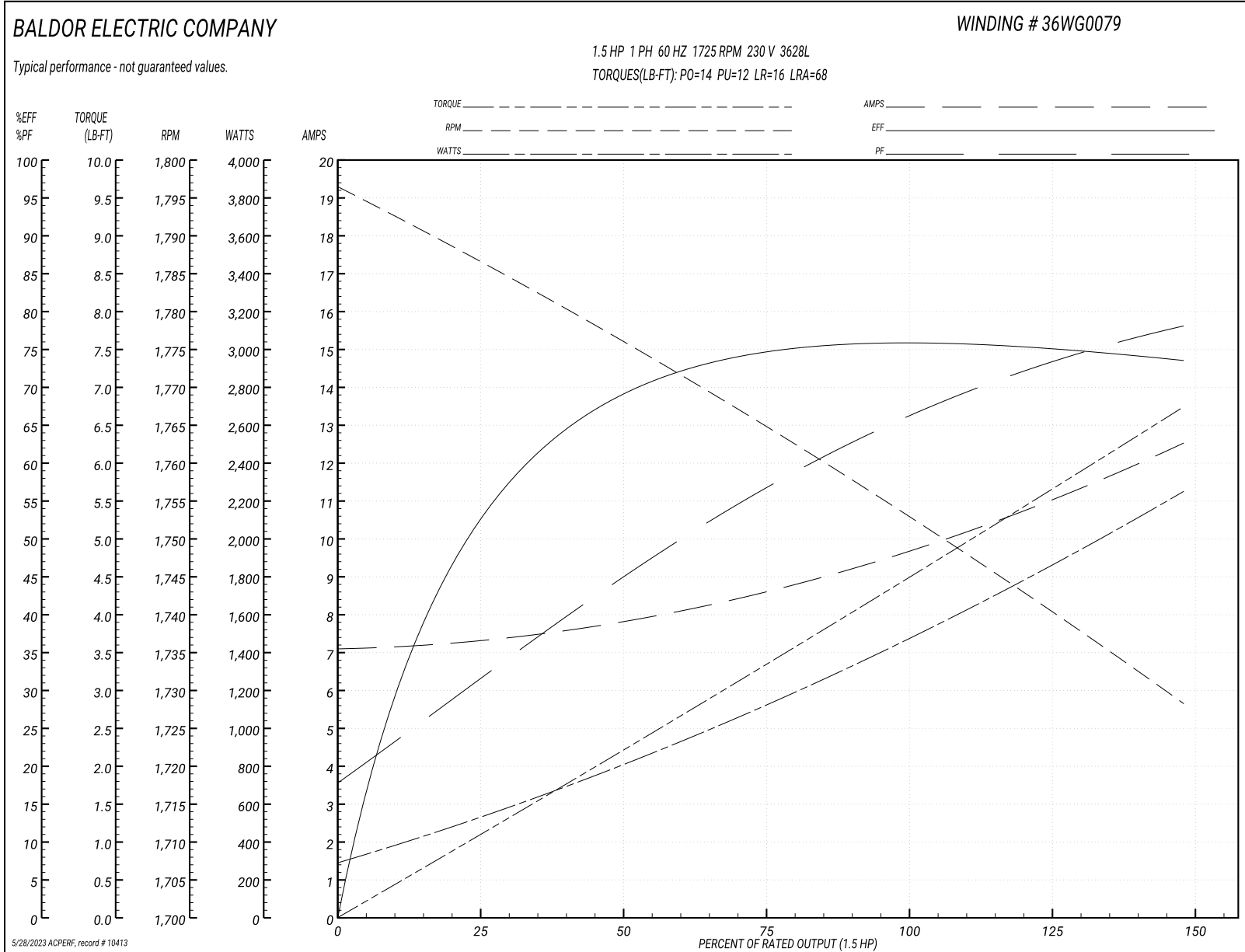
Typical performance - not guaranteed values

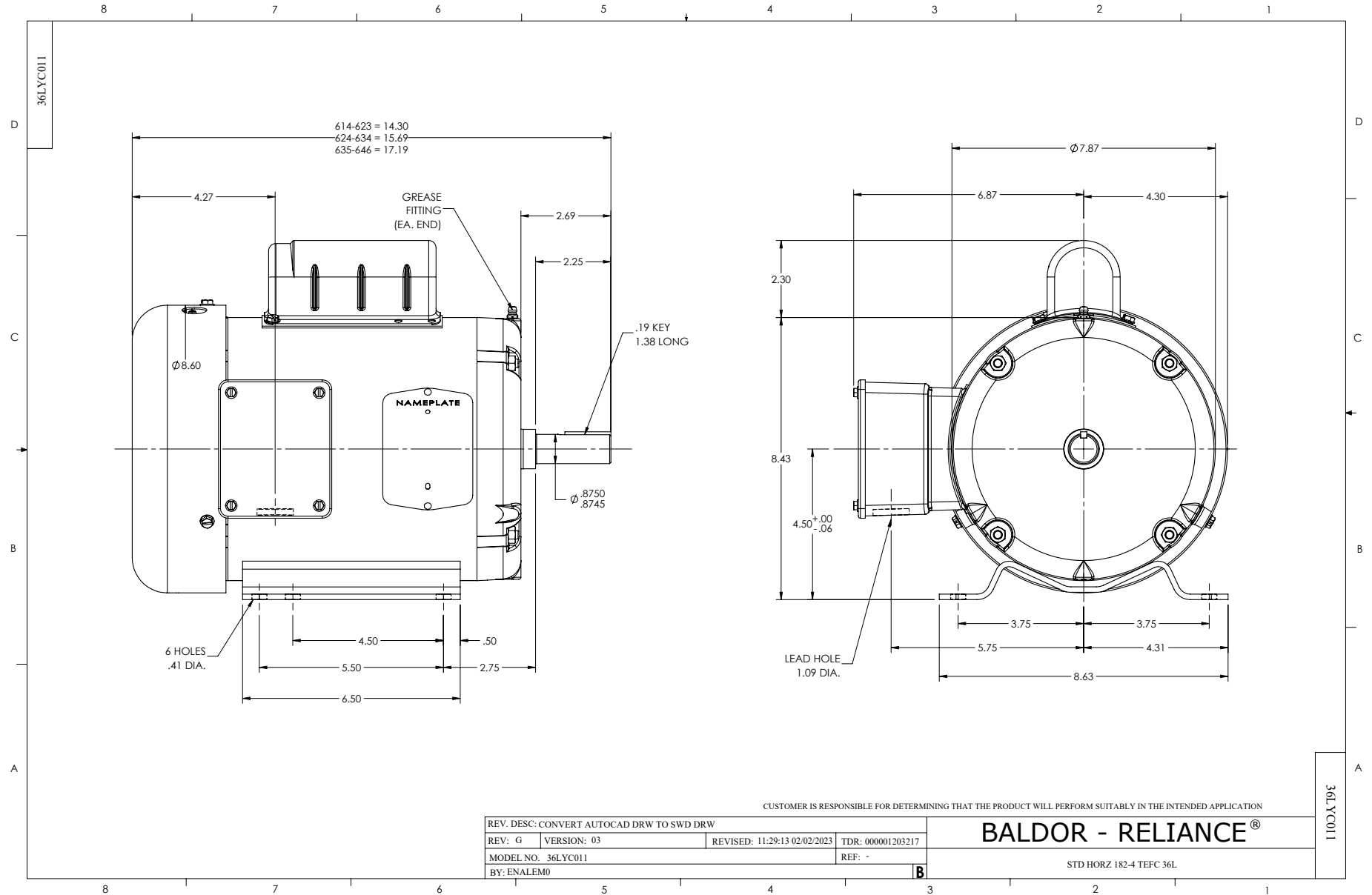
Winding: 36WG0079-R001		Type: 3628L	Enclosure: TEFC
<b>Nameplate Data</b>		<b>230 V, 60 Hz: High Voltage Connection</b>	
Rated Output (HP)	1.5	Full Load Torque	4.5 LB-FT
Volts	115/230	Start Configuration	direct on line
Full Load Amps	19/9.5	Breakdown Torque	14 LB-FT
R.P.M.	1725	Pull-up Torque	12 LB-FT
Hz	60 Phase 1	Locked-rotor Torque	16 LB-FT
NEMA Design Code	L KVA Code L	Starting Current	68 A
Service Factor (S.F.)	1.15	No-load Current	7.1 A
NEMA Nom. Eff.	70 Power Factor 70	Line-line Res. @ 25°C	1.16 Ω A Ph 0.581 Ω B Ph
Rating - Duty	40C AMB-CONT	Temp. Rise @ Rated Load	67°C
S.F. Amps		Temp. Rise @ S.F. Load	80°C

**Load Characteristics 230 V, 60 Hz, 1.5 HP**

% of Rated Load	25	50	75	100	125	150	S.F.
Power Factor	38	50	61	68	75	79	0
Efficiency	56.2	66.9	72.6	77.7	76.2	72.8	0
Speed	1784	1776	1764	1754	1742	1727	0
Line amperes	7.3	7.8	8.8	9.6	10.9	12.6	10.4

Performance Graph at 230V, 60Hz, 1.5HP Typical performance - Not guaranteed values





CD0001



NOTES:

1. STANDARD ROTATION IS CCW FACING END OPPOSITE SHAFT EXTENSION.
2. OPTIONAL THERMOSTAT IS PROVIDED WHEN SPECIFIED.
3. MULTIPLE CAPACITORS ARE CONNECTED IN PARALLEL UNLESS OTHERWISE SPECIFIED.
4. LEAD COLORS ARE OPTIONAL. LEADS MUST ALWAYS BE NUMBERED AS SHOWN.

REV. DESC: REVISE TO SHOW OPTIONAL COLORS			
REV. LTR: D	BY: JLP	REVISED: 04/08/99 1:16	TDR: 0178636
100000		FILE: AAA00007405	MDL: -
		MTL: -	

**BALDOR ELECTRIC Co.**

TYPE L, DV, REV, 6 LEADS

CD0001