

**BALDOR® • RELIANCE** 

**Product Information Packet**

**L3609T**

**3HP, 1725RPM, 1PH, 60HZ, 184T, 3634LC, TEFC, F1**

Part Detail							
Revision:	AE	Status:	PRD/A	Change #:		Proprietary:	No
Type:	AC	Elec. Spec:	36WGY129	CD Diagram:	CD0055	Mfg Plant:	
Mech. Spec:	36E004	Layout:	36LYE004	Poles:	04	Created Date:	
Base:	RG	Eff. Date:	12-09-2020	Leads:	4#14 A PH,2#16 B PH		

Specs			
Catalog Number:	L3609T	Heater Indicator:	No Heater
Enclosure:	TEFC	Insulation Class:	F
Frame:	184T	Inverter Code:	Not Inverter
Frame Material:	Steel	KVA Code:	K
Motor Letter Type:	Cap Start, Cap Run	Lifting Lugs:	No Lifting Lugs
Output @ Frequency:	3.000 HP @ 60 HZ	Locked Bearing Indicator:	No Locked Bearing
Synchronous Speed @ Frequency:	1800 RPM @ 60 HZ	Motor Lead Quantity/Wire Size:	4 @ 14 AWG, A PH
Voltage @ Frequency:	230.0 V @ 60 HZ	Motor Lead Exit:	Ko Box
	115.0 V @ 60 HZ	Motor Lead Termination:	Flying Leads
XP Class and Group:	None	Motor Type:	3634LC
XP Division:	Not Applicable	Mounting Arrangement:	F1
Agency Approvals:	CSA	Power Factor:	85
	UR	Product Family:	General Purpose
Auxillary Box:	No Auxillary Box	Pulley End Bearing Type:	Ball
Auxillary Box Lead Termination:	None	Pulley Face Code:	Standard
Base Indicator:	Rigid	Pulley Shaft Indicator:	Standard
Bearing Grease Type:	Polyrex EM (-20F +300F)	Rodent Screen:	None
Blower:	None	Shaft Extension Location:	Pulley End

<b>Current @ Voltage:</b>	15.500 A @ 208.0 V	<b>Shaft Ground Indicator:</b>	No Shaft Grounding
	28.000 A @ 115.0 V	<b>Shaft Rotation:</b>	Reversible
	14.000 A @ 230.0 V	<b>Shaft Slinger Indicator:</b>	No Slinger
<b>Design Code:</b>	L	<b>Speed Code:</b>	Single Speed
<b>Drip Cover:</b>	No Drip Cover	<b>Motor Standards:</b>	NEMA
<b>Duty Rating:</b>	CONT	<b>Starting Method:</b>	Direct on line
<b>Electrically Isolated Bearing:</b>	Not Electrically Isolated	<b>Thermal Device - Bearing:</b>	None
<b>Feedback Device:</b>	NO FEEDBACK	<b>Thermal Device - Winding:</b>	None
<b>Front Face Code:</b>	Standard	<b>Vibration Sensor Indicator:</b>	No Vibration Sensor
<b>Front Shaft Indicator:</b>	None	<b>Winding Thermal 1:</b>	None
		<b>Winding Thermal 2:</b>	None

Nameplate NP1256L										
CAT.NO.	L3609T									
SPEC.	36E04Y129									
HP	3									
VOLTS	115/230									
AMP	28/14									
RPM	1725									
FRAME	184T				HZ	60			PH	1
SER.F.	1.00		CODE	K	DES	L		CLASS	F	
NEMA-NOM-EFF	78		PF	85						
RATING	40C AMB-CONT									
CC									USABLE AT 208V	N/A
DE	6206				ODE	6205				
ENCL	TEFC		SN							

**AC Induction Motor Performance Data**

Record # 11204

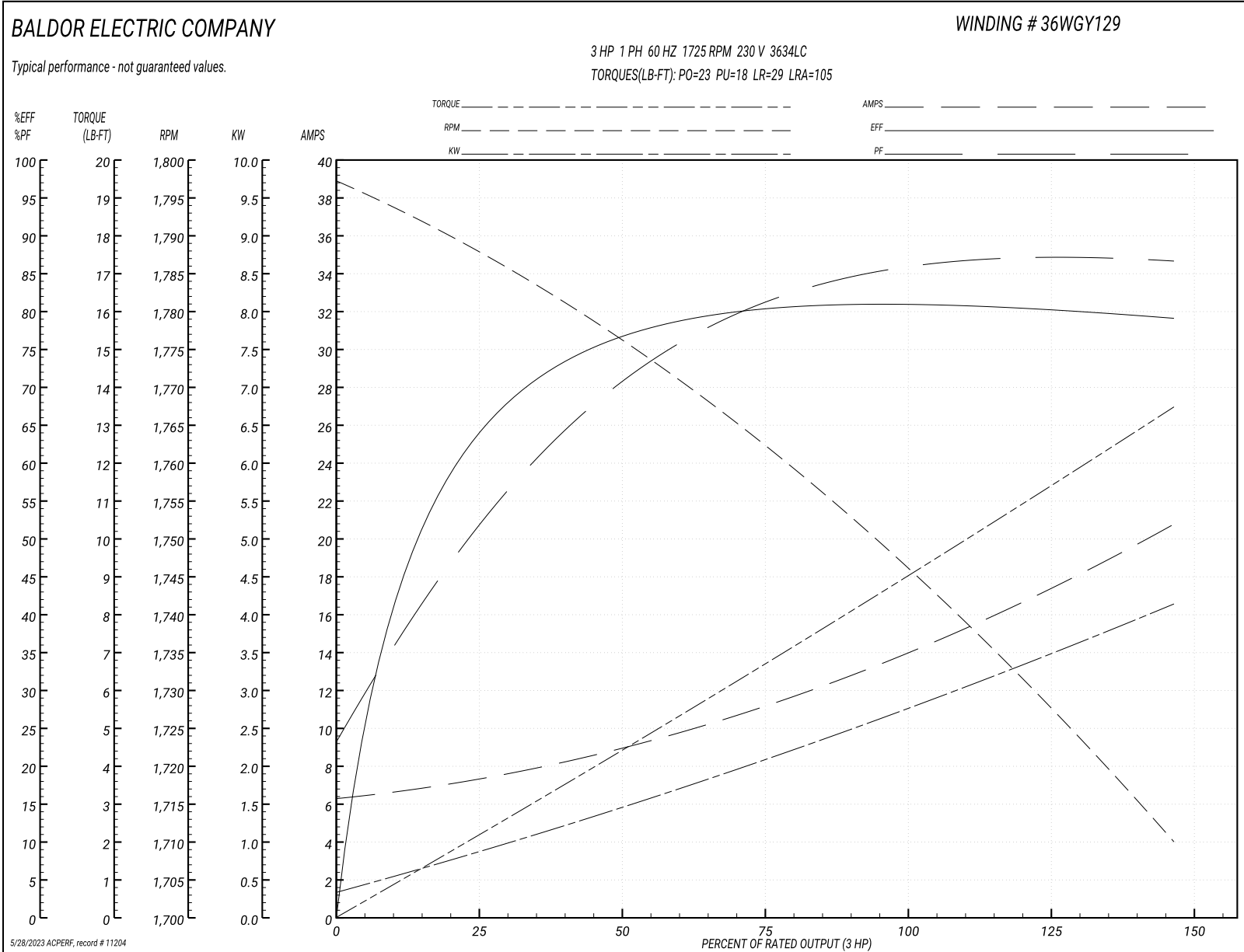
Typical performance - not guaranteed values

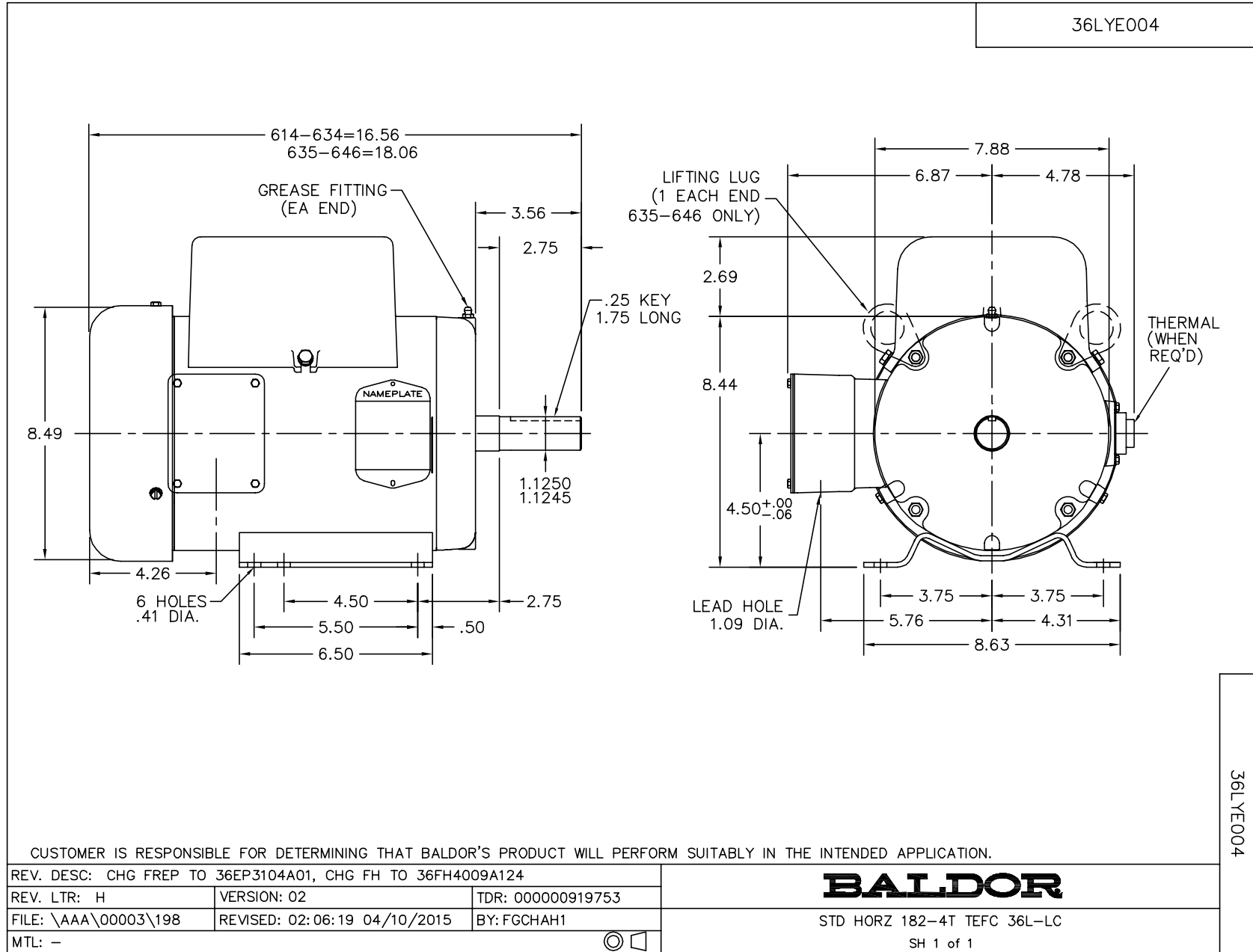
Winding: 36WGY129-R001		Type: 3634LC		Enclosure: TEFC	
<b>Nameplate Data</b>			<b>230 V, 60 Hz: High Voltage Connection</b>		
Rated Output (HP)		3	Full Load Torque		9 LB-FT
Volts		115/230	Start Configuration		direct on line
Full Load Amps		28/14	Breakdown Torque		23 LB-FT
R.P.M.		1725	Pull-up Torque		18 LB-FT
Hz	60 Phase	1	Locked-rotor Torque		29 LB-FT
NEMA Design Code	L KVA Code	K	Starting Current		105 A
Service Factor (S.F.)		1	No-load Current		6.35 A
NEMA Nom. Eff.	78 Power Factor	85	Line-line Res. @ 25°C		0.688 Ω A Ph 0.628 Ω B Ph
Rating - Duty		40C AMB-CONT	Temp. Rise @ Rated Load		86°C

**Load Characteristics 230 V, 60 Hz, 3 HP**

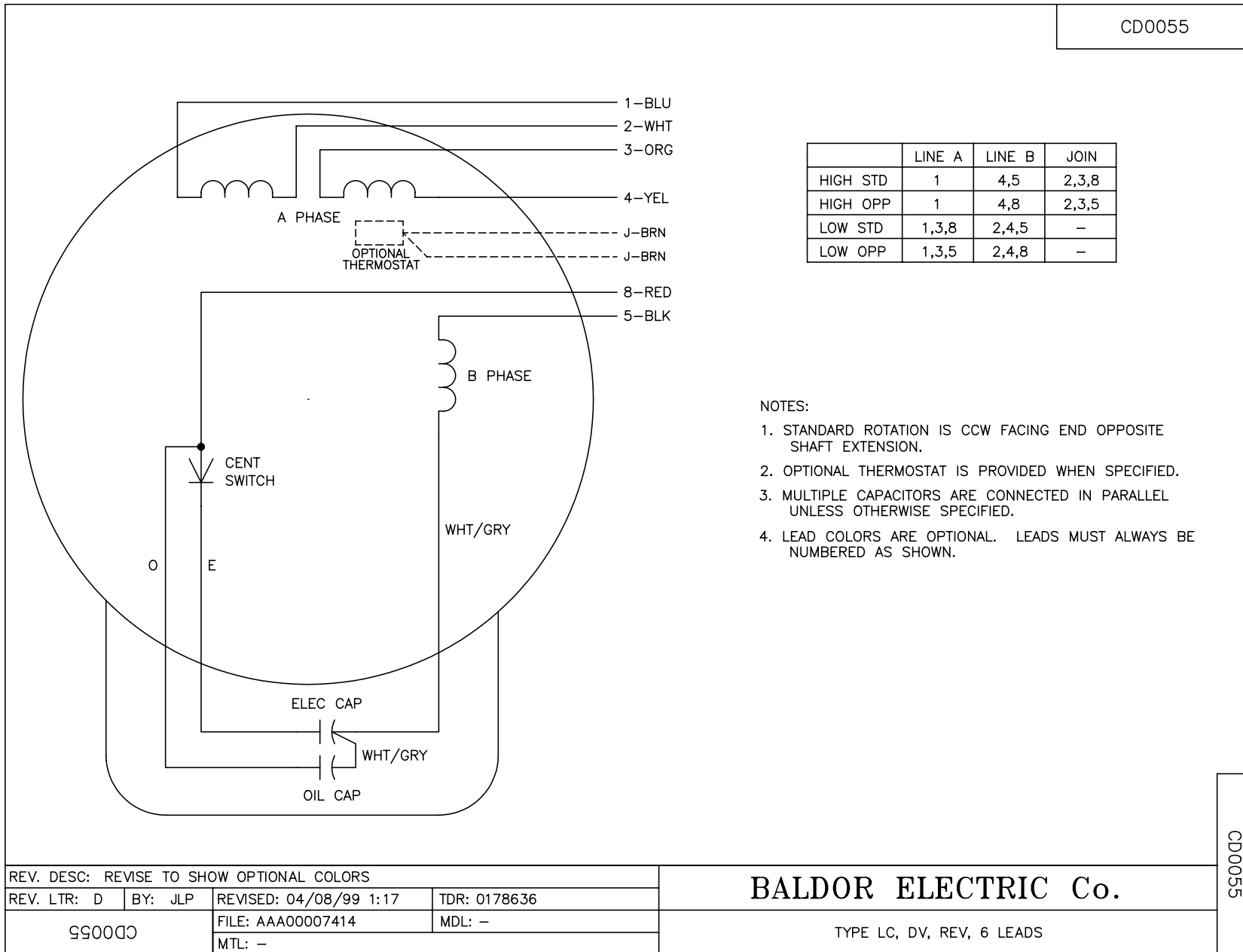
% of Rated Load	25	50	75	100	125	150
Power Factor	53	71	81	86	88	89
Efficiency	63.3	76.2	80.4	81.4	80.7	78.8
Speed	1787	1775	1762	1747	1730	1709
Line amperes	7.25	9	11.3	14	17.1	20.8

Performance Graph at 230V, 60Hz, 3.0HP Typical performance - Not guaranteed values





CD0055



REV. DESC: REVISE TO SHOW OPTIONAL COLORS			
REV. LTR: D	BY: JLP	REVISED: 04/08/99 1:17	TDR: 0178636
990000		FILE: AAA00007414	MDL: -
		MTL: -	

**BALDOR ELECTRIC Co.**

TYPE LC, DV, REV, 6 LEADS

CD0055