

BALDOR[®] • RELIANCE 

Product Information Packet

M1010T

10/2.5HP, 1730/860RPM, 3PH, 60HZ, 213T, 3742M

Part Detail							
Revision:	-	Status:	PRD/A	Change #:		Proprietary:	No
Type:	AC	Elec. Spec:	37WGZ659	CD Diagram:	CD0032	Mfg Plant:	
Mech. Spec:	37B001	Layout:	37LYB001	Poles:	04/08	Created Date:	12-14-2020
Base:	RG	Eff. Date:	12-18-2020	Leads:	6#10		

Specs			
Catalog Number:	M1010T	Inverter Code:	Not Inverter
Enclosure:	OPEN	IP Rating:	NONE
Frame:	213T	KVA Code:	H
Frame Material:	Steel	Lifting Lugs:	Standard Lifting Lugs
Output @ Frequency:	10.000 HP @ 60 HZ	Locked Bearing Indicator:	No Locked Bearing
	2.500 HP @ 60 HZ	Motor Lead Quantity/Wire Size:	6 @ 10 AWG
Synchronous Speed @ Frequency:	1800 RPM @ 60 HZ	Motor Lead Exit:	Ko Box
Voltage @ Frequency:	230.0 V @ 60 HZ	Motor Lead Termination:	Flying Leads
XP Class and Group:	None	Motor Type:	3742M
XP Division:	Not Applicable	Mounting Arrangement:	F1
Agency Approvals:	UR	Product Family:	General Purpose
	CSA	Pulley End Bearing Type:	Ball
Auxillary Box:	No Auxillary Box	Pulley Face Code:	Standard
Auxillary Box Lead Termination:	None	Pulley Shaft Indicator:	Standard
Base Indicator:	Rigid	Rodent Screen:	None
Bearing Grease Type:	Polyrex EM (-20F +300F)	Shaft Extension Location:	Pulley End
Blower:	None	Shaft Ground Indicator:	No Shaft Grounding
Current @ Voltage:	24.400 A @ 230.0 V	Shaft Rotation:	Reversible

Design Code:	B	Shaft Slinger Indicator:	No Slinger
Drip Cover:	No Drip Cover	Speed Code:	2S-1W-VT
Duty Rating:	CONT	Motor Standards:	NEMA
Electrically Isolated Bearing:	Not Electrically Isolated	Starting Method:	Direct on line
Feedback Device:	NO FEEDBACK	Thermal Device - Bearing:	None
Front Face Code:	Standard	Thermal Device - Winding:	None
Front Shaft Indicator:	None	Vibration Sensor Indicator:	No Vibration Sensor
Heater Indicator:	No Heater	Winding Thermal 1:	None
Insulation Class:	F	Winding Thermal 2:	None

Nameplate NP1256L										
CAT.NO.	M1010T									
SPEC.	37B001Z659									
HP	10/2.5									
VOLTS	230									
AMP	24.4/9.2									
RPM	1730/860									
FRAME	213T				HZ	60			PH	3
SER.F.	1.00		CODE	H	DES	B		CLASS	F	
NEMA-NOM-EFF			PF							
RATING	40C AMB-CONT									
CC					USABLE AT 208V					
DE	6307				ODE	6206				
ENCL	OPEN		SN							

AC Induction Motor Performance Data

Record # 85836

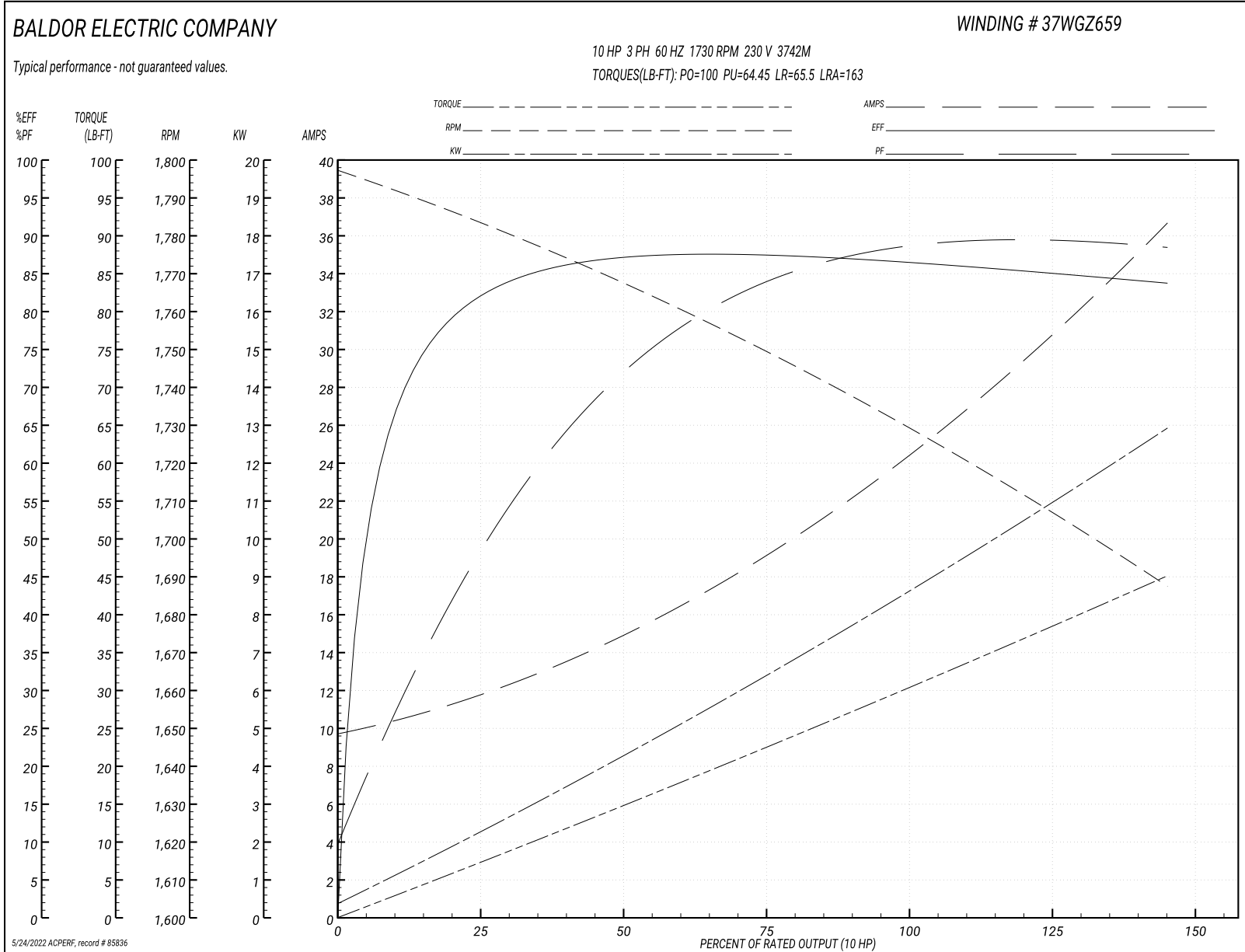
Typical performance - not guaranteed values

Winding: 37WGZ659-R001			Type: 3742M	Enclosure: TEFC		
Nameplate Data			230 V, 60 Hz: High Speed Connection			
Rated Output (HP)	10/2.5		Full Load Torque	30.05 LB-FT		
Volts	230		Start Configuration	direct on line		
Full Load Amps	24.4/9.2		Breakdown Torque	100 LB-FT		
R.P.M.	1730/860		Pull-up Torque	64.45 LB-FT		
Hz	60 Phase	3	Locked-rotor Torque	65.5 LB-FT		
NEMA Design Code	B KVA Code	H	Starting Current	163 A		
Service Factor (S.F.)	1		No-load Current	9.94 A		
NEMA Nom. Eff.	0 Power Factor	0	Line-line Res. @ 25°C	0.411 Ω		
Rating - Duty	40C AMB-CONT		Temp. Rise @ Rated Load	69°C		
			Locked-rotor Power Factor	51.9		
			Rotor inertia	1.03 lb-ft ²		

Load Characteristics 230 V, 60 Hz, 10 HP

% of Rated Load	25	50	75	100	125	150
Power Factor	51	73	83	88	90	89
Efficiency	81.2	86.7	87.5	86.7	85.5	83.5
Speed	1782	1767	1750	1730	1710	1687
Line amperes	11.47	14.88	19.35	24.41	29.92	36.66

Performance Graph at 230V, 60Hz, 10.0HP Typical performance - Not guaranteed values



AC Induction Motor Performance Data

Record # 85839

Typical performance - not guaranteed values

Winding: 37WGZ659-R001		Type: 3742M		Enclosure: TEFC	
Nameplate Data			230 V, 60 Hz: Low Speed Connection		
Rated Output (HP)	10/2.5	Full Load Torque	15.29 LB-FT		
Volts	230	Start Configuration	direct on line		
Full Load Amps	24.4/9.2	Breakdown Torque	44.24 LB-FT		
R.P.M.	1730/860	Pull-up Torque	26.04 LB-FT		
Hz	60 Phase	3	Locked-rotor Torque	28.52 LB-FT	
NEMA Design Code	B KVA Code	H	Starting Current	37.85 A	
Service Factor (S.F.)		1	No-load Current	3.58 A	
NEMA Nom. Eff.	0 Power Factor	0	Line-line Res. @ 25°C	1.64 Ω	
Rating - Duty	40C AMB-CONT		Temp. Rise @ Rated Load	50°C	
			Locked-rotor Power Factor	46.3	
			Rotor inertia	1.03 lb-ft ²	

Load Characteristics 230 V, 60 Hz, 2.5 HP

% of Rated Load	25	50	75	100	125	150
Power Factor	27	43	55	64	69	73
Efficiency	64.2	75.6	79	79.7	78.9	77.2
Speed	889	880	869	858	845	830
Line amperes	6.88	7.44	8.19	9.15	10.53	12.14

Performance Graph at 230V, 60Hz, 2.5HP Typical performance - Not guaranteed values

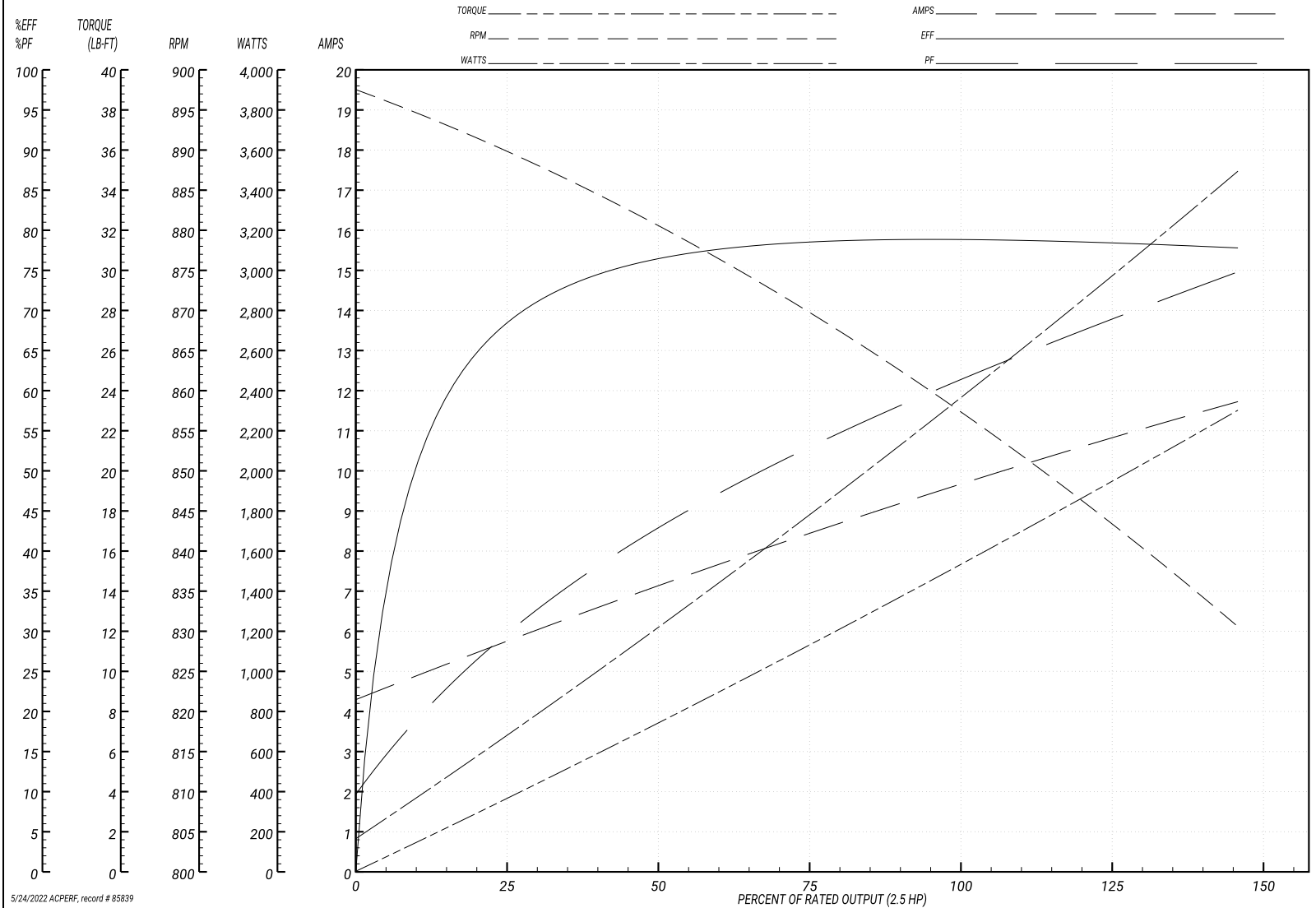
BALDOR ELECTRIC COMPANY

WINDING # 37WGZ659

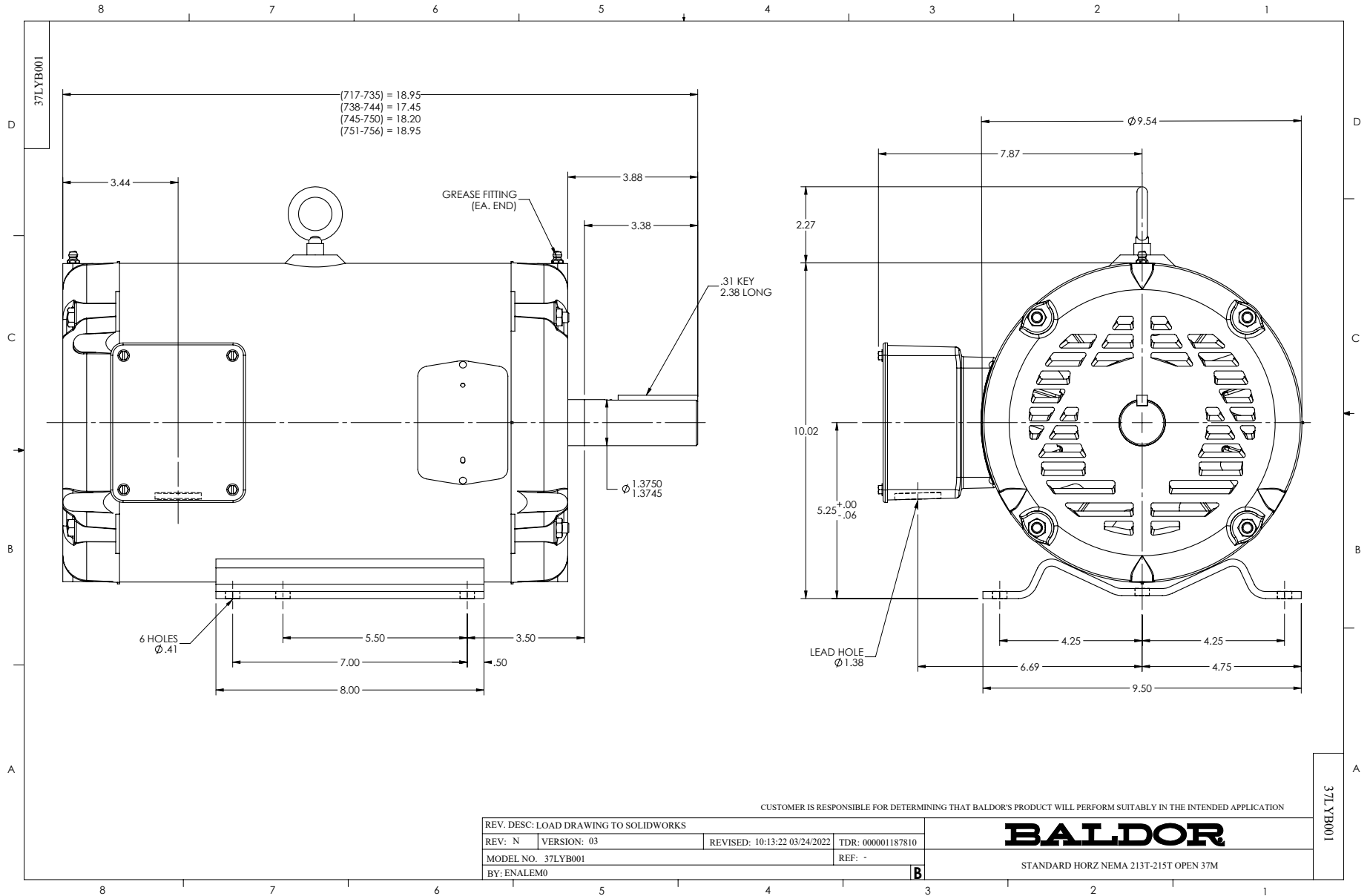
Typical performance - not guaranteed values.

2.5 HP 3 PH 60 HZ 858 RPM 230 V 3742M

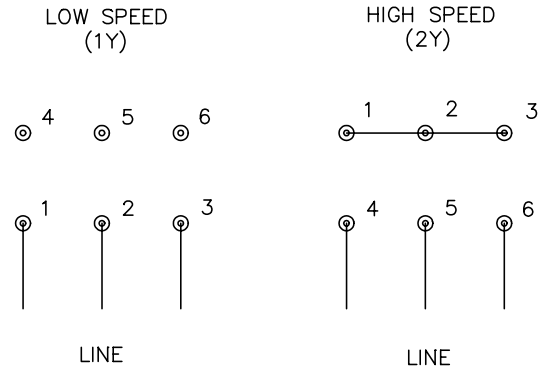
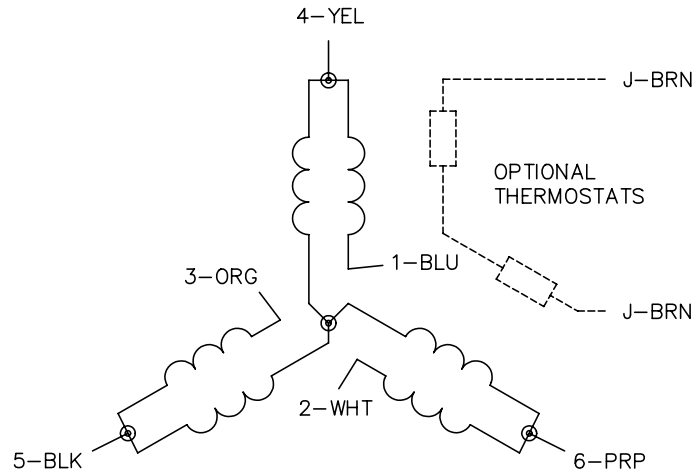
TORQUES(LB-FT): PO=44.24 PU=26.04 LR=28.52 LRA=37.85



5/24/2022 ACPERF, record # 85839



CD0032



NOTES:

1. INTERCHANGE ANY TWO LINE LEADS TO REVERSE ROTATION.
2. OPTIONAL THERMOSTATS ARE PROVIDED WHEN SPECIFIED.
3. ACTUAL NUMBER OF INTERNAL PARALLEL CIRCUITS MAY BE A MULTIPLE OF THOSE SHOWN ABOVE.
4. LEAD COLORS ARE OPTIONAL. LEADS MUST ALWAYS BE NUMBERED AS SHOWN.

REV. DESC: REVISE TO SHOW OPTIONAL COLORS			
REV. LTR: E	BY: JLP	REVISED: 01/22/99 8:27	TDR: 0171435
CD0032		FILE: AAA00005145	MDL: -
		MTL: -	

BALDOR ELECTRIC Co.

3PH, SV, 6 LEADS, 2-SPEED 1-WINDING VARIABLE TORQUE

CD0032