

BALDOR® • RELIANCE 

Product Information Packet

M1224T

5/2.2HP, 1725/1140RPM, 3PH, 60HZ, 215T, 3735M

Part Detail							
Revision:	AE	Status:	PRD/A	Change #:		Proprietary:	No
Type:	AC	Elec. Spec:	37WG023	CD Diagram:	CD0013	Mfg Plant:	
Mech. Spec:	37B001	Layout:	37LYB001	Poles:	04/06	Created Date:	
Base:	RG	Eff. Date:	02-11-2022	Leads:	6#14		

Specs			
Catalog Number:	M1224T	Inverter Code:	Not Inverter
Enclosure:	OPEN	IP Rating:	NONE
Frame:	215T	KVA Code:	J
Frame Material:	Steel	Lifting Lugs:	Standard Lifting Lugs
Output @ Frequency:	2.200 HP @ 60 HZ	Locked Bearing Indicator:	No Locked Bearing
	5.000 HP @ 60 HZ	Motor Lead Quantity/Wire Size:	6 @ 14 AWG
Synchronous Speed @ Frequency:	1200 RPM @ 60 HZ	Motor Lead Exit:	Ko Box
Voltage @ Frequency:	460.0 V @ 60 HZ	Motor Lead Termination:	Flying Leads
XP Class and Group:	None	Motor Type:	3735M
XP Division:	Not Applicable	Mounting Arrangement:	F1
Agency Approvals:	UR	Product Family:	General Purpose
	CSA	Pulley End Bearing Type:	Ball
Auxillary Box:	No Auxillary Box	Pulley Face Code:	Standard
Auxillary Box Lead Termination:	None	Pulley Shaft Indicator:	Standard
Base Indicator:	Rigid	Rodent Screen:	None
Bearing Grease Type:	Polyrex EM (-20F +300F)	Shaft Extension Location:	Pulley End
Blower:	None	Shaft Ground Indicator:	No Shaft Grounding
Current @ Voltage:	6.400 A @ 460.0 V	Shaft Rotation:	Reversible

Design Code:	B	Shaft Slinger Indicator:	No Slinger
Drip Cover:	No Drip Cover	Speed Code:	2S-2W-VT
Duty Rating:	CONT	Motor Standards:	NEMA
Electrically Isolated Bearing:	Not Electrically Isolated	Starting Method:	Direct on line
Feedback Device:	NO FEEDBACK	Thermal Device - Bearing:	None
Front Face Code:	Standard	Thermal Device - Winding:	None
Front Shaft Indicator:	None	Vibration Sensor Indicator:	No Vibration Sensor
Heater Indicator:	No Heater	Winding Thermal 1:	None
Insulation Class:	F	Winding Thermal 2:	None

Nameplate NP1256L										
CAT.NO.	M1224T									
SPEC.	37B01W23									
HP	5/2.2									
VOLTS	460									
AMP	6.4/3.5									
RPM	1725/1140									
FRAME	215T				HZ	60			PH	3
SER.F.	1.15		CODE	J	DES	B		CLASS	F	
NEMA-NOM-EFF			PF							
RATING	40C AMB-CONT									
CC	USABLE AT 208V									
DE	6307				ODE	6206				
ENCL	OPEN		SN							

AC Induction Motor Performance Data

Record # 37310

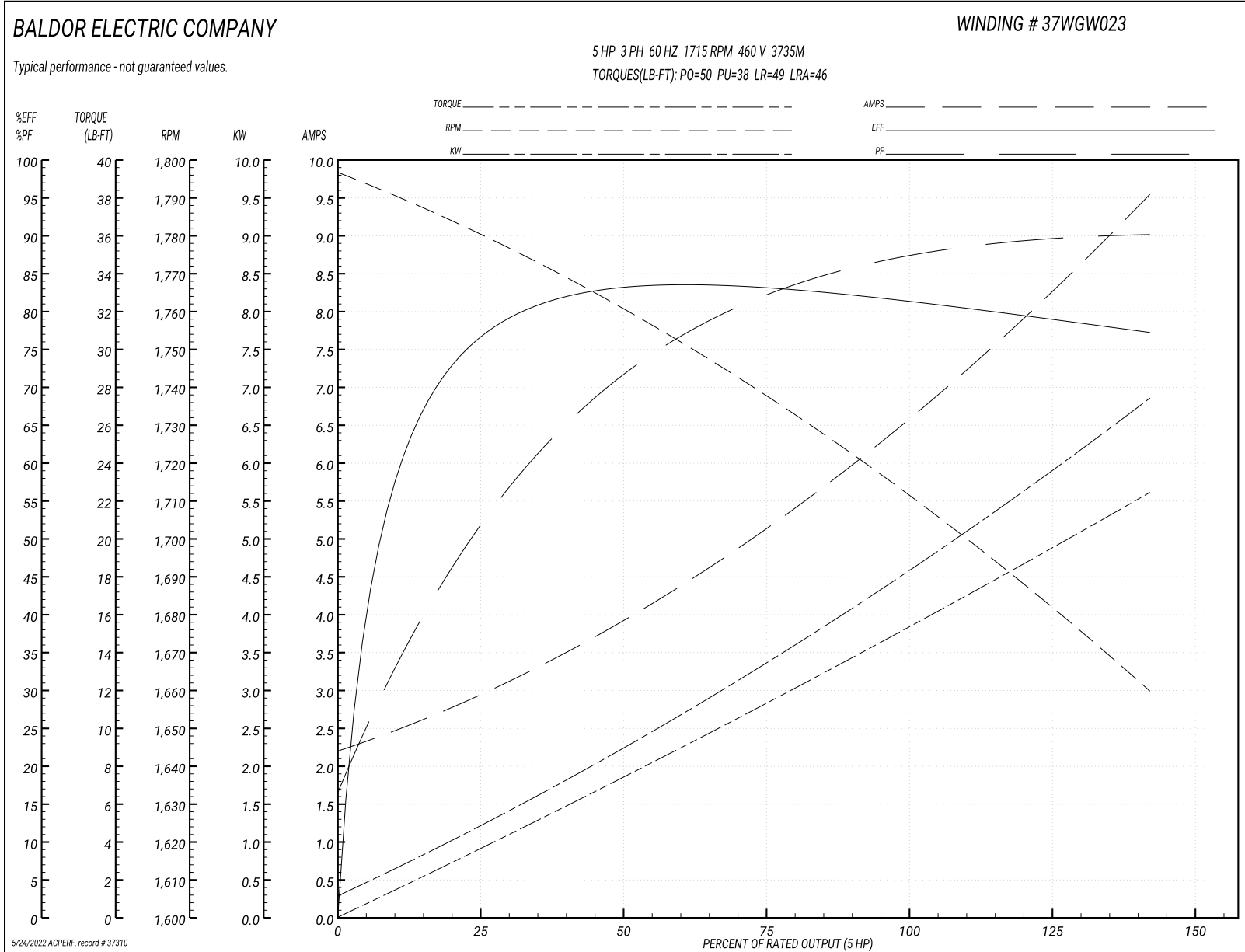
Typical performance - not guaranteed values

Winding: 37WGW023-R002		Type: 3735M		Enclosure: OPEN	
Nameplate Data			460 V, 60 Hz: High Speed Connection		
Rated Output (HP)	5/2.2	Full Load Torque	15 LB-FT		
Volts	460	Start Configuration	direct on line		
Full Load Amps	6.4/3.5	Breakdown Torque	50 LB-FT		
R.P.M.	1725/1140	Pull-up Torque	38 LB-FT		
Hz	60 Phase	3	Locked-rotor Torque	49 LB-FT	
NEMA Design Code	B KVA Code	J	Starting Current	46 A	
Service Factor (S.F.)		1.15	No-load Current	2.3 A	
NEMA Nom. Eff.	0 Power Factor	0	Line-line Res. @ 25°C	4.21 Ω	
Rating - Duty		40C AMB-CONT	Temp. Rise @ Rated Load	57°C	
S.F. Amps			Temp. Rise @ S.F. Load	70°C	

Load Characteristics 460 V, 60 Hz, 5 HP

% of Rated Load	25	50	75	100	125	150	S.F.
Power Factor	56	73	81	86	88	91	87
Efficiency	76.3	82.4	83.2	81.6	80	76.9	80.6
Speed	1779	1759	1738	1715	1689	1658	1699
Line amperes	2.8	3.9	5.2	6.5	8	9.5	7.4

Performance Graph at 460V, 60Hz, 5.0HP Typical performance - Not guaranteed values



AC Induction Motor Performance Data

Record # 37311

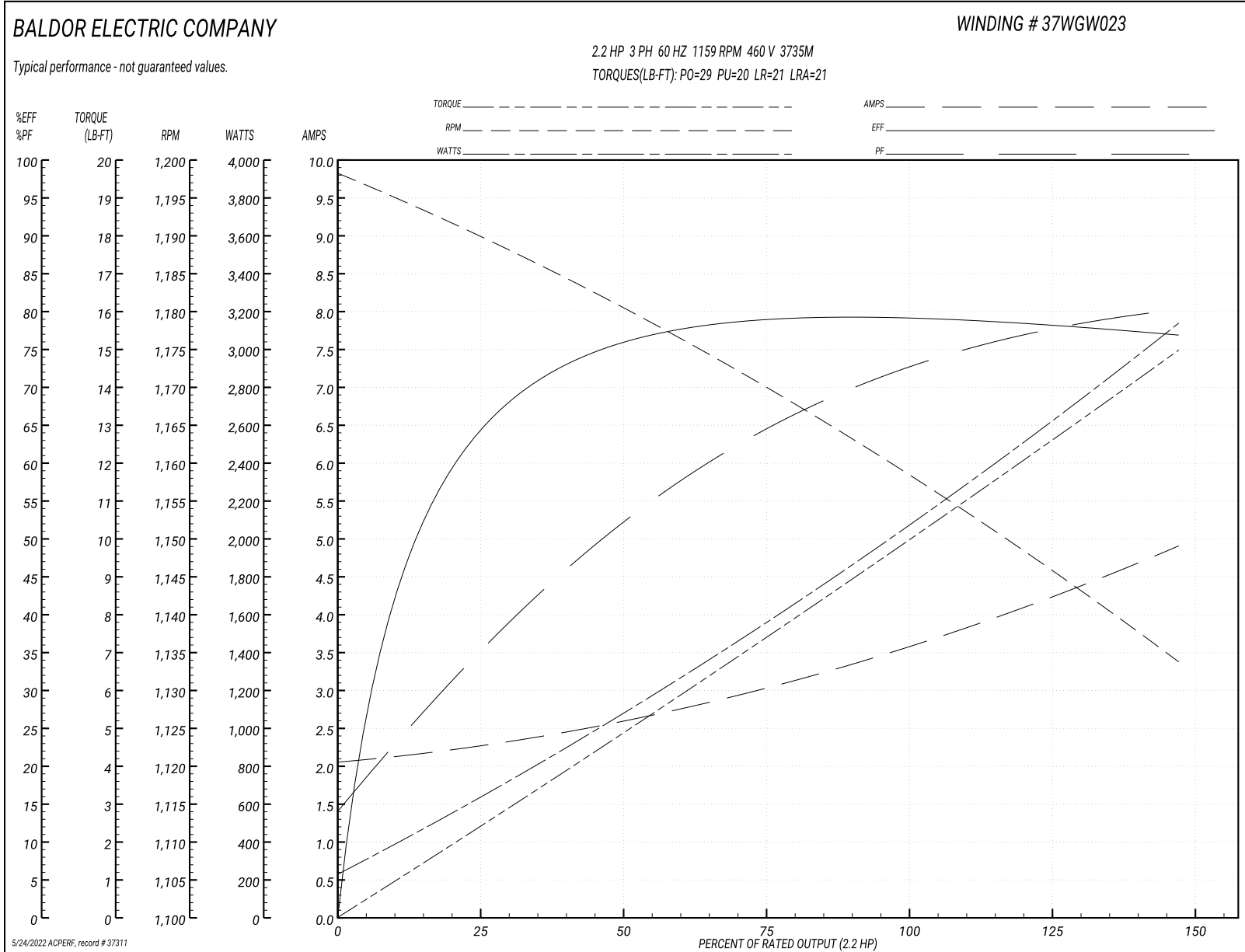
Typical performance - not guaranteed values

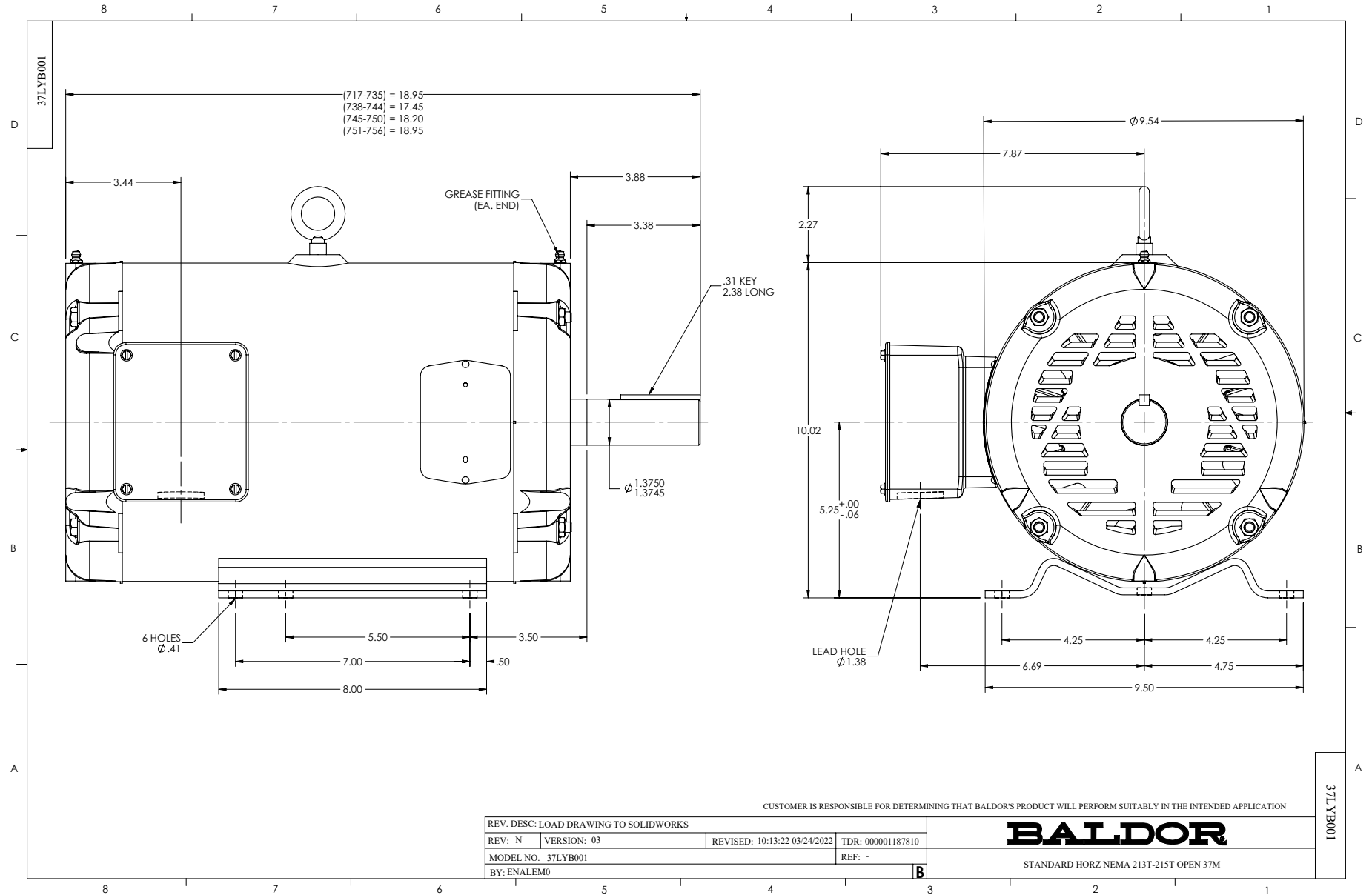
Winding: 37WGW023-R002		Type: 3735M		Enclosure: OPEN	
Nameplate Data			460 V, 60 Hz: Low Speed Connection		
Rated Output (HP)	5/2.2	Full Load Torque	10 LB-FT		
Volts	460	Start Configuration	direct on line		
Full Load Amps	6.4/3.5	Breakdown Torque	29 LB-FT		
R.P.M.	1725/1140	Pull-up Torque	20 LB-FT		
Hz	60 Phase	3	Locked-rotor Torque	21 LB-FT	
NEMA Design Code	B	KVA Code	J	Starting Current	21 A
Service Factor (S.F.)	1.15		No-load Current	2.1 A	
NEMA Nom. Eff.	0	Power Factor	0	Line-line Res. @ 25°C	8.36 Ω
Rating - Duty	40C AMB-CONT		Temp. Rise @ Rated Load	33°C	
S.F. Amps			Temp. Rise @ S.F. Load	39°C	

Load Characteristics 460 V, 60 Hz, 2.2 HP

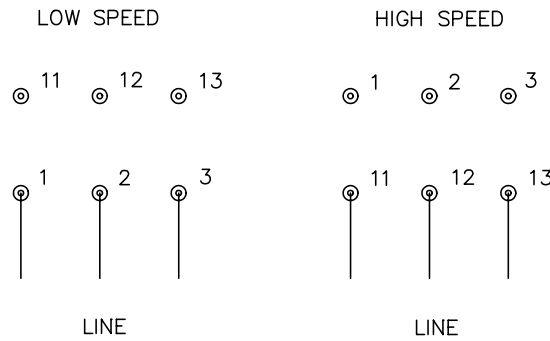
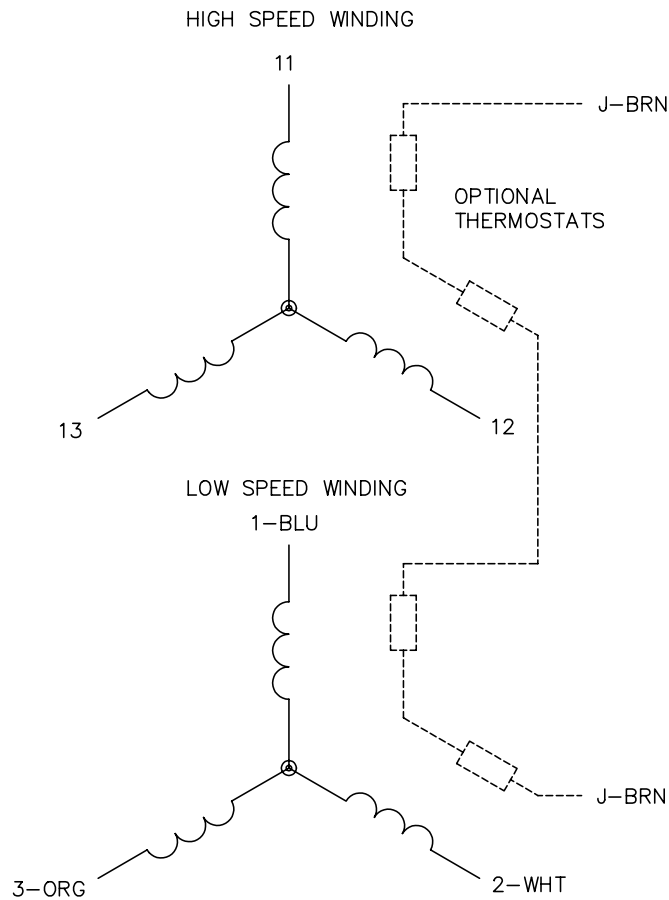
% of Rated Load	25	50	75	100	125	150	S.F.
Power Factor	37	53	64	73	78	81	76
Efficiency	65.9	76.2	78.6	79.1	78.5	76.8	78.7
Speed	1189	1179	1170	1159	1147	1133	1152
Line amperes	2.2	2.6	3.1	3.6	4.2	4.9	3.96

Performance Graph at 460V, 60Hz, 2.2HP Typical performance - Not guaranteed values





CD0013



NOTES:

1. INTERCHANGE ANY TWO LINE LEADS TO REVERSE ROTATION.
2. OPTIONAL THERMOSTATS ARE PROVIDED WHEN SPECIFIED.
3. ACTUAL NUMBER OF INTERNAL PARALLEL CIRCUITS MAY VARY.
4. LEAD COLORS ARE OPTIONAL. LEADS MUST ALWAYS BE NUMBERED AS SHOWN.

REV. DESC: REVISE TO SHOW OPTIONAL COLORS			
REV. LTR: D	BY: JLP	REVISED: 01/22/99 8:50	TDR: 0171435
Ω10003		FILE: AAA00005143	MDL: -
		MTL: -	

BALDOR ELECTRIC Co.

3PH, SV, 6 LEADS, 2-SPEED 2-WINDING

CD0013