

BALDOR® • RELIANCE 

Product Information Packet

M1227T

15/6.7HP, 1760/1160RPM, 3PH, 60HZ, 284T, 4040

Part Detail							
Revision:	L	Status:	PRD/A	Change #:		Proprietary:	No
Type:	AC	Elec. Spec:	40WGX175	CD Diagram:	CD0013	Mfg Plant:	
Mech. Spec:	40D101	Layout:	40LYD101	Poles:	04/06	Created Date:	02-12-2010
Base:	RG	Eff. Date:	03-10-2021	Leads:	6#10		

Specs			
Catalog Number:	M1227T	Inverter Code:	Not Inverter
Enclosure:	OPSB	KVA Code:	G
Frame:	284T	Lifting Lugs:	Standard Lifting Lugs
Frame Material:	Steel	Locked Bearing Indicator:	No Locked Bearing
Output @ Frequency:	15.000 HP @ 60 HZ	Motor Lead Quantity/Wire Size:	6 @ 10 AWG
	6.700 HP @ 60 HZ	Motor Lead Exit:	Ko Box
Synchronous Speed @ Frequency:	1200 RPM @ 60 HZ	Motor Lead Termination:	Flying Leads
Voltage @ Frequency:	460.0 V @ 60 HZ	Motor Type:	4040M
Agency Approvals:	CSA	Mounting Arrangement:	F1
	UR	Product Family:	General Purpose
Auxillary Box:	No Auxillary Box	Pulley End Bearing Type:	Ball
Auxillary Box Lead Termination:	None	Pulley Face Code:	Standard
Base Indicator:	Rigid	Pulley Shaft Indicator:	Standard
Bearing Grease Type:	Polyrex EM (-20F +300F)	Rodent Screen:	None
Blower:	None	Shaft Extension Location:	Pulley End
Current @ Voltage:	17.900 A @ 460.0 V	Shaft Ground Indicator:	No Shaft Grounding
Design Code:	B	Shaft Rotation:	Reversible
Drip Cover:	No Drip Cover	Shaft Slinger Indicator:	No Slinger

Duty Rating:	CONT	Speed Code:	2S-2W-VT
Electrically Isolated Bearing:	Not Electrically Isolated	Motor Standards:	NEMA
Feedback Device:	NO FEEDBACK	Starting Method:	Direct on line
Front Face Code:	Standard	Thermal Device - Bearing:	None
Front Shaft Indicator:	None	Thermal Device - Winding:	None
Heater Indicator:	No Heater	Vibration Sensor Indicator:	No Vibration Sensor
Insulation Class:	F	Winding Thermal 1:	None
		Winding Thermal 2:	None

Nameplate NP1256L										
CAT.NO.	M1227T									
SPEC.	40D101X175									
HP	15/6.7									
VOLTS	460									
AMP	17.9/11.5									
RPM	1740/1180									
FRAME	284T				HZ	60			PH	3
SER.F.	1.15		CODE	G	DES	B		CLASS	F	
NEMA-NOM-EFF			PF							
RATING	40C AMB-CONT									
CC									USABLE AT 208V	
DE	6311				ODE	6309				
ENCL	OPSB		SN							

AC Induction Motor Performance Data

Record # 57716

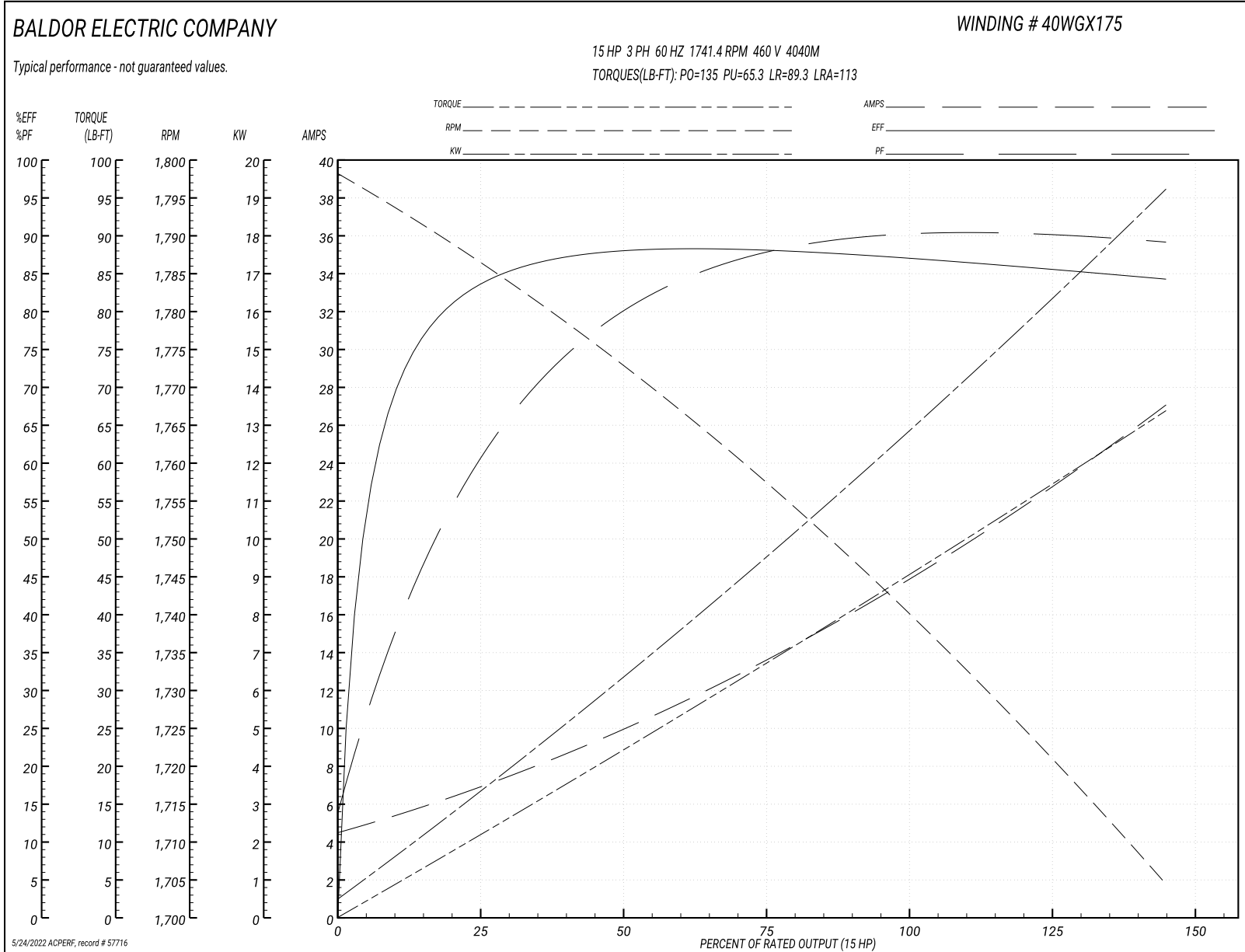
Typical performance - not guaranteed values

Winding: 40WGX175-R001		Type: 4040M		Enclosure: OPEN	
Nameplate Data			460 V, 60 Hz: High Speed Connection		
Rated Output (HP)	15/6.7	Full Load Torque	45 LB-FT		
Volts	460	Start Configuration	direct on line		
Full Load Amps	18.1/12.6	Breakdown Torque	135 LB-FT		
R.P.M.	1760/1160	Pull-up Torque	65.3 LB-FT		
Hz	60 Phase	3	Locked-rotor Torque	89.3 LB-FT	
NEMA Design Code	A KVA Code	H	Starting Current	113 A	
Service Factor (S.F.)	1.15		No-load Current	4.7 A	
NEMA Nom. Eff.	0 Power Factor	0	Line-line Res. @ 25°C	1.0251 Ω	
Rating - Duty	40C AMB-CONT		Temp. Rise @ Rated Load	38°C	
S.F. Amps			Temp. Rise @ S.F. Load	46°C	
			Locked-rotor Power Factor	39.1	

Load Characteristics 460 V, 60 Hz, 15 HP

% of Rated Load	25	50	75	100	125	150	S.F.
Power Factor	65	82	87	89	90	89	90
Efficiency	83.3	87.6	88.2	87.3	86.1	84.1	86.6
Speed	1785.3	1771.7	1757.2	1741.4	1724.2	1703.4	1731
Line amperes	6.68	9.96	13.8	17.9	22.2	27	20.5

Performance Graph at 460V, 60Hz, 15.0HP Typical performance - Not guaranteed values



AC Induction Motor Performance Data

Record # 57717

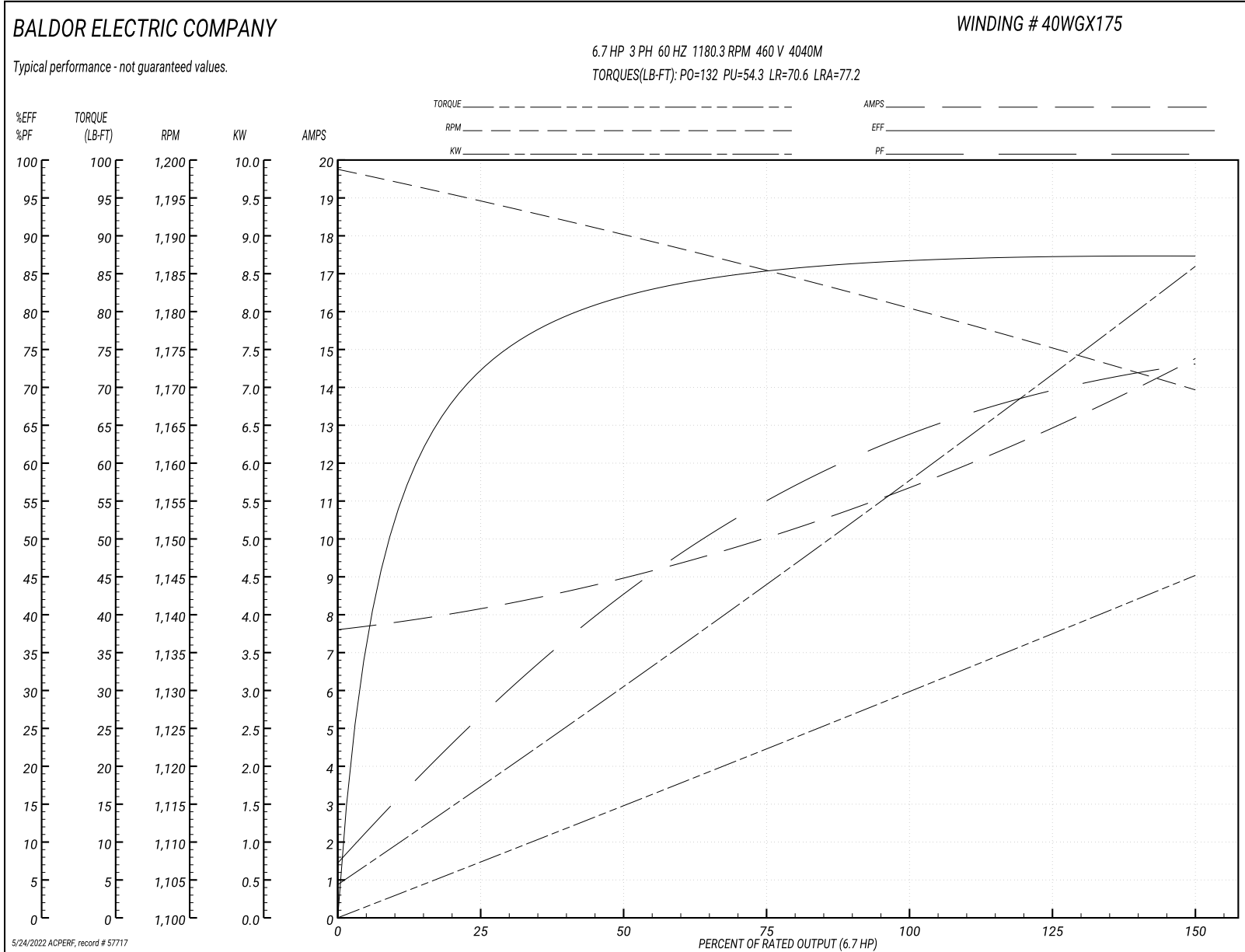
Typical performance - not guaranteed values

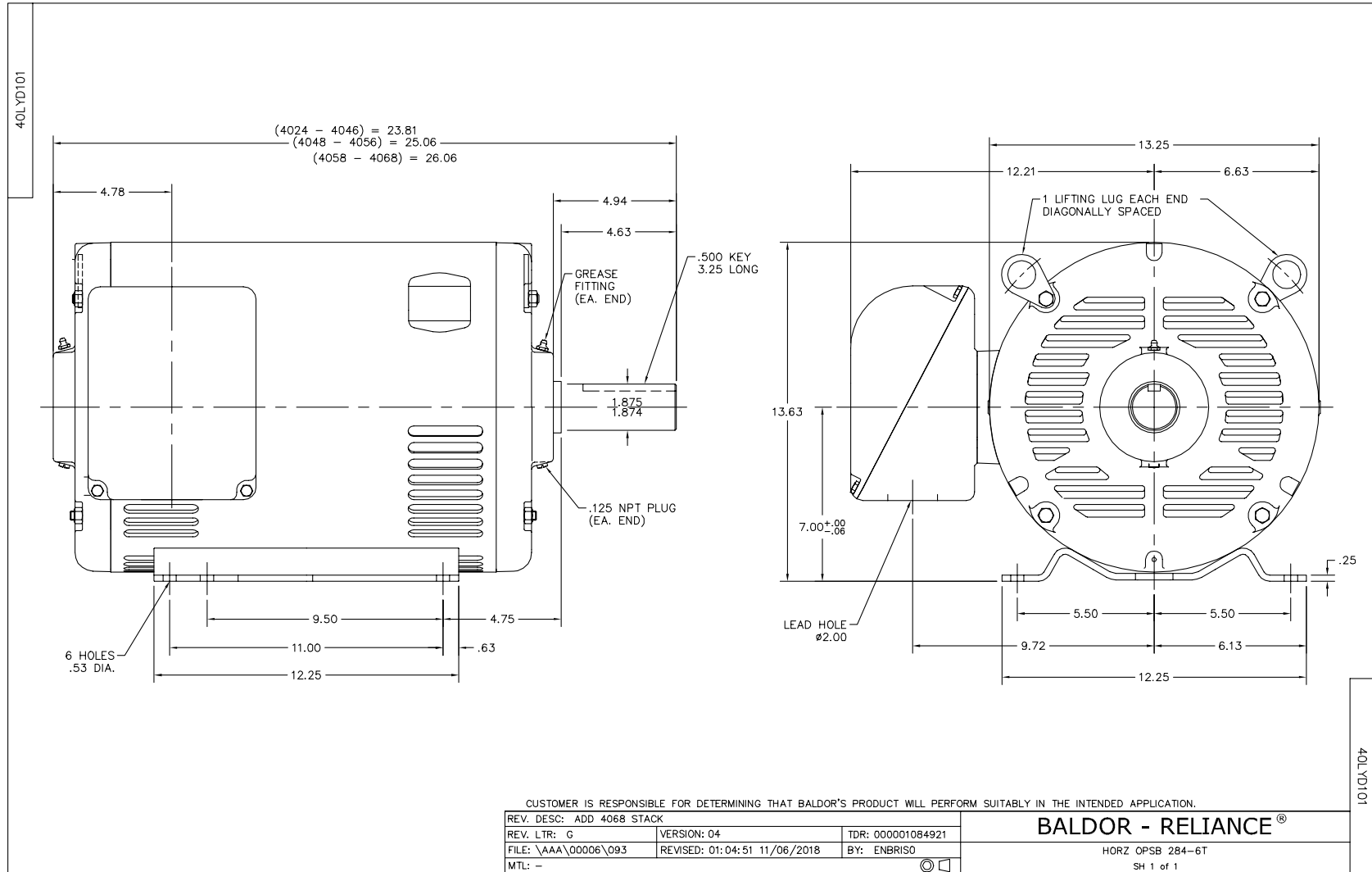
Winding: 40WGX175-R001			Type: 4040M	Enclosure: OPEN		
Nameplate Data				460 V, 60 Hz: Low Speed Connection		
Rated Output (HP)	15/6.7		Full Load Torque	30.5 LB-FT		
Volts	460		Start Configuration	direct on line		
Full Load Amps	18.1/12.6		Breakdown Torque	132 LB-FT		
R.P.M.	1760/1160		Pull-up Torque	54.3 LB-FT		
Hz	60 Phase	3	Locked-rotor Torque	70.6 LB-FT		
NEMA Design Code	A	KVA Code	H	Starting Current	77.2 A	
Service Factor (S.F.)	1.15		No-load Current	7.66 A		
NEMA Nom. Eff.	0	Power Factor	0	Line-line Res. @ 25°C	1.3335 Ω	
Rating - Duty	40C AMB-CONT		Temp. Rise @ Rated Load	34°C		
S.F. Amps			Temp. Rise @ S.F. Load	38°C		
			Locked-rotor Power Factor	39.1		

Load Characteristics 460 V, 60 Hz, 6.7 HP

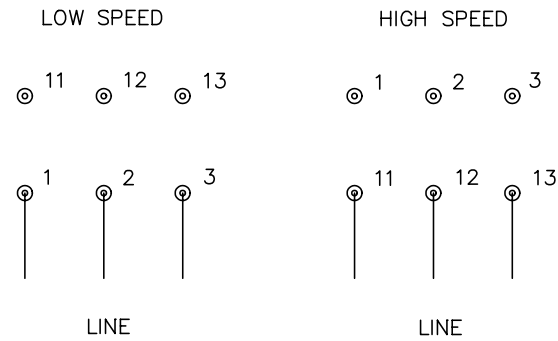
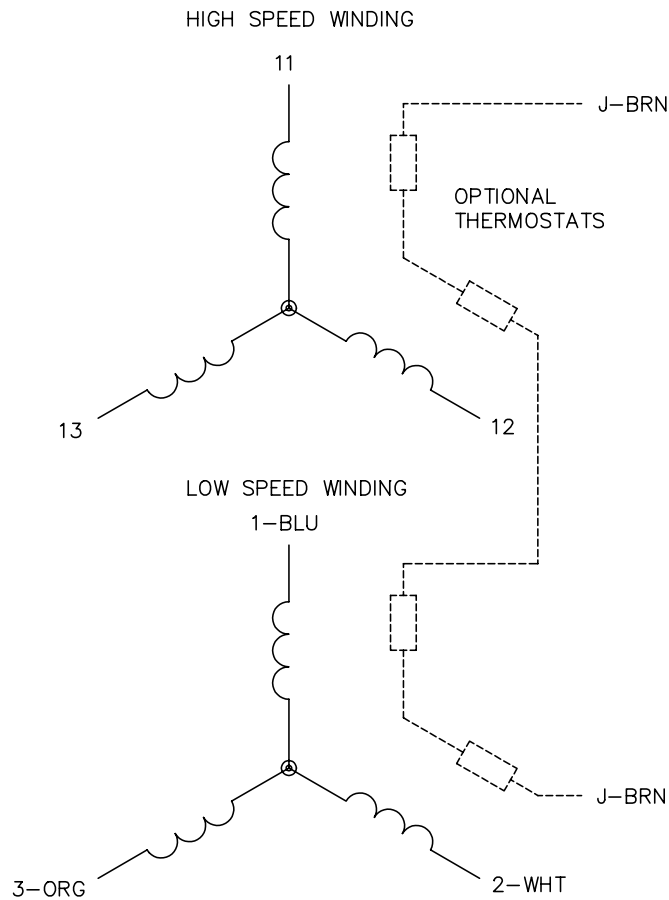
% of Rated Load	25	50	75	100	125	150	S.F.
Power Factor	27	44	55	64	70	73	68
Efficiency	71.6	82.3	85.5	87	87.3	87.3	87.2
Speed	1194.3	1189.7	1185.2	1180.3	1175	1169.5	1177
Line amperes	8.1	8.99	10.1	11.5	13.1	14.7	12.5

Performance Graph at 460V, 60Hz, 6.7HP Typical performance - Not guaranteed values





CD0013



NOTES:

1. INTERCHANGE ANY TWO LINE LEADS TO REVERSE ROTATION.
2. OPTIONAL THERMOSTATS ARE PROVIDED WHEN SPECIFIED.
3. ACTUAL NUMBER OF INTERNAL PARALLEL CIRCUITS MAY VARY.
4. LEAD COLORS ARE OPTIONAL. LEADS MUST ALWAYS BE NUMBERED AS SHOWN.

REV. DESC: REVISE TO SHOW OPTIONAL COLORS			
REV. LTR: D	BY: JLP	REVISED: 01/22/99 8:50	TDR: 0171435
Ω10003		FILE: AAA00005143	MDL: -
		MTL: -	

BALDOR ELECTRIC Co.

3PH, SV, 6 LEADS, 2-SPEED 2-WINDING

CD0013