

BALDOR® • RELIANCE 

Product Information Packet

M2514T-8

20HP,3510RPM,3PH,60HZ,256T,3928M,OPSB,F1

Part Detail							
Revision:	E	Status:	INA/A	Change #:		Proprietary:	No
Type:	AC	Elec. Spec:	39WGX714	CD Diagram:	CD0695	Mfg Plant:	
Mech. Spec:	39D101	Layout:	39LYD101	Poles:	02	Created Date:	05-10-2010
Base:	RG	Eff. Date:	03-08-2016	Leads:	6#8		

Specs			
Catalog Number:	M2514T-8	KVA Code:	G
Enclosure:	OPSB	Lifting Lugs:	Standard Lifting Lugs
Frame:	256T	Locked Bearing Indicator:	No Locked Bearing
Output @ Frequency:	20.000 HP @ 60 HZ	Motor Lead Quantity/Wire Size:	6 @ 8 AWG
Synchronous Speed @ Frequency:	3600 RPM @ 60 HZ	Motor Lead Exit:	Ko Box
Voltage @ Frequency:	200.0 V @ 60 HZ	Motor Lead Termination:	Flying Leads
XP Division:	Not Applicable	Motor Type:	3928M
Agency Approvals:	CSA	Mounting Arrangement:	F1
	UR	Power Factor:	88
Auxillary Box:	No Auxillary Box	Product Family:	General Purpose
Auxillary Box Lead Termination:	None	Pulley End Bearing Type:	Ball
Base Indicator:	Rigid	Pulley Face Code:	Standard
Bearing Grease Type:	Polyrex EM (-20F +300F)	Pulley Shaft Indicator:	Standard
Blower:	None	Rodent Screen:	None
Current @ Voltage:	54.000 A @ 200.0 V	Shaft Extension Location:	Pulley End
Design Code:	B	Shaft Ground Indicator:	No Shaft Grounding
Drip Cover:	No Drip Cover	Shaft Rotation:	Reversible
Duty Rating:	CONT	Shaft Slinger Indicator:	No Slinger

Electrically Isolated Bearing:	Not Electrically Isolated	Speed Code:	Single Speed
Feedback Device:	NO FEEDBACK	Motor Standards:	NEMA
Front Face Code:	Standard	Starting Method:	Part Winding
Front Shaft Indicator:	None	Thermal Device - Bearing:	None
Heater Indicator:	No Heater	Thermal Device - Winding:	None
Insulation Class:	B	Vibration Sensor Indicator:	No Vibration Sensor
Inverter Code:	Not Inverter	Winding Thermal 1:	None
		Winding Thermal 2:	None

Nameplate NP1256L										
CAT.NO.	M2514T-8									
SPEC.	39D101X714H1									
HP	20									
VOLTS	200									
AMP	54									
RPM	3510									
FRAME	256T				HZ	60			PH	3
SER.F.	1.15		CODE	G	DES	B		CLASS	B	
NEMA-NOM-EFF	90.2		PF	88						
RATING	40C AMB-CONT									
CC	010A				USABLE AT 208V					
DE	6309				ODE	6208				
ENCL	OPSB		SN							

AC Induction Motor Performance Data

Record # 31170

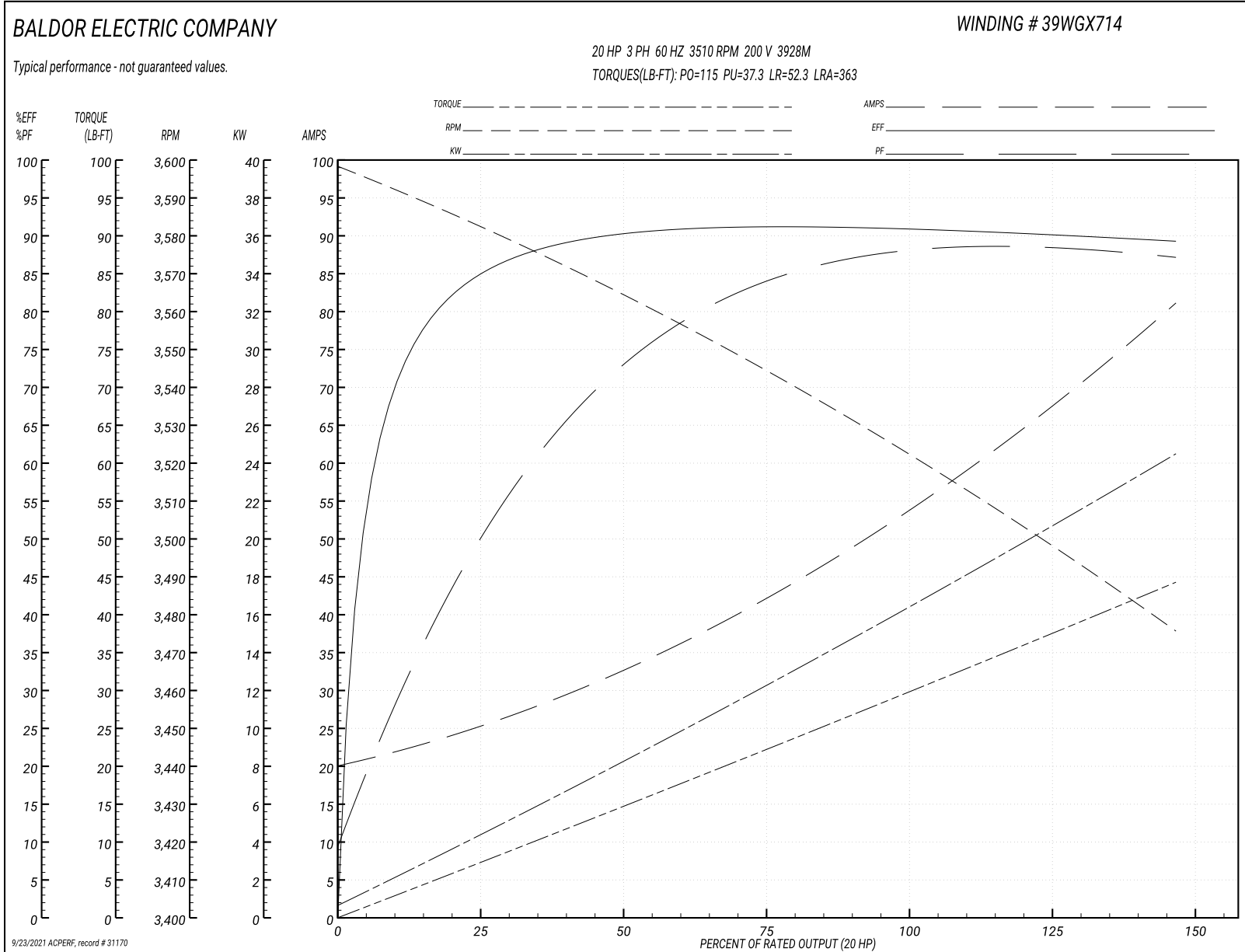
Typical performance - not guaranteed values

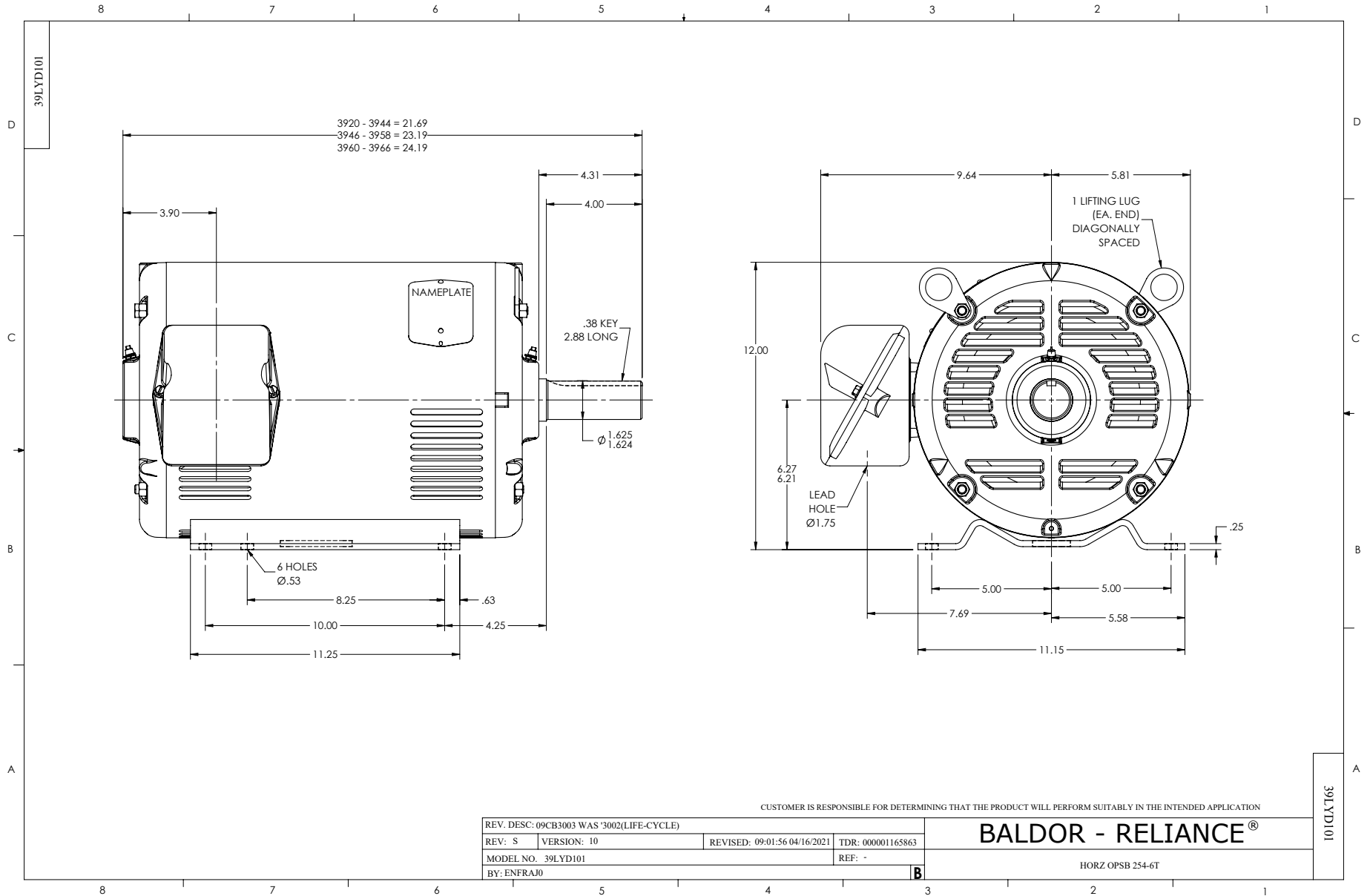
Winding: 39WGX714-R001		Type: 3928M		Enclosure: OPSB	
Nameplate Data			200 V, 60 Hz: Single Voltage Motor		
Rated Output (HP)	20	Full Load Torque	29.6 LB-FT		
Volts	200	Start Configuration	direct on line		
Full Load Amps	54	Breakdown Torque	115 LB-FT		
R.P.M.	3510	Pull-up Torque	37.3 LB-FT		
Hz	60 Phase	3	Locked-rotor Torque	52.3 LB-FT	
NEMA Design Code	B KVA Code	G	Starting Current	363 A	
Service Factor (S.F.)	1.15	No-load Current	20.8 A		
NEMA Nom. Eff.	90.2	Power Factor	88	Line-line Res. @ 25°C	0.0925 Ω
Rating - Duty	40C AMB-CONT		Temp. Rise @ Rated Load	44°C	
S.F. Amps			Temp. Rise @ S.F. Load	53°C	
			Locked-rotor Power Factor	30	
			Rotor inertia	0.715 LB-FT ²	

Load Characteristics 200 V, 60 Hz, 20 HP

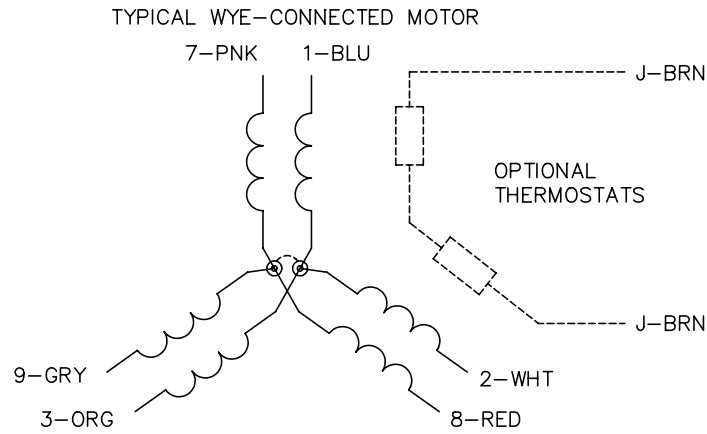
% of Rated Load	25	50	75	100	125	150	S.F.
Power Factor	53	74	84	87	88	88	88
Efficiency	84.5	90.2	91.3	91.1	90.2	89.3	90.6
Speed	3581	3564	3545	3524	3499	3476	3509
Line amperes	24.3	32.7	42.1	53.9	67	80.5	61.8

Performance Graph at 200V, 60Hz, 20.0HP Typical performance - Not guaranteed values

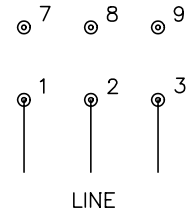




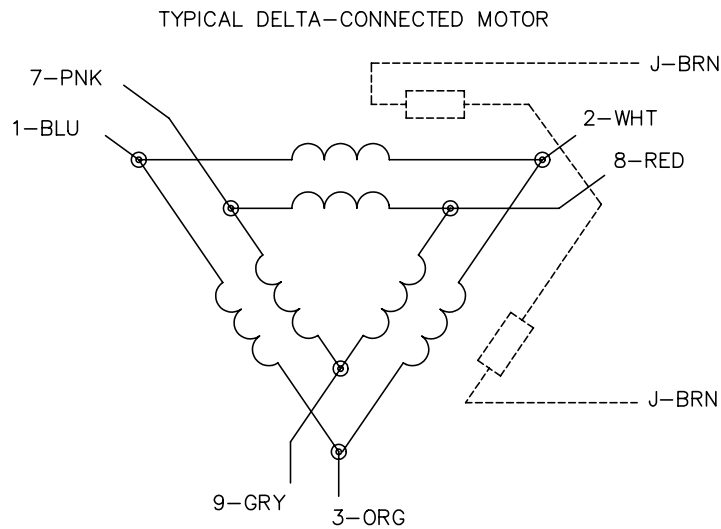
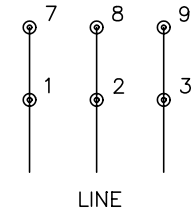
CD0695



START CONNECTION



RUN CONNECTION



NOTES:

1. MOTOR MAY BE WYE CONNECTED OR DELTA CONNECTED.
2. INTERCHANGE ANY TWO LINE LEADS TO REVERSE ROTATION.
3. OPTIONAL THERMOSTATS ARE PROVIDED WHEN SPECIFIED.
4. ACTUAL NUMBER OF INTERNAL PARALLEL CIRCUITS MAY VARY.
5. LEAD COLORS ARE OPTIONAL. LEADS MUST ALWAYS BE NUMBERED AS SHOWN.

REV. DESC: REVISE TO SHOW OPTIONAL COLORS			
REV. LTR: C	BY: JLP	REVISED: 01/21/99 3:19	TDR: 0171435
9690D0		FILE: AAA00005151	MDL: -
		MTL: -	

BALDOR ELECTRIC Co.

3PH, SV, 6 LEADS, PART WINDING START

CD0695