

BALDOR® • RELIANCE 

Product Information Packet

M2516T-8

25HP,3525RPM,3PH,60HZ,256T,3932M,OPSB,F1

Part Detail							
Revision:	E	Status:	INA/A	Change #:		Proprietary:	No
Type:	AC	Elec. Spec:	39WGW666	CD Diagram:	CD0695	Mfg Plant:	
Mech. Spec:	39D101	Layout:	39LYD101	Poles:	02	Created Date:	05-10-2010
Base:	RG	Eff. Date:	03-08-2016	Leads:	6#10		

Specs			
Catalog Number:	M2516T-8	KVA Code:	G
Enclosure:	ODP	Lifting Lugs:	Standard Lifting Lugs
Frame:	256T	Locked Bearing Indicator:	No Locked Bearing
Output @ Frequency:	25.000 HP @ 60 HZ	Motor Lead Quantity/Wire Size:	6 @ 10 AWG
Synchronous Speed @ Frequency:	3600 RPM @ 60 HZ	Motor Lead Exit:	Ko Box
Voltage @ Frequency:	200.0 V @ 60 HZ	Motor Lead Termination:	Flying Leads
XP Division:	Not Applicable	Motor Type:	3932M
Agency Approvals:	UR	Mounting Arrangement:	F1
	CSA	Power Factor:	87
Auxillary Box:	No Auxillary Box	Product Family:	General Purpose
Auxillary Box Lead Termination:	None	Pulley End Bearing Type:	Ball
Base Indicator:	RG	Pulley Face Code:	Standard
Bearing Grease Type:	Polyrex EM (-20F +300F)	Pulley Shaft Indicator:	Standard
Blower:	None	Rodent Screen:	None
Current @ Voltage:	66.800 A @ 208.0 V	Shaft Extension Location:	Pulley End
	68.000 A @ 200.0 V	Shaft Ground Indicator:	No Shaft Grounding
Design Code:	B	Shaft Rotation:	Reversible
Drip Cover:	No Drip Cover	Shaft Slinger Indicator:	No Slinger

Duty Rating:	CONT	Speed Code:	Single Speed
Electrically Isolated Bearing:	Not Electrically Isolated	Motor Standards:	NEMA
Feedback Device:	NO FEEDBACK	Starting Method:	Part Winding
Front Face Code:	Standard	Thermal Device - Bearing:	None
Front Shaft Indicator:	None	Thermal Device - Winding:	None
Heater Indicator:	No Heater	Vibration Sensor Indicator:	No Vibration Sensor
Insulation Class:	B	Winding Thermal 1:	None
Inverter Code:	Not Inverter	Winding Thermal 2:	None

Nameplate NP1256L										
CAT.NO.	M2516T-8									
SPEC.	39D101W666H1									
HP	25									
VOLTS	200									
AMP	68									
RPM	3525									
FRAME	256T				HZ	60			PH	3
SER.F.	1.15		CODE	G	DES	B		CLASS	B	
NEMA-NOM-EFF	91		PF	87						
RATING	40C AMB-CONT									
CC	010A				USABLE AT 208V			66.8		
DE	6309				ODE	6208				
ENCL	OPSB		SN							

AC Induction Motor Performance Data

Record # 12856

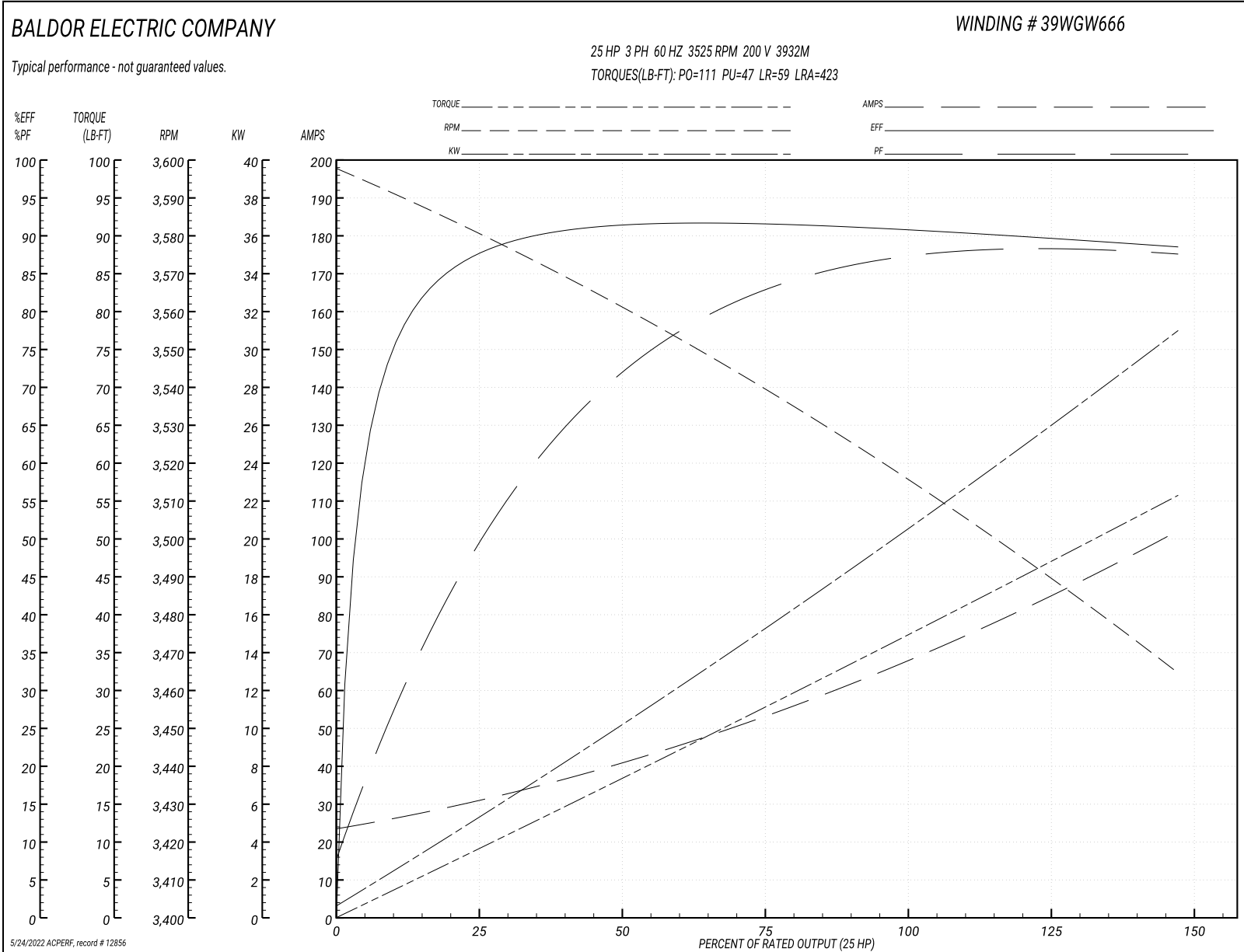
Typical performance - not guaranteed values

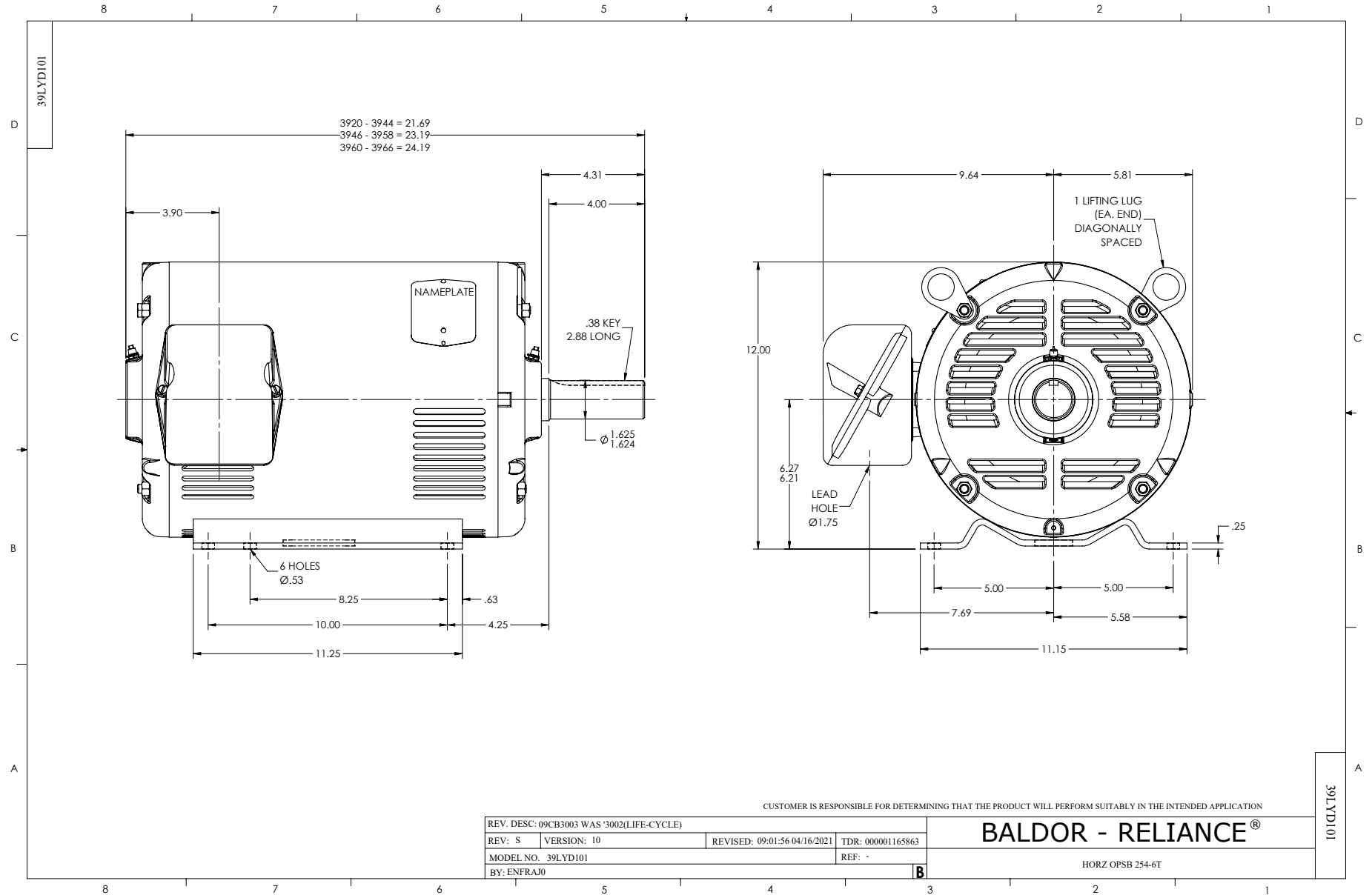
Winding: 39WGW666-R001		Type: 3932M		Enclosure: OPSB	
Nameplate Data			200 V, 60 Hz: Single Voltage Motor		
Rated Output (HP)	25	Full Load Torque	37.2 LB-FT		
Volts	200	Start Configuration	direct on line		
Full Load Amps	68	Breakdown Torque	111 LB-FT		
R.P.M.	3525	Pull-up Torque	47 LB-FT		
Hz	60 Phase	3	Locked-rotor Torque	59 LB-FT	
NEMA Design Code	B KVA Code	G	Starting Current	423 A	
Service Factor (S.F.)	1.15		No-load Current	24.4 A	
NEMA Nom. Eff.	91 Power Factor	87	Line-line Res. @ 25°C	0.0863 Ω	
Rating - Duty	40C AMB-CONT		Temp. Rise @ Rated Load	44°C	
S.F. Amps			Temp. Rise @ S.F. Load	52°C	
			Locked-rotor Power Factor	32	
			Rotor inertia	0.817 LB-FT ²	

Load Characteristics 200 V, 60 Hz, 25 HP

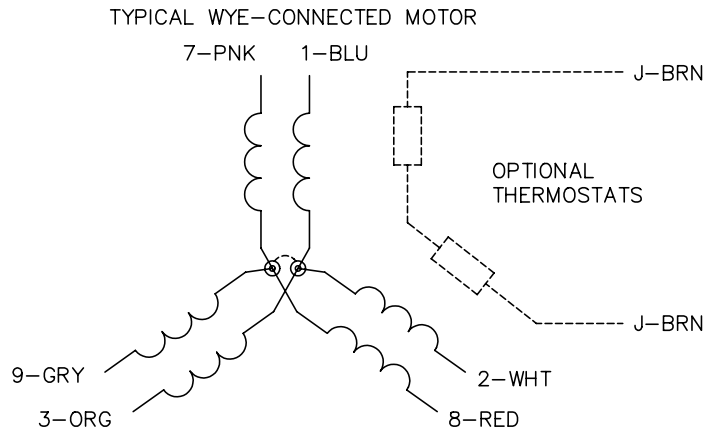
% of Rated Load	25	50	75	100	125	150	S.F.
Power Factor	52	74	82	86	88	88	87
Efficiency	87.3	91.1	91.5	91	89.9	88.4	90.3
Speed	3579	3560	3539	3517	3493	3463	3503
Line amperes	29.9	40.5	53.7	68.4	84.4	101.6	78

Performance Graph at 200V, 60Hz, 25.0HP Typical performance - Not guaranteed values

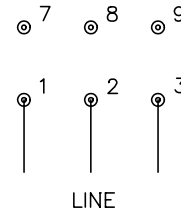




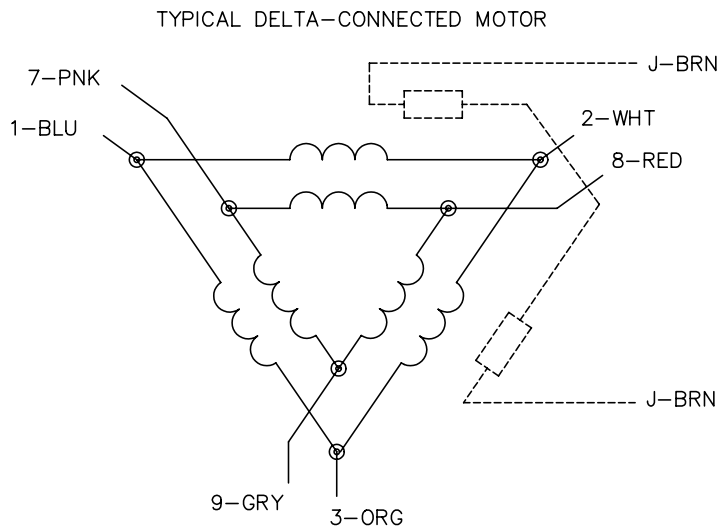
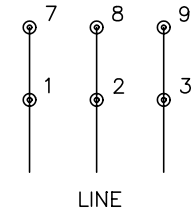
CD0695



START CONNECTION



RUN CONNECTION



NOTES:

1. MOTOR MAY BE WYE CONNECTED OR DELTA CONNECTED.
2. INTERCHANGE ANY TWO LINE LEADS TO REVERSE ROTATION.
3. OPTIONAL THERMOSTATS ARE PROVIDED WHEN SPECIFIED.
4. ACTUAL NUMBER OF INTERNAL PARALLEL CIRCUITS MAY VARY.
5. LEAD COLORS ARE OPTIONAL. LEADS MUST ALWAYS BE NUMBERED AS SHOWN.

REV. DESC: REVISE TO SHOW OPTIONAL COLORS			
REV. LTR: C	BY: JLP	REVISED: 01/21/99 3:19	TDR: 0171435
9690D0		FILE: AAA00005151	MDL: -
		MTL: -	

BALDOR ELECTRIC Co.

3PH, SV, 6 LEADS, PART WINDING START

CD0695