

BALDOR® • RELIANCE 

Product Information Packet

M2534T-8

30HP,3525RPM,3PH,60HZ,284TS,3938M,OPSB

Part Detail							
Revision:	V	Status:	INA/A	Change #:		Proprietary:	No
Type:	AC	Elec. Spec:	39WGW643	CD Diagram:	CD0695	Mfg Plant:	
Mech. Spec:	39L35	Layout:	39LYL035	Poles:	02	Created Date:	
Base:	RG	Eff. Date:	03-08-2016	Leads:	6#10		

Specs			
Catalog Number:	M2534T-8	Inverter Code:	Not Inverter
Enclosure:	ODP	KVA Code:	G
Frame:	284TS	Lifting Lugs:	Standard Lifting Lugs
Output @ Frequency:	30.000 HP @ 60 HZ	Locked Bearing Indicator:	No Locked Bearing
Synchronous Speed @ Frequency:	3600 RPM @ 60 HZ	Motor Lead Quantity/Wire Size:	6 @ 10 AWG
Voltage @ Frequency:	200.0 V @ 60 HZ	Motor Lead Exit:	Ko Box
XP Division:	Not Applicable	Motor Lead Termination:	Flying Leads
Agency Approvals:	CSA	Motor Type:	3938M
	UR	Mounting Arrangement:	F1
Auxillary Box:	No Auxillary Box	Power Factor:	87
Auxillary Box Lead Termination:	None	Product Family:	General Purpose
Base Indicator:	RG	Pulley End Bearing Type:	Ball
Bearing Grease Type:	Polyrex EM (-20F +300F)	Pulley Face Code:	Standard
Blower:	None	Pulley Shaft Indicator:	Standard
Current @ Voltage:	79.300 A @ 208.0 V	Rodent Screen:	None
	81.000 A @ 200.0 V	Shaft Extension Location:	Pulley End
Design Code:	B	Shaft Ground Indicator:	No Shaft Grounding
Drip Cover:	No Drip Cover	Shaft Rotation:	Reversible

Duty Rating:	CONT	Shaft Slinger Indicator:	No Slinger
Electrically Isolated Bearing:	Not Electrically Isolated	Speed Code:	Single Speed
Feedback Device:	NO FEEDBACK	Motor Standards:	NEMA
Front Face Code:	Standard	Starting Method:	Part Winding
Front Shaft Indicator:	None	Thermal Device - Bearing:	None
Heater Indicator:	No Heater	Thermal Device - Winding:	None
Insulation Class:	B	Vibration Sensor Indicator:	No Vibration Sensor

Nameplate NP1256L										
CAT.NO.	M2534T-8									
SPEC.	39L035W643									
HP	30									
VOLTS	200									
AMP	81									
RPM	3525									
FRAME	284TS				HZ	60			PH	3
SER.F.	1.15		CODE	G	DES	B		CLASS	B	
NEMA-NOM-EFF	91		PF	87						
RATING	40C AMB-CONT									
CC	010A				USABLE AT 208V			79.3		
DE	6311				ODE	6208				
ENCL	OPSB		SN							

AC Induction Motor Performance Data

Record # 12838

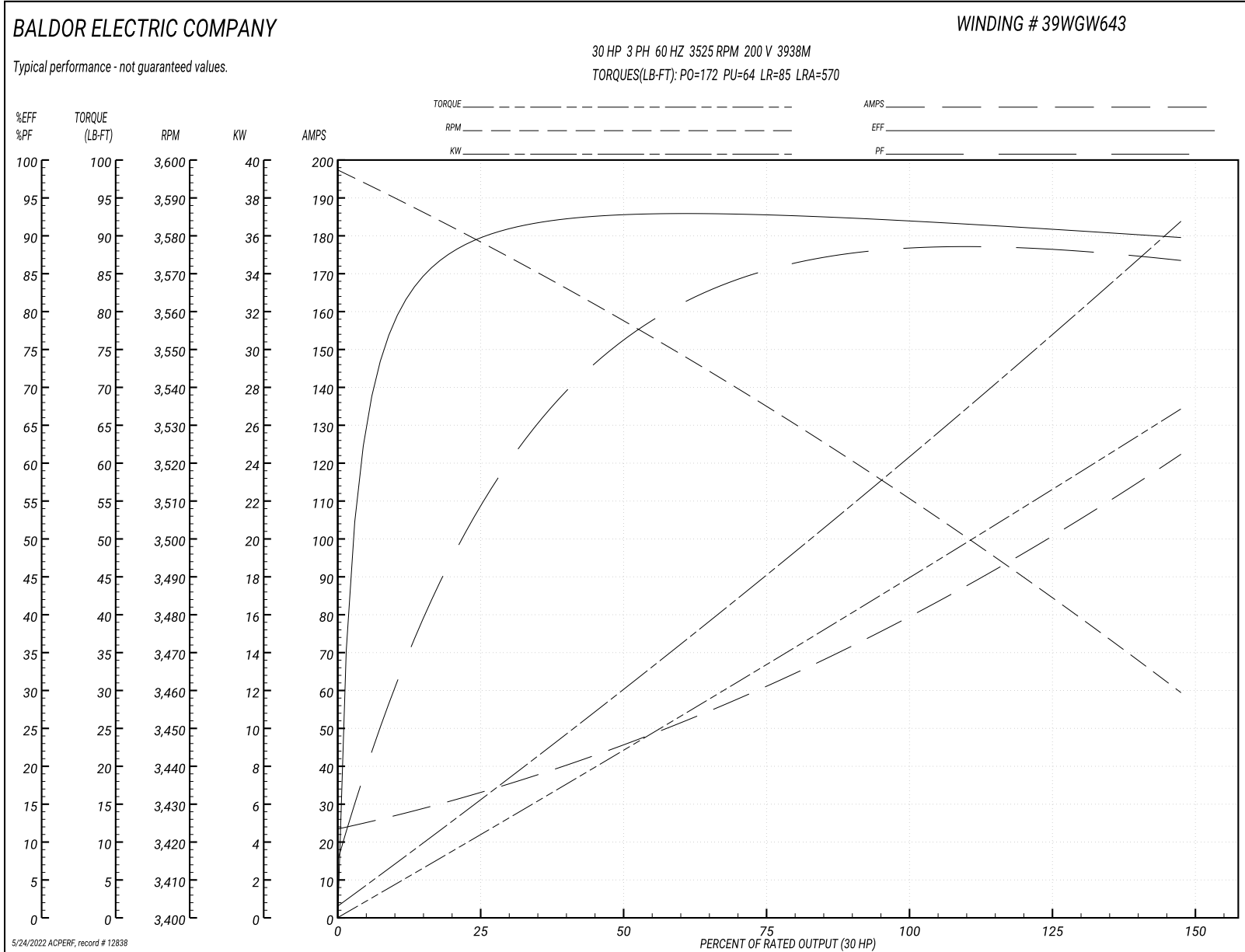
Typical performance - not guaranteed values

Winding: 39WG643-R001			Type: 3938M	Enclosure: OPSB	
Nameplate Data			200 V, 60 Hz: Single Voltage Motor		
Rated Output (HP)	30		Full Load Torque	44.8 LB-FT	
Volts	200		Start Configuration	direct on line	
Full Load Amps	81		Breakdown Torque	172 LB-FT	
R.P.M.	3525		Pull-up Torque	64 LB-FT	
Hz	60	Phase	3	Locked-rotor Torque	85 LB-FT
NEMA Design Code	B	KVA Code	G	Starting Current	570 A
Service Factor (S.F.)	1.15			No-load Current	24.6 A
NEMA Nom. Eff.	91	Power Factor	87	Line-line Res. @ 25°C	0.623 Ω
Rating - Duty		40C	AMB-CONT	Temp. Rise @ Rated Load	49°C
S.F. Amps				Temp. Rise @ S.F. Load	61°C
				Locked-rotor Power Factor	30
				Rotor inertia	0.971 LB-FT ²

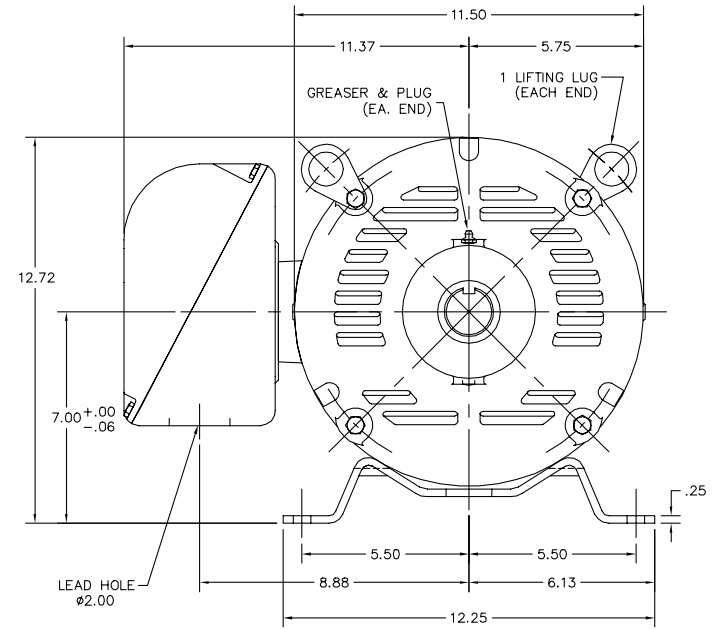
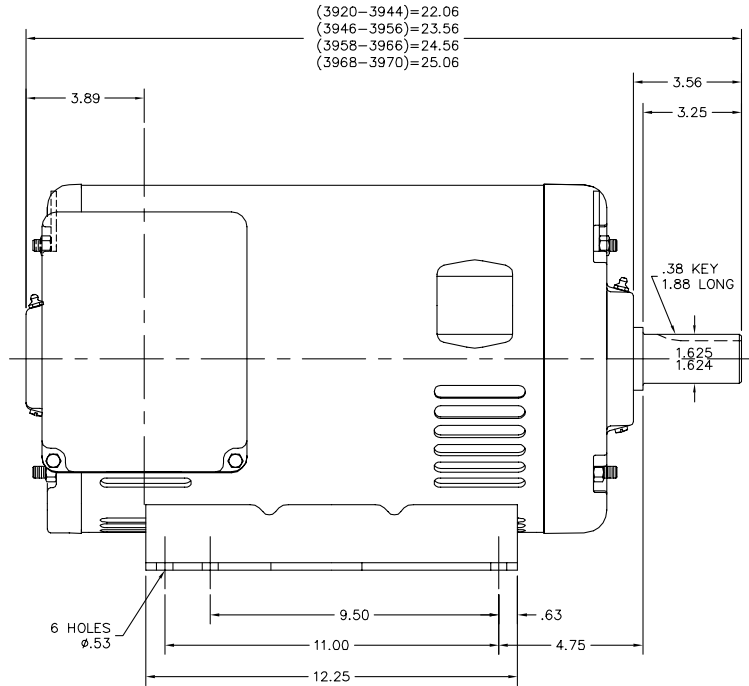
Load Characteristics 200 V, 60 Hz, 30 HP

% of Rated Load	25	50	75	100	125	150	S.F.
Power Factor	58	78	85	87	88	87	88
Efficiency	89.6	92.6	92.7	92.1	91	89.7	91.4
Speed	3576	3556	3535	3512	3487	3458	3497
Line amperes	31.7	45.3	61.9	80.3	100.1	121.7	92.18

Performance Graph at 200V, 60Hz, 30.0HP Typical performance - Not guaranteed values



39LYL035



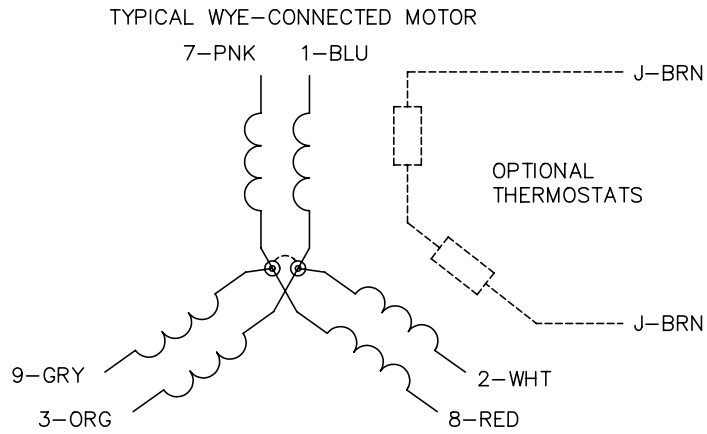
39LYL035

CUSTOMER IS RESPONSIBLE FOR DETERMINING THAT BALDOR'S PRODUCT WILL PERFORM SUITABLY IN THE INTENDED APPLICATION.

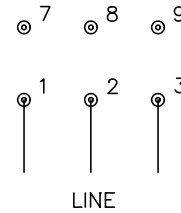
REV. DESC: CORRECT DESCRIPTION		
REV. LTR: G	VERSION: 04	TDR: 000001019052
FILE: \AAA\00007\095	REVISED: 12:37:51 03/13/2017	BY: ENNINDO
MTL: -		

BALDOR
 HOR OPSB 284-6TS
 SH 1 of 1

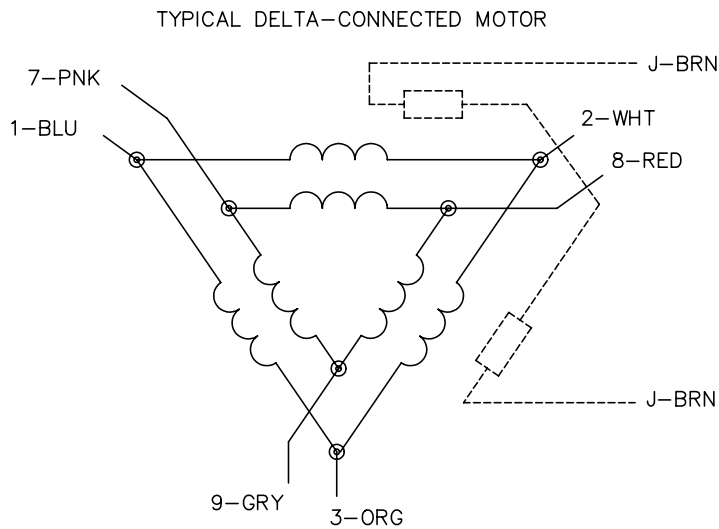
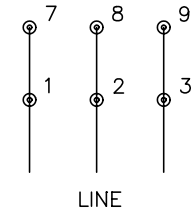
CD0695



START CONNECTION



RUN CONNECTION



NOTES:

1. MOTOR MAY BE WYE CONNECTED OR DELTA CONNECTED.
2. INTERCHANGE ANY TWO LINE LEADS TO REVERSE ROTATION.
3. OPTIONAL THERMOSTATS ARE PROVIDED WHEN SPECIFIED.
4. ACTUAL NUMBER OF INTERNAL PARALLEL CIRCUITS MAY VARY.
5. LEAD COLORS ARE OPTIONAL. LEADS MUST ALWAYS BE NUMBERED AS SHOWN.

REV. DESC: REVISE TO SHOW OPTIONAL COLORS			
REV. LTR: C	BY: JLP	REVISED: 01/21/99 3:19	TDR: 0171435
9690D0		FILE: AAA00005151	MDL: -
		MTL: -	

BALDOR ELECTRIC Co.

3PH, SV, 6 LEADS, PART WINDING START

CD0695