

**BALDOR® • RELIANCE** 

**Product Information Packet**

**M2538T-8**

**40HP,3500RPM,3PH,60HZ,286TS,3946M,OPSB**

Part Detail							
Revision:	N	Status:	INA/A	Change #:		Proprietary:	No
Type:	AC	Elec. Spec:	39WGX291	CD Diagram:	CD0695	Mfg Plant:	
Mech. Spec:	39L35	Layout:	39LYL035	Poles:	02	Created Date:	
Base:	RG	Eff. Date:	03-08-2016	Leads:	6#8		

Specs			
Catalog Number:	M2538T-8	Inverter Code:	Not Inverter
Enclosure:	OPSB	KVA Code:	G
Frame:	286TS	Lifting Lugs:	Standard Lifting Lugs
Frame Material:	Steel	Locked Bearing Indicator:	No Locked Bearing
Output @ Frequency:	40.000 HP @ 60 HZ	Motor Lead Quantity/Wire Size:	6 @ 8 AWG
Synchronous Speed @ Frequency:	3600 RPM @ 60 HZ	Motor Lead Exit:	Ko Box
Voltage @ Frequency:	200.0 V @ 60 HZ	Motor Lead Termination:	Flying Leads
XP Class and Group:	None	Motor Type:	3946M
XP Division:	Not Applicable	Mounting Arrangement:	F1
Agency Approvals:	CSA	Power Factor:	91
	UR	Product Family:	General Purpose
Auxillary Box:	No Auxillary Box	Pulley End Bearing Type:	Ball
Auxillary Box Lead Termination:	None	Pulley Face Code:	Standard
Base Indicator:	Rigid	Pulley Shaft Indicator:	Standard
Bearing Grease Type:	Polyrex EM (-20F +300F)	Rodent Screen:	None
Blower:	None	Shaft Extension Location:	Pulley End
Current @ Voltage:	101.000 A @ 208.0 V	Shaft Ground Indicator:	No Shaft Grounding
	104.000 A @ 200.0 V	Shaft Rotation:	Reversible

<b>Design Code:</b>	B	<b>Shaft Slinger Indicator:</b>	No Slinger
<b>Drip Cover:</b>	No Drip Cover	<b>Speed Code:</b>	Single Speed
<b>Duty Rating:</b>	CONT	<b>Motor Standards:</b>	NEMA
<b>Electrically Isolated Bearing:</b>	Not Electrically Isolated	<b>Starting Method:</b>	Part Winding
<b>Feedback Device:</b>	NO FEEDBACK	<b>Thermal Device - Bearing:</b>	None
<b>Front Face Code:</b>	Standard	<b>Thermal Device - Winding:</b>	None
<b>Front Shaft Indicator:</b>	None	<b>Vibration Sensor Indicator:</b>	No Vibration Sensor
<b>Heater Indicator:</b>	No Heater	<b>Winding Thermal 1:</b>	None
<b>Insulation Class:</b>	B	<b>Winding Thermal 2:</b>	None

Nameplate NP1256L										
CAT.NO.	M2538T-8									
SPEC.	39L035X291									
HP	40									
VOLTS	200									
AMP	104									
RPM	3500									
FRAME	286TS				HZ	60			PH	3
SER.F.	1.15		CODE	G	DES	B		CLASS	B	
NEMA-NOM-EFF	91.7		PF	91						
RATING	40C AMB-CONT									
CC	010A				USABLE AT 208V			101		
DE	6311				ODE	6208				
ENCL	OPSB		SN							

**AC Induction Motor Performance Data**

Record # 21030

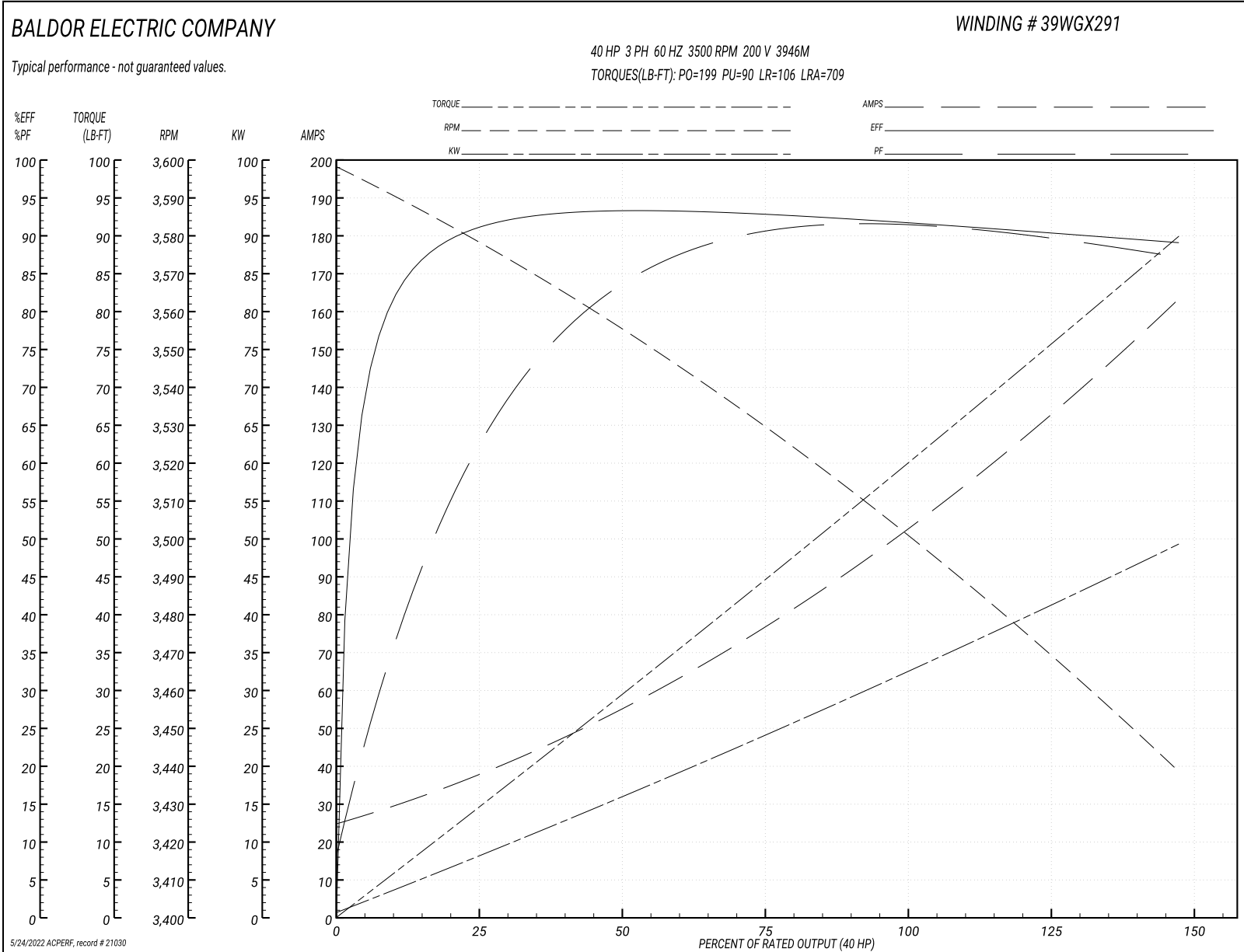
Typical performance - not guaranteed values

Winding: 39WGX291-R001		Type: 3946M	Enclosure: OPSB	
<b>Nameplate Data</b>			<b>200 V, 60 Hz: Single Voltage Motor</b>	
Rated Output (HP)	40	Full Load Torque	60 LB-FT	
Volts	200	Start Configuration	direct on line	
Full Load Amps	104	Breakdown Torque	199 LB-FT	
R.P.M.	3500	Pull-up Torque	90 LB-FT	
Hz	60 Phase	Locked-rotor Torque	106 LB-FT	
NEMA Design Code	B KVA Code	Starting Current	709 A	
Service Factor (S.F.)	1.15	No-load Current	26.2 A	
NEMA Nom. Eff.	91.7 Power Factor	Line-line Res. @ 25°C	0.046 Ω	
Rating - Duty	40C AMB-CONT	Temp. Rise @ Rated Load	58°C	
S.F. Amps		Temp. Rise @ S.F. Load	71°C	
		Locked-rotor Power Factor	28	
		Rotor inertia	1.17 LB-FT <sup>2</sup>	

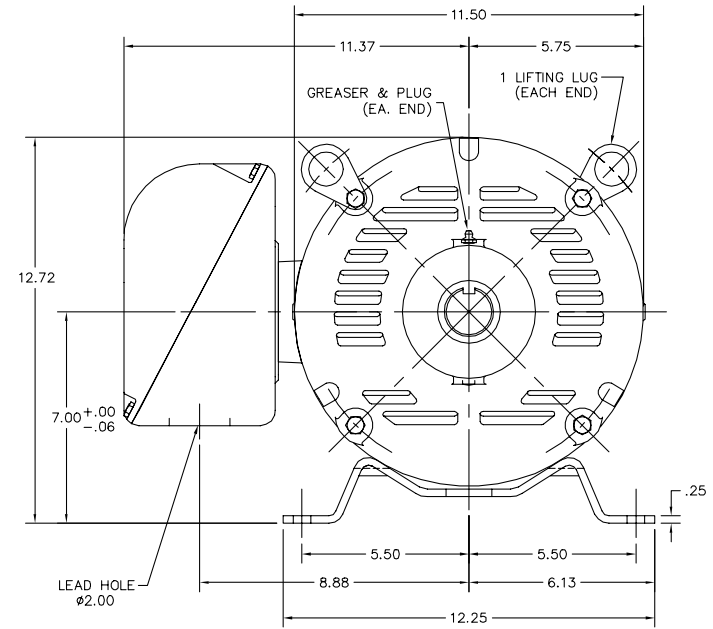
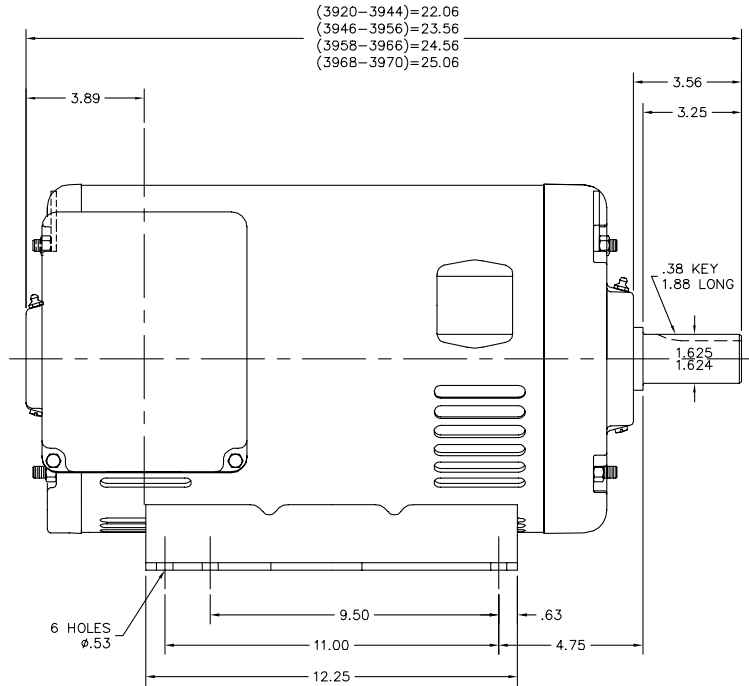
**Load Characteristics 200 V, 60 Hz, 40 HP**

% of Rated Load	25	50	75	100	125	150	S.F.
Power Factor	67	85	90	91	90	87	90
Efficiency	90.6	93	92.8	91.9	90.6	89	91.1
Speed	3577	3554	3529	3502	3471	3438	3483
Line amperes	36	55.2	78.2	104	131	163	120

Performance Graph at 200V, 60Hz, 40.0HP Typical performance - Not guaranteed values



39LYL035



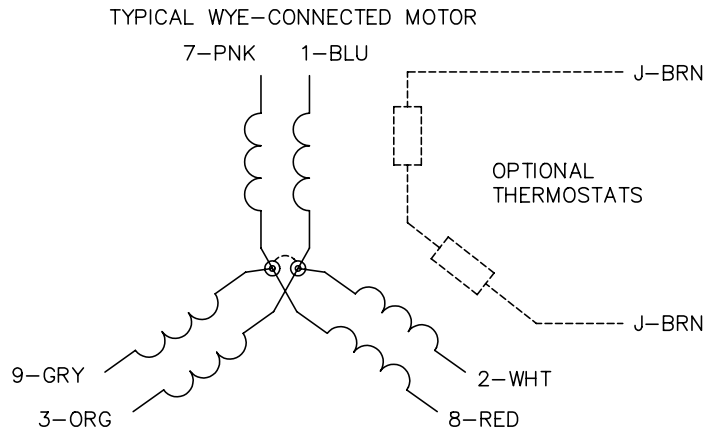
39LYL035

CUSTOMER IS RESPONSIBLE FOR DETERMINING THAT BALDOR'S PRODUCT WILL PERFORM SUITABLY IN THE INTENDED APPLICATION.

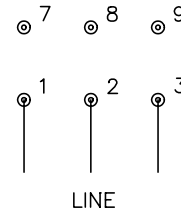
REV. DESC: CORRECT DESCRIPTION		
REV. LTR: G	VERSION: 04	TDR: 000001019052
FILE: \AAA\00007\095	REVISED: 12:37:51 03/13/2017	BY: ENNINDO
MTL: -		

**BALDOR**  
 HOR OPSB 284-6TS  
 SH 1 of 1

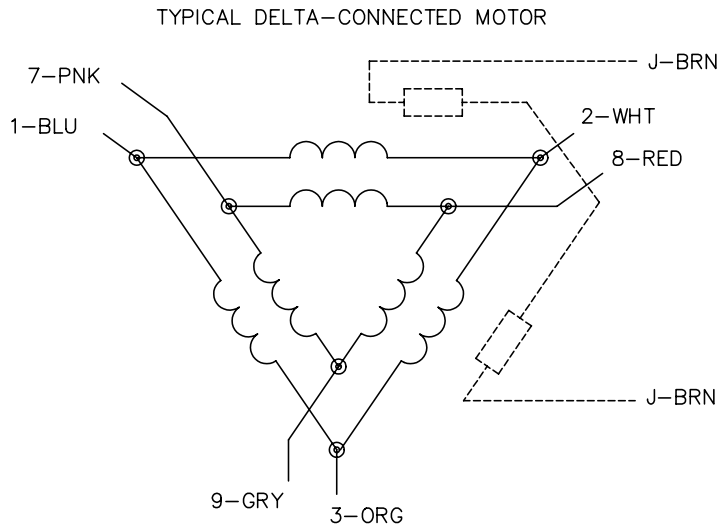
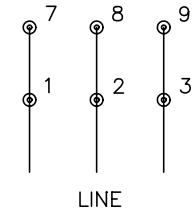
CD0695



START CONNECTION



RUN CONNECTION



NOTES:

1. MOTOR MAY BE WYE CONNECTED OR DELTA CONNECTED.
2. INTERCHANGE ANY TWO LINE LEADS TO REVERSE ROTATION.
3. OPTIONAL THERMOSTATS ARE PROVIDED WHEN SPECIFIED.
4. ACTUAL NUMBER OF INTERNAL PARALLEL CIRCUITS MAY VARY.
5. LEAD COLORS ARE OPTIONAL. LEADS MUST ALWAYS BE NUMBERED AS SHOWN.

REV. DESC: REVISE TO SHOW OPTIONAL COLORS

REV. LTR: C BY: JLP

REVISED: 01/21/99 3:19

TDR: 0171435

9690D0

FILE: AAA00005151

MDL: -

MTL: -

**BALDOR ELECTRIC Co.**

3PH, SV, 6 LEADS, PART WINDING START

CD0695