

**BALDOR® • RELIANCE** 

**Product Information Packet**

**M3311T-58**

**7.5HP,1465RPM,3PH,50HZ,213T,3735M,OPSB,F**

Part Detail							
Revision:	J	Status:	INA/A	Change #:		Proprietary:	No
Type:	AC	Elec. Spec:	37WGR166	CD Diagram:	CD0382	Mfg Plant:	
Mech. Spec:	37B101	Layout:	37LYB101	Poles:	04	Created Date:	09-21-2011
Base:	RG	Eff. Date:	10-28-2016	Leads:	6#14		

Specs			
Catalog Number:	M3311T-58	Inverter Code:	Not Inverter
Enclosure:	OPSB	KVA Code:	J
Frame:	213T	Lifting Lugs:	Standard Lifting Lugs
Frame Material:	Steel	Locked Bearing Indicator:	No Locked Bearing
Motor Letter Type:	Three Phase	Motor Lead Quantity/Wire Size:	6 @ 14 AWG
Output @ Frequency:	7.500 HP @ 50 HZ	Motor Lead Exit:	Ko Box
Synchronous Speed @ Frequency:	1500 RPM @ 50 HZ	Motor Lead Termination:	Flying Leads
Voltage @ Frequency:	400.0 V @ 50 HZ	Motor Type:	3735M
XP Class and Group:	None	Mounting Arrangement:	F1
XP Division:	Not Applicable	Power Factor:	78
Agency Approvals:	CE	Product Family:	General Purpose
	CSA	Pulley End Bearing Type:	Ball
	UR	Pulley Face Code:	Standard
Auxillary Box:	No Auxillary Box	Pulley Shaft Indicator:	Standard
Auxillary Box Lead Termination:	None	Rodent Screen:	None
Base Indicator:	Rigid	RoHS Status:	ROHS COMPLIANT
Bearing Grease Type:	Polyrex EM (-20F +300F)	Shaft Extension Location:	Pulley End
Blower:	None	Shaft Ground Indicator:	No Shaft Grounding

<b>Current @ Voltage:</b>	11.500 A @ 400.0 V	<b>Shaft Rotation:</b>	Reversible
<b>Design Code:</b>	B	<b>Shaft Slinger Indicator:</b>	No Slinger
<b>Drip Cover:</b>	No Drip Cover	<b>Speed Code:</b>	Single Speed
<b>Duty Rating:</b>	CONT	<b>Motor Standards:</b>	NEMA
<b>Electrically Isolated Bearing:</b>	Not Electrically Isolated	<b>Starting Method:</b>	Wye Start - Delta Run
<b>Feedback Device:</b>	NO FEEDBACK	<b>Thermal Device - Bearing:</b>	None
<b>Front Face Code:</b>	Standard	<b>Thermal Device - Winding:</b>	None
<b>Front Shaft Indicator:</b>	None	<b>Vibration Sensor Indicator:</b>	No Vibration Sensor
<b>Heater Indicator:</b>	No Heater	<b>Winding Thermal 1:</b>	None
<b>Insulation Class:</b>	B	<b>Winding Thermal 2:</b>	None

Nameplate NP2717L											
CAT NO	M3311T-58										
SPEC.	37B101R166H1										
HP	7.5							PH	3		
VOLTS	400										
AMP	11.5										
RPM	1465										
FRAME	213T				HZ	50			I.P.	23	
SER.F.	1.15			CODE	J		DES	B		CL	B
NEMA-NOM-EFF	87.7									% (100%)	
PF	78				USABLE AT 208V	N/A					
RATING	40C AMB-CONT						CC				
DE BRG	6307				ODE	6206					
ENCL	OPSB			SN							
BLANK	IE2-88.2(75%)86.5(50%)										

**AC Induction Motor Performance Data**

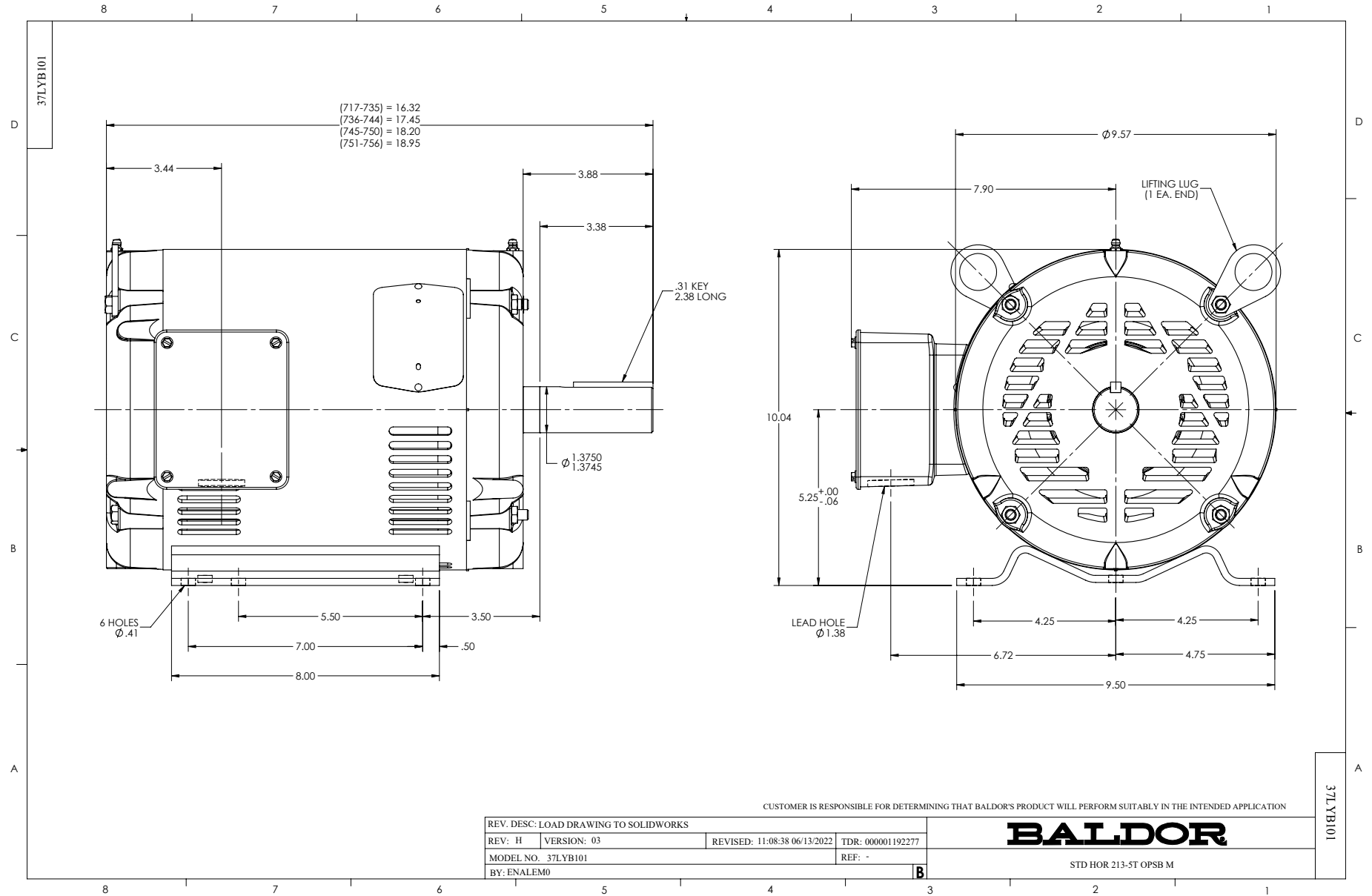
Record # 35249

Typical performance - not guaranteed values

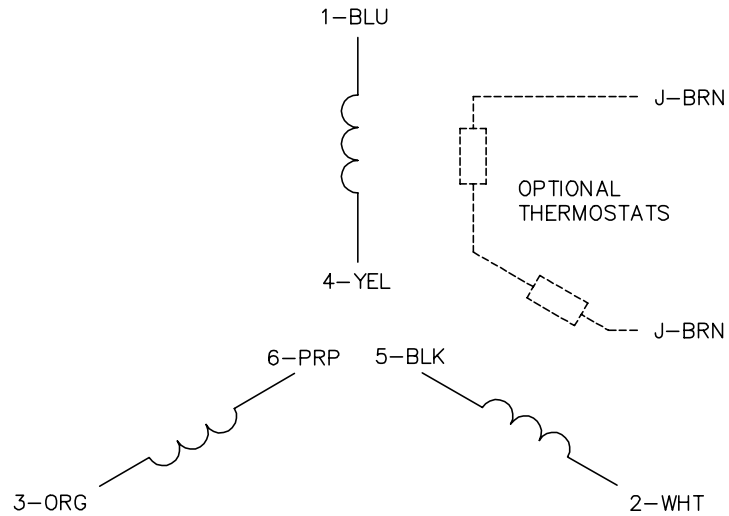
<b>Winding:</b> 37WGR166-R001		<b>Type:</b> 3734M		<b>Enclosure:</b> OPSB	
<b>Nameplate Data</b>			<b>400 V, 50 Hz: Single Voltage Motor</b>		
<b>Rated Output (HP)</b>	7.5	<b>Full Load Torque</b>	26.81 LB-FT		
<b>Volts</b>	400	<b>Start Configuration</b>	direct on line		
<b>Full Load Amps</b>	11.5	<b>Breakdown Torque</b>	81.22 LB-FT		
<b>R.P.M.</b>	1465	<b>Pull-up Torque</b>	44.25 LB-FT		
<b>Hz</b>	50 <b>Phase</b>	3	<b>Locked-rotor Torque</b>	57.97 LB-FT	
<b>NEMA Design Code</b>	<b>B KVA Code</b>	J	<b>Starting Current</b>	77.94 A	
<b>Service Factor (S.F.)</b>	1.15	<b>No-load Current</b>	5.78 A		
<b>NEMA Nom. Eff.</b>	87.7	<b>Power Factor</b>	78	<b>Line-line Res. @ 25°C</b>	1.44 Ω
<b>Rating - Duty</b>	40C AMB-CONT		<b>Temp. Rise @ Rated Load</b>	55°C	
<b>S.F. Amps</b>			<b>Temp. Rise @ S.F. Load</b>	67°C	
			<b>Locked-rotor Power Factor</b>	43.4	
			<b>Rotor inertia</b>	0.836 LB-FT <sup>2</sup>	

**Load Characteristics 400 V, 50 Hz, 7.5 HP**

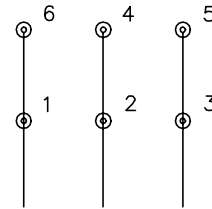
<b>% of Rated Load</b>	<b>25</b>	<b>50</b>	<b>75</b>	<b>100</b>	<b>125</b>	<b>150</b>	<b>S.F.</b>
<b>Power Factor</b>	41	62	74	79	82	83	81
<b>Efficiency</b>	79.9	86.7	87.8	88.2	87.3	84.7	87.8
<b>Speed</b>	1492	1484	1475	1466	1455	1441	1459
<b>Line amperes</b>	6.24	7.5	9.3	11.57	14.07	17.27	13



CD0382

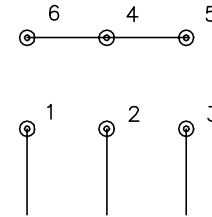


RUN CONNECTION  
(1D)



LINE

START CONNECTION  
(1Y)



LINE

NOTES:

1. INTERCHANGE ANY TWO LINE LEADS TO REVERSE ROTATION.
2. OPTIONAL THERMOSTATS ARE PROVIDED WHEN SPECIFIED.
3. ACTUAL NUMBER OF INTERNAL PARALLEL CIRCUITS MAY BE A MULTIPLE OF THOSE SHOWN ABOVE.
4. LEAD COLORS ARE OPTIONAL. LEADS MUST ALWAYS BE NUMBERED AS SHOWN.
5. FOR ACROSS-THE-LINE STARTING, USE 'RUN' CONNECTION.

CD0382

REV. DESC: ADD CLASS CONN00000007		
REV. LTR: F	VERSION: 01	TDR: 000001099922
FILE: \AAA\00005\243	REVISED: 09:05:32 02/19/2019	BY: ENBRIRO
MTL: -	© □	

**BALDOR - RELIANCE**®

3PH, SV, 6 LEADS, Y START/D RUN

SH 1 of 1