

**BALDOR® • RELIANCE** 

**Product Information Packet**

**M3702T**

**2HP,855RPM,3PH,60HZ,213T,3724M,TEFC,F1**

Part Detail							
Revision:	N	Status:	NLA/A	Change #:		Proprietary:	No
Type:	AC	Elec. Spec:	37WGT938	CD Diagram:	CD0005	Mfg Plant:	
Mech. Spec:	37A001	Layout:	37LYA001	Poles:	08	Created Date:	
Base:	RG	Eff. Date:	03-08-2016	Leads:	9#14		

Specs			
Catalog Number:	M3702T	Heater Indicator:	No Heater
Enclosure:	TEFC	Insulation Class:	F
Frame:	213T	Inverter Code:	Not Inverter
Frame Material:	Steel	KVA Code:	H
Motor Letter Type:	Three Phase	Lifting Lugs:	Standard Lifting Lugs
Output @ Frequency:	2.000 HP @ 60 HZ	Locked Bearing Indicator:	No Locked Bearing
Synchronous Speed @ Frequency:	900 RPM @ 60 HZ	Motor Lead Quantity/Wire Size:	9 @ 14 AWG
Voltage @ Frequency:	230.0 V @ 60 HZ	Motor Lead Exit:	Ko Box
	208.0 V @ 60 HZ	Motor Lead Termination:	Flying Leads
	460.0 V @ 60 HZ	Motor Type:	3724M
XP Division:	Not Applicable	Mounting Arrangement:	F1
Agency Approvals:	CSA	Power Factor:	65
	UR	Product Family:	General Purpose
Auxillary Box:	No Auxillary Box	Pulley End Bearing Type:	Ball
Auxillary Box Lead Termination:	None	Pulley Face Code:	Standard
Base Indicator:	RG	Pulley Shaft Indicator:	Standard
Bearing Grease Type:	Polyrex EM (-20F +300F)	Rodent Screen:	None
Blower:	None	Shaft Extension Location:	Pulley End

<b>Current @ Voltage:</b>	7.000 A @ 230.0 V	<b>Shaft Ground Indicator:</b>	No Shaft Grounding
	7.600 A @ 208.0 V	<b>Shaft Rotation:</b>	Reversible
	3.500 A @ 460.0 V	<b>Shaft Slinger Indicator:</b>	No Slinger
<b>Design Code:</b>	B	<b>Speed Code:</b>	Single Speed
<b>Drip Cover:</b>	No Drip Cover	<b>Motor Standards:</b>	NEMA
<b>Duty Rating:</b>	CONT	<b>Starting Method:</b>	Direct on line
<b>Electrically Isolated Bearing:</b>	Not Electrically Isolated	<b>Thermal Device - Bearing:</b>	None
<b>Feedback Device:</b>	NO FEEDBACK	<b>Thermal Device - Winding:</b>	None
<b>Front Face Code:</b>	Standard	<b>Vibration Sensor Indicator:</b>	No Vibration Sensor
<b>Front Shaft Indicator:</b>	None	<b>Winding Thermal 1:</b>	None
		<b>Winding Thermal 2:</b>	None

Nameplate NP1256L										
CAT.NO.	M3702T									
SPEC.	37A001T938									
HP	2									
VOLTS	208-230/460									
AMP	7.6-7/3.5									
RPM	855									
FRAME	213T				HZ	60			PH	3
SER.F.	1.15		CODE	H	DES	B		CLASS	F	
NEMA-NOM-EFF	82.5		PF	65						
RATING	40C AMB-CONT									
CC	010A				USABLE AT 208V			N/A		
DE	6307			ODE	6206					
ENCL	TEFC		SN							

**AC Induction Motor Performance Data**

Record # 19983

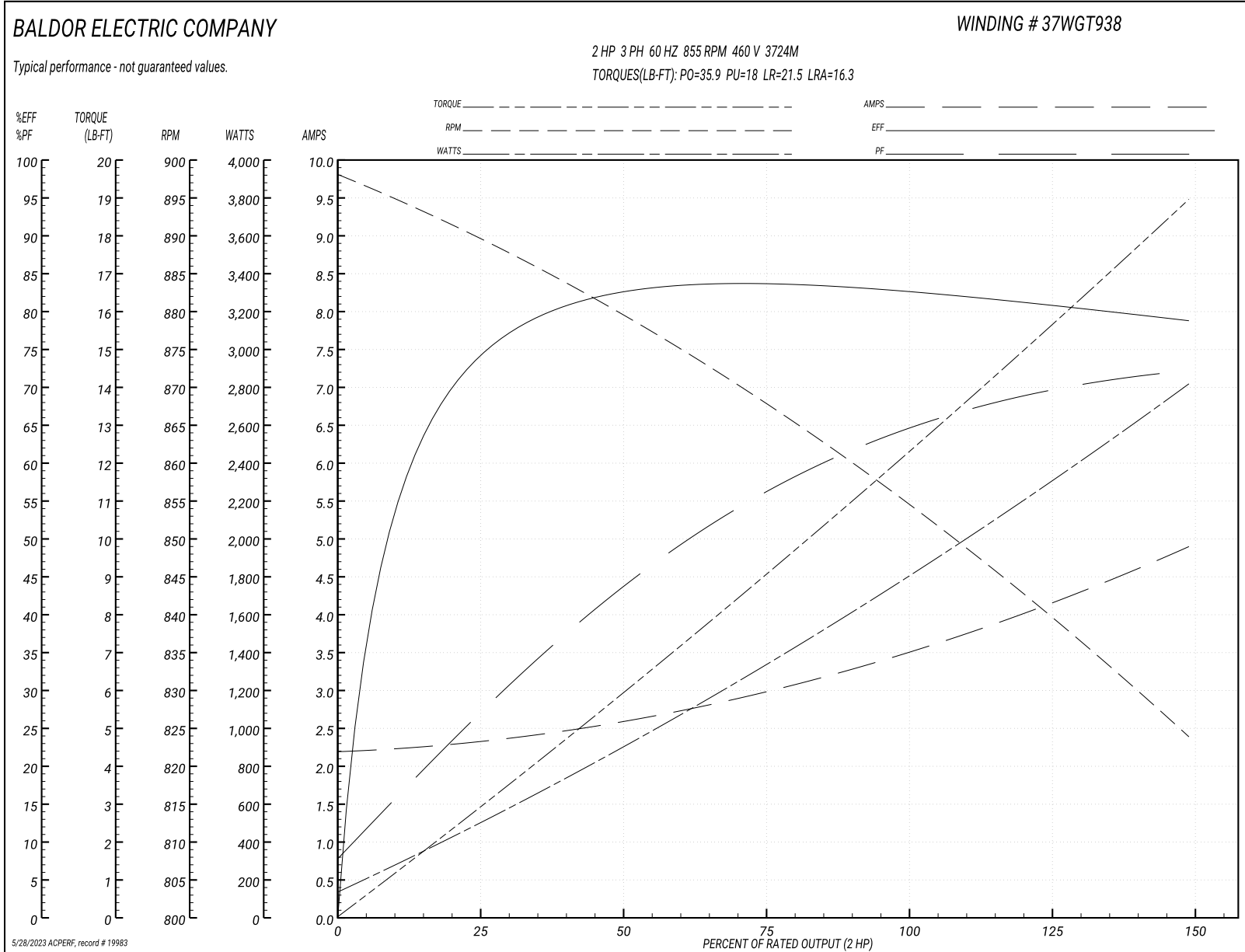
Typical performance - not guaranteed values

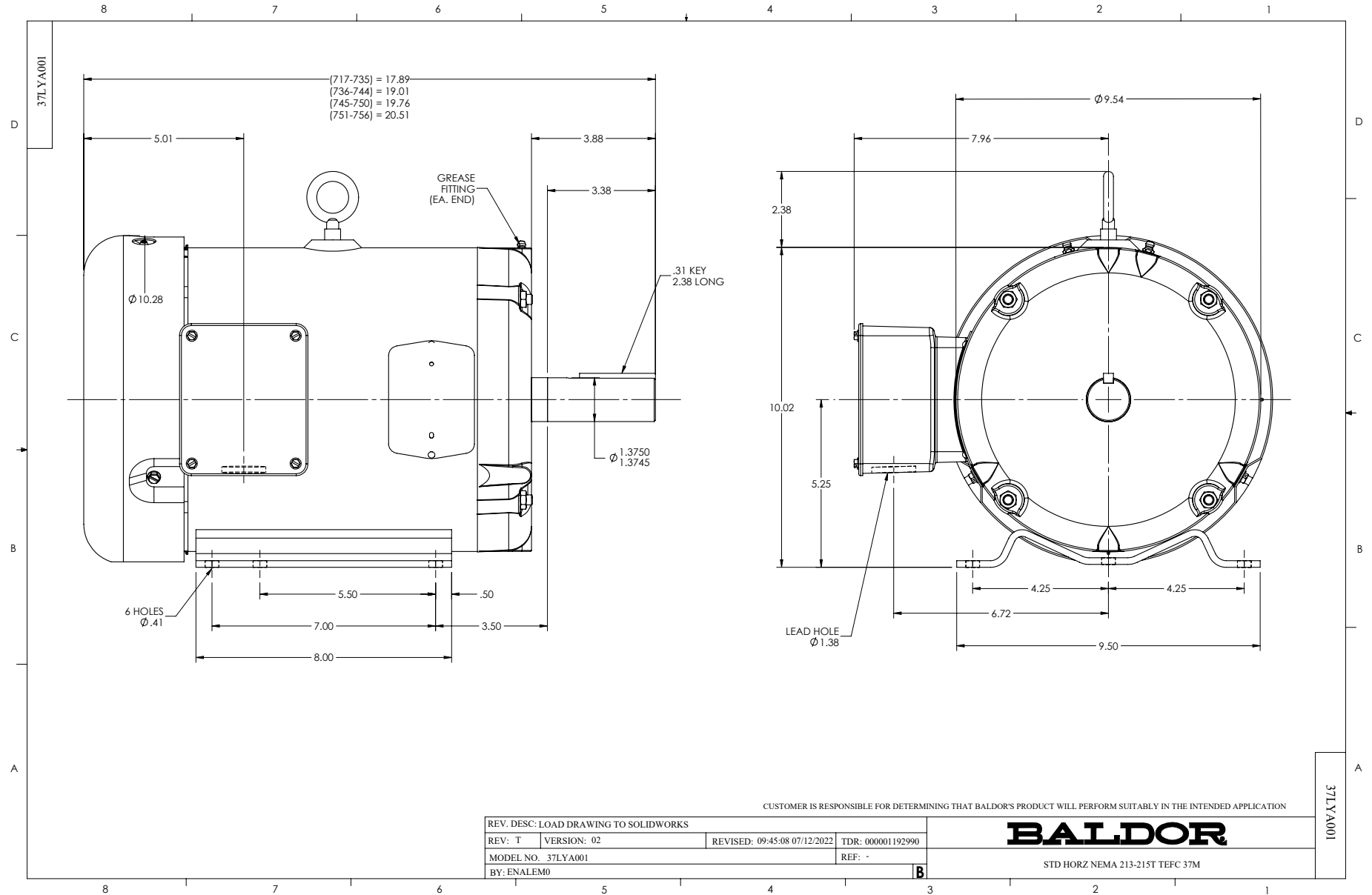
<b>Winding: 37WGT938-R001</b>		<b>Type: 3724M</b>		<b>Enclosure: TEFC</b>	
<b>Nameplate Data</b>			<b>460 V, 60 Hz: High Voltage Connection</b>		
<b>Rated Output (HP)</b>	2	<b>Full Load Torque</b>	12.2 LB-FT		
<b>Volts</b>	208-230/460	<b>Start Configuration</b>	direct on line		
<b>Full Load Amps</b>	7.6-7/3.5	<b>Breakdown Torque</b>	35.9 LB-FT		
<b>R.P.M.</b>	855	<b>Pull-up Torque</b>	18 LB-FT		
<b>Hz</b>	60 <b>Phase</b>	3	<b>Locked-rotor Torque</b>	21.5 LB-FT	
<b>NEMA Design Code</b>	<b>B KVA Code</b>	H	<b>Starting Current</b>	16.3 A	
<b>Service Factor (S.F.)</b>	1.15	<b>No-load Current</b>	2.2 A		
<b>NEMA Nom. Eff.</b>	82.5	<b>Power Factor</b>	65	<b>Line-line Res. @ 25°C</b>	6.6 Ω
<b>Rating - Duty</b>	40C AMB-CONT	<b>Temp. Rise @ Rated Load</b>	50°C		
<b>S.F. Amps</b>		<b>Temp. Rise @ S.F. Load</b>	62°C		
		<b>Locked-rotor Power Factor</b>	37		
		<b>Rotor inertia</b>	0.597 LB-FT <sup>2</sup>		

**Load Characteristics 460 V, 60 Hz, 2 HP**

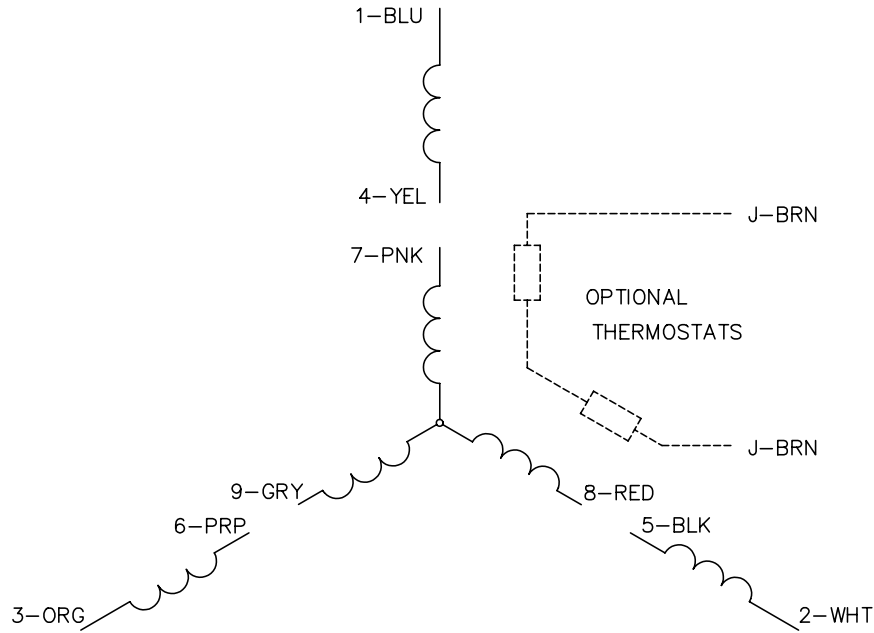
<b>% of Rated Load</b>	<b>25</b>	<b>50</b>	<b>75</b>	<b>100</b>	<b>125</b>	<b>150</b>	<b>S.F.</b>
<b>Power Factor</b>	28	44	56	65	70	73	68
<b>Efficiency</b>	73.9	81.9	83.6	83.1	81.4	78.7	82.1
<b>Speed</b>	889	879	868	856	841	823	847
<b>Line amperes</b>	2.3	2.59	2.99	3.49	4.11	4.91	3.86

Performance Graph at 460V, 60Hz, 2.0HP Typical performance - Not guaranteed values

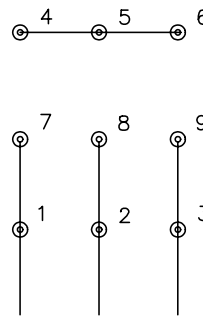




CD0005

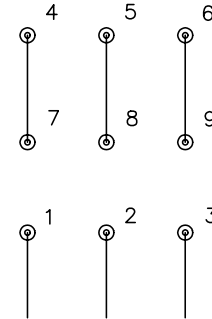


LOW VOLTAGE  
(2Y)



LINE

HIGH VOLTAGE  
(1Y)



LINE

NOTES:

1. INTERCHANGE ANY TWO LINE LEADS TO REVERSE ROTATION.
2. OPTIONAL THERMOSTATS ARE PROVIDED WHEN SPECIFIED.
3. ACTUAL NUMBER OF INTERNAL PARALLEL CIRCUITS MAY BE A MULTIPLE OF THOSE SHOWN ABOVE.
4. LEAD COLORS ARE OPTIONAL. LEADS MUST ALWAYS BE NUMBERED AS SHOWN.

REV. DESC: REVISE TO SHOW OPTIONAL COLORS			
REV. LTR: E	BY: JLP	REVISED: 01/19/99 10:15	TDR: 0171435
90000		FILE: AAA00005140	MDL: -
		MTL: -	

**BALDOR ELECTRIC Co.**

3PH, DV, 9 LEADS

CD0005