

BALDOR® • RELIANCE 

Product Information Packet

M3711T-58

10HP,2900RPM,3PH,50HZ,215T,3748M,TEFC,F1

| Part Detail | | | | | | | |
|-------------|--------|-------------|------------|-------------|--------|---------------|------------|
| Revision: | L | Status: | NLA/A | Change #: | | Proprietary: | No |
| Type: | AC | Elec. Spec: | 37WGR162 | CD Diagram: | CD0382 | Mfg Plant: | |
| Mech. Spec: | 37A001 | Layout: | 37LYA001 | Poles: | 02 | Created Date: | 09-21-2011 |
| Base: | RG | Eff. Date: | 12-23-2014 | Leads: | 6#14 | | |

| Specs | | | |
|---------------------------------|-------------------------|--------------------------------|-----------------------|
| Catalog Number: | M3711T-58 | Inverter Code: | Inverter Ready |
| Enclosure: | TEFC | KVA Code: | K |
| Frame: | 215T | Lifting Lugs: | Standard Lifting Lugs |
| Frame Material: | Steel | Locked Bearing Indicator: | No Locked Bearing |
| Motor Letter Type: | Three Phase | Motor Lead Quantity/Wire Size: | 6 @ 14 AWG |
| Output @ Frequency: | 10.000 HP @ 50 HZ | Motor Lead Exit: | Ko Box |
| Synchronous Speed @ Frequency: | 3000 RPM @ 50 HZ | Motor Lead Termination: | Flying Leads |
| Voltage @ Frequency: | 400.0 V @ 50 HZ | Motor Type: | 3748M |
| XP Division: | Not Applicable | Mounting Arrangement: | F1 |
| Agency Approvals: | CE | Power Factor: | 89 |
| | CSA | Product Family: | General Purpose |
| | UR | Pulley End Bearing Type: | Ball |
| Auxillary Box: | No Auxillary Box | Pulley Face Code: | Standard |
| Auxillary Box Lead Termination: | None | Pulley Shaft Indicator: | Standard |
| Base Indicator: | RG | Rodent Screen: | None |
| Bearing Grease Type: | Polyrex EM (-20F +300F) | RoHS Status: | ROHS COMPLIANT |
| Blower: | None | Shaft Extension Location: | Pulley End |
| Current @ Voltage: | 13.800 A @ 400.0 V | Shaft Ground Indicator: | No Shaft Grounding |

| | | | |
|---------------------------------------|---------------------------|------------------------------------|-----------------------|
| Design Code: | A | Shaft Rotation: | Reversible |
| Drip Cover: | No Drip Cover | Shaft Slinger Indicator: | No Slinger |
| Duty Rating: | CONT | Speed Code: | Single Speed |
| Electrically Isolated Bearing: | Not Electrically Isolated | Motor Standards: | NEMA |
| Feedback Device: | NO FEEDBACK | Starting Method: | Wye Start - Delta Run |
| Front Face Code: | Standard | Thermal Device - Bearing: | None |
| Front Shaft Indicator: | None | Thermal Device - Winding: | None |
| Heater Indicator: | No Heater | Vibration Sensor Indicator: | No Vibration Sensor |
| Insulation Class: | F | Winding Thermal 1: | None |
| | | Winding Thermal 2: | None |

| Nameplate NP2717L | | | | | | | |
|-------------------|------------------------|----------------|----|------|----|----|----------|
| CAT NO | M3711T-58 | | | | | | |
| SPEC. | 37A001R162H1 | | | | | | |
| HP | 10 | PH | 3 | | | | |
| VOLTS | 400 | | | | | | |
| AMP | 13.8 | | | | | | |
| RPM | 2900 | | | | | | |
| FRAME | 215T | HZ | 50 | I.P. | 54 | | |
| SER.F. | 1.15 | CODE | K | DES | A | CL | F |
| NEMA-NOM-EFF | 88.5 | | | | | | % (100%) |
| PF | 89 | USABLE AT 208V | | N/A | | | |
| RATING | 40C AMB-CONT | CC | | | | | |
| DE BRG | 6307 | ODE | | 6206 | | | |
| ENCL | TEFC | SN | | | | | |
| BLANK | IE2-88.0(75%)85.5(50%) | | | | | | |
| | | | | | | | |
| | | | | | | | |

AC Induction Motor Performance Data

Record # 35210

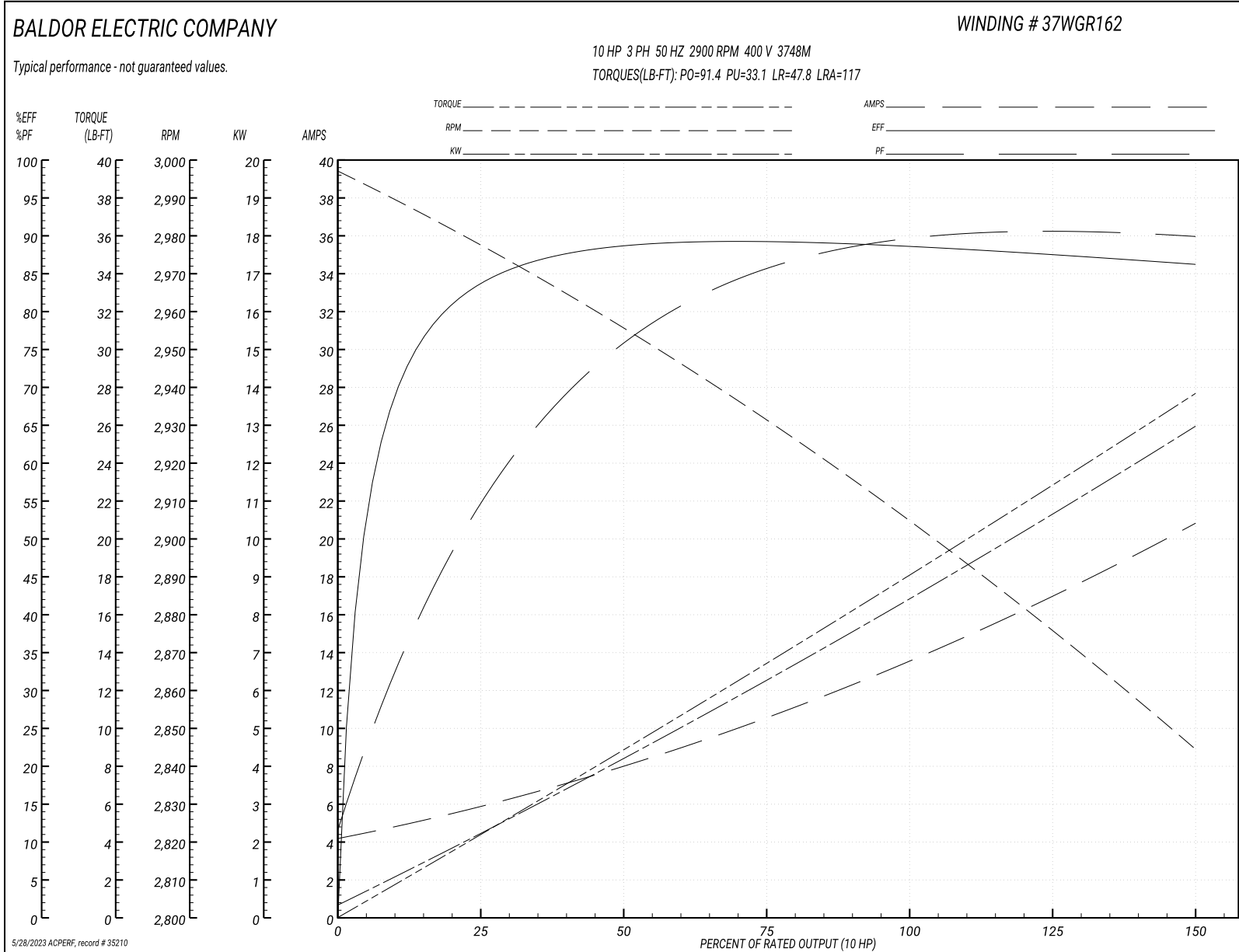
Typical performance - not guaranteed values

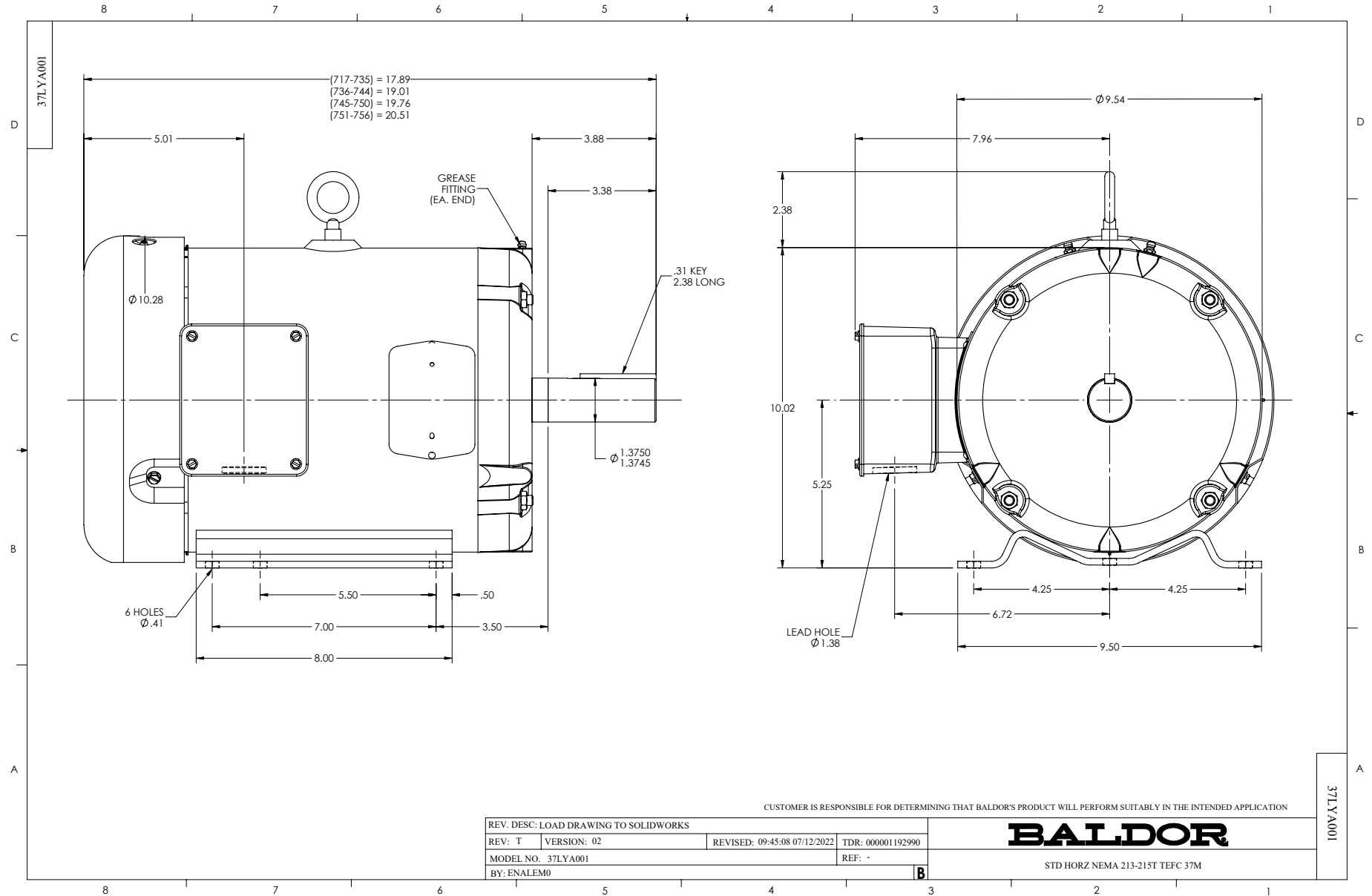
| Winding: 37WGR162-R001 | | Type: 3748M | | Enclosure: TEFC | |
|-------------------------------|--------------------------|----------------------------|---|--------------------------|--|
| Nameplate Data | | | 400 V, 50 Hz: Single Voltage Motor | | |
| Rated Output (HP) | 10 | Full Load Torque | 18.1 LB-FT | | |
| Volts | 400 | Start Configuration | direct on line | | |
| Full Load Amps | 13.8 | Breakdown Torque | 91.4 LB-FT | | |
| R.P.M. | 2900 | Pull-up Torque | 33.1 LB-FT | | |
| Hz | 50 Phase | 3 | Locked-rotor Torque | 47.8 LB-FT | |
| NEMA Design Code | A KVA Code | K | Starting Current | 117 A | |
| Service Factor (S.F.) | 1.15 | No-load Current | 4.37 A | | |
| NEMA Nom. Eff. | 88.5 Power Factor | 89 | Line-line Res. @ 25°C | 0.573 Ω | |
| Rating - Duty | 40C AMB-CONT | | Temp. Rise @ Rated Load | 60°C | |
| S.F. Amps | | | Temp. Rise @ S.F. Load | 74°C | |
| | | | Locked-rotor Power Factor | 34 | |
| | | | Rotor inertia | 0.437 LB-FT ² | |

Load Characteristics 400 V, 50 Hz, 10 HP

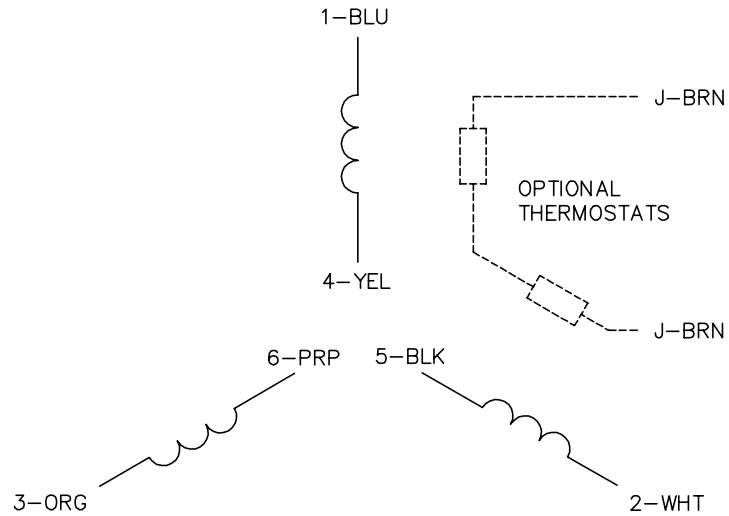
| % of Rated Load | 25 | 50 | 75 | 100 | 125 | 150 | S.F. |
|------------------------|-----------|-----------|-----------|------------|------------|------------|-------------|
| Power Factor | 60 | 78 | 85 | 88 | 91 | 90 | 90 |
| Efficiency | 81.8 | 85.5 | 88.1 | 88.5 | 87.8 | 86 | 88.1 |
| Speed | 2976 | 2954 | 2931 | 2905 | 2875 | 2844 | 2887 |
| Line amperes | 5.64 | 8 | 10.8 | 13.8 | 17 | 20.8 | 15.7 |

Performance Graph at 400V, 50Hz, 10.0HP Typical performance - Not guaranteed values

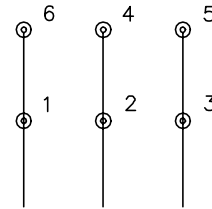




CD0382

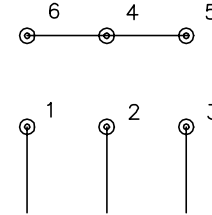


RUN CONNECTION (1D)



LINE

START CONNECTION (1Y)



LINE

NOTES:

1. INTERCHANGE ANY TWO LINE LEADS TO REVERSE ROTATION.
2. OPTIONAL THERMOSTATS ARE PROVIDED WHEN SPECIFIED.
3. ACTUAL NUMBER OF INTERNAL PARALLEL CIRCUITS MAY BE A MULTIPLE OF THOSE SHOWN ABOVE.
4. LEAD COLORS ARE OPTIONAL. LEADS MUST ALWAYS BE NUMBERED AS SHOWN.
5. FOR ACROSS-THE-LINE STARTING, USE 'RUN' CONNECTION.

CD0382

| | | |
|-----------------------------------|------------------------------|-------------------|
| REV. DESC: ADD CLASS CONN00000007 | | |
| REV. LTR: F | VERSION: 01 | TDR: 000001099922 |
| FILE: \AAA\00005\243 | REVISED: 09:05:32 02/19/2019 | BY: ENBRIRO |
| MTL: - | © □ | |

BALDOR - RELIANCE®

3PH, SV, 6 LEADS, Y START/D RUN

SH 1 of 1