

BALDOR® • RELIANCE 

Product Information Packet

M3712

2HP, 1165RPM, 3PH, 60HZ, 213, 3633M, TEFC, F1, N

Part Detail							
Revision:	E	Status:	NLA/A	Change #:		Proprietary:	No
Type:	AC	Elec. Spec:	36WGS946	CD Diagram:	CD0005	Mfg Plant:	
Mech. Spec:	36G890	Layout:	36LYG890	Poles:	06	Created Date:	07-23-2012
Base:	RG	Eff. Date:	03-08-2016	Leads:	9#16		

Specs			
Catalog Number:	M3712	Heater Indicator:	No Heater
Enclosure:	TEFC	Insulation Class:	F
Frame:	213	Inverter Code:	Not Inverter
Frame Material:	Steel	KVA Code:	K
Motor Letter Type:	Three Phase	Lifting Lugs:	No Lifting Lugs
Output @ Frequency:	2.000 HP @ 60 HZ	Locked Bearing Indicator:	No Locked Bearing
Synchronous Speed @ Frequency:	1200 RPM @ 60 HZ	Motor Lead Quantity/Wire Size:	9 @ 16 AWG
Voltage @ Frequency:	460.0 V @ 60 HZ	Motor Lead Exit:	Ko Box
	230.0 V @ 60 HZ	Motor Lead Termination:	Flying Leads
	208.0 V @ 60 HZ	Motor Type:	3633M
Haz Area Class and Group:	None	Mounting Arrangement:	F1
Haz Area Division:	Not Applicable	Power Factor:	65
Agency Approvals:	CSA	Product Family:	General Purpose
	UR	Pulley End Bearing Type:	Ball
Auxillary Box:	No Auxillary Box	Pulley Face Code:	Standard
Auxillary Box Lead Termination:	None	Pulley Shaft Indicator:	Standard
Base Indicator:	Rigid	Rodent Screen:	None
Bearing Grease Type:	Polyrex EM (-20F +300F)	Shaft Extension Location:	Pulley End

Blower:	None	Shaft Ground Indicator:	No Shaft Grounding
Current @ Voltage:	6.800 A @ 230.0 V	Shaft Rotation:	Reversible
	6.800 A @ 208.0 V	Shaft Slinger Indicator:	No Slinger
	3.400 A @ 460.0 V	Speed Code:	Single Speed
Design Code:	B	Motor Standards:	NEMA
Drip Cover:	No Drip Cover	Starting Method:	Direct on line
Duty Rating:	CONT	Thermal Device - Bearing:	None
Electrically Isolated Bearing:	Not Electrically Isolated	Thermal Device - Winding:	None
Feedback Device:	NO FEEDBACK	Vibration Sensor Indicator:	No Vibration Sensor
Front Face Code:	Standard	Winding Thermal 1:	None
Front Shaft Indicator:	None	Winding Thermal 2:	None

Nameplate NP1256L										
CAT.NO.	M3712									
SPEC.	36G890S946H1									
HP	2									
VOLTS	208-230/460									
AMP	6.8/3.4									
RPM	1165									
FRAME	213				HZ	60			PH	3
SER.F.	1.15		CODE	K	DES	B		CLASS	F	
NEMA-NOM-EFF	86.5		PF	65						
RATING	40C AMB-CONT									
CC	010A									
DE	6206				ODE	6205				
ENCL	TEFC		SN							

AC Induction Motor Performance Data

Record # 39219

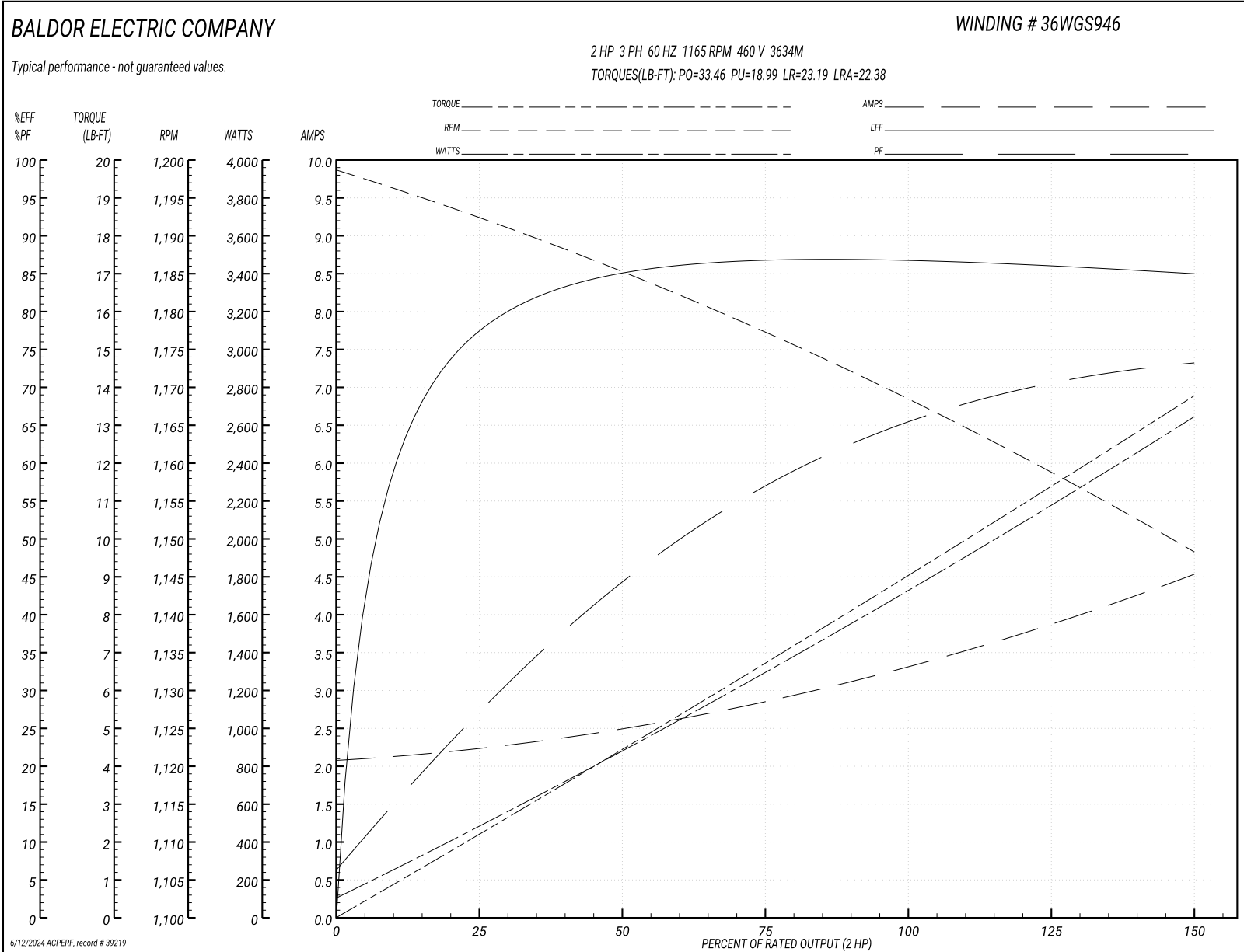
Typical performance - not guaranteed values

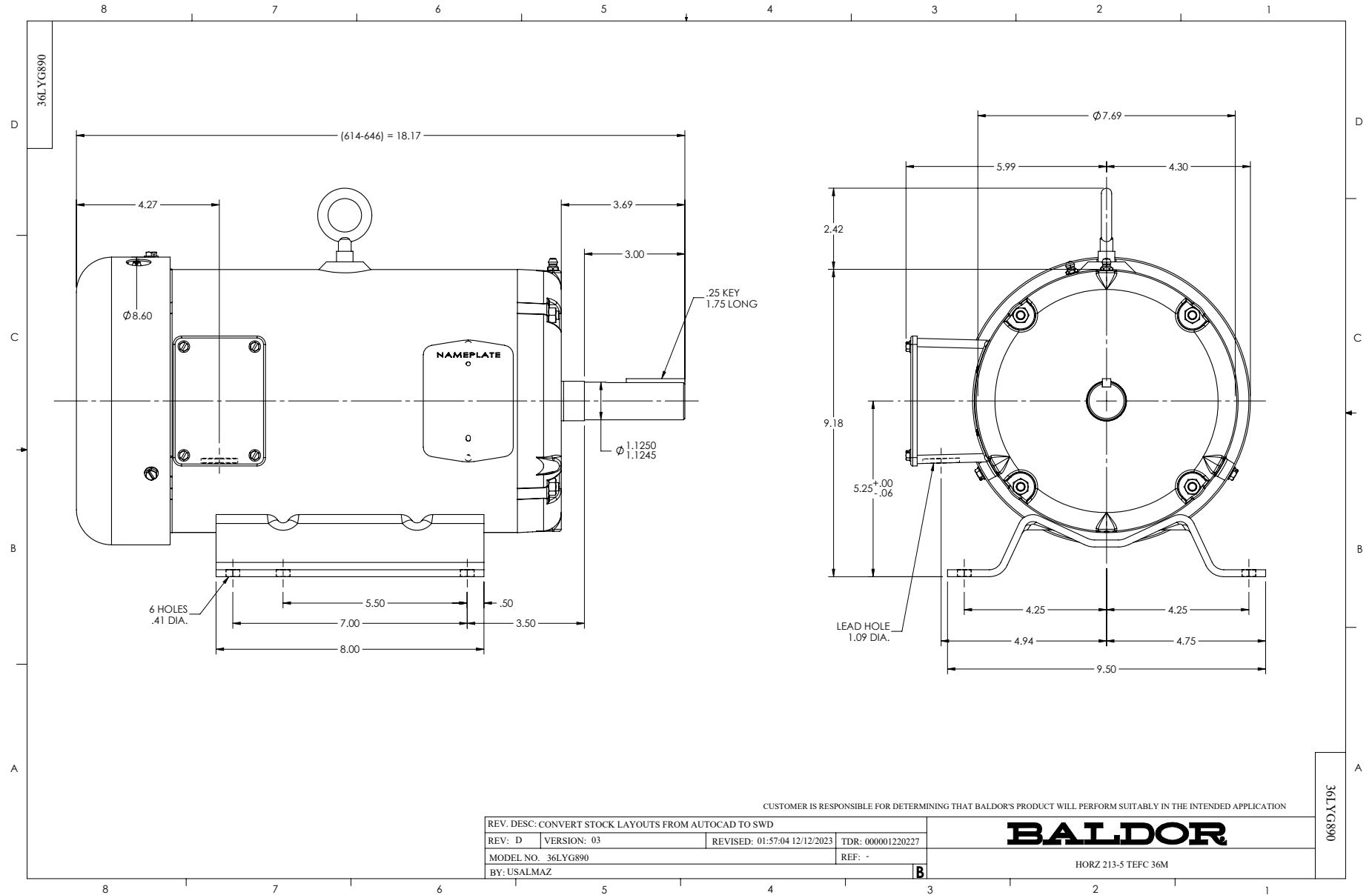
Winding: 36WGS946-R001		Type: 3634M		Enclosure: TEFC	
Nameplate Data			460 V, 60 Hz: High Voltage Connection		
Rated Output (HP)	2	Full Load Torque	9.01 LB-FT		
Volts	208-230/460	Start Configuration	direct on line		
Full Load Amps	6.8/3.4	Breakdown Torque	33.46 LB-FT		
R.P.M.	1165	Pull-up Torque	18.99 LB-FT		
Hz	60 Phase	3	Locked-rotor Torque	23.19 LB-FT	
NEMA Design Code	B KVA Code	K	Starting Current	22.38 A	
Service Factor (S.F.)	1.15	No-load Current	2.1 A		
NEMA Nom. Eff.	86.5	Power Factor	65	Line-line Res. @ 25°C	5.4 Ω
Rating - Duty	40C AMB-CONT		Temp. Rise @ Rated Load	45°C	
S.F. Amps			Temp. Rise @ S.F. Load	53°C	
			Locked-rotor Power Factor	30.9	
			Rotor inertia	0.319 LB-FT ²	

Load Characteristics 460 V, 60 Hz, 2 HP

% of Rated Load	25	50	75	100	125	150	S.F.
Power Factor	28	45	57	65	70	74	68
Efficiency	77	85	86.7	86.8	86.2	84.9	86.3
Speed	1192	1185	1177	1169	1159	1148	1163
Line amperes	2.21	2.48	2.86	3.34	3.88	4.52	3.68

Performance Graph at 460V, 60Hz, 2.0HP Typical performance - Not guaranteed values

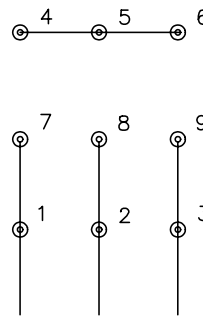




CD0005

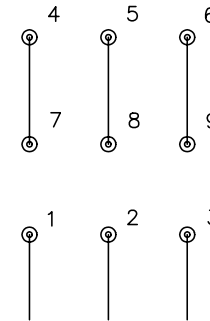


LOW VOLTAGE
(2Y)



LINE

HIGH VOLTAGE
(1Y)



LINE

NOTES:

1. INTERCHANGE ANY TWO LINE LEADS TO REVERSE ROTATION.
2. OPTIONAL THERMOSTATS ARE PROVIDED WHEN SPECIFIED.
3. ACTUAL NUMBER OF INTERNAL PARALLEL CIRCUITS MAY BE A MULTIPLE OF THOSE SHOWN ABOVE.
4. LEAD COLORS ARE OPTIONAL. LEADS MUST ALWAYS BE NUMBERED AS SHOWN.

REV. DESC: REVISE TO SHOW OPTIONAL COLORS			
REV. LTR: E	BY: JLP	REVISED: 01/19/99 10:15	TDR: 0171435
90000		FILE: AAA00005140	MDL: -
		MTL: -	

BALDOR ELECTRIC Co.

3PH, DV, 9 LEADS

CD0005