

**BALDOR® • RELIANCE** 

**Product Information Packet**

**OF3407T**

**7.5HP, 1125RPM, 3PH, 60HZ, 254T, 0932M, OPEN**

Part Detail							
Revision:	AE	Status:	INA/A	Change #:		Proprietary:	No
Type:	AC	Elec. Spec:	09WGY173	CD Diagram:	CD0321	Mfg Plant:	
Mech. Spec:	09G79	Layout:	09LYG079	Poles:	06	Created Date:	
Base:	RG	Eff. Date:	03-09-2021	Leads:	12#12 ML4400B12		Y

Specs			
Catalog Number:	OF3407T	Heater Indicator:	No Heater
Enclosure:	OPEN	Insulation Class:	F
Frame:	254T	Inverter Code:	Not Inverter
Frame Material:	Iron	KVA Code:	H
Output @ Frequency:	7.500 HP @ 60 HZ	Lifting Lugs:	Standard Lifting Lugs
Synchronous Speed @ Frequency:	1200 RPM @ 60 HZ	Locked Bearing Indicator:	No Locked Bearing
Voltage @ Frequency:	230.0 V @ 60 HZ	Motor Lead Quantity/Wire Size:	12 @ 12 AWG
	460.0 V @ 60 HZ	Motor Lead Exit:	Ko Box
	796.0 V @ 60 HZ	Motor Lead Termination:	Flying Leads
XP Class and Group:	None	Motor Type:	0932M
XP Division:	Not Applicable	Mounting Arrangement:	F2
Agency Approvals:	UR	Power Factor:	67
	CSA	Product Family:	Oil Field Pump Motors(Not DC)
Auxillary Box:	No Auxillary Box	Pulley End Bearing Type:	Ball
Auxillary Box Lead Termination:	None	Pulley Face Code:	Standard
Base Indicator:	Rigid	Pulley Shaft Indicator:	Standard
Bearing Grease Type:	Polyrex EM (-20F +300F)	Rodent Screen:	Included
Blower:	None	Shaft Extension Location:	Pulley End

<b>Current @ Voltage:</b>	12.500 A @ 460.0 V	<b>Shaft Ground Indicator:</b>	No Shaft Grounding
	25.000 A @ 230.0 V	<b>Shaft Rotation:</b>	Reversible
	7.200 A @ 796.0 V	<b>Shaft Slinger Indicator:</b>	No Slinger
<b>Design Code:</b>	D	<b>Speed Code:</b>	Single Speed
<b>Drip Cover:</b>	No Drip Cover	<b>Motor Standards:</b>	NEMA
<b>Duty Rating:</b>	CONT	<b>Starting Method:</b>	Direct on line
<b>Electrically Isolated Bearing:</b>	Not Electrically Isolated	<b>Thermal Device - Bearing:</b>	NONE (OLD)
<b>Feedback Device:</b>	NO FEEDBACK	<b>Thermal Device - Winding:</b>	Normally Closed Thermostat
<b>Front Face Code:</b>	Standard	<b>Vibration Sensor Indicator:</b>	No Vibration Sensor
<b>Front Shaft Indicator:</b>	None	<b>Winding Thermal 1:</b>	None
		<b>Winding Thermal 2:</b>	None

## Nameplate NP2961E

CAT.NO.					
SPEC.	09G079Y173				
HP	7.5				
VOLTS	230/460/796				
AMP	25/12.5/7.2				
RPM	1125				
FRAME	254T	HZ	60	PH	3
SER.F.	1.15	CODE	H	DES	D
NEMA-NOM-EFF	84	PF	67	CLASS	F
RATING	40C AMB-CONT				
CC					USABLE AT 208V
DE	6309	ODE	6208		
ENCL	OPEN	SN			

<b>Nameplate NP0090E</b>	
<b>FRONT</b>	6208
<b>PULLEY</b>	6309
<b>LUBRICATE WITH</b>	
<b>GREASE</b>	POLYREX EM

**AC Induction Motor Performance Data**

Record # 1884

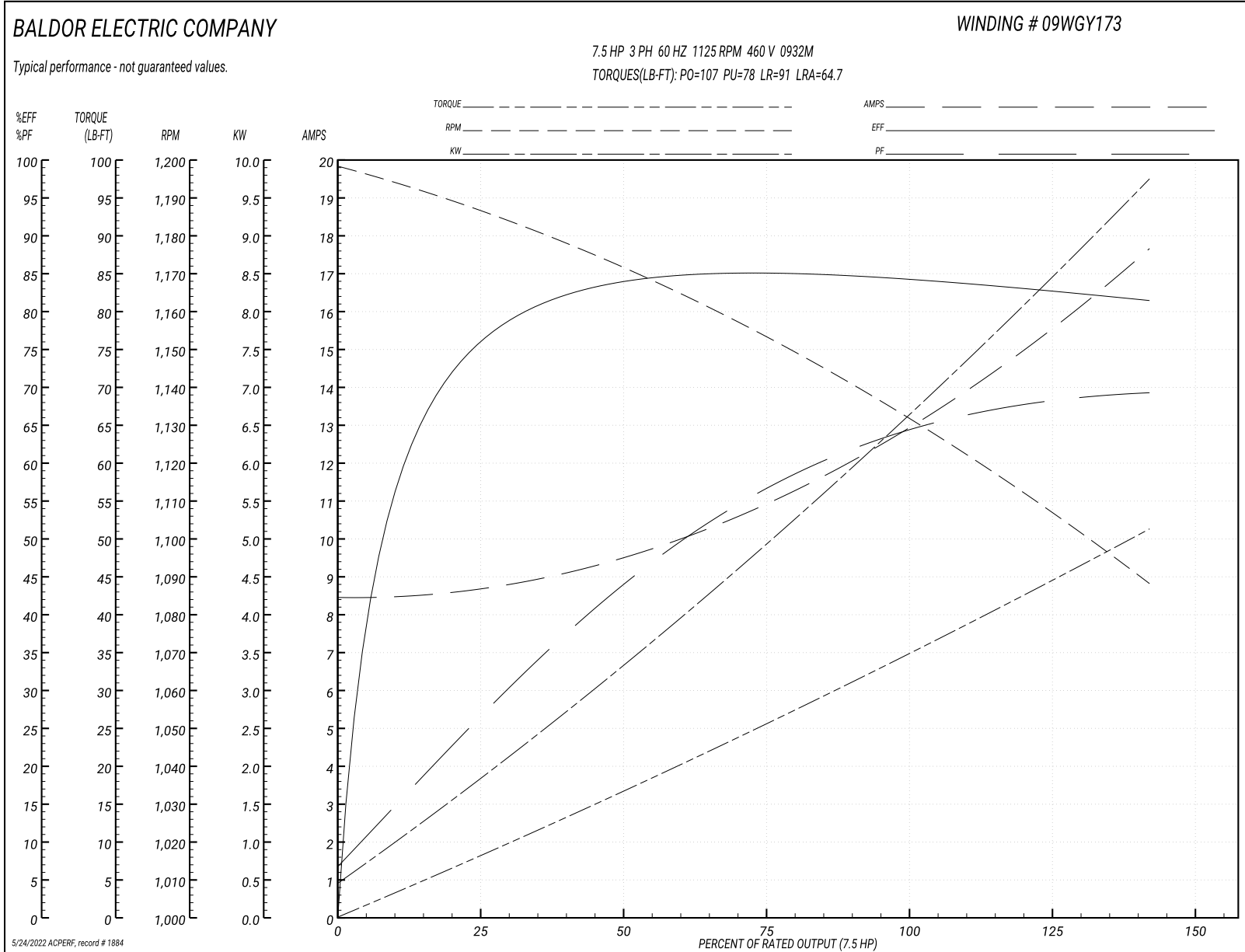
Typical performance - not guaranteed values

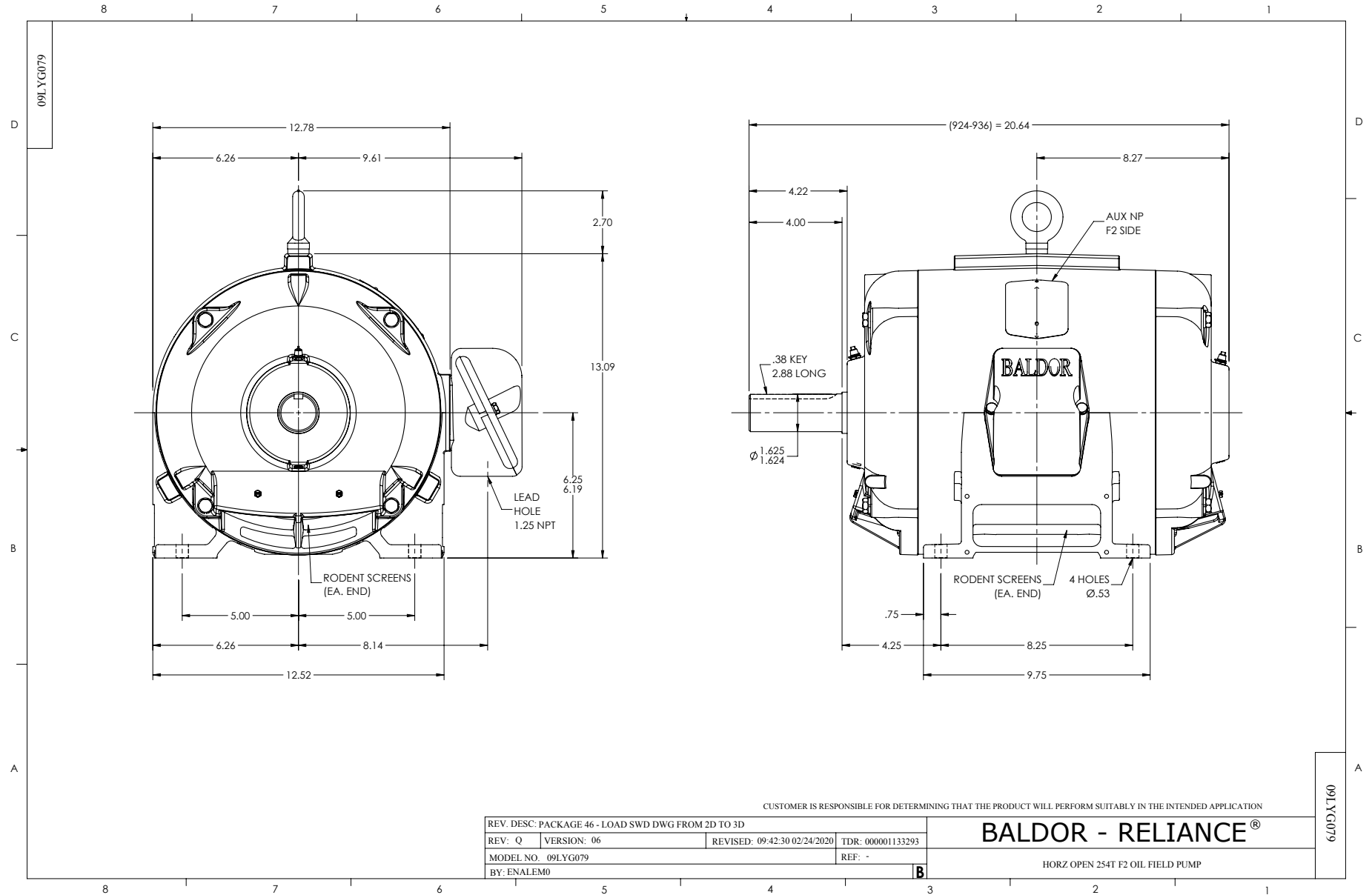
<b>Winding:</b> 09WGY173-R001		<b>Type:</b> 0932M		<b>Enclosure:</b> OPEN	
<b>Nameplate Data</b>			<b>460 V, 60 Hz: 2nd Voltage Connection</b>		
<b>Rated Output (HP)</b>	7.5		<b>Full Load Torque</b>	34.3 LB-FT	
<b>Volts</b>	230/460/796		<b>Start Configuration</b>	direct on line	
<b>Full Load Amps</b>	25/12.5/7.2		<b>Breakdown Torque</b>	107 LB-FT	
<b>R.P.M.</b>	1125		<b>Pull-up Torque</b>	78 LB-FT	
<b>Hz</b>	<b>60 Phase</b>	3	<b>Locked-rotor Torque</b>	91 LB-FT	
<b>NEMA Design Code</b>	<b>D KVA Code</b>	H	<b>Starting Current</b>	64.7 A	
<b>Service Factor (S.F.)</b>	1.15		<b>No-load Current</b>	8.44 A	
<b>NEMA Nom. Eff.</b>	<b>84 Power Factor</b>	67	<b>Line-line Res. @ 25°C</b>	1.15 Ω	
<b>Rating - Duty</b>	40C AMB-CONT		<b>Temp. Rise @ Rated Load</b>	61°C	
<b>S.F. Amps</b>			<b>Temp. Rise @ S.F. Load</b>	77°C	

**Load Characteristics 460 V, 60 Hz, 7.5 HP**

<b>% of Rated Load</b>	<b>25</b>	<b>50</b>	<b>75</b>	<b>100</b>	<b>125</b>	<b>150</b>	<b>S.F.</b>
<b>Power Factor</b>	24	43	57	64	70	73	68
<b>Efficiency</b>	73.6	83.5	85.3	84.9	83.3	81.1	83.9
<b>Speed</b>	1186	1170	1152	1135	1112	1087	1121
<b>Line amperes</b>	8.68	9.61	11	12.7	15.1	17.7	14.14

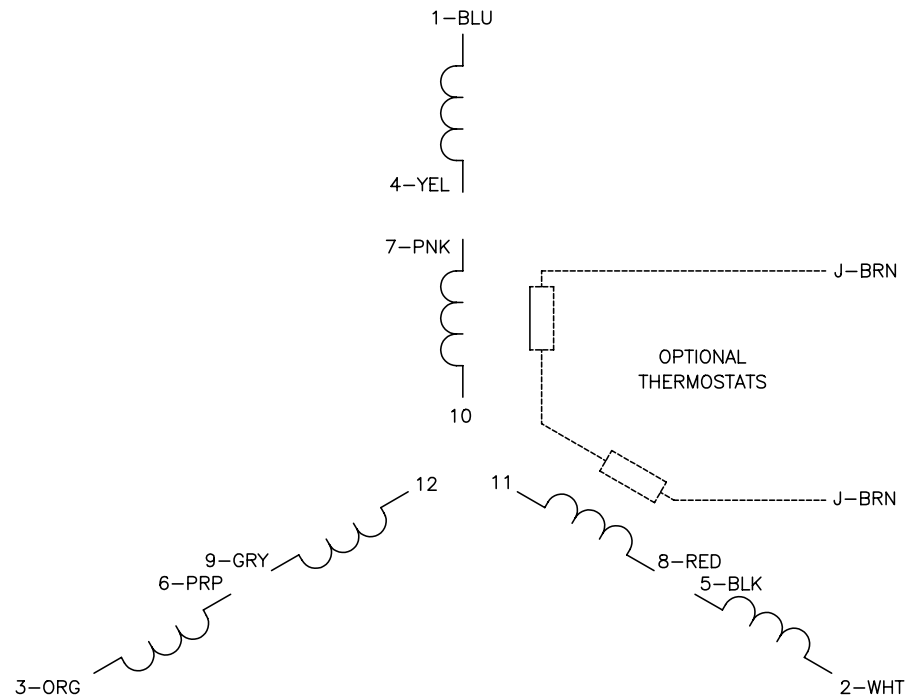
Performance Graph at 460V, 60Hz, 7.5HP Typical performance - Not guaranteed values



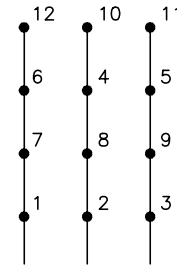




CD0321

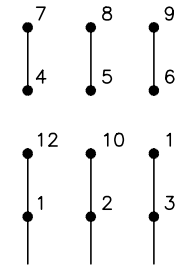


230V CONNECTION (2D)



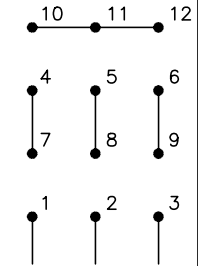
LINE

460V CONNECTION (1D)



LINE

796V CONNECTION (1Y)



LINE

NOTES:

1. INTERCHANGE ANY TWO LINE LEADS TO REVERSE ROTATION.
2. OPTIONAL THERMOSTATS ARE PROVIDED WHEN SPECIFIED.
3. ACTUAL NUMBER OF INTERNAL PARALLEL CIRCUITS MAY BE A MULTIPLE OF THOSE SHOWN ABOVE.
4. LEAD COLORS ARE OPTIONAL. LEADS MUST ALWAYS BE MARKED AS SHOWN.

REV. DESC: REVISE TO SHOW OPTIONAL COLORS			
REV. LTR: C	BY: JLP	REVISED: 01/21/99 3:17	TDR: 0171435
CD0321		FILE: AAA00008378	MDL: -
		MTL: -	

**BALDOR ELECTRIC Co.**

3PH, TV, 12 LEADS, 2D/1D/1Y, OIL FIELD PUMPERS

CD0321