

**BALDOR® • RELIANCE** 

**Product Information Packet**

**PCL3515M**

**2HP,3450RPM,1PH,60HZ,56C,3524LC,TEFC,F1**

Part Detail							
Revision:	AE	Status:	PRD/A	Change #:		Proprietary:	No
Type:	AC	Elec. Spec:	35WGY691	CD Diagram:	CD0320	Mfg Plant:	
Mech. Spec:	35T973	Layout:	35LYT973	Poles:	02	Created Date:	06-22-2007
Base:	RG	Eff. Date:	05-31-2018	Leads:	4#14 A&J,2#18 B PH,1#12 4-YEL		

Specs			
Catalog Number:	PCL3515M	Inverter Code:	Not Inverter
Enclosure:	TEFC	KVA Code:	F
Frame:	56C	Lifting Lugs:	No Lifting Lugs
Frame Material:	Steel	Locked Bearing Indicator:	Locked Bearing
Motor Letter Type:	Cap Start, Cap Run	Motor Lead Quantity/Wire Size:	4 @ 14 AWG, A&J
Output @ Frequency:	2.000 HP @ 60 HZ	Motor Lead Exit:	Ko Box
Synchronous Speed @ Frequency:	3600 RPM @ 60 HZ	Motor Lead Termination:	Flying Leads
Voltage @ Frequency:	115.0 V @ 60 HZ	Motor Type:	3524LC
	230.0 V @ 60 HZ	Mounting Arrangement:	F1
XP Class and Group:	None	Power Factor:	95
XP Division:	Not Applicable	Product Family:	General Purpose
Agency Approvals:	UR	Pulley End Bearing Type:	Ball
	CSA	Pulley Face Code:	C-Face
Auxillary Box:	No Auxillary Box	Pulley Shaft Indicator:	Standard
Auxillary Box Lead Termination:	None	Rodent Screen:	None
Base Indicator:	Rigid	RoHS Status:	ROHS COMPLIANT
Bearing Grease Type:	Polyrex EM (-20F +300F)	Shaft Extension Location:	Pulley End
Blower:	None	Shaft Ground Indicator:	No Shaft Grounding

<b>Current @ Voltage:</b>	17.600 A @ 115.0 V	<b>Shaft Rotation:</b>	Reversible
	8.800 A @ 230.0 V	<b>Shaft Slinger Indicator:</b>	No Slinger
<b>Design Code:</b>	L	<b>Speed Code:</b>	Single Speed
<b>Drip Cover:</b>	No Drip Cover	<b>Motor Standards:</b>	NEMA
<b>Duty Rating:</b>	CONT	<b>Starting Method:</b>	Direct on line
<b>Electrically Isolated Bearing:</b>	Not Electrically Isolated	<b>Thermal Device - Bearing:</b>	None
<b>Feedback Device:</b>	NO FEEDBACK	<b>Thermal Device - Winding:</b>	Do Not Use
<b>Front Face Code:</b>	Standard	<b>Vibration Sensor Indicator:</b>	No Vibration Sensor
<b>Front Shaft Indicator:</b>	None	<b>Winding Thermal 1:</b>	Manual Thermal Overload
<b>Heater Indicator:</b>	No Heater	<b>Winding Thermal 1 Location:</b>	KO
<b>Insulation Class:</b>	F	<b>Winding Thermal 2:</b>	None

<b>Nameplate NP1257L</b>	
<b>CAT.NO.</b>	PCL3515M
<b>SPEC.</b>	35T973Y691
<b>HP</b>	2
<b>VOLTS</b>	115/230
<b>AMP</b>	17.6/8.8
<b>RPM</b>	3450
<b>FRAME</b>	56C
<b>SER.F.</b>	1.15
<b>NEMA-NOM-EFF</b>	77
<b>RATING</b>	40C AMB-CONT
<b>CC</b>	USABLE AT 208V N/A
<b>DE</b>	6205
<b>ENCL</b>	TEFC

<b>CODE</b>	F	<b>DES</b>	L	<b>CL</b>	F	<b>PH</b>	1
<b>PF</b>	95	<b>ODE</b>	6203	<b>SN</b>		<b>HZ</b>	60

**AC Induction Motor Performance Data**

Record # 10291

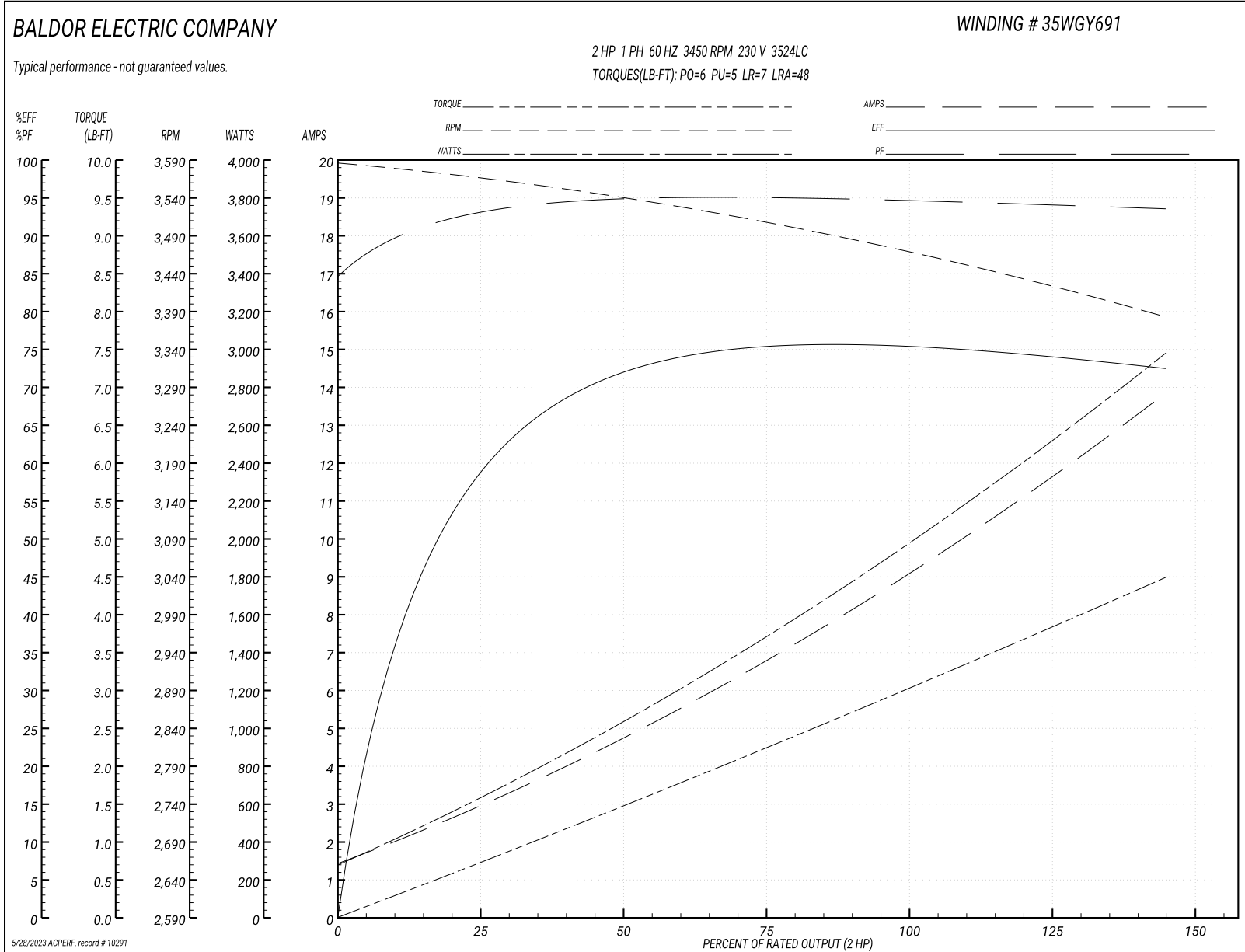
Typical performance - not guaranteed values

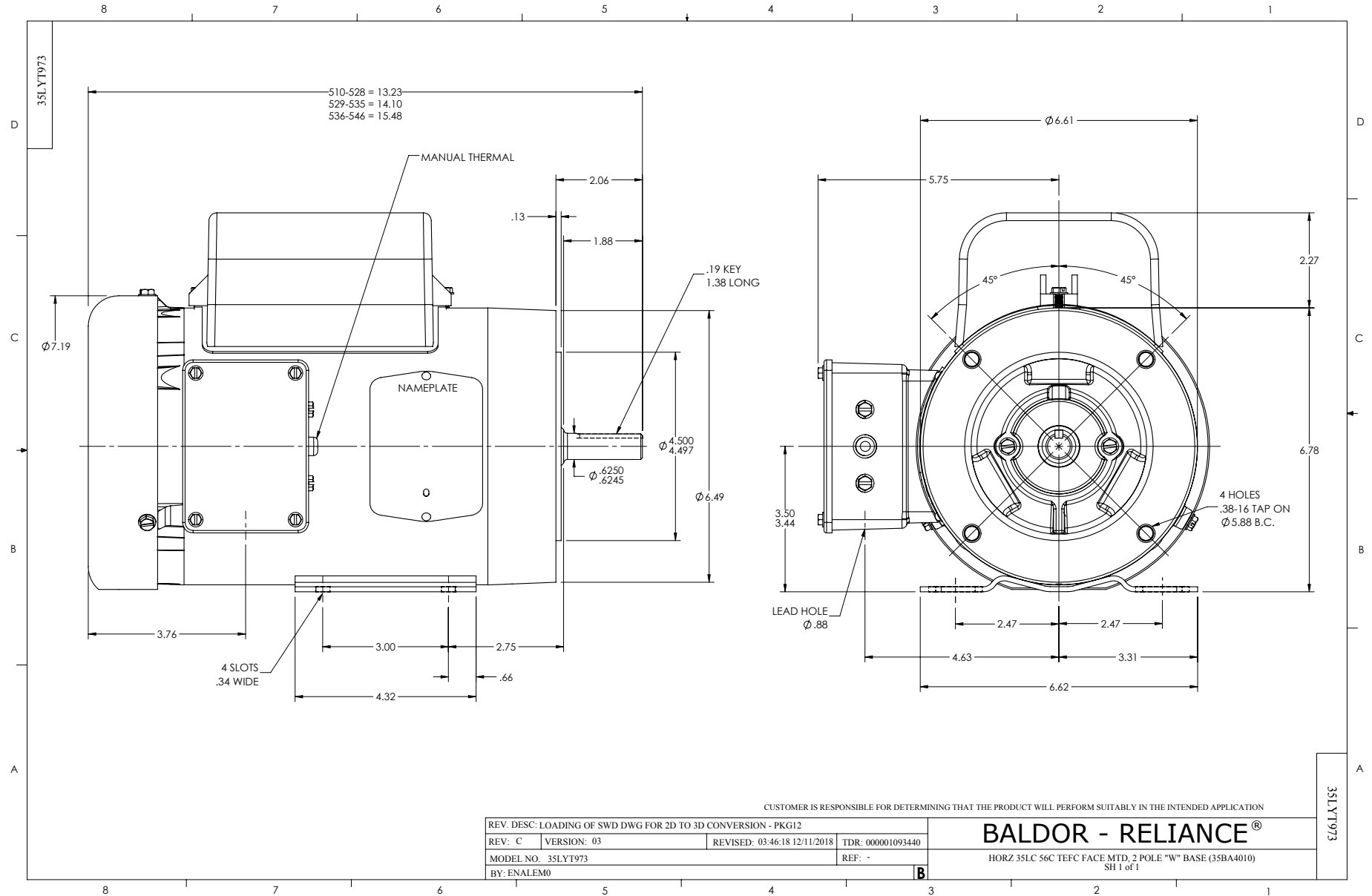
<b>Winding:</b> 35WGY691-R001		<b>Type:</b> 3524LC		<b>Enclosure:</b> TEFC	
<b>Nameplate Data</b>			<b>230 V, 60 Hz: High Voltage Connection</b>		
<b>Rated Output (HP)</b>	2		<b>Full Load Torque</b>	3 LB-FT	
<b>Volts</b>	115/230		<b>Start Configuration</b>	direct on line	
<b>Full Load Amps</b>	17.6/8.8		<b>Breakdown Torque</b>	6 LB-FT	
<b>R.P.M.</b>	3450		<b>Pull-up Torque</b>	5 LB-FT	
<b>Hz</b>	<b>60 Phase</b>	1	<b>Locked-rotor Torque</b>	7 LB-FT	
<b>NEMA Design Code</b>	<b>L KVA Code</b>	F	<b>Starting Current</b>	48 A	
<b>Service Factor (S.F.)</b>	1.15		<b>No-load Current</b>	1.35 A	
<b>NEMA Nom. Eff.</b>	<b>77 Power Factor</b>	95	<b>Line-line Res. @ 25°C</b>	1.33 Ω A Ph 1.27 Ω B Ph	
<b>Rating - Duty</b>	40C AMB-CONT		<b>Temp. Rise @ Rated Load</b>	66°C	
<b>S.F. Amps</b>			<b>Temp. Rise @ S.F. Load</b>	88°C	

**Load Characteristics 230 V, 60 Hz, 2 HP**

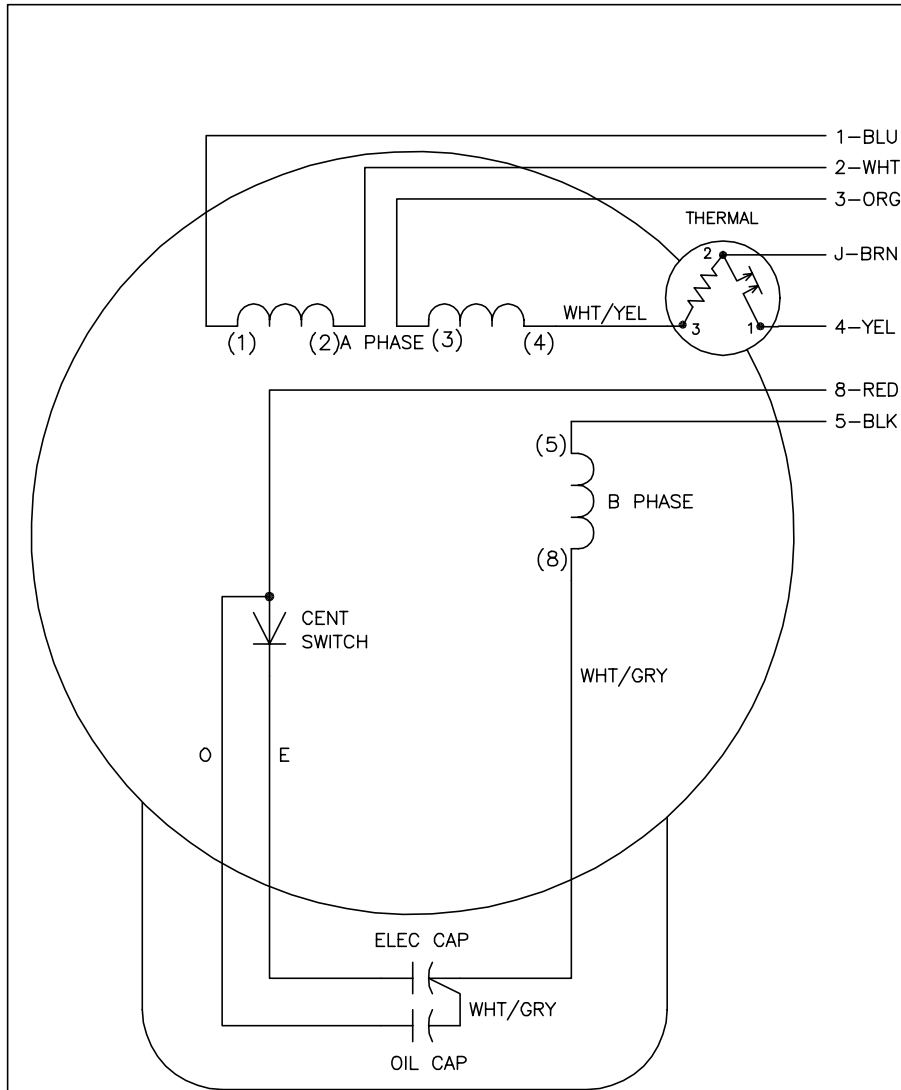
<b>% of Rated Load</b>	<b>25</b>	<b>50</b>	<b>75</b>	<b>100</b>	<b>125</b>	<b>150</b>	<b>S.F.</b>
<b>Power Factor</b>	93	93	96	95	95	93	95
<b>Efficiency</b>	57	72	76	77	72.5	73	74.3
<b>Speed</b>	3560	3539	3508	3473	3431	3380	3448
<b>Line amperes</b>	3.1	4.9	6.7	8.8	11.6	13.8	10.5

Performance Graph at 230V, 60Hz, 2.0HP Typical performance - Not guaranteed values





CD0320



	LINE A	LINE B	JOIN	JOIN
HIGH STD	1,8	4	2,3,5	J
HIGH OPP	1,5	4	2,3,8	J
LOW STD	1,3,8	4	-	2,J,5
LOW OPP	1,3,5	4	-	2,J,8

NOTES:

1. STANDARD ROTATION IS CCW FACING END OPPOSITE SHAFT EXTENSION.
2. MULTIPLE CAPACITORS ARE CONNECTED IN PARALLEL UNLESS OTHERWISE SPECIFIED.
3. LEAD COLORS ARE OPTIONAL. LEADS MUST ALWAYS BE NUMBERED AS SHOWN.

CD0320

REV. DESC: ADD INTERNAL CONNECTION TO HELP MANUFACTURING		
REV. LTR: G	VERSION: 01	TDR: 000000941594
FILE: \AAA\00007\422	REVISED: 02:21:00 08/28/2015	BY: ENALEMO
MTL: -	© □	

**BALDOR**

TYPE LC, DV, REV, THERMAL, B PH AMPS THRU HTR HVC, 7 LEAD

SH 1 of 1