

BALDOR® • RELIANCE 

Product Information Packet

VEBM3546

1HP,1770RPM,3PH,60HZ,56C,3520M,TEFC,F1,B

Part Detail							
Revision:	F	Status:	PRD/A	Change #:		Proprietary:	No
Type:	AC	Elec. Spec:	35WGG004	CD Diagram:	CD0005	Mfg Plant:	
Mech. Spec:	35E058	Layout:	35LYE058	Poles:	04	Created Date:	01-10-2022
Base:	N	Eff. Date:	06-07-2024	Leads:	9#18		Y

Specs			
Catalog Number:	VEBM3546	Heater Indicator:	No Heater
Enclosure:	TEFC	Insulation Class:	F
Frame:	56C	Inverter Code:	Inverter Ready
Frame Material:	Steel	KVA Code:	N
Motor Letter Type:	Three Phase	Lifting Lugs:	No Lifting Lugs
Output @ Frequency:	1.000 HP @ 60 HZ	Locked Bearing Indicator:	Locked Bearing
Synchronous Speed @ Frequency:	1800 RPM @ 60 HZ	Motor Lead Quantity/Wire Size:	9 @ 18 AWG
Voltage @ Frequency:	460.0 V @ 60 HZ	Motor Lead Exit:	Ko Box
	230.0 V @ 60 HZ	Motor Lead Termination:	Flying Leads
Haz Area Class and Group:	None	Motor Type:	3520M
Haz Area Division:	Not Applicable	Mounting Arrangement:	F1
Agency Approvals:	NEMA_PREMIUM	Power Factor:	69
	UR	Product Family:	General Purpose
	NEMA PREMIUM	Product Type:	BRAKE MOTOR
	CSA EEV	Pulley End Bearing Type:	Ball
Auxillary Box:	No Auxillary Box	Pulley Face Code:	C-Face
Auxillary Box Lead Termination:	None	Pulley Shaft Indicator:	Standard
Base Indicator:	No Mounting	Rodent Screen:	None

Bearing Grease Type:	Polyrex EM (-20F +300F)	RoHS Status:	ROHS COMPLIANT
Blower:	None	Shaft Extension Location:	Pulley End
Current @ Voltage:	3.200 A @ 208.0 V	Shaft Ground Indicator:	No Shaft Grounding
	3.200 A @ 230.0 V	Shaft Rotation:	Reversible
	1.600 A @ 460.0 V	Shaft Slinger Indicator:	No Slinger
Design Code:	B	Speed Code:	Single Speed
Drip Cover:	No Drip Cover	Motor Standards:	NEMA
Duty Rating:	CONT	Starting Method:	Direct on line
Electrically Isolated Bearing:	Not Electrically Isolated	Thermal Device - Bearing:	None
Feedback Device:	NO FEEDBACK	Thermal Device - Winding:	None
Front Face Code:	Brake Mounting	Vibration Sensor Indicator:	No Vibration Sensor
Front Shaft Indicator:	None	Winding Thermal 1:	None
		Winding Thermal 2:	None

Nameplate NP1259L										
CAT.NO.	VEBM3546									
SPEC.	35E058G004G1									
HP	1									
VOLTS	230/460									
AMP	3.2/1.6									
RPM	1770									
FRAME	56C				HZ	60			PH	3
SER.F.	1.15		CODE	N	DES	B		CL	F	
NEMA-NOM-EFF	85.5		PF	69						
RATING	40C AMB-CONT									
CC	010A									
DE	6205				ODE	6203				
ENCL	TEFC		SN							
	SFA 3.4/1.7									

AC Induction Motor Performance Data

Record # 91625

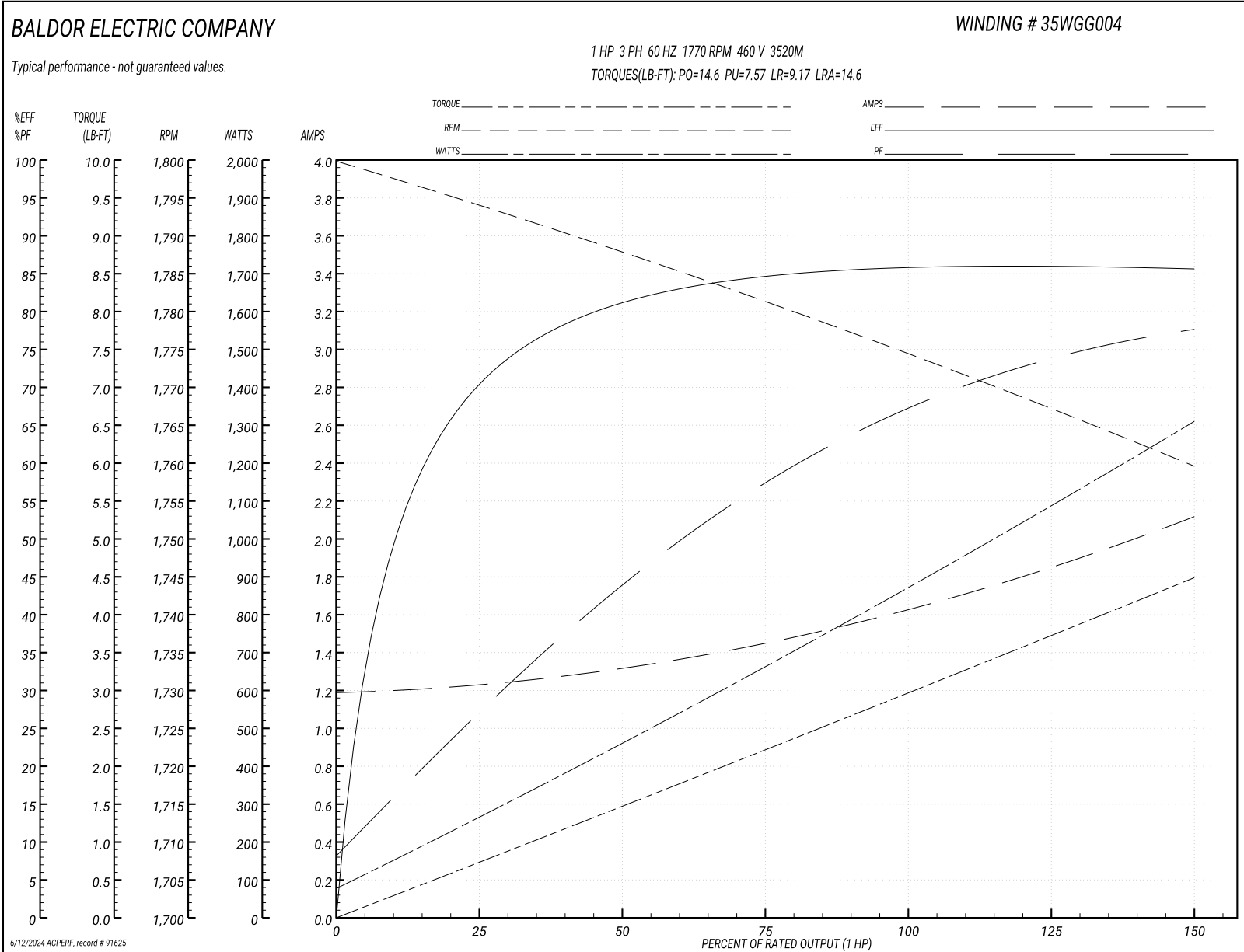
Typical performance - not guaranteed values

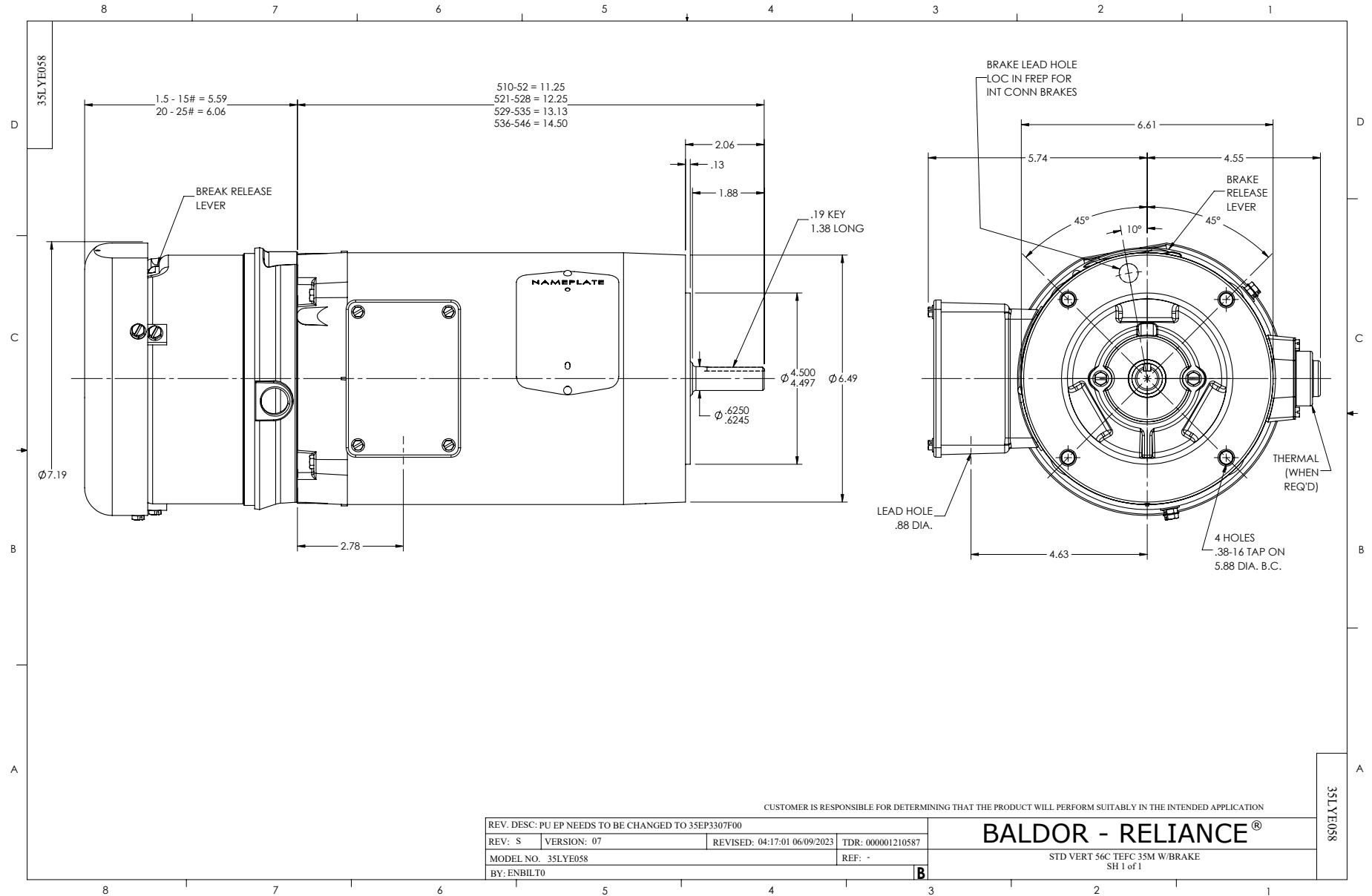
Winding: 35WGG004-R001		Type: 3520M		Enclosure: TEFC	
Nameplate Data			460 V, 60 Hz: High Voltage Connection		
Rated Output (HP)	1	Full Load Torque	2.982 LB-FT		
Volts	230/460	Start Configuration	direct on line		
Full Load Amps	3.2/1.6	Breakdown Torque	14.6 LB-FT		
R.P.M.	1770	Pull-up Torque	7.57 LB-FT		
Hz	60 Phase	3	Locked-rotor Torque	9.17 LB-FT	
NEMA Design Code	B KVA Code	N	Starting Current	14.6 A	
Service Factor (S.F.)	1.15	No-load Current	1.2 A		
NEMA Nom. Eff.	85.5	Power Factor	69	Line-line Res. @ 25°C	16.049 Ω
Rating - Duty	40C	AMB-CONT	Temp. Rise @ Rated Load 36°C		
S.F. Amps	3.4/1.7	Temp. Rise @ S.F. Load	41°C		
			Locked-rotor Power Factor	61.549	
			Rotor inertia	0.144 lb-ft ²	

Load Characteristics 460 V, 60 Hz, 1 HP

% of Rated Load	25	50	75	100	125	150	S.F.
Power Factor	29	45	58	67	73	78	71
Efficiency	71.1	81.2	84.7	85.8	86	85.6	85.9
Speed	1794	1787.3	1781.1	1774.3	1767.4	1759.4	1770
Line amperes	1.22	1.31	1.46	1.64	1.86	2.11	1.77

Performance Graph at 460V, 60Hz, 1.0HP Typical performance - Not guaranteed values

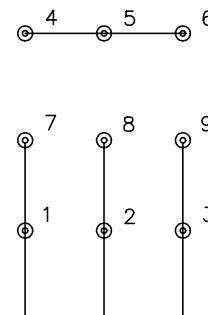




CD0005

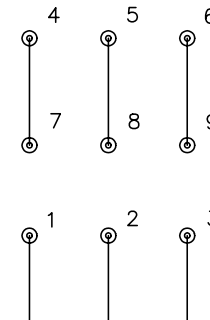


LOW VOLTAGE
(2Y)



LINE

HIGH VOLTAGE
(1Y)



LINE

NOTES:

1. INTERCHANGE ANY TWO LINE LEADS TO REVERSE ROTATION.
2. OPTIONAL THERMOSTATS ARE PROVIDED WHEN SPECIFIED.
3. ACTUAL NUMBER OF INTERNAL PARALLEL CIRCUITS MAY BE A MULTIPLE OF THOSE SHOWN ABOVE.
4. LEAD COLORS ARE OPTIONAL. LEADS MUST ALWAYS BE NUMBERED AS SHOWN.

REV. DESC: REVISE TO SHOW OPTIONAL COLORS

REV. LTR: E BY: JLP

REVISED: 01/19/99 10:15

TDR: 0171435

90000

FILE: AAA00005140

MDL: -

MTL: -

BALDOR ELECTRIC Co.

3PH, DV, 9 LEADS

CD0005