

BALDOR® • RELIANCE 

Product Information Packet

VEM3546

1HP,1770RPM,3PH,60HZ,56C,3520M,TEFC,F1,N

Part Detail							
Revision:	F	Status:	PRD/A	Change #:		Proprietary:	No
Type:	AC	Elec. Spec:	35WGG004	CD Diagram:	CD0005	Mfg Plant:	
Mech. Spec:	35J302	Layout:	35LYJ302	Poles:	04	Created Date:	07-16-2021
Base:	N	Eff. Date:	05-03-2024	Leads:	9#18		Y

Specs			
Catalog Number:	VEM3546	Heater Indicator:	No Heater
Enclosure:	TEFC	Insulation Class:	F
Frame:	56C	Inverter Code:	Inverter Ready
Frame Material:	Steel	KVA Code:	N
Motor Letter Type:	Three Phase	Lifting Lugs:	No Lifting Lugs
Output @ Frequency:	1.000 HP @ 60 HZ	Locked Bearing Indicator:	Locked Bearing
Synchronous Speed @ Frequency:	1800 RPM @ 60 HZ	Motor Lead Quantity/Wire Size:	9 @ 18 AWG
Voltage @ Frequency:	460.0 V @ 60 HZ	Motor Lead Exit:	Ko Box
	230.0 V @ 60 HZ	Motor Lead Termination:	Flying Leads
XP Class and Group:	None	Motor Type:	3520M
XP Division:	Not Applicable	Mounting Arrangement:	F1
Agency Approvals:	NEMA_PREMIUM	Power Factor:	69
	UR	Product Family:	General Purpose
	NEMA PREMIUM	Pulley End Bearing Type:	Ball
	CSA EEV	Pulley Face Code:	C-Face
Auxillary Box:	No Auxillary Box	Pulley Shaft Indicator:	Standard
Auxillary Box Lead Termination:	None	Rodent Screen:	None
Base Indicator:	No Mounting	RoHS Status:	ROHS COMPLIANT

Bearing Grease Type:	Polyrex EM (-20F +300F)	Shaft Extension Location:	Pulley End
Blower:	None	Shaft Ground Indicator:	No Shaft Grounding
Current @ Voltage:	3.200 A @ 208.0 V	Shaft Rotation:	Reversible
	3.200 A @ 230.0 V	Shaft Slinger Indicator:	No Slinger
	1.600 A @ 460.0 V	Speed Code:	Single Speed
Design Code:	B	Motor Standards:	NEMA
Drip Cover:	No Drip Cover	Starting Method:	Direct on line
Duty Rating:	CONT	Thermal Device - Bearing:	None
Electrically Isolated Bearing:	Not Electrically Isolated	Thermal Device - Winding:	None
Feedback Device:	NO FEEDBACK	Vibration Sensor Indicator:	No Vibration Sensor
Front Face Code:	Standard	Winding Thermal 1:	None
Front Shaft Indicator:	None	Winding Thermal 2:	None

Nameplate NP3441LUA									
CAT.NO.	VEM3546								
SPEC	35J302G004G1								
HP	1								
VOLTS	230/460								
AMPS	3.2/1.6								
RPM	1770								
FRAME	56C		HZ	60		PH	3		
SF	1.15		CODE	N		DES	B		CLASS
NEMA NOM. EFF	85.5		PF	69					F
RATING	40C AMB-CONT								
CC	010A								
ENCL	TEFC		SER						
DE	6205		ODE	6203					
VPWM INVERTER READY	SFA 3.4/1.7								
CT6-60H(10:1)VT3-60H(20:1)									
	50HZ 1HP 190/380V 3.6/1.8A								
	SF1.0								

AC Induction Motor Performance Data

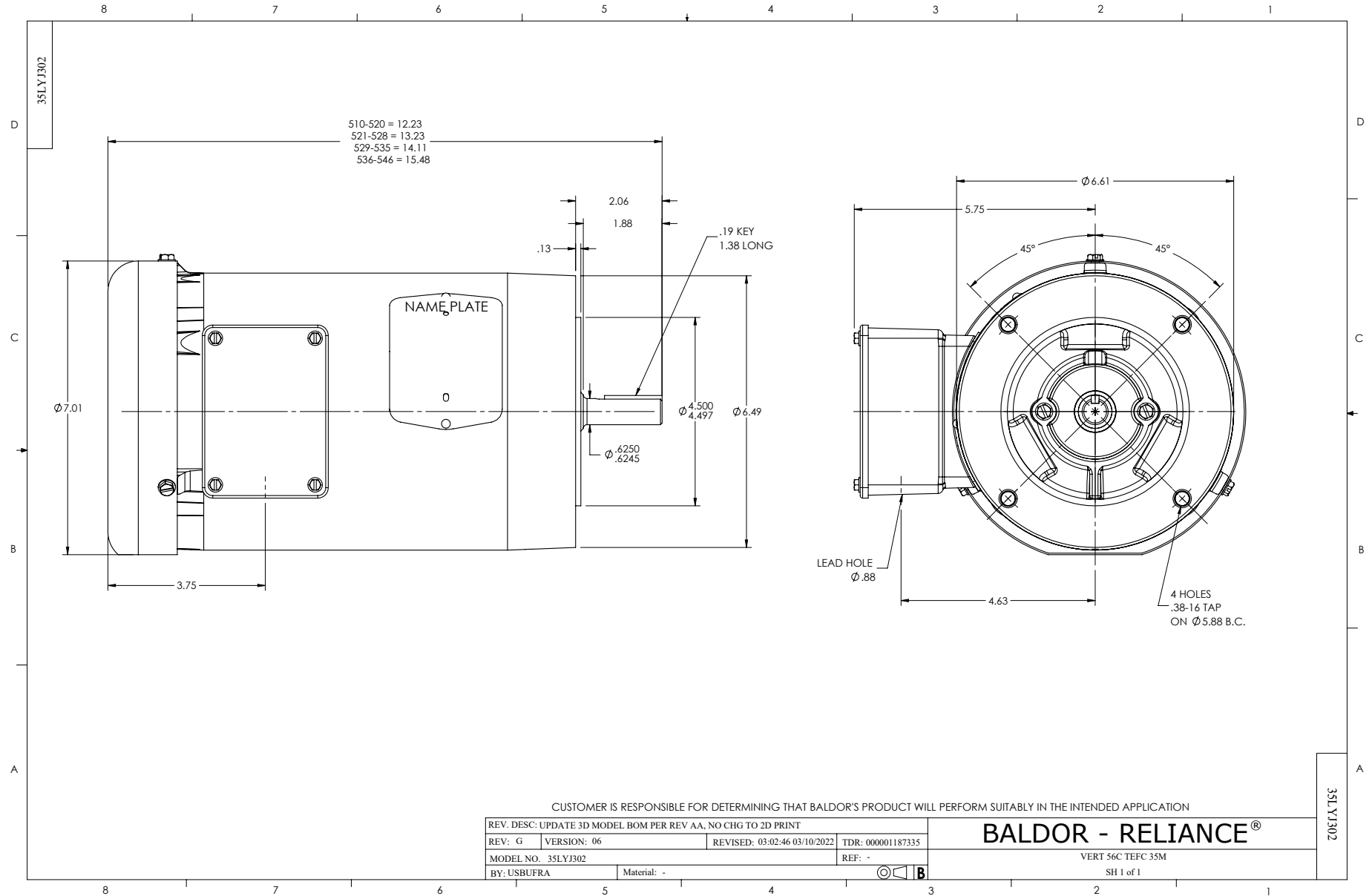
Record # 91625

Typical performance - not guaranteed values

Winding: 35WGG004-R001		Type: 3520M		Enclosure: TEFC	
Nameplate Data			460 V, 60 Hz: High Voltage Connection		
Rated Output (HP)	1	Full Load Torque	2.982 LB-FT		
Volts	230/460	Start Configuration	direct on line		
Full Load Amps	3.2/1.6	Breakdown Torque	14.6 LB-FT		
R.P.M.	1770	Pull-up Torque	7.57 LB-FT		
Hz	60 Phase	3	Locked-rotor Torque	9.17 LB-FT	
NEMA Design Code	B KVA Code	N	Starting Current	14.6 A	
Service Factor (S.F.)	1.15	No-load Current	1.2 A		
NEMA Nom. Eff.	85.5	Power Factor	69	Line-line Res. @ 25°C	16.049 Ω
Rating - Duty	40C	AMB-CONT	Temp. Rise @ Rated Load 36°C		
S.F. Amps	3.4/1.7	Temp. Rise @ S.F. Load	41°C		
			Locked-rotor Power Factor	61.549	
			Rotor inertia	0.144 lb-ft ²	

Load Characteristics 460 V, 60 Hz, 1 HP

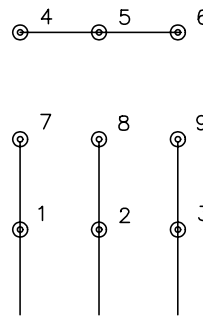
% of Rated Load	25	50	75	100	125	150	S.F.
Power Factor	29	45	58	67	73	78	71
Efficiency	71.1	81.2	84.7	85.8	86	85.6	85.9
Speed	1794	1787.3	1781.1	1774.3	1767.4	1759.4	1770
Line amperes	1.22	1.31	1.46	1.64	1.86	2.11	1.77



CD0005

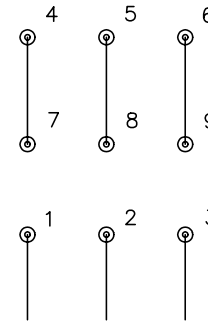


LOW VOLTAGE
(2Y)



LINE

HIGH VOLTAGE
(1Y)



LINE

NOTES:

1. INTERCHANGE ANY TWO LINE LEADS TO REVERSE ROTATION.
2. OPTIONAL THERMOSTATS ARE PROVIDED WHEN SPECIFIED.
3. ACTUAL NUMBER OF INTERNAL PARALLEL CIRCUITS MAY BE A MULTIPLE OF THOSE SHOWN ABOVE.
4. LEAD COLORS ARE OPTIONAL. LEADS MUST ALWAYS BE NUMBERED AS SHOWN.

REV. DESC: REVISE TO SHOW OPTIONAL COLORS			
REV. LTR: E	BY: JLP	REVISED: 01/19/99 10:15	TDR: 0171435
900000		FILE: AAA00005140	MDL: -
		MTL: -	

BALDOR ELECTRIC Co.

3PH, DV, 9 LEADS

CD0005