

BALDOR® • RELIANCE 

Product Information Packet

VEWDM3538

.5HP,1770RPM,3PH,60HZ,56C,3512M,TENV,F1

Part Detail							
Revision:	C	Status:	PRD/A	Change #:		Proprietary:	No
Type:	AC	Elec. Spec:	35WGG155	CD Diagram:	CD0005	Mfg Plant:	
Mech. Spec:	35S603	Layout:	35LYS603	Poles:	04	Created Date:	01-10-2022
Base:	N	Eff. Date:	04-12-2023	Leads:	9#18		

Specs			
Catalog Number:	VEWDM3538	Heater Indicator:	No Heater
Enclosure:	TENV	Insulation Class:	F
Frame:	56C	Inverter Code:	Not Inverter
Frame Material:	Steel	KVA Code:	M
Motor Letter Type:	Three Phase	Lifting Lugs:	No Lifting Lugs
Output @ Frequency:	.500 HP @ 60 HZ	Locked Bearing Indicator:	Locked Bearing
Synchronous Speed @ Frequency:	1800 RPM @ 60 HZ	Motor Lead Quantity/Wire Size:	9 @ 18 AWG
Voltage @ Frequency:	460.0 V @ 60 HZ	Motor Lead Exit:	Ko Box
	230.0 V @ 60 HZ	Motor Lead Termination:	Flying Leads
XP Class and Group:	None	Motor Type:	3512M
XP Division:	Not Applicable	Mounting Arrangement:	F1
Agency Approvals:	CSA	Power Factor:	62
	UR	Product Family:	Wash Down
Auxillary Box:	No Auxillary Box	Pulley End Bearing Type:	Sealed Bearing
Auxillary Box Lead Termination:	None	Pulley Face Code:	C-Face
Base Indicator:	No Mounting	Pulley Shaft Indicator:	Standard
Bearing Grease Type:	Polyrex EM (-20F +300F)	Rodent Screen:	None
Blower:	None	Shaft Extension Location:	Pulley End

Current @ Voltage:	1.800 A @ 230.0 V	Shaft Ground Indicator:	No Shaft Grounding
	1.900 A @ 208.0 V	Shaft Rotation:	Reversible
	.900 A @ 460.0 V	Shaft Slinger Indicator:	Shaft Slinger
Design Code:	B	Speed Code:	Single Speed
Drip Cover:	No Drip Cover	Motor Standards:	NEMA
Duty Rating:	CONT	Starting Method:	Direct on line
Electrically Isolated Bearing:	Not Electrically Isolated	Thermal Device - Bearing:	None
Feedback Device:	NO FEEDBACK	Thermal Device - Winding:	None
Front Face Code:	Standard	Vibration Sensor Indicator:	No Vibration Sensor
Front Shaft Indicator:	None	Winding Thermal 1:	None
		Winding Thermal 2:	None

Nameplate NP2179L										
CAT.NO.	VEWDM3538									
SPEC.	35S603G155G1									
HP	.5									
VOLTS	230/460									
AMP	1.8/.9									
RPM	1770									
FRAME	56C				HZ	60			PH	3
SER.F.	1.15		CODE	M	DES	B		CLASS	F	
NEMA-NOM-EFF	78.2		PF	62						
RATING	40C AMB-CONT									
CC								USABLE AT 208V	N/A	
DE	6205			ODE	6203					
ENCL	TENV		SN							
BLANK	SFA 1.9/0.95									

AC Induction Motor Performance Data

Record # 82215

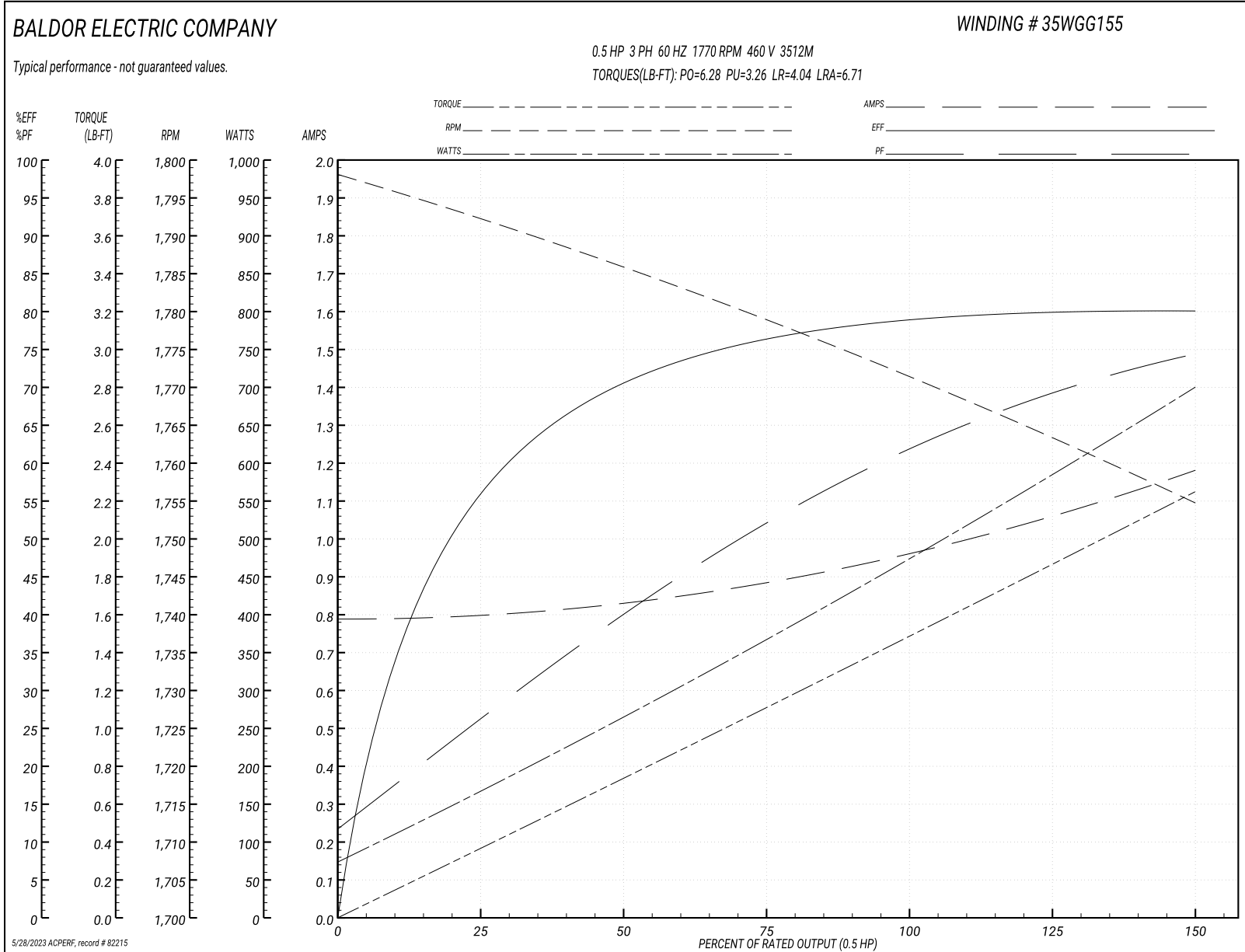
Typical performance - not guaranteed values

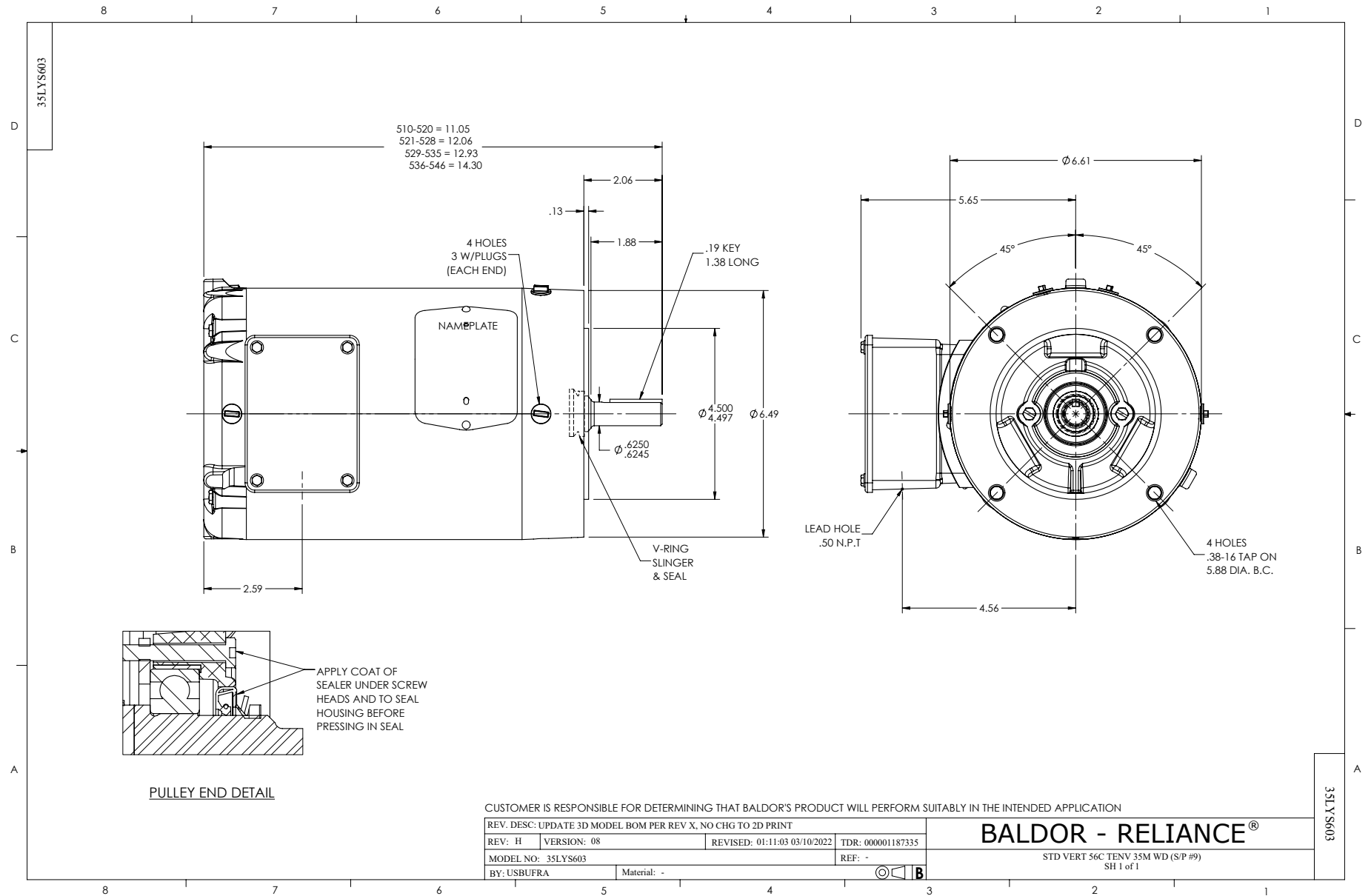
Winding: 35WGG155-R009			Type: 3512M	Enclosure: TENV	
Nameplate Data			460 V, 60 Hz: High Voltage Connection		
Rated Output (HP)	.5		Full Load Torque	1.49 LB-FT	
Volts	230/460		Start Configuration	direct on line	
Full Load Amps	1.8/.9		Breakdown Torque	6.28 LB-FT	
R.P.M.	1770		Pull-up Torque	3.26 LB-FT	
Hz	60 Phase	3	Locked-rotor Torque	4.04 LB-FT	
NEMA Design Code	B KVA Code	M	Starting Current	6.71 A	
Service Factor (S.F.)	1.15		No-load Current	0.792 A	
NEMA Nom. Eff.	80 Power Factor	65	Line-line Res. @ 25°C	43.2 Ω	
Rating - Duty	40C AMB-CONT		Temp. Rise @ Rated Load	58°C	
S.F. Amps	1.9/0.95		Temp. Rise @ S.F. Load	64°C	
			Locked-rotor Power Factor	70.8	
			Rotor inertia	0.0866 lb-ft ²	

Load Characteristics 460 V, 60 Hz, 0.5 HP

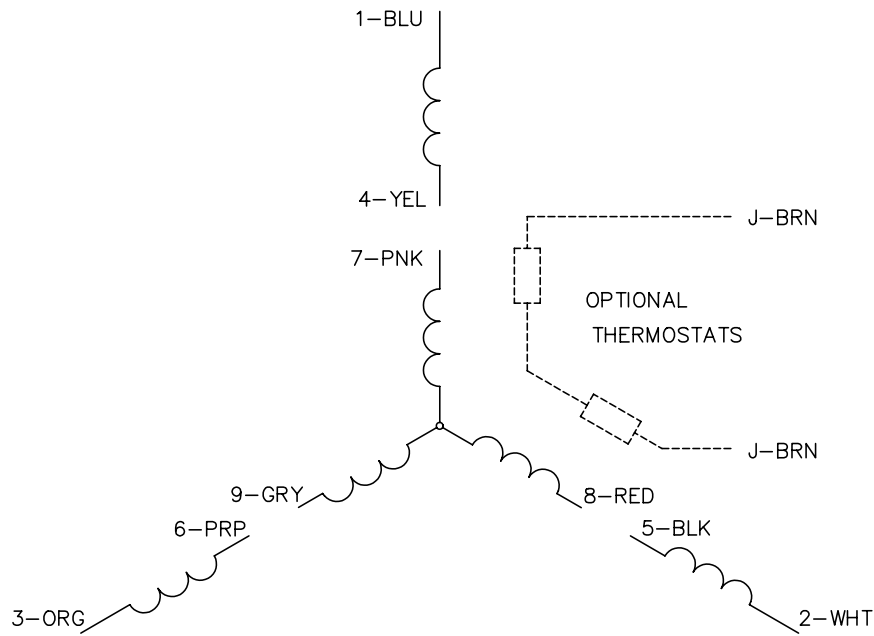
% of Rated Load	25	50	75	100	125	150	S.F.
Power Factor	27	41	52	62	69	75	66
Efficiency	56.5	70.7	76.5	78.9	80	80	79.6
Speed	1792	1786	1779	1771	1763	1755	1766
Line amperes	0.795	0.827	0.889	0.966	1.06	1.18	1.02

Performance Graph at 460V, 60Hz, 0.5HP Typical performance - Not guaranteed values

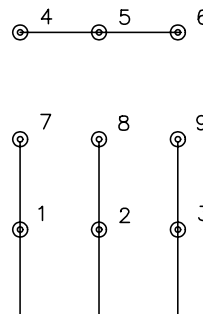




CD0005

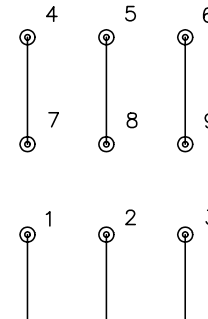


LOW VOLTAGE
(2Y)



LINE

HIGH VOLTAGE
(1Y)



LINE

NOTES:

1. INTERCHANGE ANY TWO LINE LEADS TO REVERSE ROTATION.
2. OPTIONAL THERMOSTATS ARE PROVIDED WHEN SPECIFIED.
3. ACTUAL NUMBER OF INTERNAL PARALLEL CIRCUITS MAY BE A MULTIPLE OF THOSE SHOWN ABOVE.
4. LEAD COLORS ARE OPTIONAL. LEADS MUST ALWAYS BE NUMBERED AS SHOWN.

REV. DESC: REVISE TO SHOW OPTIONAL COLORS			
REV. LTR: E	BY: JLP	REVISED: 01/19/99 10:15	TDR: 0171435
90000		FILE: AAA00005140	MDL: -
		MTL: -	

BALDOR ELECTRIC Co.

3PH, DV, 9 LEADS

CD0005