

**BALDOR® • RELIANCE** 

**Product Information Packet**

**VEWDM3546**

**1HP,1770RPM,3PH,60HZ,56C,3522M,TENV,F1,N**

Part Detail							
Revision:	B	Status:	PRD/A	Change #:		Proprietary:	No
Type:	AC	Elec. Spec:	35WGZ818	CD Diagram:	CD0005	Mfg Plant:	
Mech. Spec:	35S603	Layout:	35LYS603	Poles:	04	Created Date:	11-12-2021
Base:	N	Eff. Date:	02-14-2024	Leads:	9#18		

Specs			
Catalog Number:	VEWDM3546	Front Shaft Indicator:	None
Enclosure:	TENV	Heater Indicator:	No Heater
Frame:	56C	Insulation Class:	F
Frame Material:	Steel	Inverter Code:	Inverter Ready
Motor Letter Type:	Three Phase	KVA Code:	M
Output @ Frequency:	1.000 HP @ 60 HZ	Lifting Lugs:	No Lifting Lugs
Synchronous Speed @ Frequency:	1800 RPM @ 60 HZ	Locked Bearing Indicator:	Locked Bearing
Voltage @ Frequency:	460.0 V @ 60 HZ	Motor Lead Quantity/Wire Size:	9 @ 18 AWG
	230.0 V @ 60 HZ	Motor Lead Exit:	Ko Box
Haz Area Class and Group:	None	Motor Lead Termination:	Flying Leads
Haz Area Division:	Not Applicable	Motor Type:	3522M
Agency Approvals:	NEMA_PREMIUM	Mounting Arrangement:	F1
	UR	Power Factor:	66
	NEMA PREMIUM	Product Family:	Wash Down
	CSA EEV	Pulley End Bearing Type:	Sealed Bearing
Auxillary Box:	No Auxillary Box	Pulley Face Code:	C-Face
Auxillary Box Lead Termination:	None	Pulley Shaft Indicator:	Standard
Base Indicator:	No Mounting	Rodent Screen:	None

<b>Bearing Grease Type:</b>	Polyrex EM (-20F +300F)	<b>Shaft Extension Location:</b>	Pulley End
<b>Blower:</b>	None	<b>Shaft Ground Indicator:</b>	No Shaft Grounding
<b>Current @ Voltage:</b>	3.300 A @ 208.0 V	<b>Shaft Rotation:</b>	Reversible
	3.340 A @ 230.0 V	<b>Shaft Slinger Indicator:</b>	Shaft Slinger
	1.670 A @ 460.0 V	<b>Speed Code:</b>	Single Speed
<b>Design Code:</b>	B	<b>Motor Standards:</b>	NEMA
<b>Drip Cover:</b>	No Drip Cover	<b>Starting Method:</b>	Direct on line
<b>Duty Rating:</b>	CONT	<b>Thermal Device - Bearing:</b>	None
<b>Electrically Isolated Bearing:</b>	Not Electrically Isolated	<b>Thermal Device - Winding:</b>	None
<b>Feedback Device:</b>	NO FEEDBACK	<b>Vibration Sensor Indicator:</b>	No Vibration Sensor
<b>Front Face Code:</b>	Standard	<b>Winding Thermal 1:</b>	None
		<b>Winding Thermal 2:</b>	None

Nameplate NP1669L										
CAT.NO.	VEWDM3546									
SPEC.	35S603Z818G1									
HP	1									
VOLTS	230/460									
AMP	3.34/1.67									
RPM	1770									
FRAME	56C				HZ	60			PH	3
SER.F.	1.15		CODE	M	DES	B		CLASS	F	
NEMA-NOM-EFF	85.5		PF	66						
RATING	40C AMB-CONT									
CC	010A									
DE	6205			ODE	6203					
ENCL	TENV		SN							
BLANK	SFA 3.5/1.75									

**AC Induction Motor Performance Data**

Record # 89784

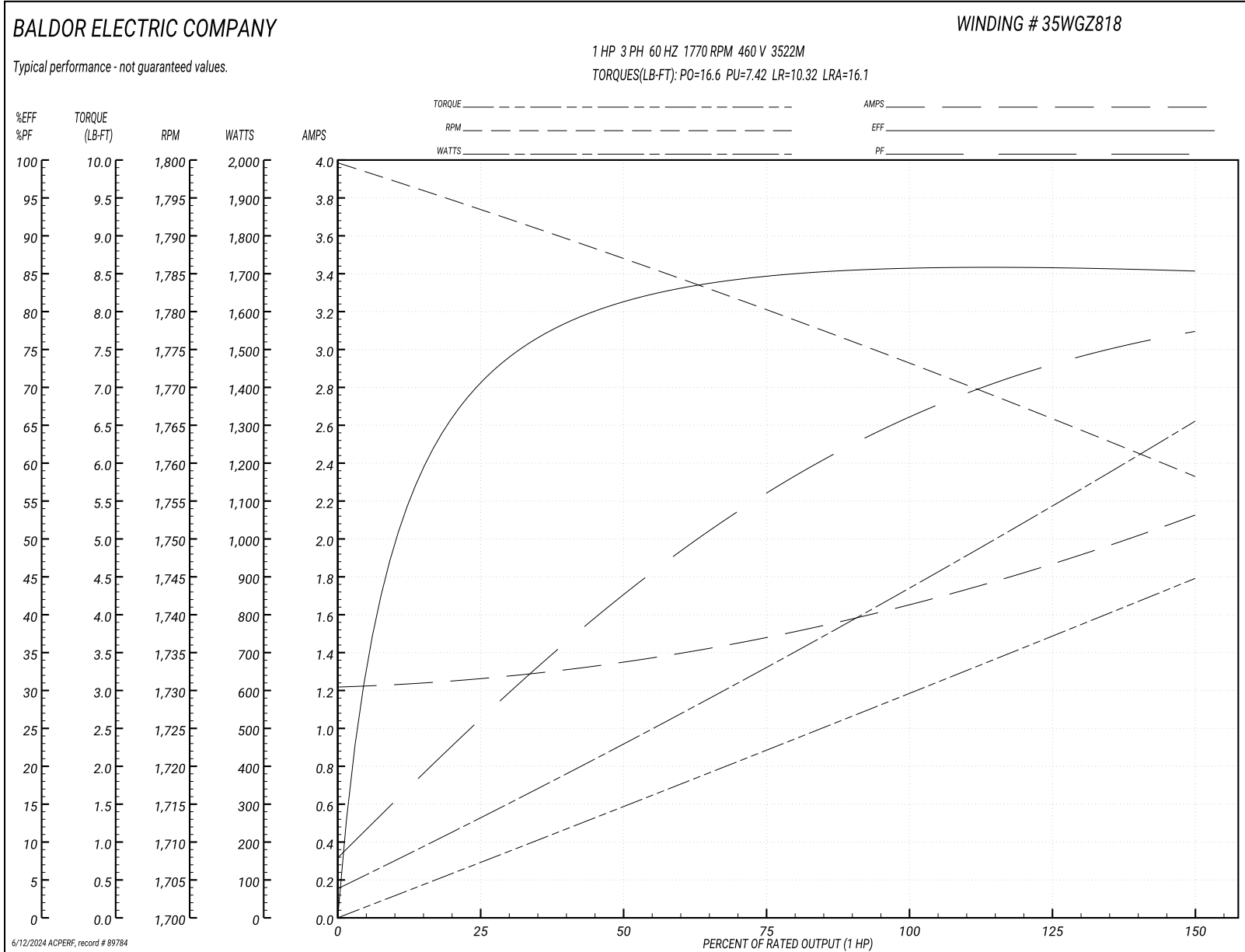
Typical performance - not guaranteed values

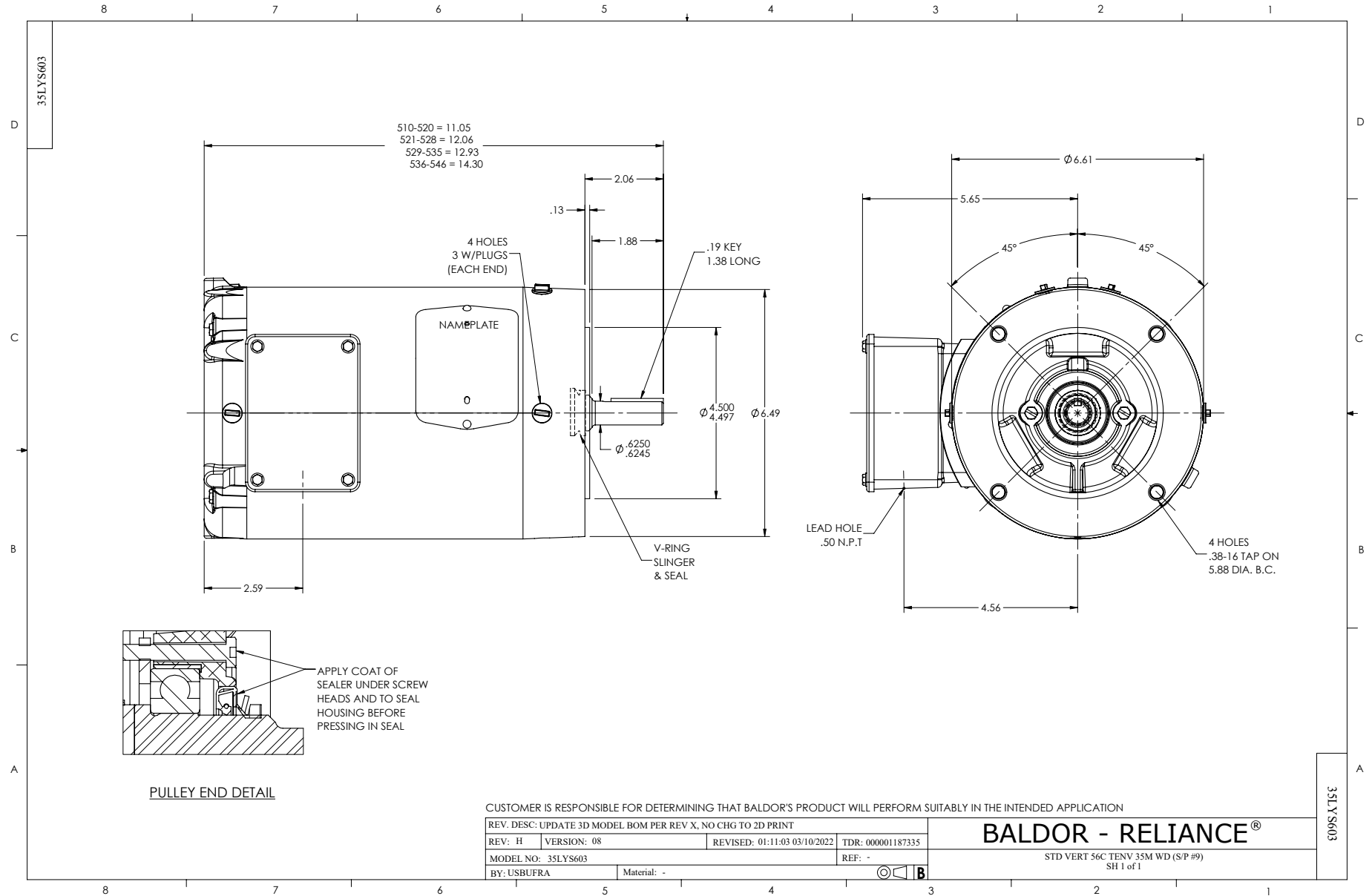
<b>Winding: 35WGZ818-R002</b>		<b>Type: 3522M</b>		<b>Enclosure: TENV</b>	
<b>Nameplate Data</b>			<b>460 V, 60 Hz: High Voltage Connection</b>		
<b>Rated Output (HP)</b>	1	<b>Full Load Torque</b>	2.99 LB-FT		
<b>Volts</b>	230/460	<b>Start Configuration</b>	direct on line		
<b>Full Load Amps</b>	3.34/1.67	<b>Breakdown Torque</b>	16.6 LB-FT		
<b>R.P.M.</b>	1770	<b>Pull-up Torque</b>	7.42 LB-FT		
<b>Hz</b>	60 <b>Phase</b>	3	<b>Locked-rotor Torque</b>	10.32 LB-FT	
<b>NEMA Design Code</b>	<b>B KVA Code</b>	M	<b>Starting Current</b>	16.1 A	
<b>Service Factor (S.F.)</b>	1.15	<b>No-load Current</b>	1.23 A		
<b>NEMA Nom. Eff.</b>	85.5	<b>Power Factor</b>	66	<b>Line-line Res. @ 25°C</b>	14.4 Ω
<b>Rating - Duty</b>	40C AMB-CONT	<b>Temp. Rise @ Rated Load</b>	63°C		
<b>S.F. Amps</b>	3.5/1.75	<b>Temp. Rise @ S.F. Load</b>	71°C		
		<b>Locked-rotor Power Factor</b>	60.4724		
		<b>Rotor inertia</b>	0.159 lb-ft <sup>2</sup>		

**Load Characteristics 460 V, 60 Hz, 1 HP**

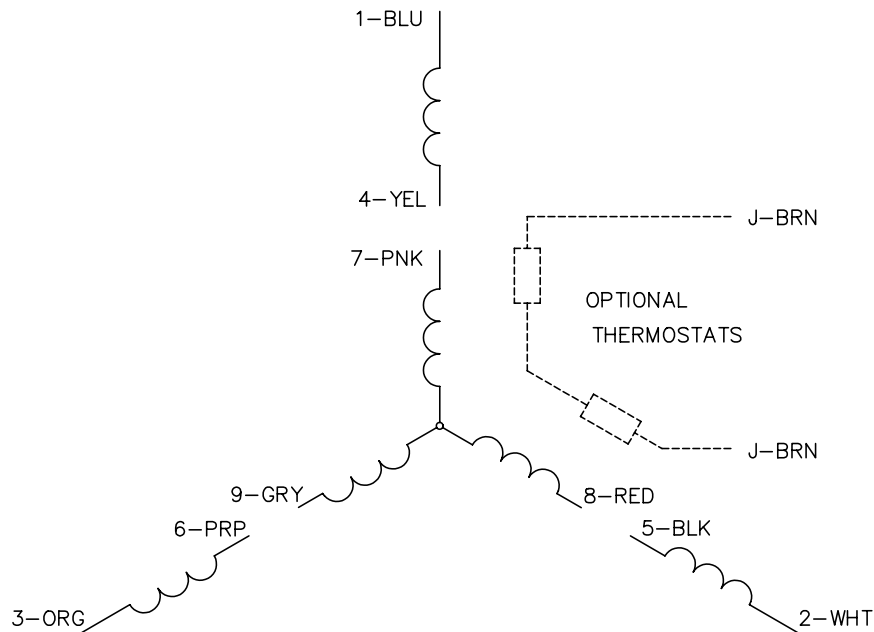
<b>% of Rated Load</b>	<b>25</b>	<b>50</b>	<b>75</b>	<b>100</b>	<b>125</b>	<b>150</b>	<b>S.F.</b>
<b>Power Factor</b>	27	43	56	66	73	78	72
<b>Efficiency</b>	70.8	81.2	84.5	85.9	85.8	85.2	85.5
<b>Speed</b>	1793	1786	1781	1773	1766	1758	1768
<b>Line amperes</b>	1.25	1.34	1.49	1.67	1.87	2.12	1.75

Performance Graph at 460V, 60Hz, 1.0HP Typical performance - Not guaranteed values

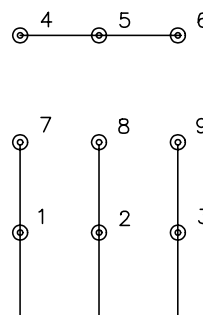




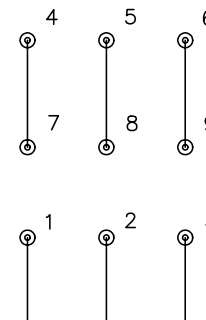
CD0005



LOW VOLTAGE  
(2Y)



HIGH VOLTAGE  
(1Y)



NOTES:

1. INTERCHANGE ANY TWO LINE LEADS TO REVERSE ROTATION.
2. OPTIONAL THERMOSTATS ARE PROVIDED WHEN SPECIFIED.
3. ACTUAL NUMBER OF INTERNAL PARALLEL CIRCUITS MAY BE A MULTIPLE OF THOSE SHOWN ABOVE.
4. LEAD COLORS ARE OPTIONAL. LEADS MUST ALWAYS BE NUMBERED AS SHOWN.

REV. DESC: REVISE TO SHOW OPTIONAL COLORS			
REV. LTR: E	BY: JLP	REVISED: 01/19/99 10:15	TDR: 0171435
9000D		FILE: AAA00005140	MDL: -
		MTL: -	

**BALDOR ELECTRIC Co.**

3PH, DV, 9 LEADS

CD0005