

BALDOR® • RELIANCE 

Product Information Packet

VFDL3514M

1.5HP, 1725RPM, 1PH, 60HZ, 56C, 3532LC, TEFC, F

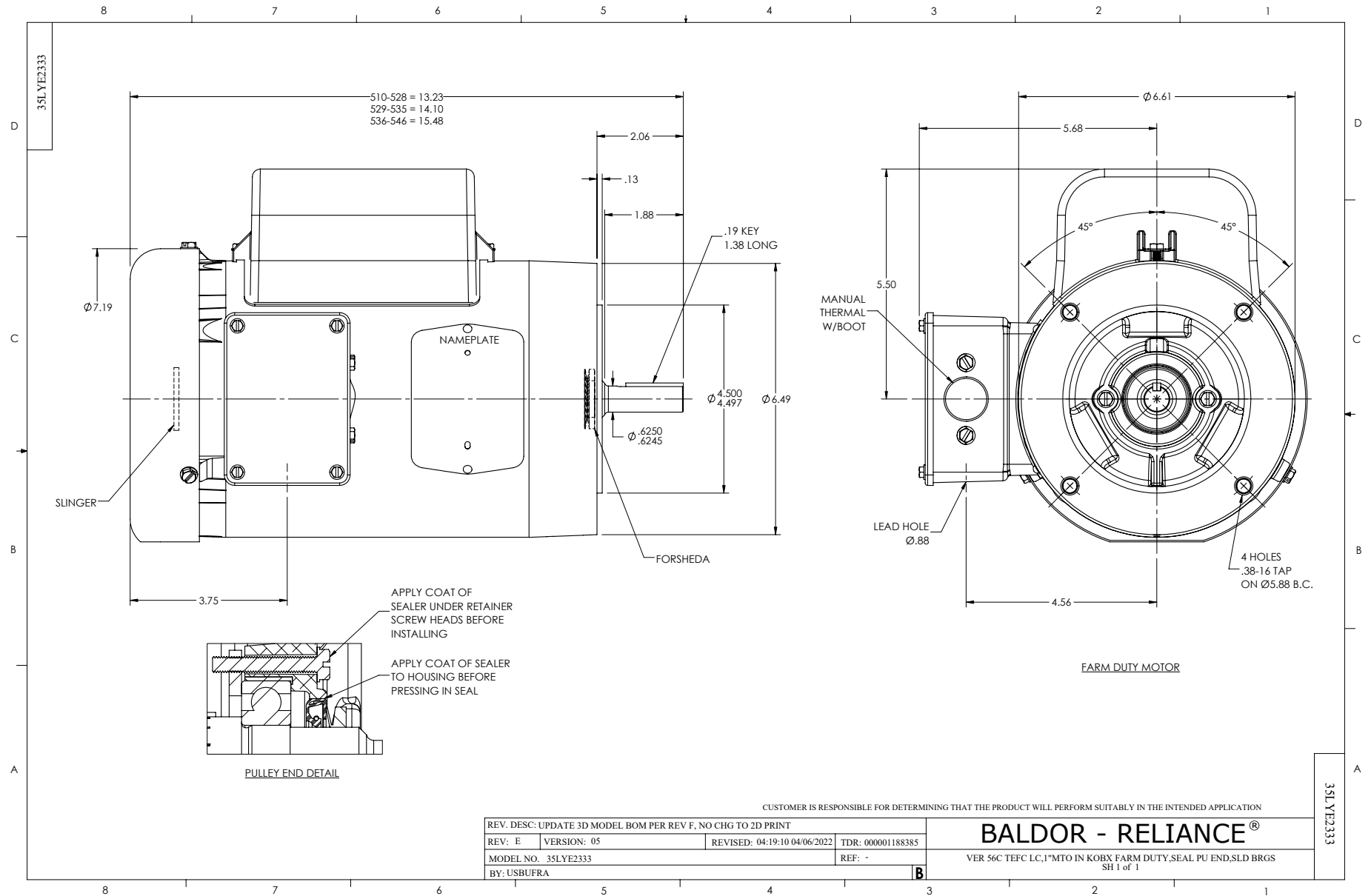
Part Detail							
Revision:	L	Status:	PRD/A	Change #:		Proprietary:	No
Type:	AC	Elec. Spec:	35WGN451	CD Diagram:	CD0320	Mfg Plant:	
Mech. Spec:	35E2333	Layout:	35LYE2333	Poles:	04	Created Date:	12-05-2013
Base:	N	Eff. Date:	09-28-2022	Leads:	4#16 A&J,2#18 B PH,1#14 #4TH		

Specs			
Catalog Number:	VF DL3514M	Insulation Class:	F
Enclosure:	TEFC	Inverter Code:	Not Inverter
Frame:	56C	KVA Code:	J
Frame Material:	Steel	Lifting Lugs:	No Lifting Lugs
Motor Letter Type:	Cap Start, Cap Run	Locked Bearing Indicator:	Locked Bearing
Output @ Frequency:	1.500 HP @ 60 HZ	Motor Lead Quantity/Wire Size:	4 @ 16 AWG, A&J
Synchronous Speed @ Frequency:	1800 RPM @ 60 HZ	Motor Lead Exit:	Ko Box
Voltage @ Frequency:	115.0 V @ 60 HZ	Motor Lead Termination:	Flying Leads
	208.0 V @ 60 HZ	Motor Type:	3532LC
	230.0 V @ 60 HZ	Mounting Arrangement:	F1
XP Class and Group:	None	Power Factor:	96
XP Division:	Not Applicable	Product Family:	General Purpose
Agency Approvals:	UR	Product Type:	FARM DUTY
	CSA	Pulley End Bearing Type:	Sealed Bearing
Auxillary Box:	No Auxillary Box	Pulley Face Code:	C-Face
Auxillary Box Lead Termination:	None	Pulley Shaft Indicator:	Standard
Base Indicator:	No Mounting	Rodent Screen:	None
Bearing Grease Type:	Polyrex EM (-20F +300F)	Shaft Extension Location:	Pulley End

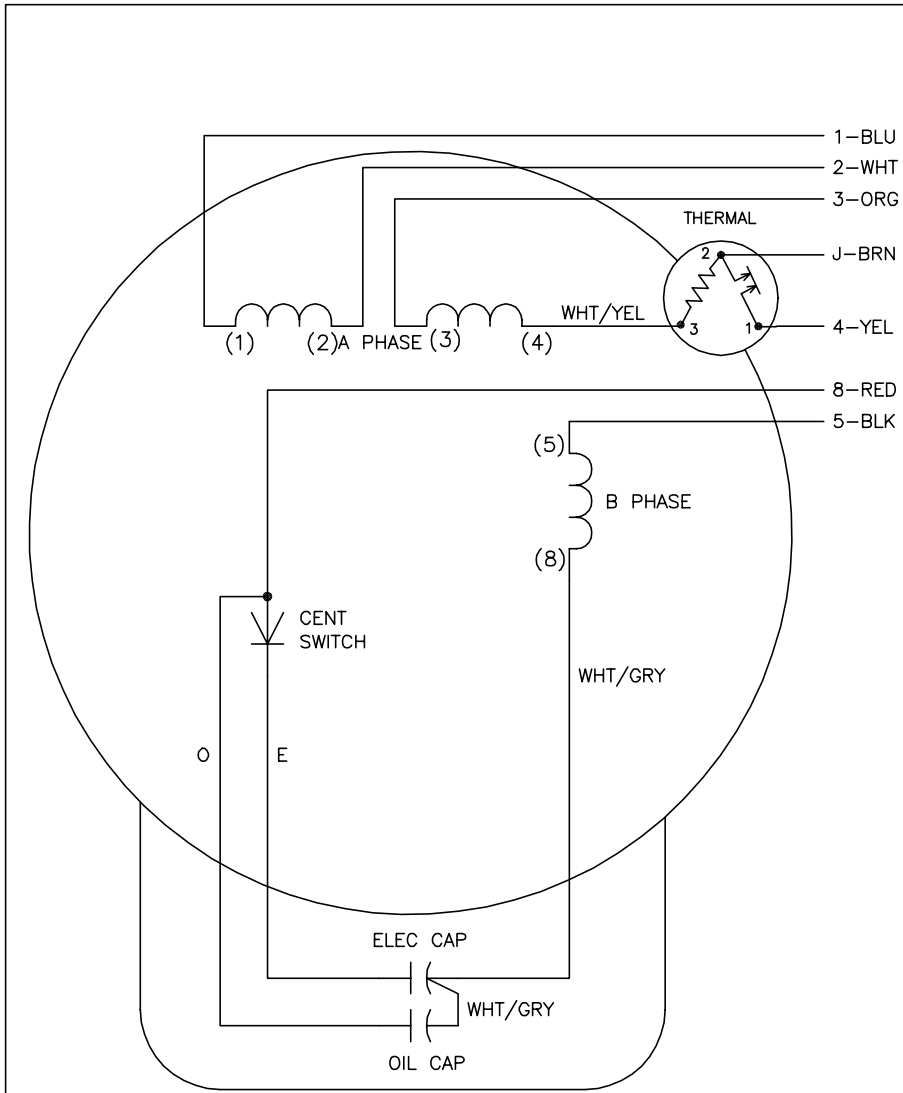
Blower:	None	Shaft Ground Indicator:	No Shaft Grounding
Current @ Voltage:	12.400 A @ 115.0 V	Shaft Rotation:	Reversible
	6.200 A @ 230.0 V	Shaft Slinger Indicator:	Shaft Slinger
	6.800 A @ 208.0 V	Speed Code:	Single Speed
Design Code:	L	Motor Standards:	NEMA
Drip Cover:	No Drip Cover	Starting Method:	Direct on line
Duty Rating:	CONT	Thermal Device - Bearing:	None
Electrically Isolated Bearing:	Not Electrically Isolated	Thermal Device - Winding:	None
Feedback Device:	NO FEEDBACK	Vibration Sensor Indicator:	No Vibration Sensor
Front Face Code:	Standard	Winding Thermal 1:	Manual Thermal Overload
Front Shaft Indicator:	None	Winding Thermal 1 Location:	KO
Heater Indicator:	No Heater	Winding Thermal 2:	None

Nameplate NP1280L										
CAT.NO.	VF DL3514M									
SPEC.	35E2333N451G1									
HP	1.5									
VOLTS	115/208-230									
AMP	12.4/6.8-6.2									
RPM	1725									
FRAME	56C			HZ	60			PH	1	
SER.F.	1.00			CODE	J		DES	L	CL	F
NEMA-NOM-EFF	80			PF	96					
RATING	40C AMB-CONT									
CC							USABLE AT 208V	N/A		
DE	6205			ODE	6203					
ENCL	TEFC			SN						

No performance data has been
assigned to this product.



CD0320



	LINE A	LINE B	JOIN	JOIN
HIGH STD	1,8	4	2,3,5	J
HIGH OPP	1,5	4	2,3,8	J
LOW STD	1,3,8	4	-	2,J,5
LOW OPP	1,3,5	4	-	2,J,8

NOTES:

1. STANDARD ROTATION IS CCW FACING END OPPOSITE SHAFT EXTENSION.
2. MULTIPLE CAPACITORS ARE CONNECTED IN PARALLEL UNLESS OTHERWISE SPECIFIED.
3. LEAD COLORS ARE OPTIONAL. LEADS MUST ALWAYS BE NUMBERED AS SHOWN.

CD0320

REV. DESC: ADD INTERNAL CONNECTION TO HELP MANUFACTURING		
REV. LTR: G	VERSION: 01	TDR: 000000941594
FILE: \AAA\00007\422	REVISED: 02:21:00 08/28/2015	BY: ENALEMO
MTL: -		

BALDOR

TYPE LC, DV, REV, THERMAL, B PH AMPS THRU HTR HVC, 7 LEAD

SH 1 of 1