

BALDOR® • RELIANCE 

Product Information Packet

VJMM3314T

15HP,3500RPM,3PH,60HZ,215JM,3731M,OPSB,F

Part Detail							
Revision:	E	Status:	INA/A	Change #:		Proprietary:	No
Type:	AC	Elec. Spec:	37WGS634	CD Diagram:	CD0005	Mfg Plant:	
Mech. Spec:	37G918	Layout:	37LYG918	Poles:	02	Created Date:	09-12-2012
Base:	N	Eff. Date:	03-08-2016	Leads:	9#14		

Specs			
Catalog Number:	VJMM3314T	Insulation Class:	F
Enclosure:	ODP	Inverter Code:	Not Inverter
Frame:	215JM	KVA Code:	G
Frame Material:	Steel	Lifting Lugs:	Standard Lifting Lugs
Output @ Frequency:	15.000 HP @ 60 HZ	Locked Bearing Indicator:	Locked Bearing
Synchronous Speed @ Frequency:	3600 RPM @ 60 HZ	Motor Lead Quantity/Wire Size:	9 @ 14 AWG
Voltage @ Frequency:	460.0 V @ 60 HZ	Motor Lead Exit:	Ko Box
	230.0 V @ 60 HZ	Motor Lead Termination:	Flying Leads
	208.0 V @ 60 HZ	Motor Type:	3731M
XP Division:	Not Applicable	Mounting Arrangement:	F1
Agency Approvals:	CSA	Power Factor:	86
	UR	Product Family:	General Purpose
Auxillary Box:	No Auxillary Box	Pulley End Bearing Type:	Ball
Auxillary Box Lead Termination:	None	Pulley Face Code:	C-Face
Base Indicator:	N	Pulley Shaft Indicator:	Tapped & Key
Bearing Grease Type:	Polyrex EM (-20F +300F)	Rodent Screen:	Included
Blower:	None	Shaft Extension Location:	Pulley End
Current @ Voltage:	18.000 A @ 460.0 V	Shaft Ground Indicator:	No Shaft Grounding

	36.000 A @ 230.0 V	Shaft Rotation:	Reversible
	39.000 A @ 208.0 V	Shaft Slinger Indicator:	Shaft Slinger
Design Code:	B	Speed Code:	Single Speed
Drip Cover:	Drip Cover	Motor Standards:	NEMA
Duty Rating:	CONT	Starting Method:	Direct on line
Electrically Isolated Bearing:	Not Electrically Isolated	Thermal Device - Bearing:	None
Feedback Device:	NO FEEDBACK	Thermal Device - Winding:	None
Front Face Code:	Drip Cover Mounting	Vibration Sensor Indicator:	No Vibration Sensor
Front Shaft Indicator:	None	Winding Thermal 1:	None
Heater Indicator:	No Heater	Winding Thermal 2:	None

Nameplate NP1256L										
CAT.NO.	VJMM3314T									
SPEC.	37G918S634H1									
HP	15									
VOLTS	208-230/460									
AMP	39-36/18									
RPM	3500									
FRAME	215JM				HZ	60			PH	3
SER.F.	1.15		CODE	G	DES	B		CLASS	F	
NEMA-NOM-EFF	89.5		PF	86						
RATING	40C AMB-CONT									
CC	010A				USABLE AT 208V			39		
DE	6309				ODE	6206				
ENCL	OPSB		SN							

AC Induction Motor Performance Data

Record # 30112

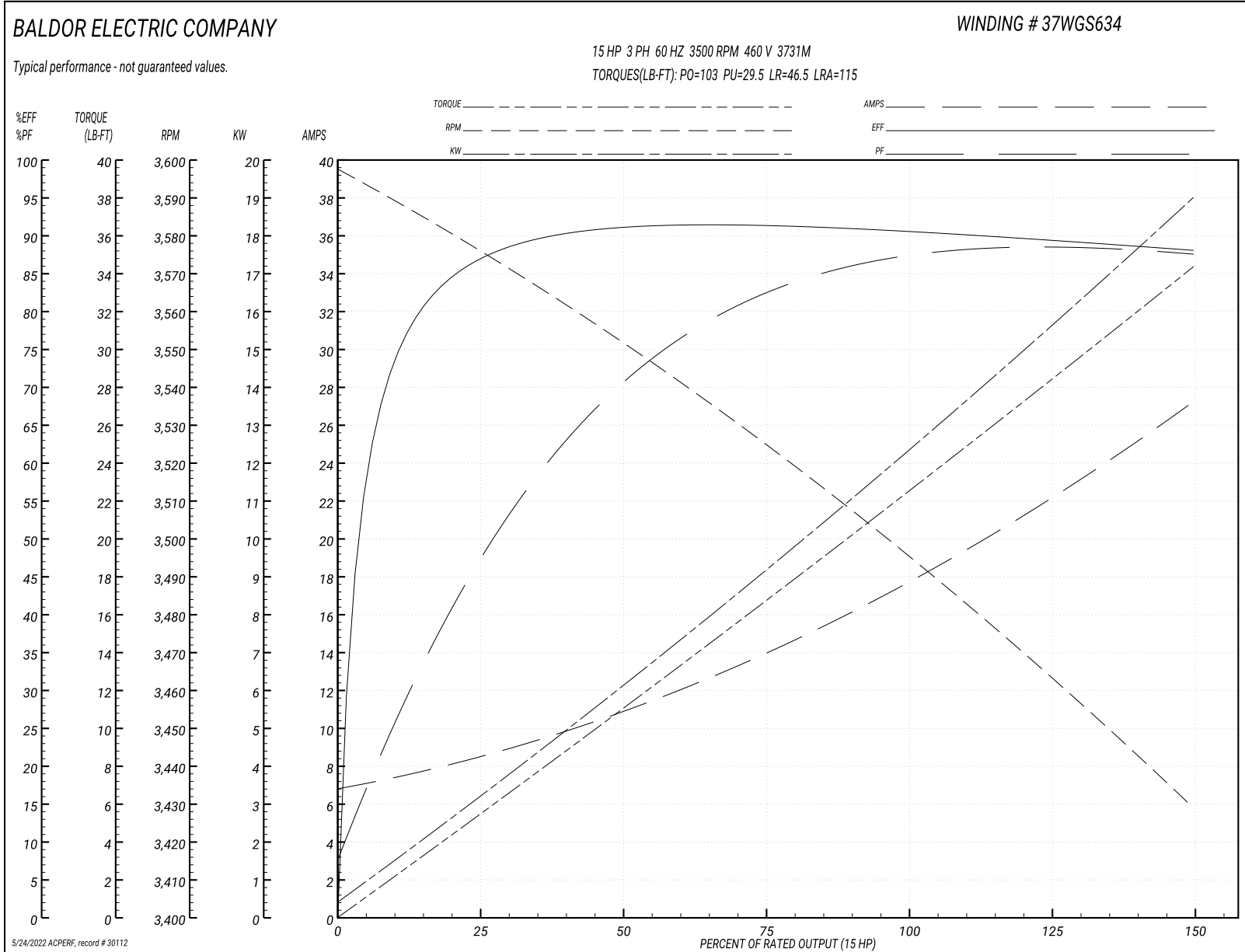
Typical performance - not guaranteed values

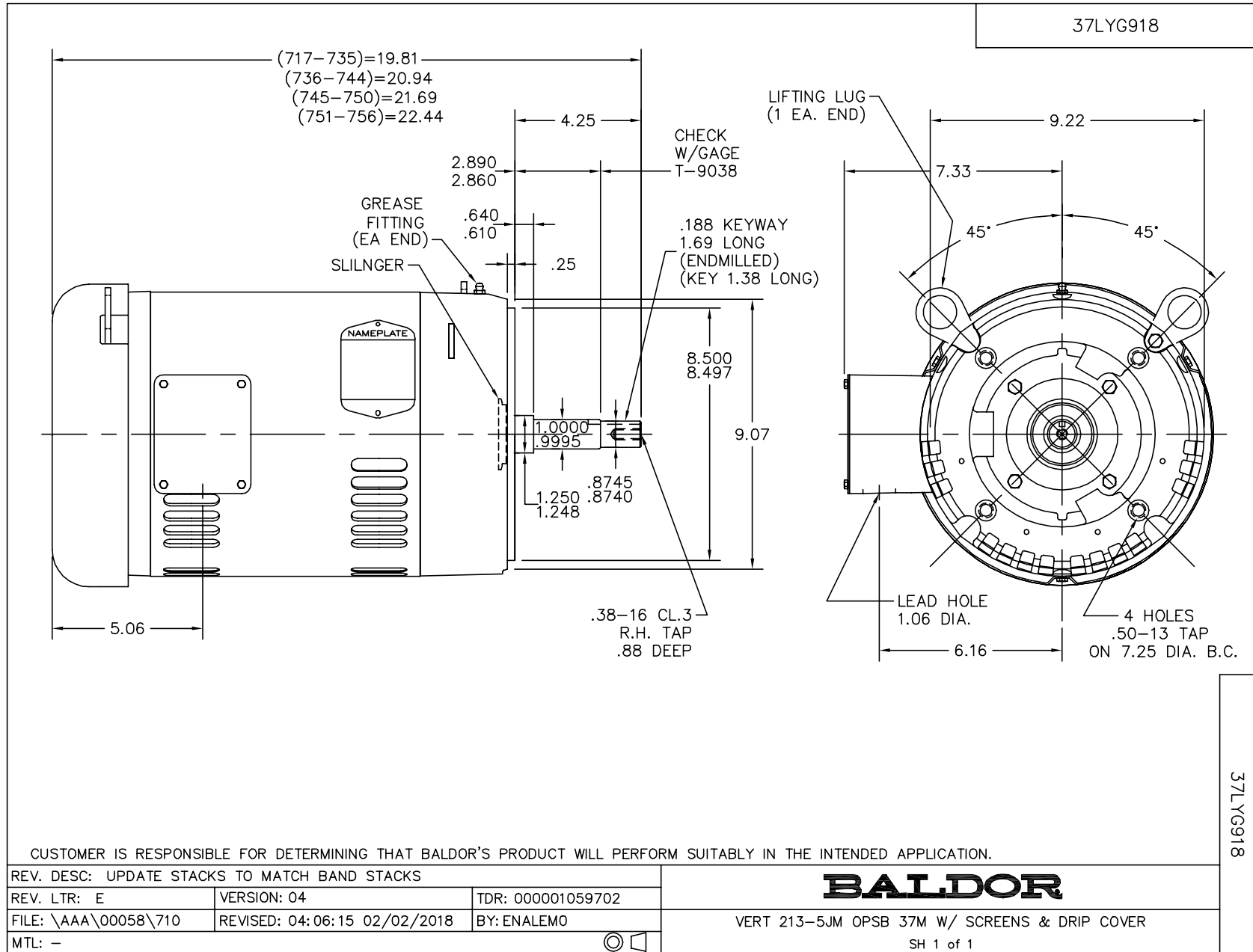
Winding: 37WGS634-R001		Type: 3731M		Enclosure: OPSB	
Nameplate Data			460 V, 60 Hz: High Voltage Connection		
Rated Output (HP)	15	Full Load Torque	22.5 LB-FT		
Volts	208-230/460	Start Configuration	direct on line		
Full Load Amps	39-36/18	Breakdown Torque	103 LB-FT		
R.P.M.	3500	Pull-up Torque	29.5 LB-FT		
Hz	60 Phase	3	Locked-rotor Torque	46.5 LB-FT	
NEMA Design Code	B KVA Code	G	Starting Current	115 A	
Service Factor (S.F.)	1.15	No-load Current	7.12 A		
NEMA Nom. Eff.	89.5	Power Factor	86	Line-line Res. @ 25°C	0.694 Ω
Rating - Duty	40C	AMB-CONT	Temp. Rise @ Rated Load	41°C	
S.F. Amps			Temp. Rise @ S.F. Load	52°C	
			Locked-rotor Power Factor	33	
			Rotor inertia	0.282 LB-FT ²	

Load Characteristics 460 V, 60 Hz, 15 HP

% of Rated Load	25	50	75	100	125	150	S.F.
Power Factor	49	72	82	86	88	88	87
Efficiency	86.4	90.7	91	90.3	89.5	87.9	89.9
Speed	3574.5	3551.6	3525.5	3496.5	3463.9	3428.2	3477
Line amperes	8.1	10.6	14.1	18	22.2	27.1	20.6

Performance Graph at 460V, 60Hz, 15.0HP Typical performance - Not guaranteed values





CD0005



LOW VOLTAGE
(2Y)



LINE

HIGH VOLTAGE
(1Y)



LINE

NOTES:

1. INTERCHANGE ANY TWO LINE LEADS TO REVERSE ROTATION.
2. OPTIONAL THERMOSTATS ARE PROVIDED WHEN SPECIFIED.
3. ACTUAL NUMBER OF INTERNAL PARALLEL CIRCUITS MAY BE A MULTIPLE OF THOSE SHOWN ABOVE.
4. LEAD COLORS ARE OPTIONAL. LEADS MUST ALWAYS BE NUMBERED AS SHOWN.

REV. DESC: REVISE TO SHOW OPTIONAL COLORS

REV. LTR: E BY: JLP

REVISED: 01/19/99 10:15

TDR: 0171435

9000D

FILE: AAA00005140

MDL: -

MTL: -

BALDOR ELECTRIC Co.

3PH, DV, 9 LEADS

CD0005