

**BALDOR® • RELIANCE** 

**Product Information Packet**

**VL3514**

**1.5HP, 1725RPM, 1PH, 60HZ, 56C, 3532LC, TEFC, F**

Part Detail							
Revision:	H	Status:	PRD/A	Change #:		Proprietary:	No
Type:	AC	Elec. Spec:	35WGG242	CD Diagram:	CD0055	Mfg Plant:	
Mech. Spec:	35E022	Layout:	35LYE022	Poles:	04	Created Date:	08-01-2022
Base:	N	Eff. Date:	09-22-2023	Leads:	6#18		

Specs			
Catalog Number:	VL3514	Insulation Class:	F
Enclosure:	TEFC	Inverter Code:	Not Inverter
Frame:	56C	KVA Code:	H
Frame Material:	Steel	Lifting Lugs:	No Lifting Lugs
Motor Letter Type:	Cap Start, Cap Run	Locked Bearing Indicator:	Locked Bearing
Output @ Frequency:	1.500 HP @ 60 HZ	Motor Lead Quantity/Wire Size:	7 @ 18 AWG
Synchronous Speed @ Frequency:	1800 RPM @ 60 HZ	Motor Lead Exit:	Ko Box
Voltage @ Frequency:	115.0 V @ 60 HZ	Motor Lead Termination:	Flying Leads
	230.0 V @ 60 HZ	Motor Type:	3532LC
XP Class and Group:	None	Mounting Arrangement:	F1
XP Division:	Not Applicable	Power Factor:	98
Agency Approvals:	UR	Product Family:	General Purpose
	CSA	Pulley End Bearing Type:	Ball
Auxillary Box:	No Auxillary Box	Pulley Face Code:	C-Face
Auxillary Box Lead Termination:	None	Pulley Shaft Indicator:	Standard
Base Indicator:	No Mounting	Rodent Screen:	None
Bearing Grease Type:	Polyrex EM (-20F +300F)	Shaft Extension Location:	Pulley End
Blower:	None	Shaft Ground Indicator:	No Shaft Grounding

<b>Current @ Voltage:</b>	12.200 A @ 115.0 V	<b>Shaft Rotation:</b>	Reversible
	6.100 A @ 230.0 V	<b>Shaft Slinger Indicator:</b>	No Slinger
<b>Design Code:</b>	L	<b>Speed Code:</b>	Single Speed
<b>Drip Cover:</b>	No Drip Cover	<b>Motor Standards:</b>	NEMA
<b>Duty Rating:</b>	CONT	<b>Starting Method:</b>	Direct on line
<b>Electrically Isolated Bearing:</b>	Not Electrically Isolated	<b>Thermal Device - Bearing:</b>	None
<b>Feedback Device:</b>	NO FEEDBACK	<b>Thermal Device - Winding:</b>	None
<b>Front Face Code:</b>	Standard	<b>Vibration Sensor Indicator:</b>	No Vibration Sensor
<b>Front Shaft Indicator:</b>	None	<b>Winding Thermal 1:</b>	None
<b>Heater Indicator:</b>	No Heater	<b>Winding Thermal 2:</b>	None

Nameplate NP1256L										
CAT.NO.	VL3514									
SPEC.	35E022G242									
HP	1.5									
VOLTS	115/230									
AMP	12.2/6.1									
RPM	1725									
FRAME	56C				HZ	60			PH	1
SER.F.	1.15		CODE	H	DES	L		CLASS	F	
NEMA-NOM-EFF	80		PF	98						
RATING	40C AMB-CONT									
CC									USABLE AT 208V	N/A
DE	6205				ODE	6203				
ENCL	TEFC		SN							

**AC Induction Motor Performance Data**

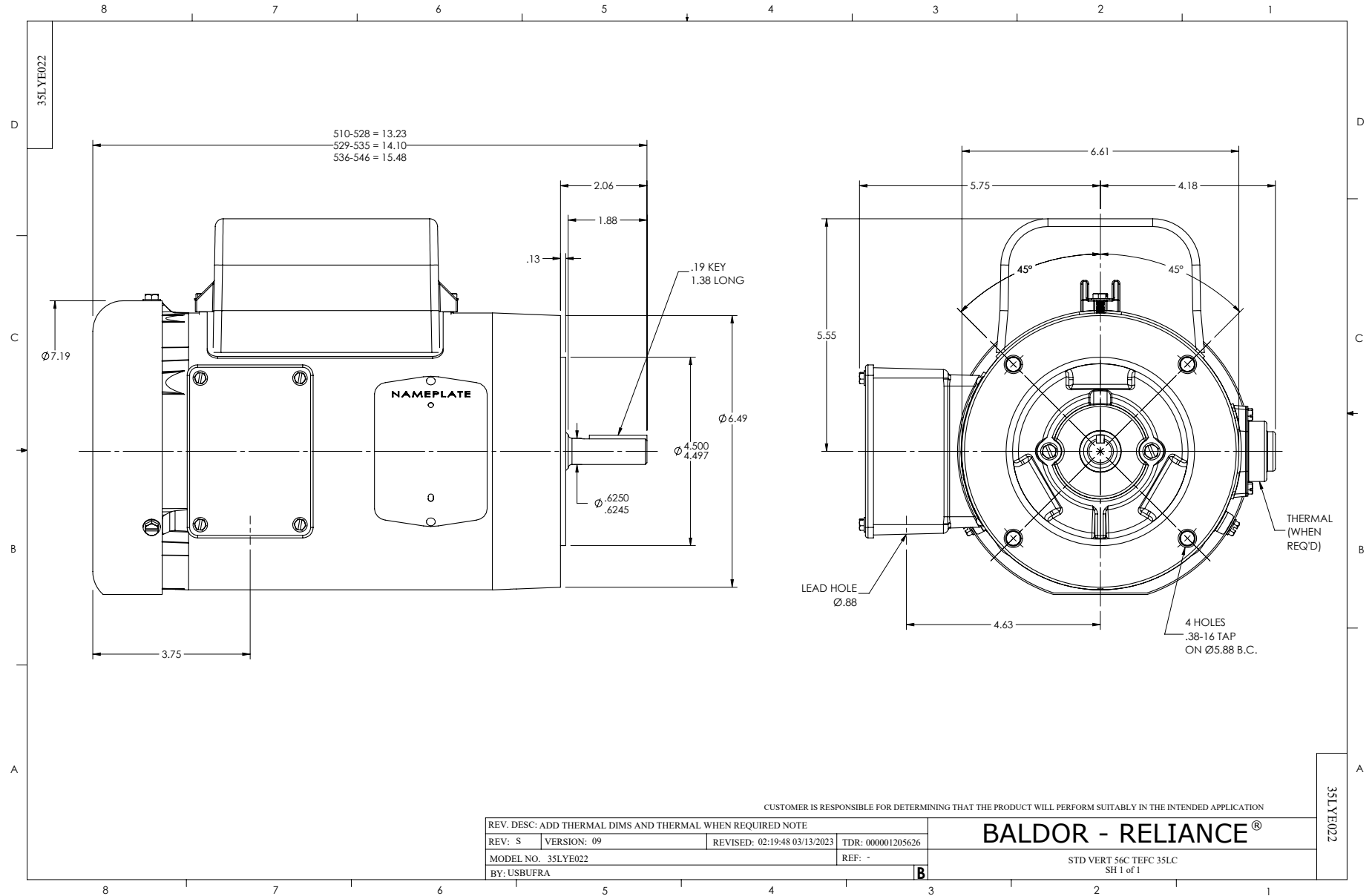
Record # 88494

Typical performance - not guaranteed values

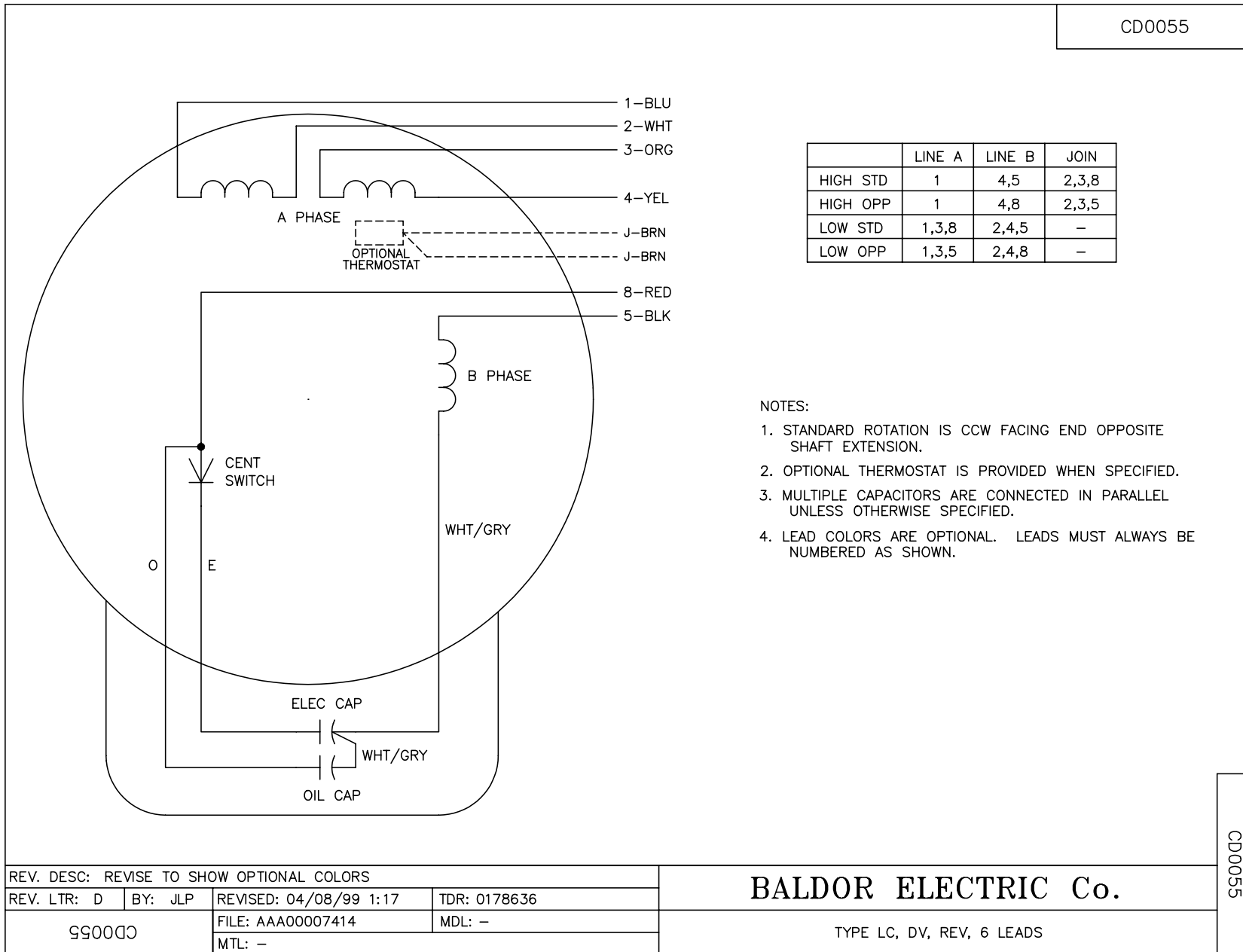
<b>Winding:</b> 35WGG242-R001		<b>Type:</b> 3532LC		<b>Enclosure:</b> TEFC	
<b>Nameplate Data</b>			<b>230 V, 60 Hz: High Voltage Connection</b>		
<b>Rated Output (HP)</b>	1.5		<b>Full Load Torque</b>	4.566 LB-FT	
<b>Volts</b>	115/230		<b>Start Configuration</b>	direct on line	
<b>Full Load Amps</b>	13.4/6.7		<b>Breakdown Torque</b>	9.93 LB-FT	
<b>R.P.M.</b>	1725		<b>Pull-up Torque</b>	8.07 LB-FT	
<b>Hz</b>	<b>60 Phase</b>	1	<b>Locked-rotor Torque</b>	13 LB-FT	
<b>NEMA Design Code</b>	<b>L KVA Code</b>	H	<b>Starting Current</b>	44 A	
<b>Service Factor (S.F.)</b>	1.15		<b>No-load Current</b>	0.84 A	
<b>NEMA Nom. Eff.</b>	<b>80 Power Factor</b>	90	<b>Line-line Res. @ 25°C</b>	2.1263 Ω A Ph 1.3142 Ω B Ph	
<b>Rating - Duty</b>	40C AMB-CONT		<b>Temp. Rise @ Rated Load</b>	61°C	
<b>S.F. Amps</b>			<b>Temp. Rise @ S.F. Load</b>	84°C	

**Load Characteristics 230 V, 60 Hz, 1.5 HP**

<b>% of Rated Load</b>	<b>25</b>	<b>50</b>	<b>75</b>	<b>100</b>	<b>125</b>	<b>150</b>	<b>S.F.</b>
<b>Power Factor</b>	94	98	98	98	97	96	97
<b>Efficiency</b>	71.4	82.5	84.1	82.3	77.7	70.5	79.5
<b>Speed</b>	1782.1	1765.3	1746.2	1722.8	1689.8	1641.6	1703
<b>Line amperes</b>	1.77	3.01	4.42	6.03	8.04	10.7	7.24



CD0055



REV. DESC: REVISE TO SHOW OPTIONAL COLORS			
REV. LTR: D	BY: JLP	REVISED: 04/08/99 1:17	TDR: 0178636
990000		FILE: AAA00007414	MDL: -
		MTL: -	

**BALDOR ELECTRIC Co.**

TYPE LC, DV, REV, 6 LEADS

CD0055