

BALDOR® • RELIANCE 

Product Information Packet

VM3546T

1HP,1750RPM,3PH,60HZ,143TC,3516M,TEFC,F1

Part Detail							
Revision:	K	Status:	NLA/A	Change #:		Proprietary:	No
Type:	AC	Elec. Spec:	35WGP674	CD Diagram:	CD0005	Mfg Plant:	
Mech. Spec:	35A003	Layout:	35LYA003	Poles:	04	Created Date:	05-26-2010
Base:	N	Eff. Date:	03-08-2016	Leads:	9#18		

Specs			
Catalog Number:	VM3546T	Heater Indicator:	No Heater
Enclosure:	TEFC	Insulation Class:	F
Frame:	143TC	Inverter Code:	Not Inverter
Frame Material:	Steel	KVA Code:	M
Motor Letter Type:	Three Phase	Lifting Lugs:	No Lifting Lugs
Output @ Frequency:	1.000 HP @ 60 HZ	Locked Bearing Indicator:	Locked Bearing
Synchronous Speed @ Frequency:	1800 RPM @ 60 HZ	Motor Lead Quantity/Wire Size:	9 @ 18 AWG
Voltage @ Frequency:	460.0 V @ 60 HZ	Motor Lead Exit:	Ko Box
	230.0 V @ 60 HZ	Motor Lead Termination:	Flying Leads
	208.0 V @ 60 HZ	Motor Type:	3516M
Haz Area Class and Group:	None	Mounting Arrangement:	F1
Haz Area Division:	Not Applicable	Power Factor:	73
Agency Approvals:	CSA	Product Family:	General Purpose
	UR	Pulley End Bearing Type:	Ball
Auxillary Box:	No Auxillary Box	Pulley Face Code:	C-Face
Auxillary Box Lead Termination:	None	Pulley Shaft Indicator:	Standard
Base Indicator:	No Mounting	Rodent Screen:	None
Bearing Grease Type:	Polyrex EM (-20F +300F)	Shaft Extension Location:	Pulley End

Blower:	None	Shaft Ground Indicator:	No Shaft Grounding
Current @ Voltage:	3.380 A @ 208.0 V	Shaft Rotation:	Reversible
	3.120 A @ 230.0 V	Shaft Slinger Indicator:	No Slinger
	1.560 A @ 460.0 V	Speed Code:	Single Speed
Design Code:	B	Motor Standards:	NEMA
Drip Cover:	No Drip Cover	Starting Method:	Direct on line
Duty Rating:	CONT	Thermal Device - Bearing:	None
Electrically Isolated Bearing:	Not Electrically Isolated	Thermal Device - Winding:	None
Feedback Device:	NO FEEDBACK	Vibration Sensor Indicator:	No Vibration Sensor
Front Face Code:	Standard	Winding Thermal 1:	None
Front Shaft Indicator:	None	Winding Thermal 2:	None

Nameplate NP1256L										
CAT.NO.	VM3546T									
SPEC.	35A003P674H4									
HP	1									
VOLTS	208-230/460									
AMP	3.38-3.12/1.56									
RPM	1750									
FRAME	143TC				HZ	60			PH	3
SER.F.	1.15		CODE	M	DES	B		CLASS	F	
NEMA-NOM-EFF	82.5		PF	73						
RATING	40C AMB-CONT									
CC	010A									
DE	6205				ODE	6203				
ENCL	TEFC		SN							

AC Induction Motor Performance Data

Record # 25215

Typical performance - not guaranteed values

Winding: 35WGP674-R001		Type: 3516M	Enclosure: TEFC	
Nameplate Data			460 V, 60 Hz: High Voltage Connection	
Rated Output (HP)	1	Full Load Torque	2.99 LB-FT	
Volts	208-230/460	Start Configuration	direct on line	
Full Load Amps	3.38-3.12/1.56	Breakdown Torque	17.8 LB-FT	
R.P.M.	1750	Pull-up Torque	8.32 LB-FT	
Hz	60 Phase	Locked-rotor Torque	10.4 LB-FT	
NEMA Design Code	B KVA Code	Starting Current	13.2 A	
Service Factor (S.F.)	1.15	No-load Current	1.04 A	
NEMA Nom. Eff.	82.5 Power Factor	Line-line Res. @ 25°C	16.3 Ω	
Rating - Duty	40C AMB-CONT	Temp. Rise @ Rated Load	41°C	
S.F. Amps		Temp. Rise @ S.F. Load	50°C	
		Locked-rotor Power Factor	63	
		Rotor inertia	0.0946 LB-FT ²	

Load Characteristics 460 V, 60 Hz, 1 HP

% of Rated Load	25	50	75	100	125	150	S.F.
Power Factor	32	50	63	73	79	83	77
Efficiency	66.7	77.9	81.3	82.6	82.6	81.6	82.6
Speed	1788	1776	1764	1750	1735	1719	1741
Line amperes	1.11	1.2	1.36	1.56	1.77	2.06	1.69

Performance Graph at 460V, 60Hz, 1.0HP Typical performance - Not guaranteed values

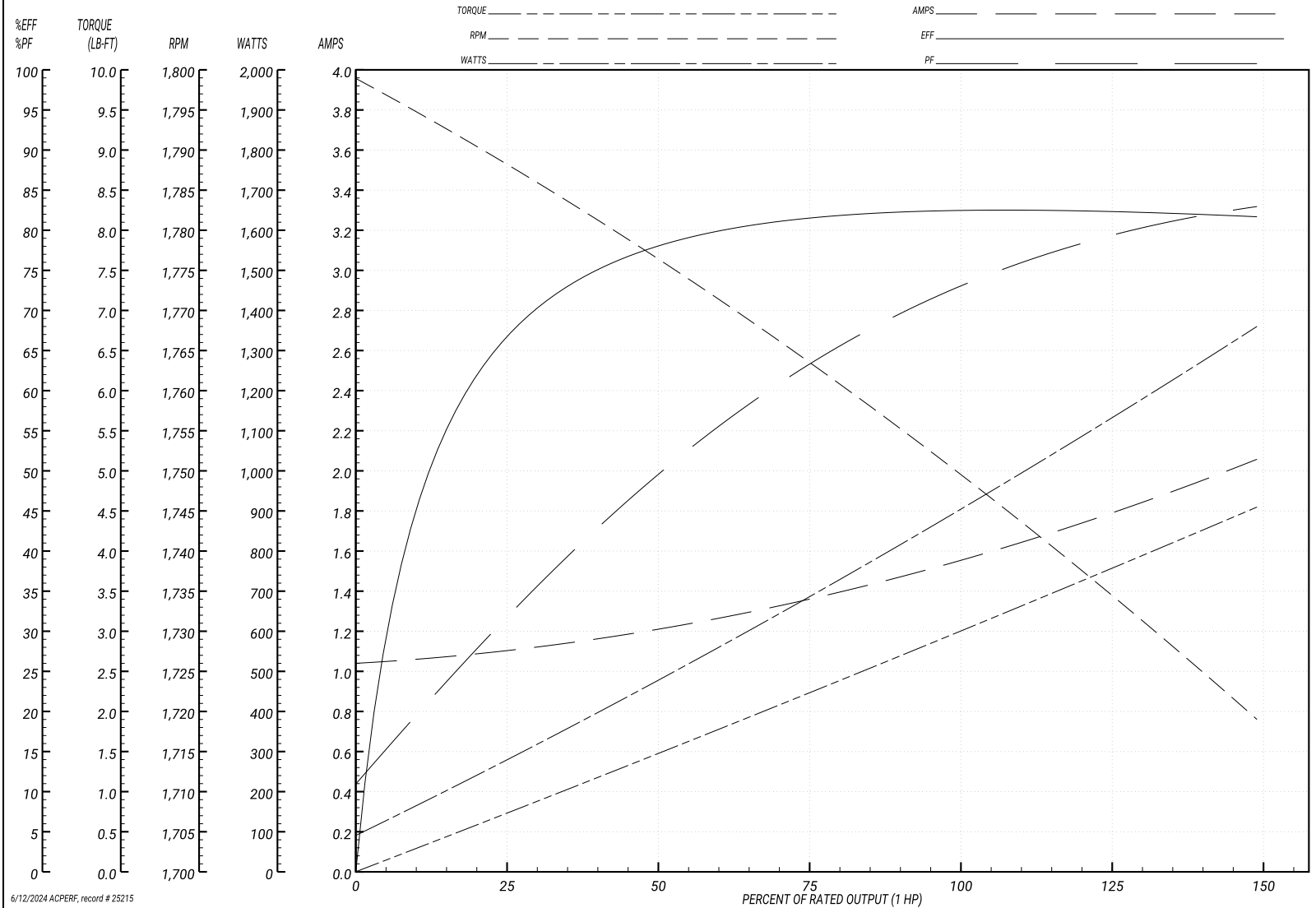
BALDOR ELECTRIC COMPANY

WINDING # 35WGP674

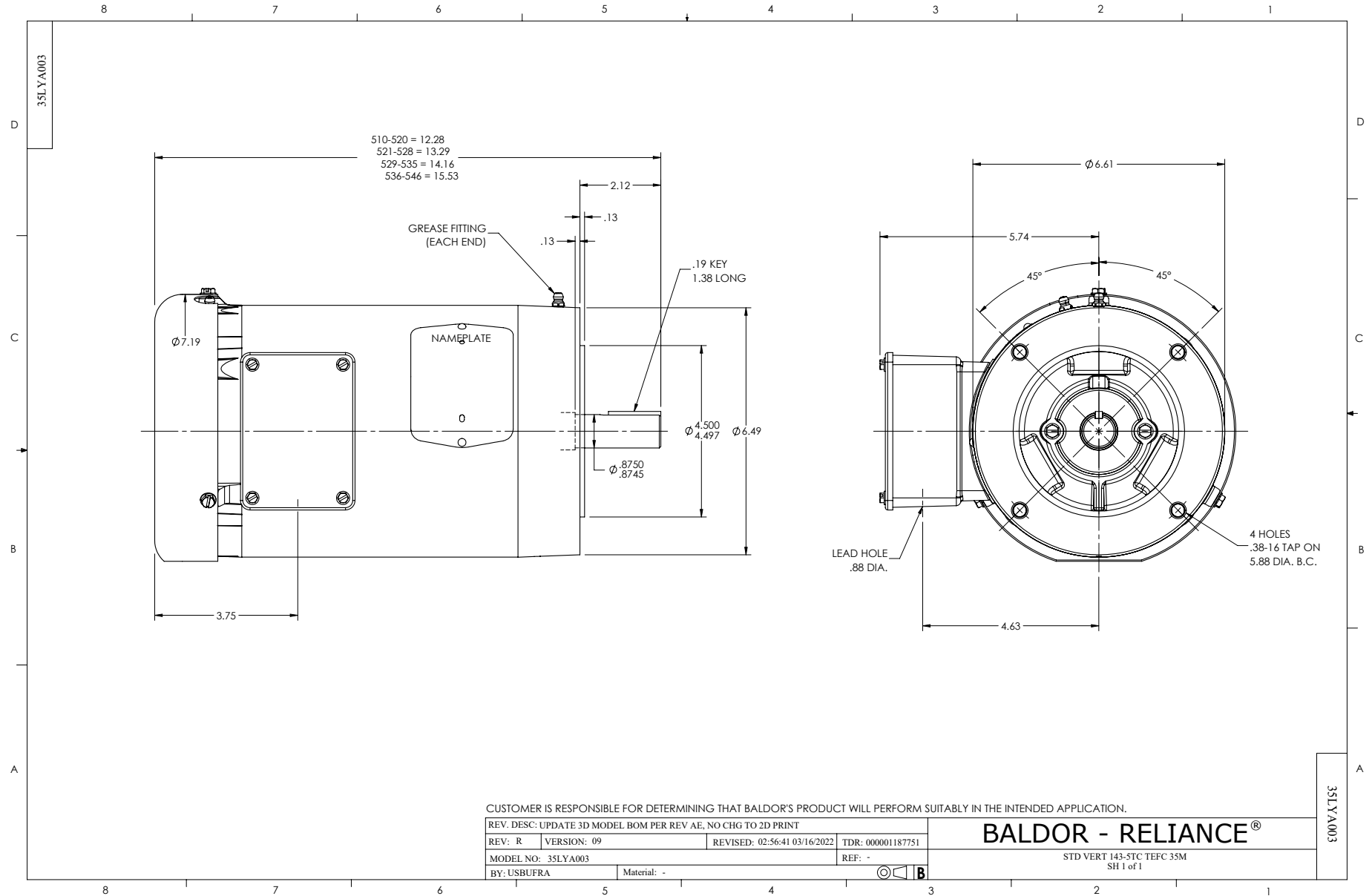
Typical performance - not guaranteed values.

1 HP 3 PH 60 HZ 1750 RPM 460 V 3516M

TORQUES(LB-FT): PO=17.8 PU=8.32 LR=10.4 LRA=13.2



6/12/2024 ACPERF, record # 25215



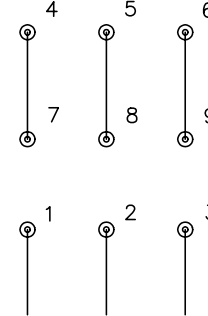
CD0005



LOW VOLTAGE
(2Y)



HIGH VOLTAGE
(1Y)



NOTES:

1. INTERCHANGE ANY TWO LINE LEADS TO REVERSE ROTATION.
2. OPTIONAL THERMOSTATS ARE PROVIDED WHEN SPECIFIED.
3. ACTUAL NUMBER OF INTERNAL PARALLEL CIRCUITS MAY BE A MULTIPLE OF THOSE SHOWN ABOVE.
4. LEAD COLORS ARE OPTIONAL. LEADS MUST ALWAYS BE NUMBERED AS SHOWN.

REV. DESC: REVISE TO SHOW OPTIONAL COLORS			
REV. LTR: E	BY: JLP	REVISED: 01/19/99 10:15	TDR: 0171435
90000		FILE: AAA00005140	MDL: -
		MTL: -	

BALDOR ELECTRIC Co.

3PH, DV, 9 LEADS

CD0005