

BALDOR® • RELIANCE 

Product Information Packet

VM3557

1.5HP, 1140RPM, 3PH, 60HZ, 56C, 3529M, TEFC, F1

Part Detail							
Revision:	J	Status:	INA/A	Change #:		Proprietary:	No
Type:	AC	Elec. Spec:	35WGM899	CD Diagram:	CD0005	Mfg Plant:	
Mech. Spec:	35A013	Layout:	35LYA013	Poles:	06	Created Date:	01-12-2011
Base:	N	Eff. Date:	05-24-2016	Leads:	9#18		

Specs			
Catalog Number:	VM3557	Heater Indicator:	No Heater
Enclosure:	TEFC	Insulation Class:	F
Frame:	56C	Inverter Code:	Not Inverter
Frame Material:	Steel	KVA Code:	K
Motor Letter Type:	Three Phase	Lifting Lugs:	No Lifting Lugs
Output @ Frequency:	1.500 HP @ 60 HZ	Locked Bearing Indicator:	Locked Bearing
Synchronous Speed @ Frequency:	1200 RPM @ 60 HZ	Motor Lead Quantity/Wire Size:	9 @ 18 AWG
Voltage @ Frequency:	460.0 V @ 60 HZ	Motor Lead Exit:	Ko Box
	230.0 V @ 60 HZ	Motor Lead Termination:	Flying Leads
	208.0 V @ 60 HZ	Motor Type:	3529M
XP Class and Group:	None	Mounting Arrangement:	F1
XP Division:	Not Applicable	Power Factor:	72
Agency Approvals:	CSA	Product Family:	General Purpose
	UR	Pulley End Bearing Type:	Ball
Auxillary Box:	No Auxillary Box	Pulley Face Code:	C-Face
Auxillary Box Lead Termination:	None	Pulley Shaft Indicator:	Standard
Base Indicator:	No Mounting	Rodent Screen:	None
Bearing Grease Type:	Polyrex EM (-20F +300F)	Shaft Extension Location:	Pulley End

Blower:	None	Shaft Ground Indicator:	No Shaft Grounding
Current @ Voltage:	5.000 A @ 208.0 V	Shaft Rotation:	Reversible
	4.900 A @ 230.0 V	Shaft Slinger Indicator:	No Slinger
	2.450 A @ 460.0 V	Speed Code:	Single Speed
Design Code:	B	Motor Standards:	NEMA
Drip Cover:	No Drip Cover	Starting Method:	Direct on line
Duty Rating:	CONT	Thermal Device - Bearing:	None
Electrically Isolated Bearing:	Not Electrically Isolated	Thermal Device - Winding:	None
Feedback Device:	NO FEEDBACK	Vibration Sensor Indicator:	No Vibration Sensor
Front Face Code:	Standard	Winding Thermal 1:	None
Front Shaft Indicator:	None	Winding Thermal 2:	None

Nameplate NP1256L										
CAT.NO.	VM3557									
SPEC.	35A013M899G1									
HP	1.5									
VOLTS	208-230/460									
AMP	5-4.9/2.45									
RPM	1140									
FRAME	56C				HZ	60			PH	3
SER.F.	1.15		CODE	K	DES	B		CLASS	F	
NEMA-NOM-EFF	80		PF	72						
RATING	40C AMB-CONT									
CC									USABLE AT 208V	N/A
DE	6205				ODE	6203				
ENCL	TEFC			SN						

AC Induction Motor Performance Data

Record # 33199

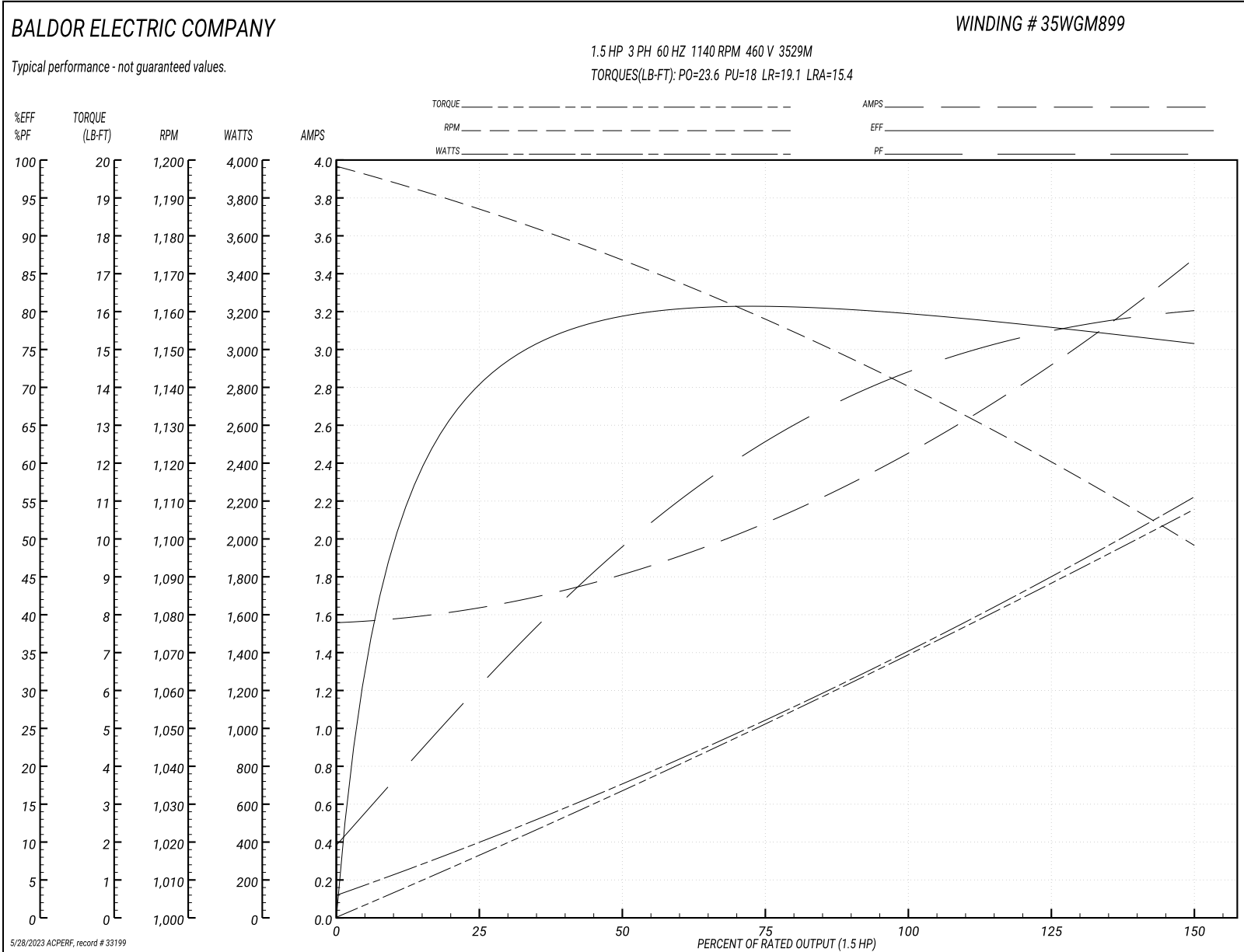
Typical performance - not guaranteed values

Winding: 35WGM899-R001			Type: 3529M			Enclosure: TEFC		
Nameplate Data				460 V, 60 Hz: High Voltage Connection				
Rated Output (HP)	1.5		Full Load Torque	6.97 LB-FT				
Volts	208-230/460		Start Configuration	direct on line				
Full Load Amps	5.1-5/2.5		Breakdown Torque	23.6 LB-FT				
R.P.M.	1140		Pull-up Torque	18 LB-FT				
Hz	60 Phase	3	Locked-rotor Torque	19.1 LB-FT				
NEMA Design Code	B KVA Code	K	Starting Current	15.4 A				
Service Factor (S.F.)	1.15		No-load Current	1.56 A				
NEMA Nom. Eff.	80 Power Factor	72	Line-line Res. @ 25°C	11.121 Ω				
Rating - Duty	40C AMB-CONT		Temp. Rise @ Rated Load	84°C				
S.F. Amps			Temp. Rise @ S.F. Load	104°C				
			Locked-rotor Power Factor	50				
			Rotor inertia	0.172 LB-FT ²				

Load Characteristics 460 V, 60 Hz, 1.5 HP

% of Rated Load	25	50	75	100	125	150	S.F.
Power Factor	31	49	63	72	77	80	75
Efficiency	70.6	79.3	81.3	80.6	78.6	75.7	79.4
Speed	1186.7	1173	1158.4	1140.3	1121.1	1097.7	1129
Line amperes	1.63	1.81	2.09	2.45	2.92	3.48	2.73

Performance Graph at 460V, 60Hz, 1.5HP Typical performance - Not guaranteed values



AC Induction Motor Performance Data

Record # 53824

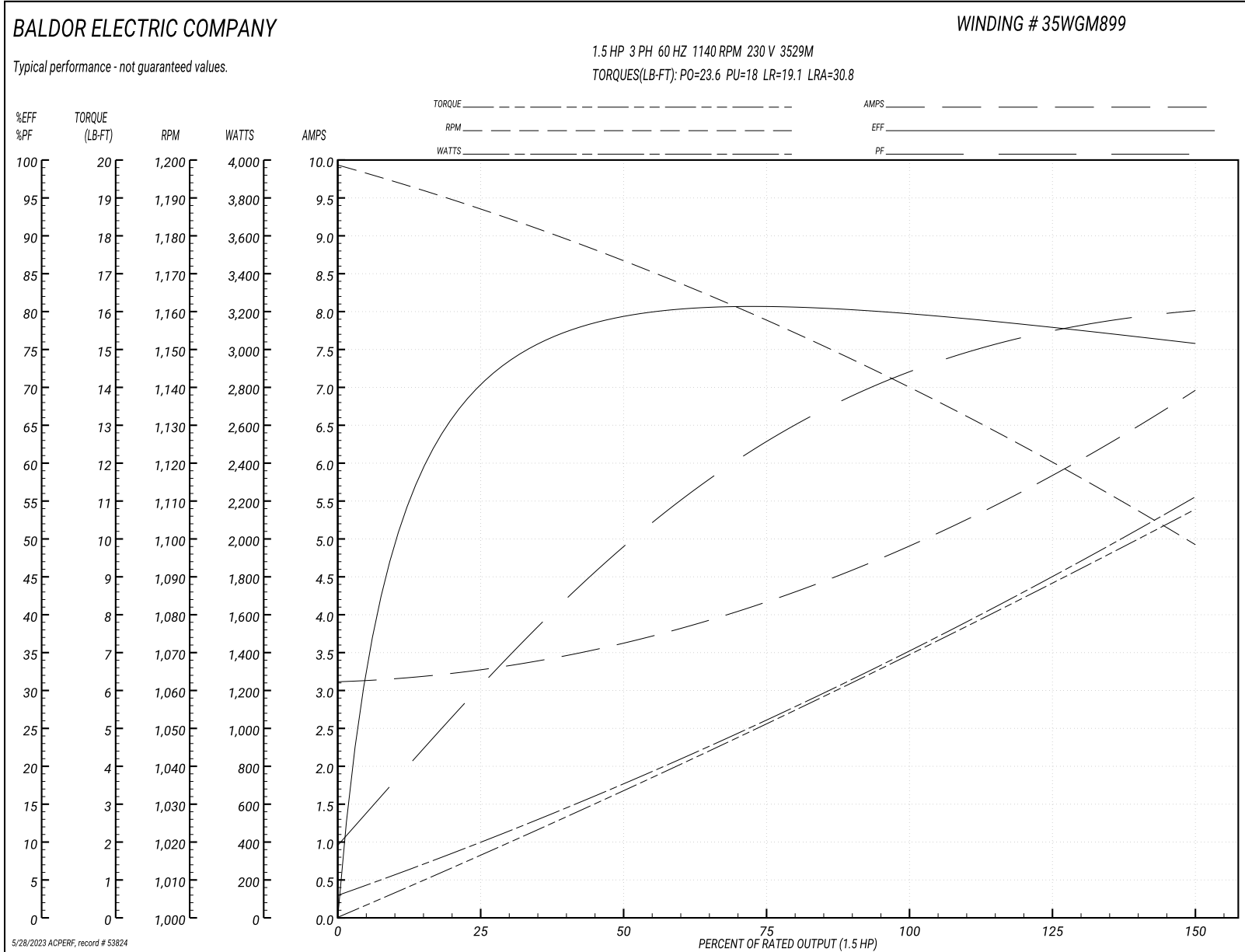
Typical performance - not guaranteed values

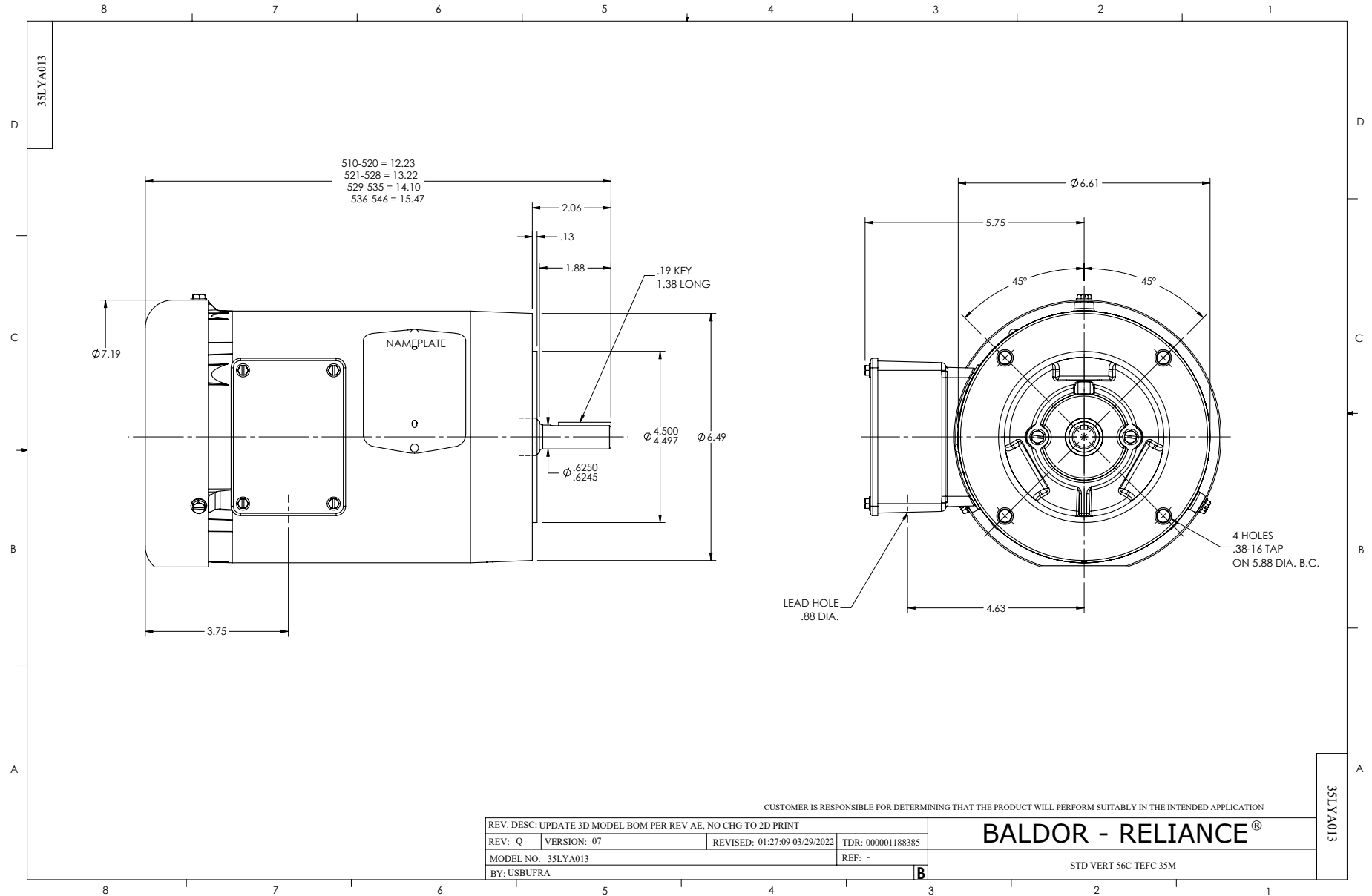
Winding: 35WGM899-R001			Type: 3529M			Enclosure: TEFC		
Nameplate Data				230 V, 60 Hz: Low Voltage Connection				
Rated Output (HP)	1.5		Full Load Torque	6.97 LB-FT				
Volts	208-230/460		Start Configuration	direct on line				
Full Load Amps	5-4.9/2.45		Breakdown Torque	23.6 LB-FT				
R.P.M.	1140		Pull-up Torque	18 LB-FT				
Hz	60 Phase	3	Locked-rotor Torque	19.1 LB-FT				
NEMA Design Code	B KVA Code	K	Starting Current	30.8 A				
Service Factor (S.F.)	1.15		No-load Current	3.12 A				
NEMA Nom. Eff.	80 Power Factor	72	Line-line Res. @ 25°C	2.75 Ω				
Rating - Duty	40C AMB-CONT		Temp. Rise @ Rated Load	84°C				
S.F. Amps			Temp. Rise @ S.F. Load	100°C				
			Locked-rotor Power Factor	50.2				
			Rotor inertia	0.172 LB-FT ²				

Load Characteristics 230 V, 60 Hz, 1.5 HP

% of Rated Load	25	50	75	100	125	150	S.F.
Power Factor	31	49	63	72	77	80	75
Efficiency	69	78.4	80.3	80.6	78.2	75.5	79.2
Speed	1187	1173	1158	1140	1121	1098	1129
Line amperes	3.26	3.62	4.18	4.9	5.84	6.96	5.46

Performance Graph at 230V, 60Hz, 1.5HP Typical performance - Not guaranteed values





CD0005

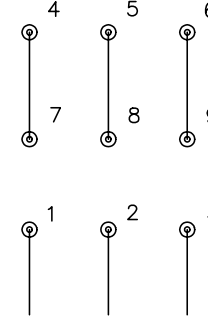


LOW VOLTAGE
(2Y)



LINE

HIGH VOLTAGE
(1Y)



LINE

NOTES:

1. INTERCHANGE ANY TWO LINE LEADS TO REVERSE ROTATION.
2. OPTIONAL THERMOSTATS ARE PROVIDED WHEN SPECIFIED.
3. ACTUAL NUMBER OF INTERNAL PARALLEL CIRCUITS MAY BE A MULTIPLE OF THOSE SHOWN ABOVE.
4. LEAD COLORS ARE OPTIONAL. LEADS MUST ALWAYS BE NUMBERED AS SHOWN.

REV. DESC: REVISE TO SHOW OPTIONAL COLORS			
REV. LTR: E	BY: JLP	REVISED: 01/19/99 10:15	TDR: 0171435
900000		FILE: AAA00005140	MDL: -
		MTL: -	

BALDOR ELECTRIC Co.

3PH, DV, 9 LEADS

CD0005